

 The Tile Shop

# The Art of Tile

2022 Look Book







## Online & Nationwide

With over 140 stores throughout the U.S. and 24/7 access to [tileshop.com](https://www.tileshop.com), we're here to support your vision from start to finish.

## Inspiring Showrooms

It's better in person. Explore new products and see firsthand how our tile brings design alive with countless in-store displays.

## Free Design Services

Take the guesswork out of tile design by consulting one of our skilled tile experts. They'll answer any questions you may have, so you can feel confident in starting your next project. Schedule a free design consultation online at [tileshop.com](https://www.tileshop.com).





## Mosaic Marvels

The beauty of mosaic tile lies at the intersection of detailed design and seamless installation. With incredible versatility in shape, color and material, mosaics can be considered the perfect addition to any kitchen or bathroom.



Left top to bottom: [Posh Light Bronze](#), [Neo Hex Gloss Oatmeal](#), [Hex Matte White with Black Flower](#), [Altrae Stone with Glass](#), [Sampson](#), [Divisa](#), [Rosewater Marble with Glass](#), [Victoria Grey Blossom with Nacre Stone and Glass](#), [White Matte Fan](#), [Picket Belmont Mix](#), [Palissandro Niles](#), [Reese](#), [Hampton Carrara Hex](#), [Verona](#), [Flora Carrara](#) and [Herringbone Gloss Denim](#) | Right top to bottom: [Hex Matte Collodi](#) | [Lombardia White 12" h x 24" in.](#), [Skyline Marquina](#), [Hampton Carrara Hixton](#), [Noir Hixton](#), [Aqua Grigio 24 x 47 in.](#) | [Sampson](#)





## The Zellige Collection

Carefully crafted by skilled artisans in Morocco, every piece in the Zellige collection embodies true organic beauty with striking variations in color and surface texture. Adhering to traditional processes of hand-molding, hand-cutting and hand-glazing, each tile showcases one-of-a-kind character. The result? A distinct appearance rich in nuance and natural allure.

Zellige Alabaster 4 in. | Gold Metal Trim | Zellige Chabone





Left: [Zellige Black 4 in.](#) | Right top to bottom: [Zellige Alabaster 4 in.](#) and Gold Metal Trim | [Zellige Chabone](#) | Zellige Collection



# A Pattern for Every Personality

Bright and bold? Soft and feminine? Individuality shines through patterns inspired by geometric shapes, old-world style and more. Numerous color, shape and size options offer endless possibilities to achieve a compelling visual element dripping with personality.

Left top to bottom: [Laura Ashley Louise Star Charcoal Hex 10 in.](#) | [Cybele Grey 8 in.](#) | [Gold Widow Hex 8 in.](#) | Right: [Morris & Co. Pure Net Linen and Black Ink 13 in.](#) and [Hampton Carrara Subway 2 x 8 in.](#)



Design and Photography by Jessica Brigham



Design by Bari J. Ackerman  
Photography by Megan Easterday  
of Easterday Creative





Left: [Artisan Cardiff 8 in.](#) | Right top to bottom:  
[Cassettone Grey Mosaic](#) | [Star Oxide 18 in.](#) |  
[Star Ceramic 18 in.](#)

Photography by Annie Selke

Share Your  
 Space with Us  
[@thetileshop](#)

Design and Photography  
 by Aniko Levai

Design and Photography  
 by 13ThirtyDesigns



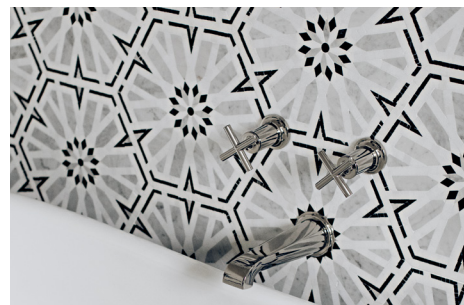




## Exquisite Precision

Designed with the utmost precision, waterjet mosaics feature a mix of materials with intricate patterns and soft curves to form an elegant work of art. With a selection of over 100 individual waterjet styles that coordinate with our natural stone collections, creating a truly breathtaking space has never been easier.

Left top to bottom: [Firenze Carrara Essex](#) 3 x 6 in., Barnes and Somerset, Gold Metal Trim and [Havana with White Nacre](#) | [Bette Victoria](#), Grenada Glass, [Africa Tempesta](#) 8 x 20 in., Barnes and Somerset | [Casablanca](#) | Right: [Black Marquina Barnes](#), [Casablanca](#), [Hampton Carrara](#) 12 in., and [Black Marquina](#) 12 in.



### FEATURED DESIGNER

Timber Trails  
Western Springs, IL

Design by Julie Howard  
Photography by  
John and Maura Stoffer







## Beyond the Everyday Subway

Easily adaptable to fit any look, subway tile is a go-to for a reason. Its wide variety of size, color and material options allows for endless design possibilities, from incorporating pronounced grout lines to creating custom patterns.

Left: [Splendours White](#) and [Cream 3 x 12 in.](#) | Right top to bottom: [Imperial Mint 3 x 6 in. Flat.](#), [Bevel and Frame](#) | [Color Mind Marine BR 3 x 10 in.](#) | [Annie Selke Artisanal Sky Dark 3 x 12 in.](#)

## Impactful Grouting

Add definition to tile design with high-contrast grout that makes a statement.

Design and Build by Jkath  
Design Build + Reinvent  
Photography by Chelsie Lopez











Design by Bria Hammel Interiors  
Build by SD Custom Homes  
Cabinetry by Regalwood  
Architecture by David Charlez Designs  
Photography by Spacecrafting Photography

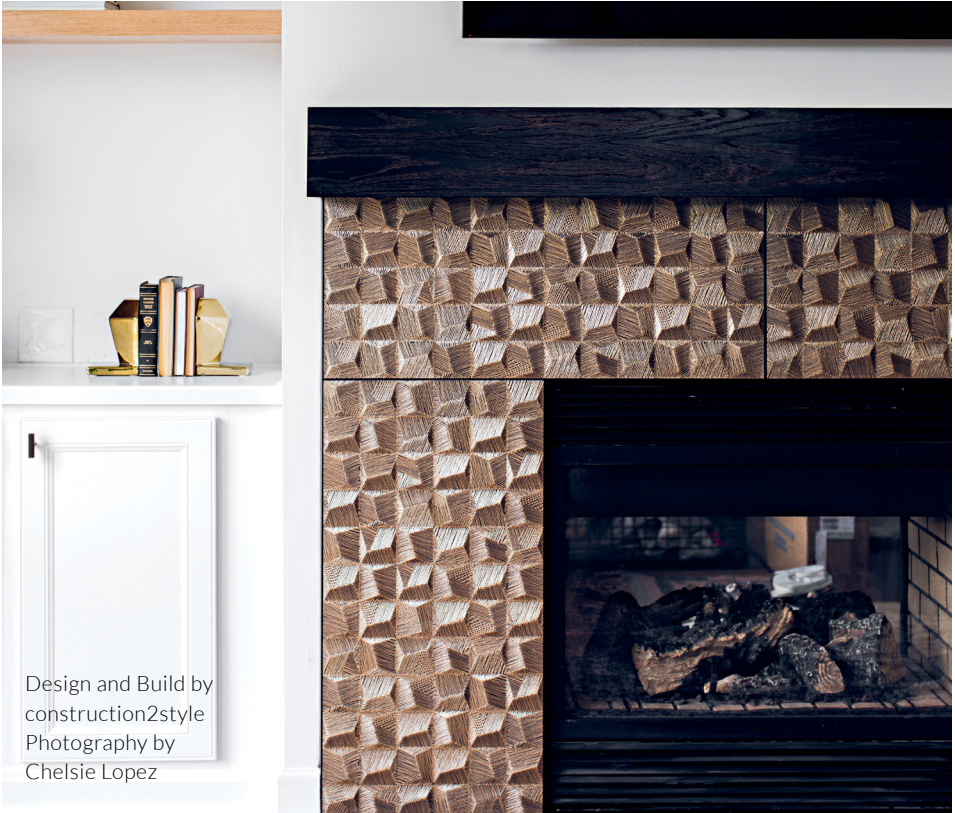
Annie Selke Artisanal Smokey Blue 3 x 12 in.





# Let Your Walls Do the Talking

Acting as an architectural element, sculptural tile features beautifully raised surfaces that awaken the senses and create captivating movement.



Design and Build by  
construction2style  
Photography by  
Chelsie Lopez

Left: [Folhas Quartzo 18 x 35 in.](#) | Right top to bottom: [Yara Metal Silver Hex 12 in.](#) | [Cube Gold 18 x 35 in.](#)





Left: [Terrazzo Bianco Macro 8 in.](#), [Track Stack White](#), [Legno Limestone 12 x 24 in.](#), [Riad Grey 4 in.](#), [Glass White](#), [Khaki](#) and [Rosewater Amalfi](#) | Right: [Glass Burlap](#) and [Khaki Amalfi](#), [Materika Grey 12 x 24 in.](#), [Firehouse Thin-Brick 2 x 8 in.](#), [Terrazzo Nero Macro 8 in.](#) and [Picket Gloss White](#)





## Timeless Beauty

Our tried-and-true natural stone collections evoke luxury and sophistication – two qualities that withstand the test of time. With one of the most robust selections of natural stone in the industry, we ensure the unique beauty of every piece is emphasized by thoughtfully selecting each finish and edge style.

Left top to bottom: Queen Beige, [Siberian Pearl](#), [Calacata Evora](#), [Firenze Carrara](#), Claros Silver, [Hampton Carrara Antique](#), Volakas, Legno, San Dona | Right top to bottom: [Arctic White](#), 12 x 24 in. | [Assorted Siberian Pearl](#)





## The Calacata Evora Collection

Quarried just beyond the historic city of Fátima, Portugal, our exclusive Calacata Evora marble collection radiates romantic elegance with its exquisite blend of warm and dramatic features. Vivid veining in rich shades of honey gold and soft grey flows across the stone's opulent white surface, bringing walls and floors to life with enchanting movement.



Assorted [Calacata Evora Collection](#) and Gold Metal Trim







## Extensive Collections

Dedicated to offering the finest natural stone assortment, we travel the world sourcing our exclusive Rush River collections of field tile, mosaics, trim and accessories to ensure spaces always feel custom and cohesive.

[Calacata Evora Collection](#)





Queen Beige

Calacata Evora

Arctic White

Siberian Pearl

Royal Satin

Bianco Puro

San Dona

Africa Tempesta

Hampton Carrara Antique

Volakas

Hampton Carrara

Firenze Carrara

Ashford Carrara

Design by Wit & Delight



## Marble

Quarried from the foothills of Greece to the mountains of Italy, our selection of pristine marble features over 20 individual collections. With eye-catching veining and a slightly translucent surface that reflects light, there's no shortage of opulence when it comes to this luxurious stone.

Right top to bottom: [Queen Beige Versailles](#) | [Assorted Firenze Carrara](#)

Share Your  
Space with Us  
[@thetileshop](#)

Design and Photography  
by Renovation Husbands







Left and Right: Arctic White 12 x 24 in.



# Travertine

Formed through mineral deposits in natural springs, travertine carries a rich historical background. Used by the Romans to build the Colosseum, this timeless stone features distinctive character with swirls of movement and stunning color variation ranging from warm brown to silvery grey.

Left top to bottom: Assorted Macchu Picchu and Dark Stainless Steel Somerset | Atlanta White 24 x 48 in., Claros Silver Hex Mosaic and Skirting | Right: Assorted Claros Silver and Hampton Carrara Arabesque



Design by Kelli Fontana Vogelgesang  
Build by Rick & Kelli Vogelgesang of West Bay Homes  
Photography by Spacecrafting Photography







Design and Build by Timber Trails Development Company  
Photography by John and Maura Stoffer

## Limestone

Originating from seashells and ancient marine life on the ocean floor, limestone is one of the oldest natural building materials. With soft patterning and beautiful hues of brown, black, grey and white, our selection of limestone provides the perfect neutral backdrop for any setting.

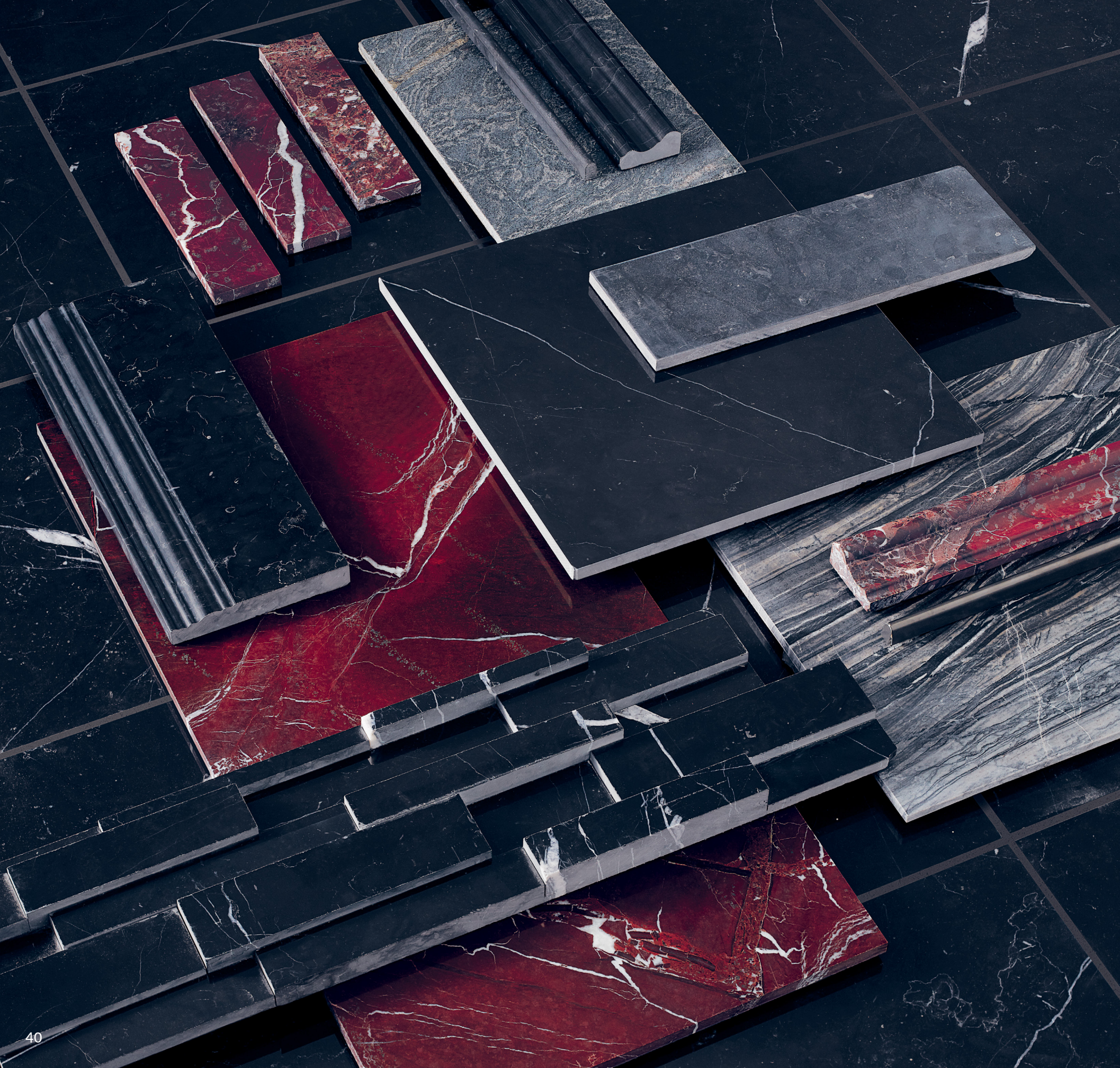


Design and Photography  
by Chris Loves Julia



Left: [Volakas](#) and [Legno](#) | Right top to bottom: [Assorted Silver Mist](#) | [Volakas](#) and [Legno](#) | [Assorted Legno](#) and [Legno Wheaton](#)





Design and Build by Timber Trails Development Company  
Photography by John and Maura Stoffer

## Dare to Go Dark

Natural doesn't have to mean neutral. Our selection of exotic natural stone evokes a sense of drama with rich coloration and high-contrast veining.

Left top to bottom: [Rosso Marquina 2 x 8 in.](#) | [Noir Somerset and Barnes](#) | [Silver Grey Polished 8 x 20 in.](#) | [Black Marquina 12 in.](#) | [Noir 4 x 12 in.](#) | [Black Marquina Skirting](#) | [Black Marquina Architectural 22 x 6 in.](#) | [Rosso Marquina 12 x 18 in.](#) | [Silver Wave 12 x 24 in.](#) | [Rosso Marquina Barnes](#) | [Dark Stainless Steel Somerset](#) | Right: [Noir Honed 3 x 6 in.](#)





Morris & Co. Pure Net  
Linen 13 in.





.....  
EXCLUSIVE  
DESIGNER  
COLLECTION

Design by Bari J. Ackerman  
Photography by Megan Easterday  
of Easterday Creative



THE ORIGINAL  
**MORRIS & Co**

FOUNDED BY WILLIAM MORRIS IN 1861

A modern take on vintage style, the Morris & Co. Pure Net collection brings an iconic 19th-century print designed by William Morris to life through a brand new medium. Derived from Morris's original wallpaper design of 1895, the collection features three distinct colorways with delicate floral and cornice-like details, along with a lightly faded appearance for an authentic feel.

Left top to bottom: Pure Net Linen and Black Ink 13 in. | Pure Net Cloud Grey 13 in., Annie Selke Artisanal Sky Pencil and Retro Lino 3 x 12 in. | Right: Pure Net Cloud Grey 13 in., Annie Selke Artisanal Sky Pencil and Retro Lino 3 x 12 in.







Design and Build by Timber Trails Development Company  
Photography by John and Maura Stoffer



.....  
EXCLUSIVE  
DESIGNER  
COLLECTION



# LAURA ASHLEY

SINCE 1953

Inspired by historic prints from the Laura Ashley archive, this collection combines a sense of history with modern British style to create effortlessly elegant tiles. Through the use of whimsical and geometric patterns in both bold and soft color palettes, the perfect balance of classic and contemporary design is achieved.

Left: [Wicker Sea Spray 13 in.](#) | Right top to bottom: [Laura Ashley Collection](#) | [Louise Star Cloud Blue Hex 10 in.](#), [Firenze Carrara Corner Shelf](#) and [Penny Round White Mosaic](#)





## annie selke™

Featuring nearly 200 unique tiles, the Annie Selke collection pushes the boundaries of technology to achieve the woven texture of rugs, the sheen of metallic fabrics and more. From subtle to striking, these tiles speak to a range of design styles while seamlessly integrating into any space. To view the entire collection, visit [tiles.shop.com/annieselke](https://tiles.shop.com/annieselke).

Left top to bottom: Goldleaf Speckle 13 x 23 in. and Gold Metal Trim | 12 Colors of Artisanal Subway 3 x 12 in. | Right: Flora Vapor Blue 18 in., Artisanal White 3 x 12 in., and Gold Metal Trim





# Designed with Durability

Our stone-look tile collections effortlessly mimic the beauty and movement of natural stone. Ceramic and porcelain offer incredible durability and ease of maintenance while achieving an authentic look and feel with striking veining, unique color variation and a variety of finishes.

Left to right: [Armoni Light Grey 48 in.](#) | [Elite Renoir 48 in.](#) | [Panarea Nero 40 in.](#) | [Pisa Gold 24 in.](#) | [Aterra Antracite 12 x 24 in.](#) | [Illusion Snow 24 x 48 in.](#) | [Calacatta Gold 12 x 24 in.](#)

NEW SIZE · NEW SIZE · NEW SIZE · NEW SIZE ·  
4 x  
4 ft.





Left: [Armoni Light Grey 48 in.](#) | Right: [Invisible Grey 24 x 48 in.](#)





## Harmonious Hues

The blending of warm and cool tones creates an atmosphere that engages the senses and excites the soul. Set any space apart by incorporating an unexpected and sophisticated combination of complementing hues.



Left top to bottom: [Imperio Azurro 12 x 24 in.](#), [Everest Grey Mosaic](#), [Pisa Gold 12 x 24 in.](#), [Illusion Sand Porcelain 24 x 48 in.](#), [Lafaenza Creama 24 in.](#), [Pisa Gold 24 in.](#), [Estallido Blue Mocha Glass Hex Mosaic](#), [Aqua Blu 3 x 12 in.](#), [Lafaenza Oro Oceano 24 in.](#), [Lafaenza Oro 24 in.](#) and [Everest Blue Mosaic](#) | Right top to bottom: [Aqua Blu 24 x 47 in.](#) and [Glass Silver Diamond](#) | [Lafaenza Oro Oceano 24 in.](#)



## Artisanal Charm

Handmade-look tile adds whimsical character to walls and floors with a one-of-a-kind feel. Featuring uneven surface texture and beautiful color variation, this style puts the *perfect* in perfectly imperfect.

Ranging from matte to iridescent, neutral to colorful and solid to patterned, our extensive assortment of handmade-look tile offers a unique softness that lends itself beautifully to both traditional and contemporary spaces.

Clockwise: Riad Grey 4 in. | Splendours White, Cream and Grey 3 x 12 in. | Mallorca White 2 x 8 in. | Chantilly Biscuit 3 x 6 in. | Bulevar White 4 x 12 in. | Riad White 4 in. | Retro Lino 3 x 12 in. | Color Market Santorini, Siberian and Patagonia 2.5 x 9 in. | Annie Selke Artisanal Cream 6 in. | Annie Selke Artisanal White and Cream 3 x 12 in.





Left top to bottom: [Annie Selke Artisanal Sage](#) and [White Hex 8 in.](#) | [Annie Selke Artisanal White Subway 3 x 12 in.](#), [Moldura](#), [Lace 6 in.](#), and [Artisanal Sage Green Pencil](#) | [Mallorca White 2 x 8 in.](#) and [Bullnose](#) | Right: [Riad White 4 in.](#) and [Look Avio 2 x 10 in.](#)



**DESIGN TIP**

Tile doesn't have to be limited to walls and floors. Transform an everyday furnishing, such as a kitchen island, into an eye-catching design element through the artistic use of tile.

Design and Photography by I Spy DIY





## Wood-Look

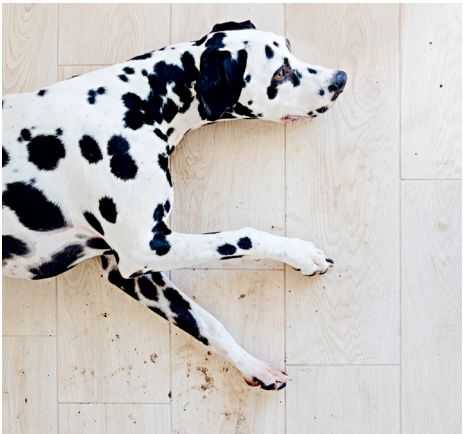
Through advanced design technology, our wood-look tiles imitate authentic woodgrain texture and knotting to achieve styles from weathered and rustic to classic and contemporary.

Left: [Viggo Nogal 24 in.](#) | Right top to bottom: [Burned Wood 8 x 48 in.](#) | [Floresta Natural 8 x 24 in.](#)

## Tile for All of Life's Messes

Wood-look tile easily withstands everyday wear-and-tear and makes cleaning a breeze.

Design and Photography by Brooke Pavel





UNIQUE STYLES · 100+ · UNIQUE STYLES · UNIQUE STYLES

Left to Right: Andira Gris 8 x 24 in. | Sandalo Taupe 9 x 26 in. | Sabik White 9 x 48 in. | Oak Tobacco 4 x 24 in. |  
Woodland Natural 9 x 47 in. | Cottage Grey 6 x 24 in. | Burned Wood 8 x 48 in. | Solna Natural MT 6 x 35 in.

Kitai Gris 8 x 24 in. | Cleveland Wengue 9 x 47 in. | Andira Gris 8 x 24 in. |  
Landes Negro 8 x 48 in. | Baltimore Taupe 6 x 24 in. | Yakarta Gris 6 x 36 in.



## Mixing Materials

Incorporating different materials into a single space has never been easier with a tile assortment curated to work in harmony. This striking West Bay Homes primary bath mixes Claros Silver travertine with Atlanta White marble-look porcelain, showcasing a look that feels effortlessly luxurious in a more achievable way.



### FEATURED DESIGNER

Kelli Fontana Vogelgesang  
Minneapolis, MN

Build by Rick & Kelli  
Vogelgesang of West Bay Homes  
Photography by  
Spacecrafting Photography

Left and right: Atlanta White 24 x 48 in., Claros Silver Hex Mosaic and Skirting



### DESIGN TIP

Instantly elevate windows with luxe tile framing to accentuate the visual appeal of any space.





Left top to bottom: Evolve Petrol Light 12 x 24 in., [Shanxi Black Durand](#), [White Matte Fan Mosaic](#), [Look Avio](#) and [Blue 2 x 10 in.](#), [Portsea Grey 8 in.](#), [Shanxi Black Bullnose](#) and [Durand](#), Wedi Brass Cover Set 4 in. and Gold Metal Trim | Right top to bottom: [Watercolor Lines Pearl Grey 6 x 20 in.](#), [Imperial Oatmeal Cornice](#) and [Pencil](#), [Annie Selke Flora Coconut Milk 18 in.](#), [Picket Florencia Smoke 3 x 12 in.](#), [Imperial Oatmeal Skirting](#) and [Penny Round White Mosaic](#)



# The Perfect Hue for You

From brilliant brick reds and burnt oranges to subdued sage greens and coastal blues, our diverse selection of colorful tile speaks to every style and taste.

53 Colors of [Glass Collection](#)





# Warm It Up

Warm-toned palettes of deep amber, honey gold and blush pink naturally saturate spaces with abundant charm. These rich hues evoke a sense of joy and comfort for an ambiance that radiates endless allure.

Left top to bottom: Imperial Blush 2 in. | Riad Sand 4 in. | Left: Imperial Bianco and Pink Hex Mosaic

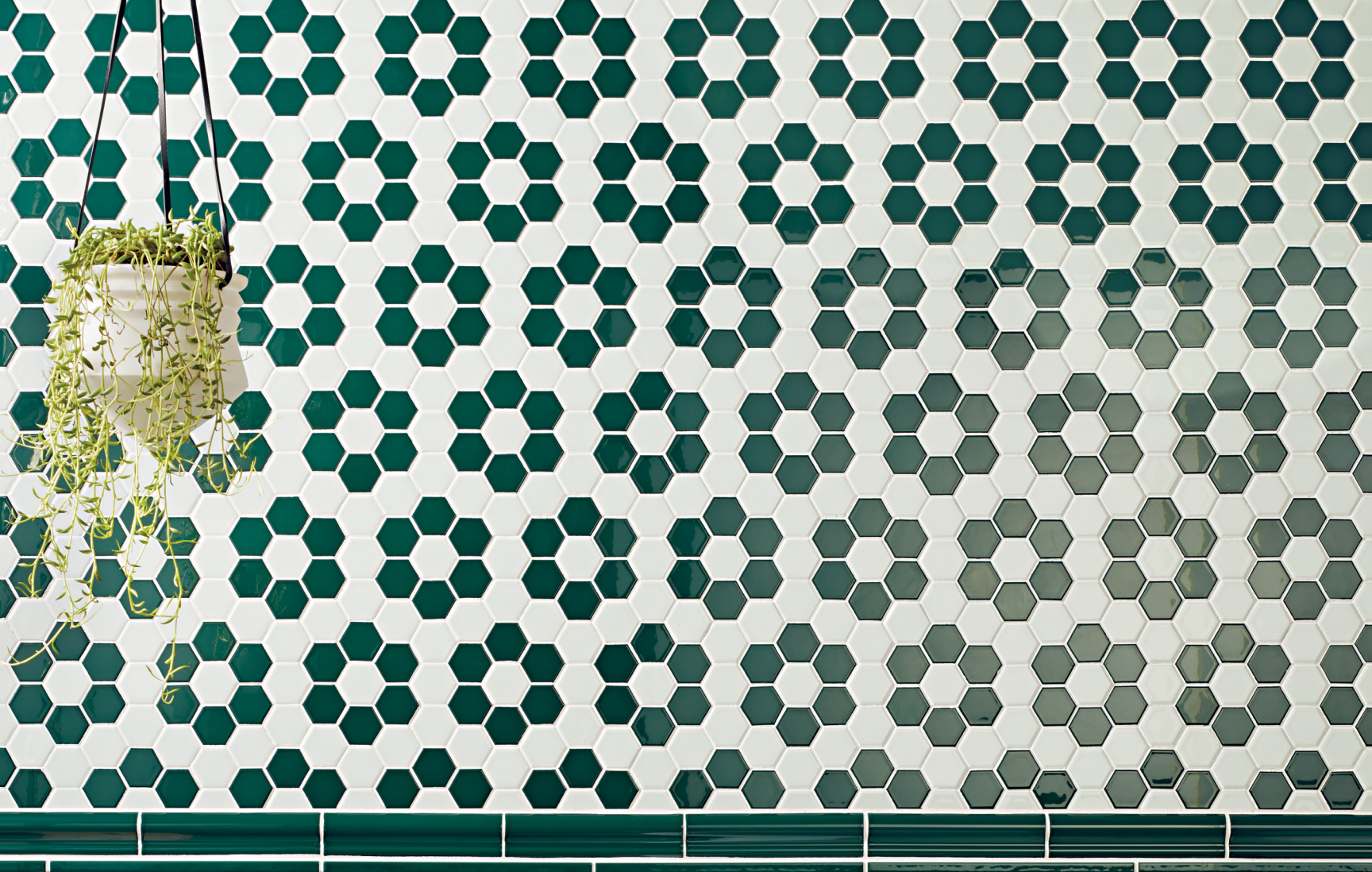


Photography by Trevor Tondro



Design by Bari J. Ackerman  
Photography by Austin LaRue Photography





#### DESIGN TIP

Our extensive Imperial collection makes creating custom tile patterns easier than ever with countless shapes, sizes and colors that are designed to work in cohesion.



## Keep It Cool

Ground any atmosphere with a calming, refreshing aura inspired by nature. Whether emulating the clear turquoise waters of the Mediterranean Sea or the lush greens found in a tropical rainforest, a cool-toned palette instantly infuses life into any design.

Left: [Imperial Kelly Green](#) and [Mint Hex Mosaic](#), [Imperial Kelly Green Pencil](#) and [London](#) and [Imperial Mint 3 x 6 in.](#) | Right top to bottom: [Imperial Sky Blue Frame 4 x 12 in.](#) | [Color Market Highland 2.5 x 9 in.](#)

Design and Build by construction2style  
Photography by Chelsie Lopez





## Pattern Play

A personalized pattern is a creative choice that will never disappoint. Every one-of-a-kind combination is an opportunity to reflect distinct character. From artisanal-inspired checkerboards to retro patchwork styles and everything in-between, there's no wrong way to create a custom pattern.

Left: [Black and White Hex 10 in.](#) and [White with Black Flower Mosaic](#) | Right top to bottom: [Imperial Black](#), [Bianco](#), [Oatmeal](#), [Spice](#) and [Sage](#) 3 x 6 in. | [Riad White](#) and [Grey 4 in.](#) | [Retro Lino 3 x 12 in.](#) and [Annie Selke Artisanal Sky Pencil](#)



Design by Joy Street Design  
Photography by Lauren Edith Andersen



Design and Photography by  
Racheal Jackson of Banyan Bridges





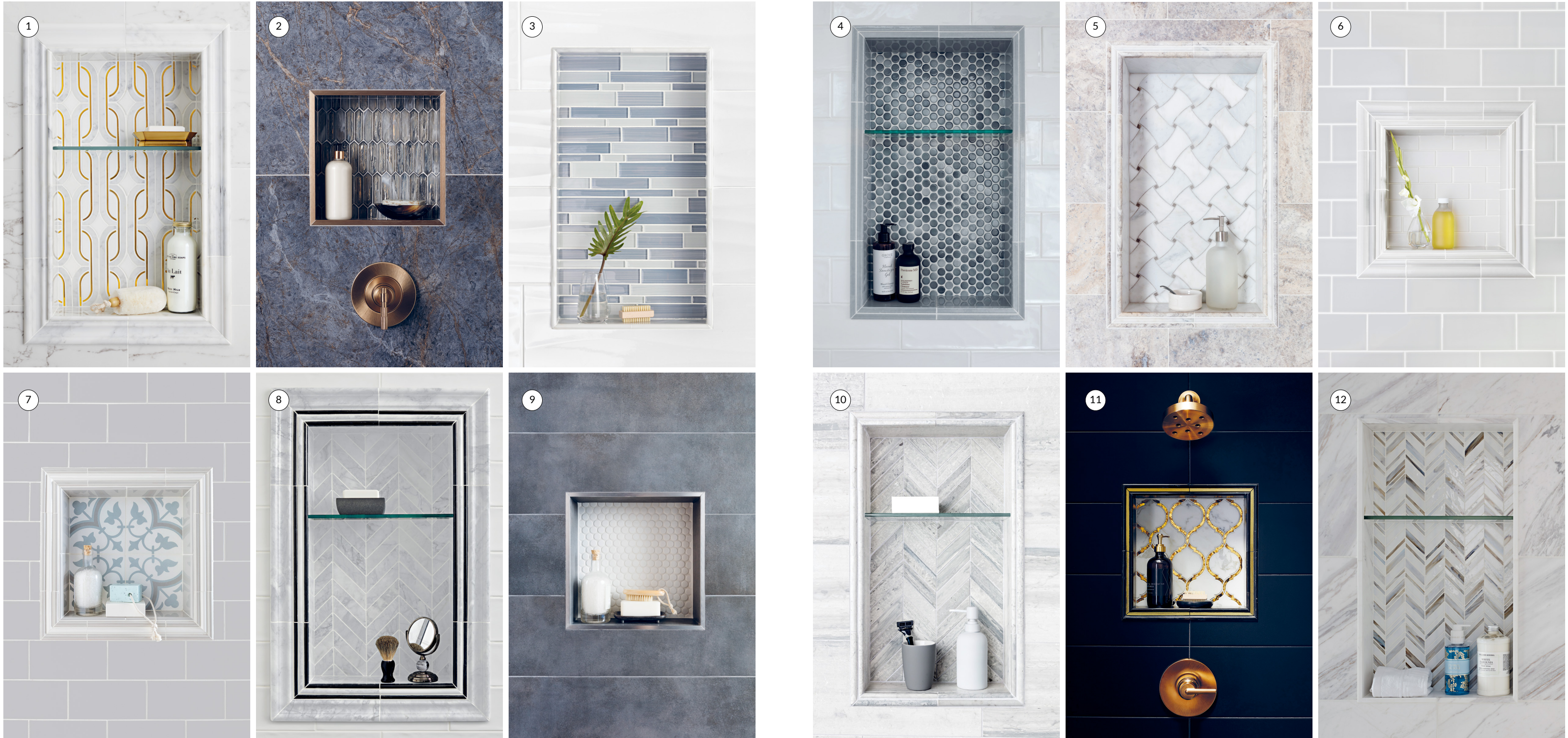


## The Finishing Touches

The key to a design that feels custom and complete? Coordinating trim and accessory pieces. From accenting focal points to creating seamless transitions between surfaces, our collections include all of the pieces needed for an elevated space.

1. [Dark Stainless Steel Somerset](#) | 2. [Ashford Carrara Somerset](#) | 3. [Silver Mist Somerset](#) | 4. [Glass Silver Cloud Pencil](#) | 5. [Imperial Gris Square Pencil](#) | 6. [Queen Beige Somerset](#) | 7. [Bianco Puro Hixton](#) | 8. [San Dona Somerset](#) | 9. [Imperial Bianco Pencil](#) | 10. [Imperial Fog Grey Pencil](#) | 11. [Italian Calacatta Gold Durand](#) | 12. [Queen Beige Bullnose](#) | 13. [Imperial Bianco Skirting](#) | 14. [Imperial Gris Skirting](#) | 15. [Legno Threshold 36 x 2 in.](#) | 16. [San Dona Curb 42 x 6 in.](#) | 17. [Legno Skirting](#) | 18. [Hampton Carrara Bullnose](#) | 19. [Annie Selke Artisanal Cream Moldura](#) | 20. [Volakas Corner](#) | 21. [Claros Silver Corner](#) | 22. [Queen Beige Barnes](#) | 23. [Annie Selke Artisanal White Pencil](#) | 24. [Siberian Pearl Bullnose](#) | 25. [Arctic White Barnes](#) | 26. [Meram Blanc Somerset](#) | 27. [Bianco Puro Capital](#) | 28. [Bianco Puro Cornice](#) | 29. [Imperial Denim London](#) | 30. [Imperial Ivory Pencil](#) | 31. [Terra Mocha Skirting](#) | See all trim and accessory pieces on our site





# Fashion Meets Function

Acting as a functional design element, shower niches can easily showcase unique styles through the use of striking mosaics and the layering of trim pieces.

1. Lombardia 12 x 24 in., Hampton Carrara Barnes and Somerset and Moderne Deco | 2. Aqua Blu 12 x 24 in., Bronze Satin Brushed L and Glass Silver Diamond | 3. Blanco Waves 8 x 24 in., Hampton Carrara Somerset and Winter Morning Athens | 4. Bulevar White 4 x 12 in., Imperial Pewter Square Pencil and Penny Round Cloudy | 5. Claros Silver 12 x 24 in., and Somerset, Hampton Carrara Somerset and Hampton Carrara Delray with Cinderella Grey | 6. Imperial Oatmeal 3 x 6 in., and Pencil and Amalfi Light Sand | 7. Imperial Denim 3 x 6 in., and Pencil, Imperial Bianco Pencil and Chevrny Blanc | 8. Bulevar White 4 x 12 in., Hampton Carrara Barnes, Noir Somerset, Hampton Carrara Somerset and Chevron | 9. Padma Anthracite, Chrome Gloss Square Edge and Penny Round White | 10. Silver Mist 12 x 24 in., Somerset, Durand and Chevron | 11. Dot Negro 8 x 24 in., Noir Somerset, Glass Gold Liner and Camilla with Gold Antique Mirror | 12. Volakas 12 x 24 in., and Hixton and Alato Beachwalk Chevron Mosaic





Zellige Alabaster 4 in. and Gold Metal Trim

### Your One-Stop Shop

When inspiration strikes, we'll be here for you. As your partner in all things tile, we strive to exceed expectations for every project by offering an extensive product assortment, complimentary design services and unparalleled customer support.

140+

Locations throughout the U.S.

20+

Inspiring displays in every showroom

24/7

Access to online shopping

\$0

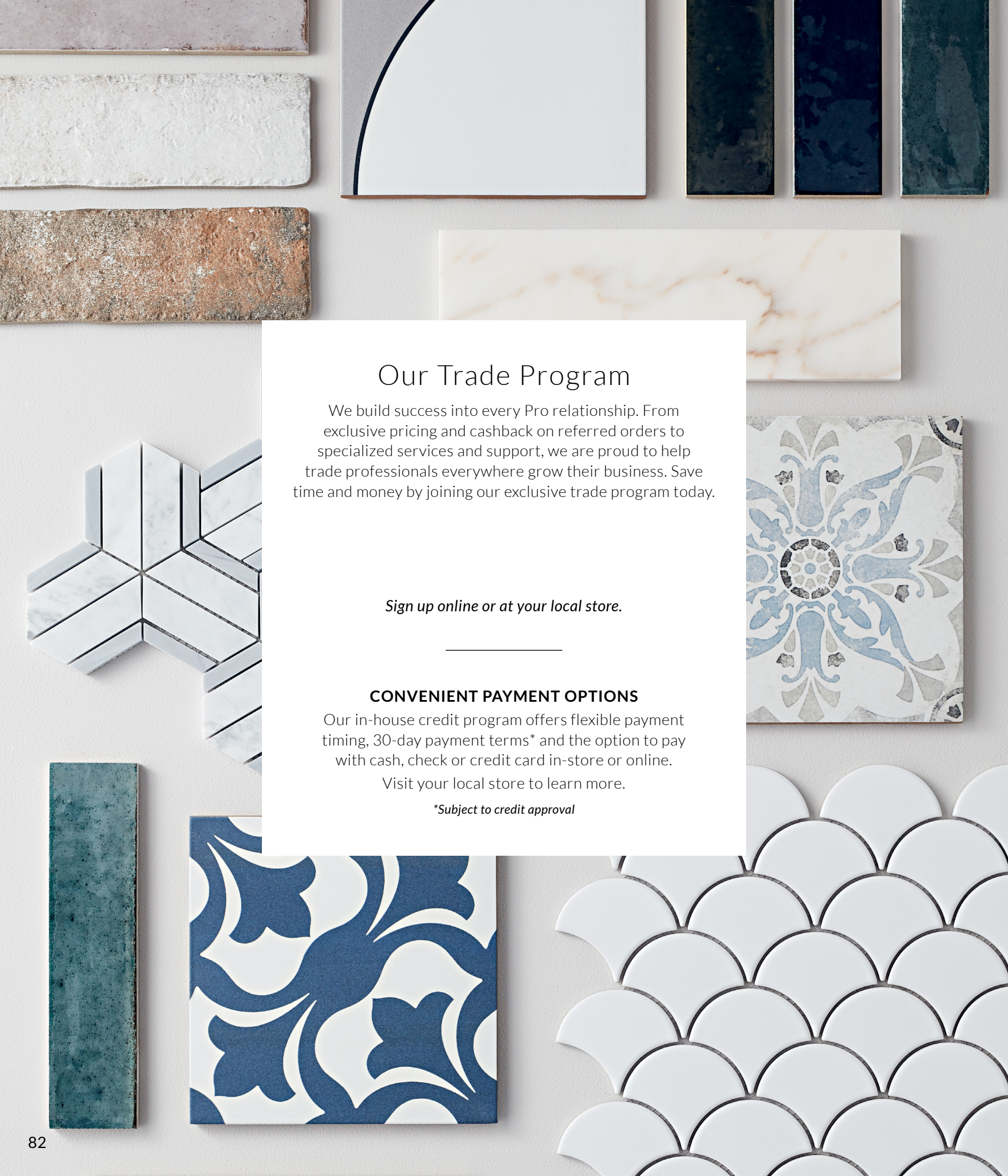
Design services

6,000+

Quality tile and stone products







# Our Trade Program

We build success into every Pro relationship. From exclusive pricing and cashback on referred orders to specialized services and support, we are proud to help trade professionals everywhere grow their business. Save time and money by joining our exclusive trade program today.

Sign up online or at your local store.

## CONVENIENT PAYMENT OPTIONS

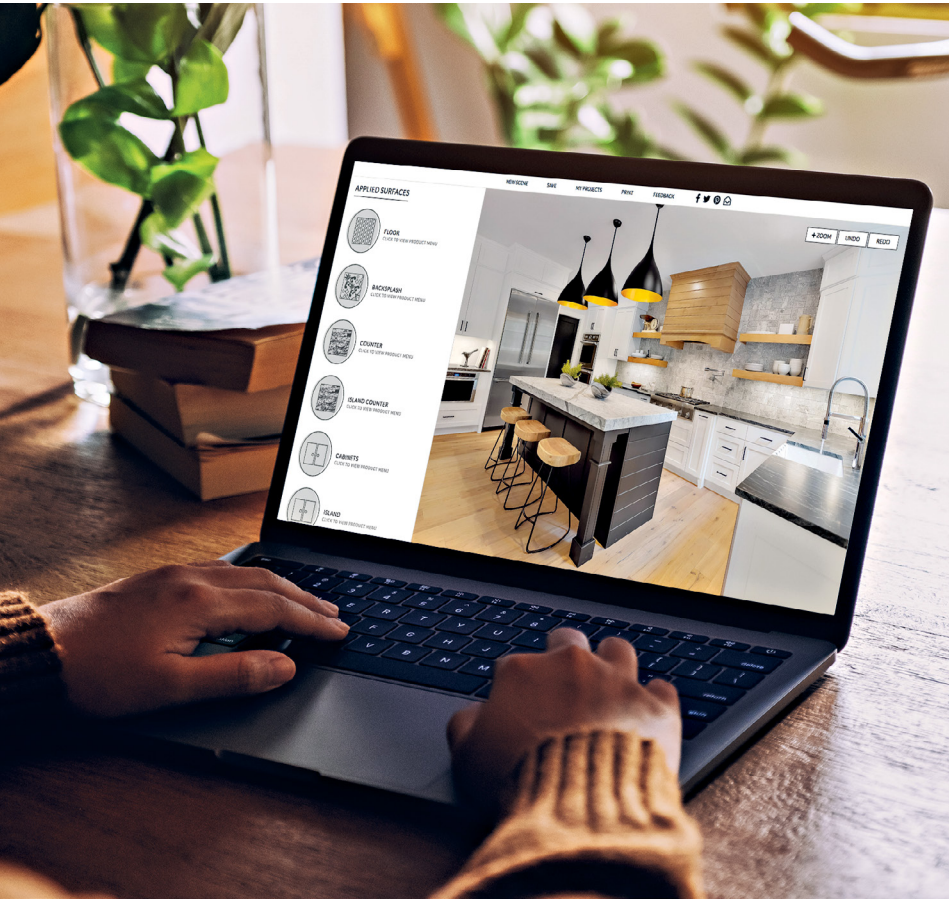
Our in-house credit program offers flexible payment timing, 30-day payment terms\* and the option to pay with cash, check or credit card in-store or online.

Visit your local store to learn more.

*\*Subject to credit approval*

# Products Pros Trust

An industry-leading lineup of professional tools and installation materials you can trust for every job.



# TILE VISUALIZER

Save time and explore a variety of unique tile combinations with the Tile Visualizer. Countless customization features allow you to find the perfect design style for any space.





 **The Tile Shop**

[@thetileshop](https://www.instagram.com/thetileshop) | [tileshop.com](https://www.tileshop.com)

Pix Collection 4 in., Glass White Pencil, Noir Somerset and Barnes