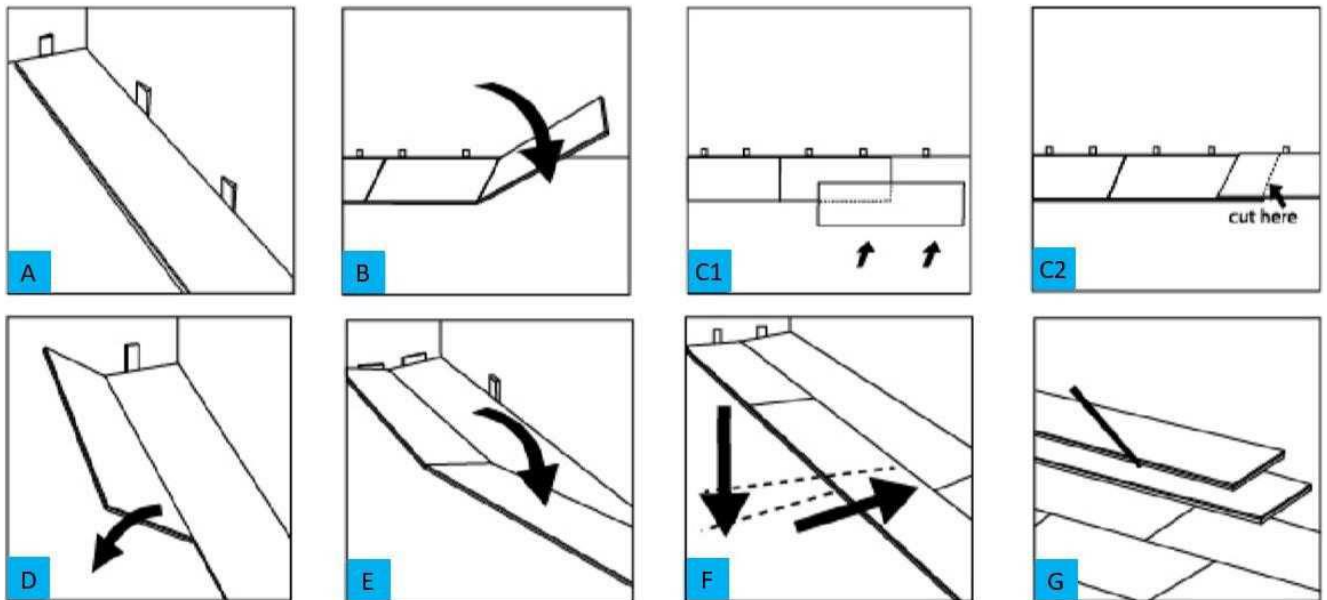


1. Read enclosed detailed installation instructions before beginning install.
2. A flat subfloor is a must!
3. Proper moisture testing is a must!
4. Proper expansion around all permanent structures is a must!
5. Molding, trim, transition, and finish pieces must not prevent the floor from floating.
6. Failure to follow installation instructions will void warranty.
7. No acclimation is required under proper conditions.

Please carefully read all instructions before you begin your installation - improper installation will void the warranty.



Each installation setting is unique, therefore it is recommended to consult a licensed installer/contractor to verify that the conditions are appropriate for this product.



**WARNING:** Drilling, sawing, sanding, or machining wood products can expose you to wood dust, a substance known to the state of California to cause cancer. Avoid inhaling wood dust or use a dust mask or other safeguards for personal protection. For more information go to [www.P65Warnings.ca.gov/wood](http://www.P65Warnings.ca.gov/wood)

Inspect the floor for defects prior to and during installation. Do not install any flooring that appears to be defective. Always check flooring planks for defects such as chips and color variations under good light conditions. Check that grooves are free of debris. **Use planks from multiple boxes** during installation to ensure random pattern variation.

**No acclimation** is required under proper conditions. However, if the flooring is exposed to temperatures less than 40° F (5° C) or more than 95° F (35° C) and/or if the flooring is exposed to relative humidity below 35% or above 70%, flooring must be conditioned by spreading them out in unopened cartons, not stacked, in the room where they will be installed, for minimum 12 hours under the recommended temperature and humidity ranges specified in this installation guide.

The area in which the flooring is installed must be climate controlled with the temperature between 65- 78°F (18-25°C) and humidity levels between 35%-70% during installation and for the lifetime after installation.

**This product is for indoor use only.**

Installation spanning greater than 40 feet in length or width must have a T-molding installed across the width of the room, archway or at the beginning of the hallway to provide proper expansion space. Doorways of less than 4 feet must always have a T-molding or other transition molding regardless of floor length or width.

While this flooring can be installed above, on, or below grade, below grade must not have a sump pump or floor drains.

This product is a floating floor and should NOT be secured to the floor. Do not install fixed objects, such as cabinets, on top of the flooring unless it is fully adhered and do not fasten trim/molding/transition pieces directly to the floor.

Required Tools and Supplies:

- Saw
- Safety Glasses
- ½" spacers
- Utility Knife
- Straight Edge Ruler or T-Square
- Pencil
- Tape Measure
- Adhesive Tape
- Rubber Mallet
- Dust Mask or Respirator

*If existing baseboard molding is difficult to remove, Quarter Round molding likely will be required to cover the expansion space need between flooring and baseboard.*

**SUITABLE TYPES OF FLOORS AND FLOOR PREPARATION**

The sub floor must be **flat, dry, and clean**. Carpet staples or any/all adhesive residue must be removed and floor must be clean to ensure proper installation. All wooden subfloors must be structurally sound and must be installed following the American Plywood Association's (APA) and the manufacturer's recommendations.

**Moisture test is required on all concrete subfloors.** Maximum acceptable moisture reading for wood subfloors is 12%. When using a calcium chloride moisture test for concrete subfloors (ASTM 1869), values must be less than or equal to 5 lbs/1000ft<sup>2</sup>/24-hr or <80% with an in situ probe (ASTM F2170). If your moisture readings exceed those listed above we do not recommend installing this product.

To check for flatness, hammer a nail into the center of the floor. Tie a string to the nail and push the knot against the floor. Pull the string tight to the farthest of the room and examine the floor for any high/lows relative to the string. Subfloors must be flat to 3/16" per 10' (5mm per 3 meters). Any areas in excess of the flatness specification must be sanded down or filled with an appropriate leveler.

This product can be installed over most existing floors including wood, non-cushioned vinyl or linoleum, and ceramic/porcelain tile if the existing flooring is intact and properly secured to the subfloor. If installing over ceramic/porcelain tile, grout lines in excess of 1/16" (0.625) must be filled with a Portland based skim coat/floor leveler according to the manufacturer's guidelines. Cover the ground surface with a minimum 6 mil (0.15mm) plastic poly sheeting moisture barrier.

**Warning: This product should not be installed over carpet. Installation over carpet will void the warranty.** When installed in rooms with direct sunlight, during the peak hours of sunlight, the use of blinds/shades or drapes to avoid prolonged direct sunlight period is recommended.

Excess moisture exposure can damage the flooring and breed mold/mildew growth on subfloor and walls. This is not considered a defect in the flooring.

If considering **Radiant heat**, flooring can be installed over 1/2" (12mm) embedded radiant heat. Radiant heat systems must have a minimum of 1/2" (12mm) separation from the product. Maximum operating temperature should never exceed 85°F (30°C). Use of an in-floor temperature sensor is recommended to avoid overheating. Before installing over new radiant heat systems, operate the system at maximum capacity to force any residual moisture. The maximum moisture content should be 2.5% (CM method). Before starting the installation, turn the heat off for 24 hours before, during, and 24 hours after installation. During installation, make sure the temperature in the room of installation is between 60-80°F (15-25°C). After installation, the system can be turned on and the temperature can be raised gradually (5°F per hour) until returning to normal operating conditions.

**Warning:** Electric heating mats that are not embedded into the subfloor are not recommended for use underneath the flooring. **Using electric heating mats that are not embedded and applied directly underneath the flooring will void the warranty.**

### Installation

- Starting in the left hand corner, place the first plank 1/2" (10mm) from the wall. Use spacers along all walls to maintain an expansion gap of 1/2" (10mm) between the walls and the flooring (Figure A).
- Attach the ends of the 1st plank and the second plank by lifting the 2nd plank and inserting the tongue on the short side into the groove of the first plank and lowering it into place. Line up edges and corners carefully (Figure B).
- Continue along the wall until you reach the last full plank, connecting each plank in manner described above. To fit the last plank, turn plank over (face down). Place the plank in the corner so the tongue on the short end touches the 1/2" spacer from the adjacent wall. Measure overlap between the installed plank and the last plank (Figure C1 & C2).
- Use saw to cut plank to size. If cutting with a jig saw, the decorative surface should be turned down. If cutting with a hand saw, the decorative surface should be face up.

**Note: The end pieces must be at least 12". This may require cutting a plank to start a row depending on the size of the room.**

- Begin the next row with the cut piece from the previous row, creating the necessary stagger. This piece should be a minimum of 12" (30cm) long and the joint offset from the previous row should be at least 12" (30cm) apart. To attach, tilt the plank you are installing slightly upwards (about 15-25°), insert its tongue into the previous row's groove, and lower it into place. The plank will click into place with light pressure (Figure D).
- Install the second plank in the second row by inserting the short end tongue into the previously installed plank's groove. Align the plank so that the long side tongue tip is positioned just over the groove lip of the plank in the first row (Figure E). Working from the end seam, at a low angle, insert the long tongue into the groove of the adjoining plank. Very little force is required to fit the tongue into the groove. You should be able to feel the tongue lock into the groove (Figure F). Continue locking each piece into place, short side first and then long side.
- To fit the last row, lay a plank on top of the previous row. With the plank against the wall, mark a line down the length of the plank and cut the planks accordingly to obtain the required width (Figure G). Insert this cut board against the wall. The last row should be at least 2" (50mm) wide. The spacers can then be removed.
- Door Frames and heating vents also require expansion room. Cut the planks to the correct length. Place the cut plank next to its actual position, use a ruler to measure the areas to be cut out and mark them. Cut out the marked points allowing the correct expansion distance on each side. T-molding is suggested in all doorways.
- To trim doorframes, turn a panel upside down to use as a height guide. Using a handsaw, cut door frames to the necessary height so that the planks slide easily under them.
- To make holes for pipes, measure the diameter of the pipe and drill a hole that is 7/8" (20mm) larger into the plank. Saw the plank into two pieces perpendicular to the length and bisecting the previously drilled hole. Then lay the pieces in place around the pipe.
- To finish the perimeter of the room, install quarter round molding using finishing nails. Nail quarter round directly into the baseboard not the flooring.
- Do not install over multiple layers of underlayment.

## Maintenance, Tips, and Warnings

### MAINTENANCE:

- Dust-mop, broom, or vacuum on the correct hard surface setting for daily maintenance. When necessary, clean with a MOIST cloth or mop and water only making sure the mop or cloth is thoroughly wrung out. DO NOT pour water or any liquid directly on the floor or use an excessively wet mop that will puddle or leave excessive moisture on the planks. Dry immediately.
- **NEVER** use detergents, soaps, or chemicals to clean the floor. Instead, use a neutral PH cleaner.
- **NEVER** use floor polish or floor cleaning wax, oils, soaps, etc. These products can damage and/or leave a film on the flooring. This is not a flooring defect.
- **NEVER** use rotating beater bars, scrubbers, jet mops, buffers, etc. Liquids and spills must be wiped dry immediately.
- Do not use steam mops.

### TIPS:

- Always use felt tip protectors on all furniture legs/feet, and regularly clean any gathered dirt/grit from the pads
- Entryway/walk off mats are recommended. **Warning: Never use vinyl/latex/rubber backed protective mats**
- Area rugs are recommended
- Replace plastic or metal casters on chairs with rubber wheels and lift instead of sliding heavy objects
- Never slide furniture across a floor without pads
- If there is small damage to the floor (less than ¼ inch) Finishing Putty can be used to repair

### WARRANTY:

**10mm 20mil equivalent** = Lifetime limited residential, 15 year light limited commercial, 10 year limited commercial

MSI warrants to the original purchaser that its Everlife Hybrid Rigid Core is free of manufacturing defects from the date of purchase for the length of time specified for that product. A defect is defined as shortfall in the product to perform its specifications. The warranty also states that for the length of the warranty the surface will not wear through under normal use. This flooring is to be used in indoor, dry, climate-controlled areas only. The warranty applies to the original purchaser only and is non-transferable.

### Petproof Warranty

This product warrants to the original residential purchaser and individual homeowner, that the floor will resist staining caused by pets, as long as the homeowner adheres to the required protocols outlined in the Care & Maintenance guide. Accidents need to be cleaned up immediately upon discovery and should not be allowed to be in contact with the flooring for more than 12 hours. Prolonged exposure to the accidents will result in progressively greater difficulty in their removal. Damages beyond staining of the floor covering product, including damages from chemicals, cleaning agents, abrasives, and tools, are not covered.

This warranty is the sole warranty extended for this product. **The warranty does not cover:**

- **Improper installation:** Noncompliance with installation guidelines as set forth by MSI. This includes issues relating to installing the wrong product, unsuitable sub-floor, improper conditioning of jobsite and flooring material, technique, improper adhesives, exposure to extreme temperatures and sunlight during installation, improper spacing, planks that have not been fully engaged during locking resulting in gaps, etc.
- **Improper use or abuse:** Includes issues from mishandling the product, physical or chemical abuse, improper care and maintenance, high heels, pet nails, installing residential product in a commercial environment, etc.
- Events beyond everyday household spills including but not limited to, leaks from appliances and plumbing, flooding, excessively wet maintenance, standing water (water that remains on the floor).
- Fading or discoloration or other damage due to excessive temperatures or sunlight.
- Flooring installed on stairs.
- Damage caused by water or moisture in the subfloor or underneath the flooring.
- Flooring that is not maintained in accordance with MSI Care and Maintenance guidelines.

MSI disclaims any and all other warranties, express or implied, including but not limited to, warranties of merchantability or fitness for a particular purpose.

Everlife is a manufactured product, and is subject to variations due to an inherent variability in raw materials and production processes. Certain tiles may have higher levels of variations. All material should be inspected prior to installation. Visual defects or nonconformities apparent prior to installation will void this warranty. All warranty claims must be reported immediately. Failure to report the warranty claim within 14 days of defect discovery will void this warranty.

MSI's liability under any theory of liability (whether contract, tort, strict liability or otherwise) shall be limited to the sole and exclusive remedy of replacement of defective goods FOB MSI facility or, at MSI's option, refund of the purchase price of such defective goods. If product is unavailable or discontinued, MSI reserves the right to select and supply similar material. The warranty does not cover all other costs, incidental and consequential damage including loss of use of the property.

Buyer acknowledges and agrees that the foregoing conditions and limitations are an essential basis for Buyer's agreement with MSI. Any suit or other legal action that the Buyer may bring against MSI arising out of the sale of this tile must be filed within 14 days from the date of MSI's alleged breach. Buyer's failure to file within this stipulated period shall be deemed to act as a waiver and time bar for any and all claims against MS International Inc.

This warranty gives you specific right and you may also have other right, which vary from state to state. For additional information about this product collection, please refer to [www.msisurfaces.com](http://www.msisurfaces.com) or contact the dealer.

All inquiries concerning the above may be sent to:  
MSI  
2095 N Batavia St,  
Orange, CA 92865