

TROWEL

Thinset spreaders designed for use on any surface and in hard-to-reach areas, available with straight edges, square, or saw teeth for different textures.

Key Features

- Available in a variety of notch shapes and sizes
- Stainless steel trowel designed for superior durability and unmatched ease-of-use
- Wider handle-to-spine clearance that caters to a variety of hand positions

Product Selection

Types:

Margin Trowel

2" x 8"



Notch Margin Trowel

1/4"



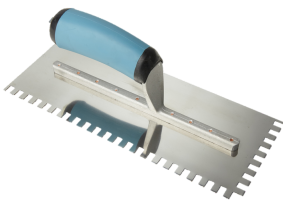
V-Notch

3/16" and 1/2"



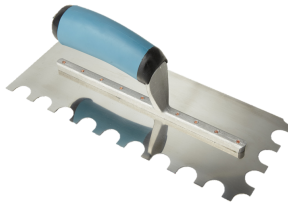
Square

1/4" and 3/8"



U-Notch

1/2"



Trowel Recommendation

Application: Mesh Mosaics

3/16" V-Notch

4 in. - 11 in.

1/4" Square/U-Notch

12 in. - 15 in.

3/8" Square/U-Notch

16 in. or Larger

1/2" Square/U-Notch

Tile thicker than 3/8"

1/2" Square/U-Notch

Ungauged Tile

1/2" Square/U-Notch

Underlayment

1/4" Square/U-Notch

