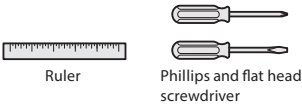




1100 SERIES INTERCONNECT SMART LOCK

Installation and User Guide

Required tools



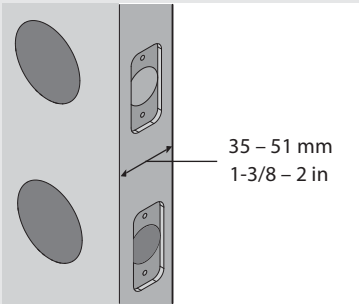
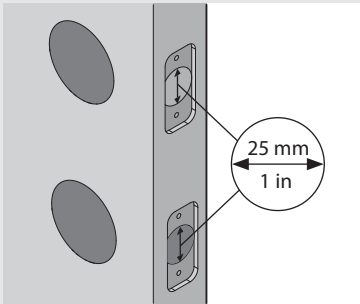
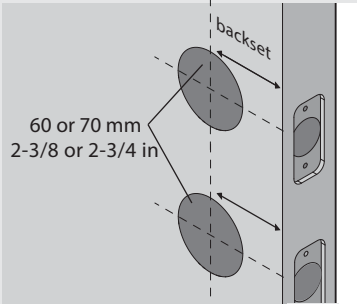
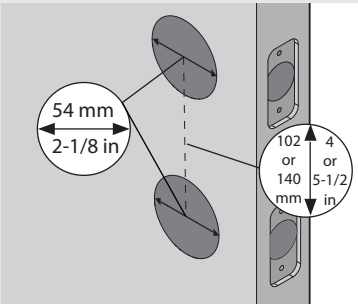
Weiser
Technical Support
1-800-501-9471
www.weiserlock.com

Parts in the box			
Latch Bolt	Interior Assembly		Exterior Assembly
Plain Latch			Traditional Contemporary
Shield	For Latch / Strike	52469	For Lock
Reinforcement Plate	Deadbolt Strike	03809	52300
	Plain Latch Strike	53082	52301
			Batteries

1 Prepare the door and check dimensions

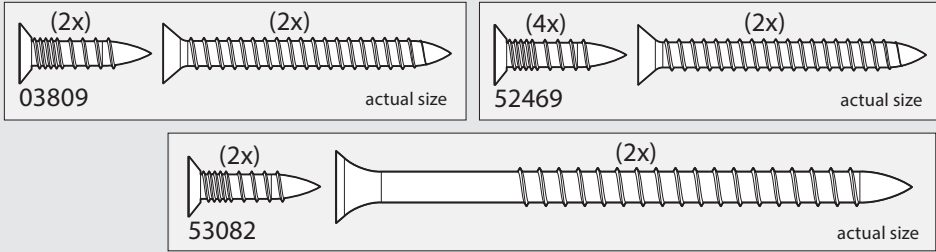
If drilling a new door, use the supplied template and the complete door drilling instructions available at www.wesierlock.com/doorprep.

- A** Measure to confirm the holes in the door are 54 mm (2-1/8 in) and they measure center to center 102 or 140 mm (4 in or 5-1/2 in).
- B** Measure to confirm that the backsets are either 60 or 70 mm (2-3/8 or 2-3/4 in).
- C** Measure to confirm that the holes in the door edge are 25 mm (1 in).
- D** Measure to confirm that the door is between 35 mm and 51 mm (1-3/8 and 2 in) thick.



2 Install the latches and strikes

For Latch / Strike Bag



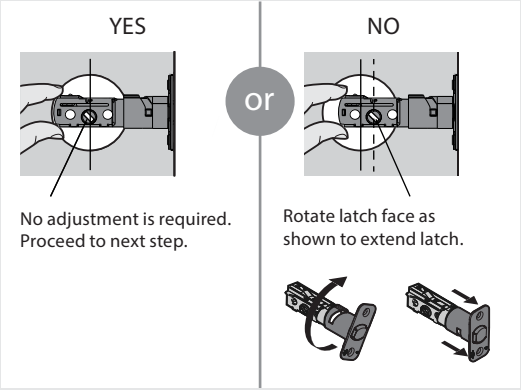
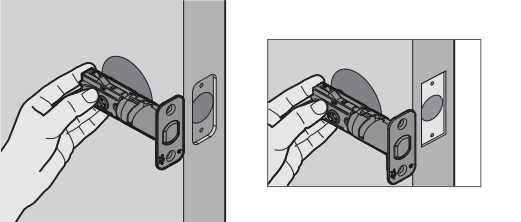
- A** Hold the latch in front of the door hole, with the latch face flush against the door edge.
- B** Is the rectangular shaped hole centered in the door hole?

YES

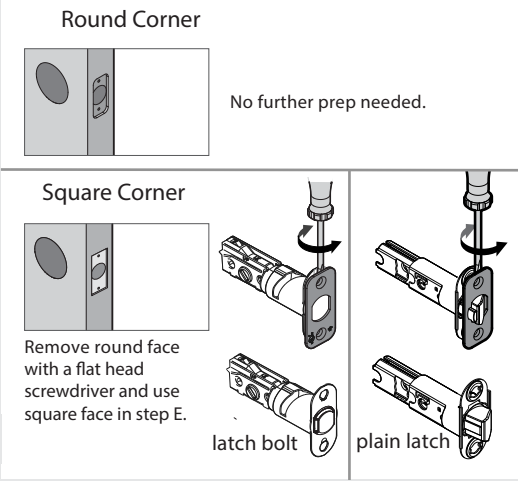
No adjustment is required. Proceed to next step.

NO

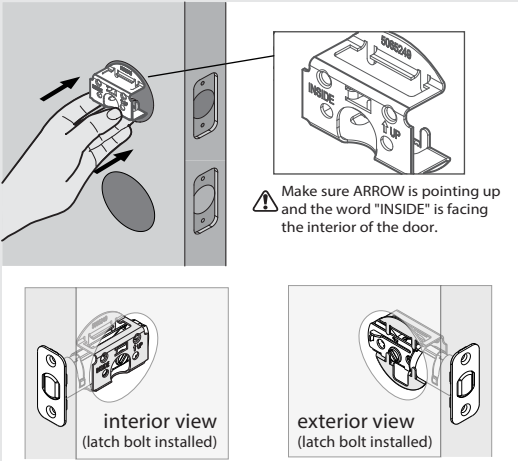
Rotate latch face as shown to extend latch.



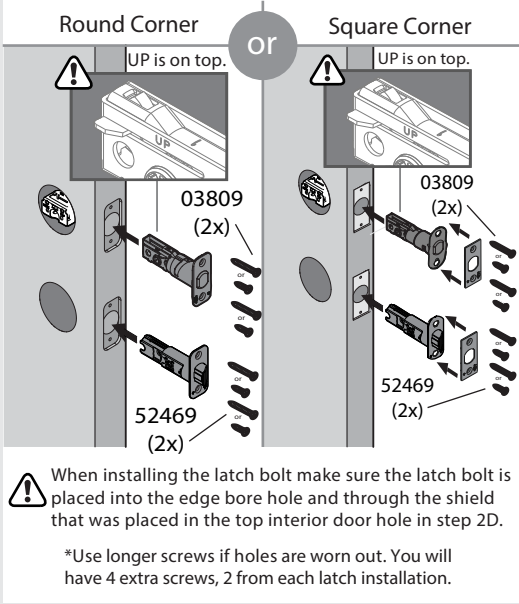
- C** Is the door edge chiseled with round or square corners?



- D** Insert shield in the top interior door hole.

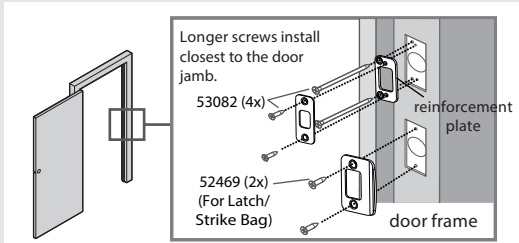


- E** Which latch face are you installing?



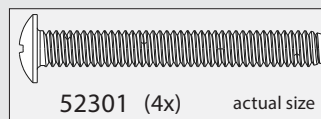
- F** Install strike on the door frame.

⚠ Make sure the hole in the door frame is drilled a minimum of 25 mm (1 in) deep.



3

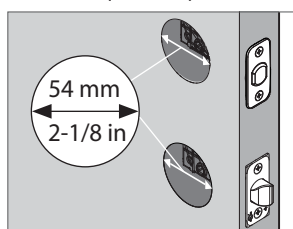
Install the exterior assembly

For Lock
Bag

A

Make sure adapter ring is on exterior assembly.

Diameter is 54 mm
(2-1/8 in)



Adapter ring is required
for installation.

B

Locate screws for step 3C(f) and keep them within reach.

52301
(4x)
(For Lock Bag)



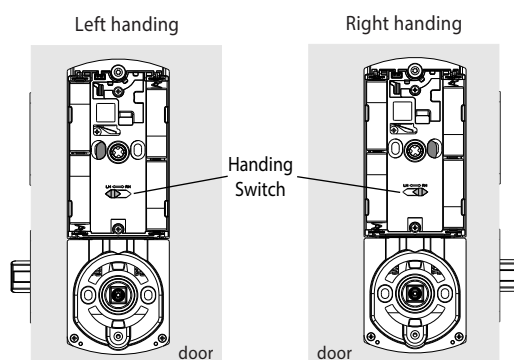
C

Install exterior assembly and interior chassis.

a

Remove interior cover on interior chassis. Use the handing switch to change handing from left to right as needed.

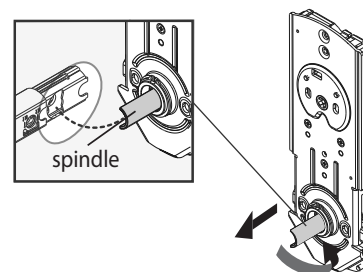
⚠ Before installing interior chassis, check for accurate handing. To determine door handing, make sure the handing switch is on the same side as the latches.



b

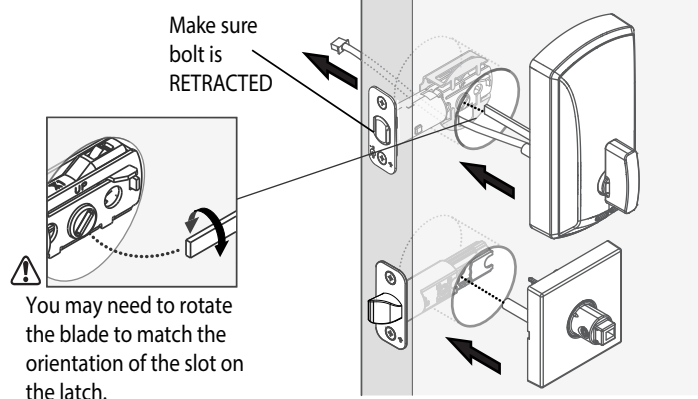
Flip interior chassis over. To change the handing of the spindle, pull out and then rotate.

⚠ Ensure the curve on the spindle matches the curve on the plain latch as shown below.



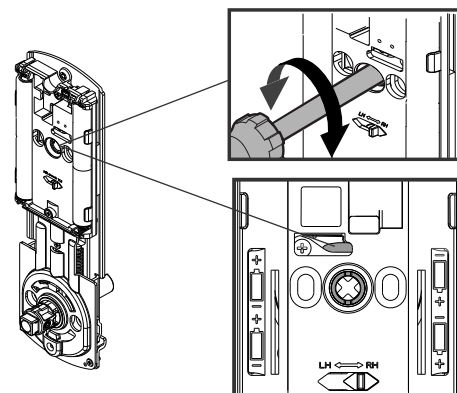
c

Install exterior assembly. Route cable underneath the latch bolt and through the shield.



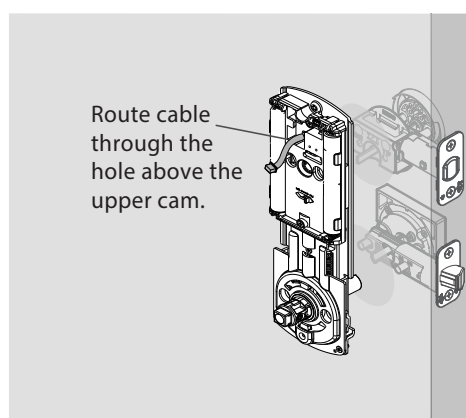
d

Before installing interior chassis, you will need to use a screwdriver to rotate the upper cam vertically as shown below to make mounting screw holes visible.



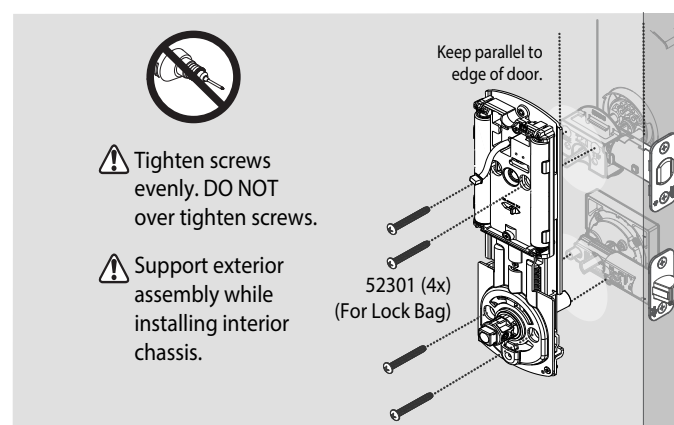
e

Install interior chassis



f

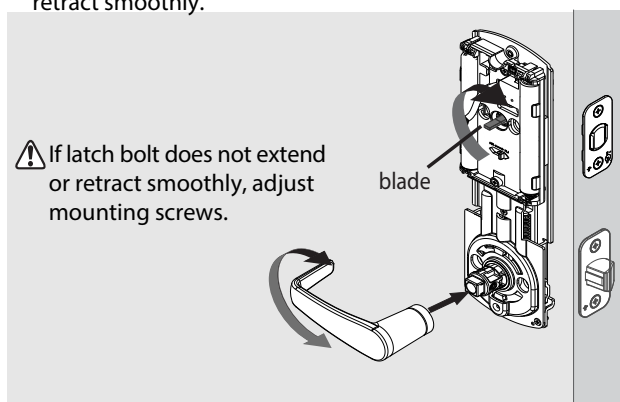
Make sure the flat blade is centered in the upper cam, and the spindle is engaged with the latch.



g

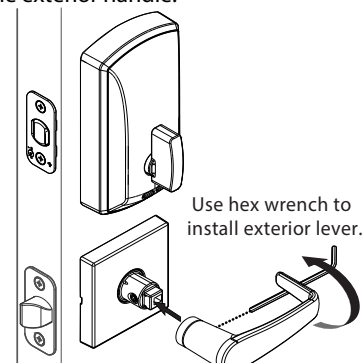
Use the blade to extend the bolt, then place the interior lever on chassis and rotate lever and both bolts should retract smoothly.

⚠ If latch bolt does not extend or retract smoothly, adjust mounting screws.



h

Install the exterior handle.



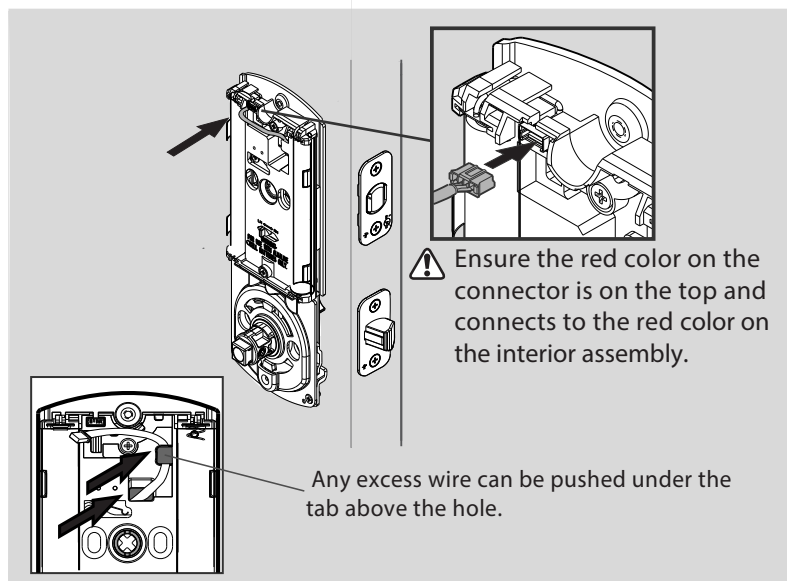
⚠ Rotate lever to test if the plain latch extends and retracts smoothly. If not adjust mounting screws.

A

Install interior cover onto interior chassis.

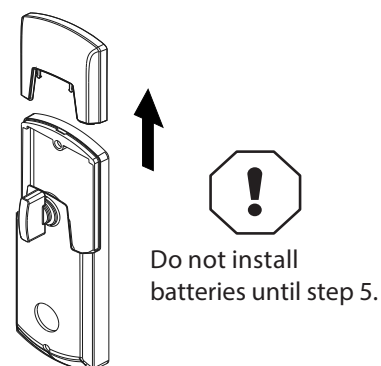
a

Connect cable wire as shown. Ensure a tight cable connection.



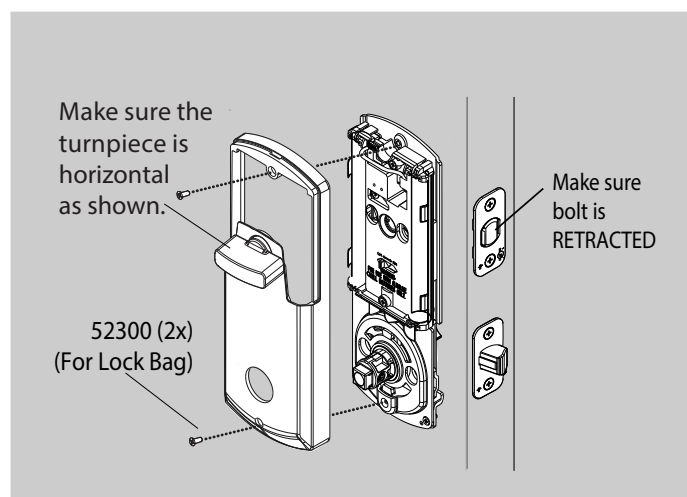
b

Remove the battery cover from the interior cover.



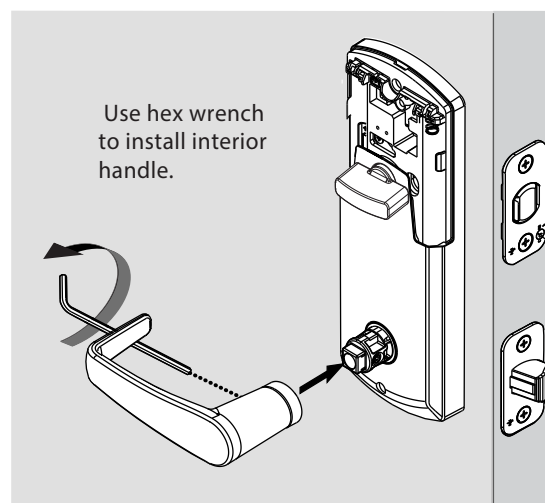
c

Install the interior cover.



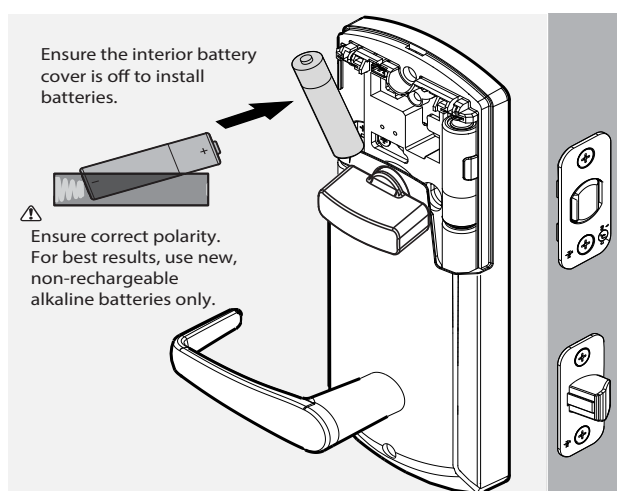
d

Install the interior handle.



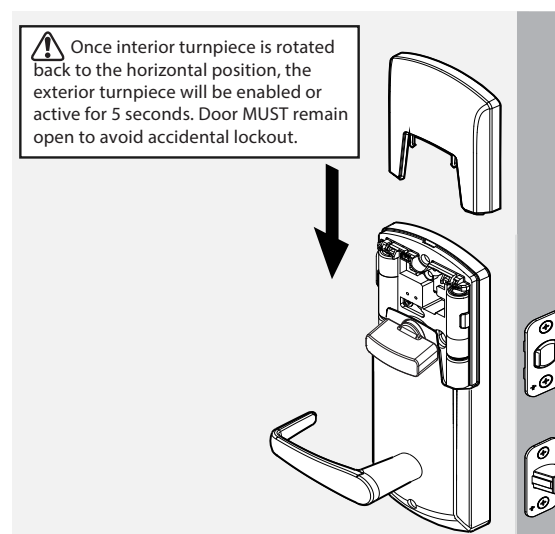
A

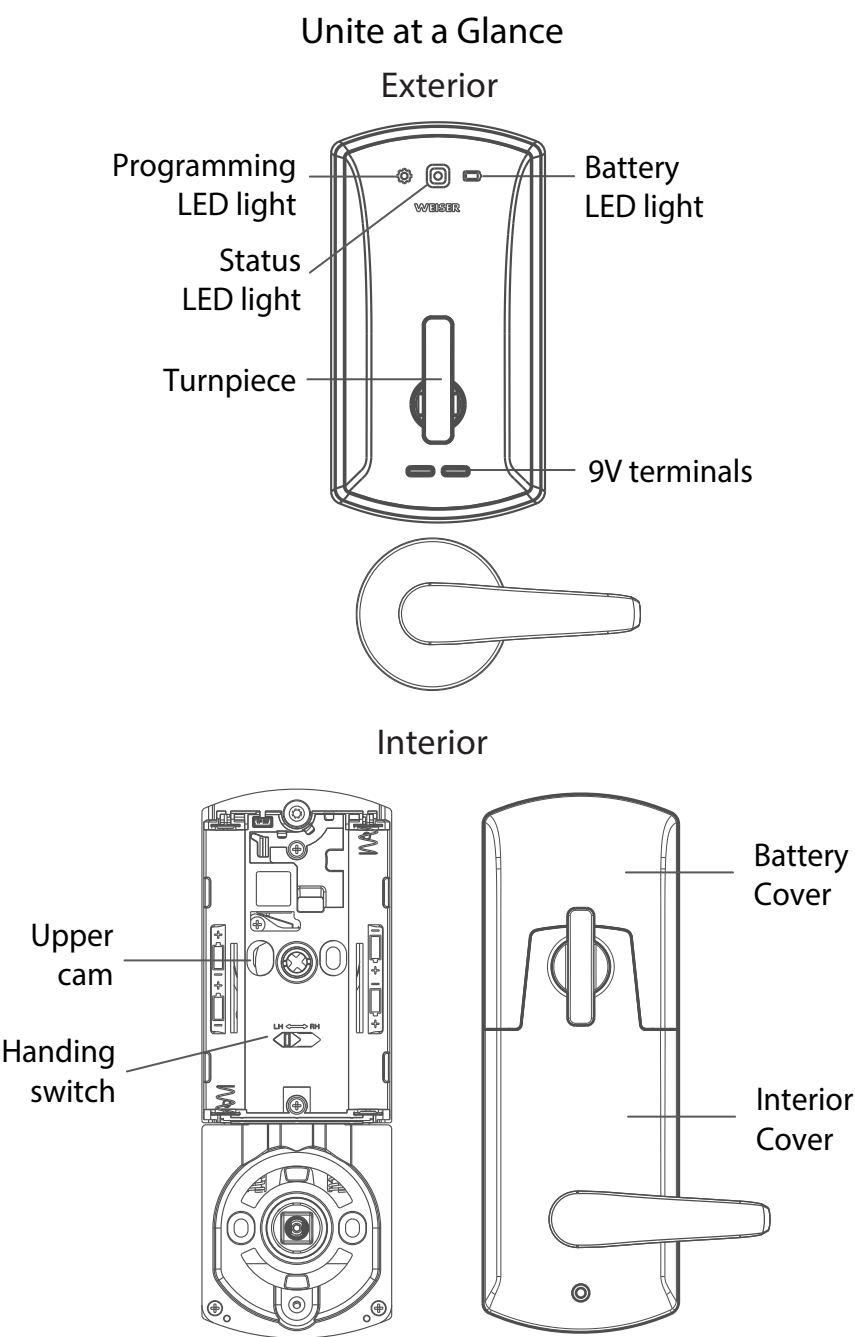
Install 4 AA batteries in interior assembly



B

Install battery cover to the interior cover.





System Alerts

Operation	Lights	Beep
Access Granted	Status flashes GREEN 3x	1 Beep
Access Denied	Flashes RED 3x	3 Beeps
Low battery life	Battery LED flashes red 3x after Access Granted	1 Long Beep then 3 Short Beeps
Power on - Full Battery Life	Solid GREEN 3s	1 Long Beep
Power on - Moderate Battery Life	Status Solid GREEN and battery LED YELLOW/GREEN	1 Long Beep
Power on - Low Battery Life	Status Solid GREEN and battery LED light RED 3s, then battery LED flashes RED 3x	1 Long Beep then 3 Short Beeps
Access Window Expired	Status Solid RED for 1.5s	No Beep

Programming your Lock

Operation	Lights	Beep	Action
Enrollment	Flashes BLUE	No Beep	BLE pairing start
	Solid GREEN 3s	1 Long Beep	Pairing complete
	Flashes RED 3x	3 Beeps	BLE pairing/ fail or timeout
Firmware Upgrade	Flashes BLUE	No Beep	Update start
	Solid GREEN 3s	1 Long Beep	Update complete
	Flashes RED 3x	3 Beeps	Update pairing/ fail or timeout

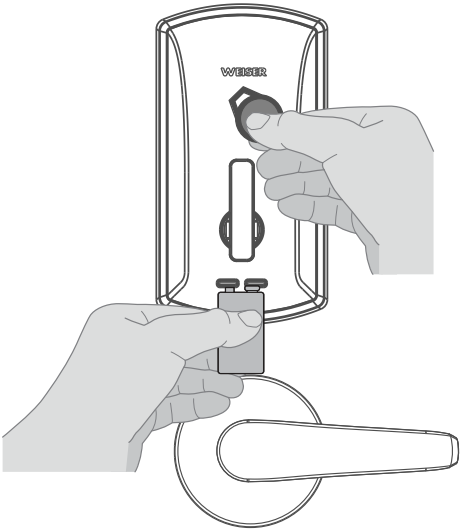
Manual Factory reset

1. Insert battery to power up the lock.
2. Status LED light displays GREEN 3s. Rotate the interior turnpiece back and forth to extend and retract bolt 3x within 5s.
3. Wait for programing LED light to alternate BLUE and RED continuously.
4. Within 10s, rotate the interior turnpiece back and forth 3x.
5. Program LED light will display solid GREEN for a successful manual factory reset.
6. Fail/ Time out all LED lights will remain off.

Low Battery

If the 4 AA batteries are too low to operate the lock, use a 9-Volt alkaline battery to temporarily power the lock. Make sure both terminals on the 9-Volt battery touch the terminals below the turnpiece. Hold the 9-Volt in place while holding the credential on the exterior of the lock. Hold the 9-Volt battery as well as the credential until the lock illuminates and unlocks.

WARNING: Change batteries immediately otherwise the lock will remain unlocked.



Important Safeguards

1. Read all instructions in their entirety.
2. Familiarize yourself with all warning and caution statements.
3. Remind all family members of safety precautions.
4. Always have access to your lock's credentials.
5. Familiarize yourself with all status LED lights notifications.
6. Replace low batteries immediately.
7. Dispose of used batteries according to local laws and regulations.

WARNING: This Manufacturer advises that no lock can provide complete security by itself. This lock may be defeated by forcible or technical means, or evaded by entry elsewhere on the property. No lock can substitute for caution, awareness of your environment, and common sense. Builder's hardware is available in multiple performance grades to suit the application. In order to enhance security and reduce risk, you should consult a qualified locksmith or other security professional.

Regulatory Compliance

This product complies with standards established by the following regulatory bodies:

- Federal Communications Commission (FCC)
- Industry Canada

FCC
This device complies with Part 15 of the FCC Rules. Operation is subject to the following two conditions: (1) this device may not cause harmful interference, and (2) this device must accept any interference received, including interference that may cause undesired operation. This equipment has been tested and found to comply with the limits for a Class B digital device, pursuant to Part 15 of the FCC Rules. These limits are designed to provide reasonable protection against harmful interference in a

residential installation. This equipment generates, uses, and can radiate radio frequency energy and, if not installed and used in accordance with the instructions, may cause harmful interference to radio communications. However, there is no guarantee that interference will not occur in a particular installation. If this equipment does cause harmful interference to radio or television reception, which can be determined by turning the equipment off and on, the user is encouraged to try to correct the interference by one or more of the following measures:

- Reorient or relocate the receiving antenna.
- Increase the separation between the equipment and receiver.

- Connect the equipment into an outlet on a circuit different from that to which the receiver is connected.
 - Consult the dealer or an experienced radio/TV technician for help.
- IMPORTANT!** Changes or modifications not expressly approved by the manufacturer could void the user's authority to operate the equipment.

Industry Canada
This devices contains licence-exempt transmitter(s)/receiver(s) that comply with Innovation, Science and Economic Development Canada's licence-exempt RSS(s). Operation is subject to the following two conditions: (1) This device may not cause interference. (2) This device must accept any interference, including interference that may cause undesired operation of the device.

FCC ID: NUL-UNT1
IC: 3022A-UNT1