

# OFF-THE-ROAD PRODUCT GUIDE

VERSION 25.1

**BRIDGESTONE**  
*Solutions for your journey*



**BRIDGESTONE** / **Firestone**

# A rock-solid strategy

We're excited to introduce our monumental commitment to the planet: the E8 commitment. Endorsed at the highest levels of Bridgestone leadership, the E8 is how we plan to help move the world forward at Bridgestone. We'll lean on the E8 commitment to grow, challenge and ultimately change the way we do business, all in service of customers like you and the Earth we share.



## SUSTAINABILITY

**ENERGY** Committed to the realization of a carbon neutral mobility society.

**ECOLOGY** Committed to advancing sustainable tire technologies and solutions that preserve the environment for future generations.

## SOLUTIONS

**EFFICIENCY** Committed to maximizing productivity through the advancement of mobility.

**EXTENSION** Committed to nonstop mobility and innovation that keeps people and the world moving ahead.

**ECONOMY** Committed to maximizing the economic value of mobility and business operations.

## INSPIRATIONAL

**EMOTION** Committed to inspiring excitement and spreading joy to the world of mobility.

**EASE** Committed to bringing comfort and peace of mind to mobility life.

**EMPOWERMENT** Committed to contributing to a society that ensures accessibility and dignity for all.

Welcome,

The OTR Product Guide is designed to provide quality product information for the **BRIDGESTONE AND FIRESTONE LINES OF OFF-THE-ROAD PRODUCTS.**

Please utilize the Machine Summary sections found on pages 7 and 54 for a convenient overview of both product portfolios.

Both Bridgestone and Firestone products contained within are separated into sections for Radial, Bias, and Specialty tires. All sizes for a tread pattern now appear in one place.



Customer Service

**1-833-733-1754**

[OTRCustomerService@bfusa.com](mailto:OTRCustomerService@bfusa.com)



Bridgestone and Firestone tires are subject to ongoing development. Specifications are current as of January 2025 and are subject to change without notice. Although great care has been taken in producing this guide, we can accept no responsibility for any loss or damage resulting from undetected errors, omissions, or misprints that may have occurred. For complete information regarding tire specifications, consult your local Bridgestone dealer or contact a Bridgestone OTR representative.

# TABLE OF CONTENTS



**MACHINE SUMMARY** RADIAL, BIAS, SPECIALTY ..... 7  
**SPECIFICATION CODES** ..... 7

**METRIC SIZE CONVERSION CHART** ..... 8  
**CONVERSION CHART** STAR RATING TO PLY RATING... 8

**BRIDGESTONE MASTERCORE | MASTERCORE TIRES**

**VRF** V-STEEL ROCK FAST PREMIUM..... 10  
**VRPS** V-STEEL ROCK PREMIUM SERVICE..... 10  
**VREV** V-STEEL ROCK EXTRA V-OPERATION ..... 11

**VRWP** V-STEEL ROCK WEAR PREMIUM ..... 11  
**VZTB** V-STEEL Z-TRACTION BEYOND ..... 12  
**VRDU** V-STEEL DEEP ROCK ULTRA ..... 13

**B | EARTHMOVER, GRADER, LOADER (RADIAL)**

**VFT** V-STEEL F-TRACTION..... 15  
**VSWAS** V-STEEL SNOW WEDGE ALL SEASON ..... 15  
**VSW** V-STEEL SNOW WEDGE ..... 16  
**VHS** V-STEEL HIGH SPEED SERVICE ..... 16  
**VKT** V-STEEL K-TRACTION ..... 17  
**VUT** V-STEEL ULTRA TRACTION ..... 18  
**VRL** V-STEEL R-LUG ..... 19  
**VLT** V-STEEL L-TRACTION ..... 19  
**VMT** V-STEEL M-TRACTION ..... 20  
**VJT** V-STEEL J-TRACTION..... 21  
**VTS** V-STEEL TRACTION AND STABILITY ..... 21  
**VELS** V-STEEL E-LUG S ..... 22  
**VELSL** V-STEEL E-LUG SL ..... 22  
**VMTTP** V-STEEL M-TRACTION PREMIUM ..... 23  
**VMTD** V-STEEL M-TRACTION DEEP 3\*..... 24  
**VMTS** V-STEEL M-TRACTION S ..... 24  
**VRDP** V-STEEL ROCK DEEP PREMIUM..... 25

**VREP** V-STEEL ROCK E-PREMIUM RADIAL ..... 25  
**VRLS** V-STEEL R-LUG S ..... 26  
**VRPS** V-STEEL ROCK PREMIUM SERVICE ..... 27  
**VRQP** V-STEEL ROCK QUARRY PREMIUM ..... 27  
**VZTS** V-STEEL Z-TRACTION S ..... 28  
**VLTS** V-STEEL L-TRACTION S ..... 29  
**VSNT** V-STEEL N-TRACTION ..... 29  
**VSNL** V-STEEL N-LUG ..... 30  
**VSDL** V-STEEL D-LUG ..... 31  
**VSDR** V-STEEL SUPER DEEP ROCK ..... 32  
**VSDT** V-STEEL SUPER DEEP TRACTION ..... 32  
**VSMS** V-STEEL SMOOTH TREAD MINE SERVICE ..... 33  
**VSMS2** V-STEEL SMOOTH TREAD MINE SERVICE 2 ..... 33  
**VMMS** V-STEEL MINING SMOOTH TREAD ..... 34  
**VMDL** V-STEEL MINING D-LUG ..... 34

**B | EARTHMOVER, LOADER, GRADER (BIAS)**

**FG** FAST GRIP ..... 36  
**RL** R-LUG ..... 36  
**VL2** V-LUG 2 ..... 37

**RLS** R-LUG S ..... 37  
**DL** D-LUG ..... 38  
**STMS** SMOOTH TREAD-MS ..... 39

**B | PORT TIRES CONTAINER HANDLERS, CARRIER & INDUSTRIAL**

**VCH** V-STEEL CONTAINER HANDLER..... 41  
**VCHD** V-STEEL CONTAINER HANDLER DEEP..... 41  
**VCHS** V-STEEL CONTAINER HANDLER S ..... 42  
**VHB** V-STEEL H-BLOCK ..... 42  
**VRLS** V-STEEL R-LUG S ..... 43  
**VCLG** V-STEEL CONTAINER LIFTER G-SMOOTH..... 43

**VPCS** V-STEEL PORT CONTAINER STRADDLE ..... 44  
**VSMS** V-STEEL SMOOTH TREAD MINE SERVICE ..... 45  
**STMS** SMOOTH TREAD-MS ..... 45  
**VSDL** V-STEEL D-LUG ..... 46  
**RL** R-LUG ..... 46  
**RLS** R-LUG S ..... 47  
**ELS2** E-LUG S2 ..... 47

**B | CRANE TIRES**

**VHS / VHS2** V-STEEL HIGH SPEED SERVICE ..... 49  
**VGT** V-STEEL G-TRACTION ..... 49

**VSW** V-STEEL SNOW WEDGE ..... 50

**B | OTHERS**

**FG** FAST GRIP ..... 52  
**RR** ROAD ROLLER..... 52  
**VSJ** V-STEEL JAMAL ..... 53

**VSJ** V-STEEL S-BLOCK ..... 53

---

## TABLE OF CONTENTS CONTINUED



---

<b>MACHINE SUMMARY</b> RADIAL, BIAS, SPECIALTY ..... 54	<b>CONVERSION CHART</b> STAR RATING TO PLY RATING .. 55
<b>SPECIFICATION CODES</b> ..... 54	

---

### | **EARTHMOVER , LOADER, GRADER (RADIAL)**

---

<b>VERSABUILT AT</b> VERSABUILT ALL TRACTION..... 57	<b>VERSABUILT DT</b> VERSABUILT DEEP TREAD ..... 58
<b>VERSABUILT AP</b> VERSABUILT ALL PURPOSE ..... 57	

---

### | **EARTHMOVER , LOADER, GRADER (BIAS)**

---

<b>SGG</b> SUPER GROUND GRIP ..... 60	<b>SRG DT RB</b> SUPER ROCK GRIP DEEP TREAD ROAD BUILDER .. 67
<b>SGG RB</b> SUPER GROUND GRIP LOADER DOZER ..... 60	<b>DURALOAD SDT</b> DURALOAD SUPER DEEP TREAD ..... 67
<b>SGG LD</b> SUPER GROUND GRIP LOADER DOZER ..... 61	<b>SDT LD</b> SUPER DEEP TREAD LOADER DOZER ..... 68
<b>SRG</b> SUPER ROCK GRIP ..... 62	<b>DURALOAD PT</b> DURALOAD PLAIN TREAD..... 69
<b>SRG LD</b> SUPER ROCK GRIP LOADER DOZER ..... 63	<b>HTLD</b> HALF TREAD LOADER DOZER ..... 69
<b>SRG DT</b> SUPER ROCK GRIP DEEP TREAD ..... 64	<b>PTLD</b> PLAIN TREAD LOADER DOZER ..... 70
<b>DURALOAD DT</b> DURALOAD DEEP TREAD ..... 65	<b>PTLD UMS</b> PLAIN TREAD LOADER DOZER UNDERGROUND MINING SERVICE .. 70
<b>SRG DT LD</b> SUPER ROCK GRIP DEEP TREAD LOADER DOZER .. 65	
<b>SRG DT LD 2</b> SUPER ROCK GRIP DEEP TREAD LOADER DOZER 2.. 66	

---

### | **PORT**

---

<b>PTLD IDU</b> PLAIN TREAD LOADER DOZER ..... 72	<b>SRG DT</b> SUPER ROCK GRIP DEEP TREAD ..... 73
<b>PT IDU</b> PLAIN TREAD ..... 72	

---

### | **OTHER**

---

<b>DURAFORCE MH</b> DURAFORCE MATERIAL HANDLER... 75	<b>DURAFORCE AP</b> DURAFORCE ASPHALT PAVER..... 75
--	---

**BRIDGESTONE LIMITED WARRANTY**..... 76

**FIRESTONE LIMITED WARRANTY**..... 77

**ADVANCED TIRE MONITORING SERVICES**..... 79

**ASSET MANAGEMENT**..... 80

**OTR TRAINING**..... 81-82

**ENGINEERING SOLUTIONS**..... 83-84

# MACHINE SUMMARY RADIAL, BIAS, SPECIALTY



	TRACTION	ROCK	ROCK DEEP	ROCK EXTRA DEEP	ROCK EXTRA DEEP SMOOTH	INDUSTRIAL & OTHER			
	E-2, G-2, L-2	E-3, G-3, L-3	E-4, L-4, G-4	E-5, L-5	LS-5, LHD-5				
<b>RIGID DUMP TRUCK</b>	VFT	MASTERCORE VRF VMT VRL	MASTERCORE VRDU MASTERCORE VRPS MASTERCORE VREV MASTERCORE VRWP MASTERCORE VZTB  VELS VRLS VELSL VRQP VMTS VZTS VRDP VMTD VREP VMTP VRPS <b>RLS</b>						
<b>ARTICULATED DUMP TRUCK</b>	VKT VSW	VLT VTS VMT	VLTS						
<b>GRADER</b>	VKT VSWAS VSW VUT	VJT							
<b>LOADER DOZER</b>	<b>FG</b> VKT	VSW VSWAS VUT	VLT VMT VJT VTS <b>VL2</b>	<b>RLS</b> VLTS	VSNT VSNT	<b>D-LUG</b> VSDL	VSDR VSDT	<b>STMS</b> VSMS VSMS2	
<b>SCRAPER</b>	VKT	VLT VRL <b>RL</b>	VLTS						
<b>UNDER-GROUND</b>			VSNT VSNT	<b>D-LUG</b> VSDL	VSDR VSDT	<b>STMS</b> VSMS VMDL VSMS2 VMMS			
<b>PORT (CONTAINER HANDLERS, CARRIERS &amp; INDUSTRIAL)</b>						<b>ELS2</b> <b>RL</b> <b>RLS</b> STMS VCH VCHD	VCHS VCLG VHB VPCS VRLS VSDL VSMS		
<b>CRANE</b>						VHS VGT	VHS2 VSW		
<b>OTHER</b>	<b>FG</b> VHS (Coal Hauler) VMTP (Coal Hauler) VUT (Off Road Truck)	RL (Off Road Truck)	VMTP (Coal Hauler) VMTS (Off Road Truck) VRLS (Off Road Truck)			VSMS (Drill)	RR (Compactor Service) VSB (Off Road Truck) VSJ (Sand Service)		

## SPECIFICATION CODES



Each Bridgestone and Firestone Off-The-Road tire has its own specification code that enables the customer to properly identify and match the tire that best meets the conditions under which the tire will be used.

SERVICE	COMPOUND	EXAMPLE	
<b>E:</b> Earthmover <b>D:</b> Loader & Dozer <b>G:</b> Grader <b>L:</b> Subterranean	<b>1A:</b> Standard <b>2A:</b> Cut Resistant <b>2LS:</b> Ultra Cut Resistance <b>2A:</b> Cut Resistant <b>3A:</b> Heat Resistance	<b>NOTE</b>  <b>ADDITIONAL COMPOUND CONSTRUCTION COMMENTS</b>	<b>E3A</b> = Earthmover & Heat Resistant <b>DE2</b> = Combined D2A & E2A  <b>IDU</b> = Industrial <b>LS</b> = Special Cut Resistance <b>N/A</b> = Not Applicable <b>LAC</b> = Load and Carry <b>DAL</b> = Dig and Load <b>NY</b> = Nylon <b>NS</b> = Nylon Steel

# METRIC SIZE CONVERSION CHART



METRIC SIZE	EQUIVALENT SIZE	OPTIONAL SIZE	METRIC SIZE	EQUIVALENT SIZE	OPTIONAL SIZE
385/95R24	14.00R24		600/65R25	N/A	23.5R25
385/95R25	14.00R25		650/65R25	N/A	23.5R25
445/80R25	17.5R25		750/65R25	30/65R25	
445/95R25	16.00R25		775/65R29	N/A	26.5R25
525/80R25	20.5R25		875/65R29	N/A	29.5R25
550/65R25	N/A	20.5R25			

# CONVERSION CHART [STAR RATING TO PLY RATING]



	TIRE SIZE	STAR RATING	CORRESPONDING PLY RATING
<b>GRADER</b>	14.00R24	1★	up to 16
	16.00R24	1★	up to 16
	17.5R25	1★	up to 16
<b>EARTHMOVER</b>	12.00R24	3★	up to 24
	14.00R24	3★	up to 32
	14.00R25	3★	up to 32
	16.00R25	2★	up to 36
	18.00R25	1★	up to 24
		2★	up to 36
	18.00R33	2★	up to 40
	21.00R33	2★	up to 36
	21.00R35	2★	up to 44
	24.00R35	2★	up to 48
	24.00R35	3★	up to 56
	24.00R49	2★	up to 48
	27.00R49	2★	up to 54
	30.00R51	2★	up to 58
	33.00R51	2★	up to 64
	36.00R51	2★	up to 66
	40.00R57	2★	up to 74
	17.5R25	1★	up to 16
	20.5R25	1★	up to 24
		2★	up to 28
	25/65R25	2★	up to 32
	23.5R25	1★	up to 24
		2★	up to 32
	26.5R25	2★	up to 32
	29.5R25	2★	up to 34
	29.5R29	2★	up to 40
	33.25R29	2★	up to 44
	33.5R33	2★	up to 44
	37.5R33	2★	up to 48
	33.25R35	2★	up to 44
	37.25R35	2★	up to 48
	37.5R39	2★	up to 52
	40.5/75R39	2★	up to 54

**BRIDGESTONE** **MASTERCORE**





**BRIDGESTONE** **MASTERCORE**

**VRF**

**E-3**

**RADIAL**

**MASTERCORE  
V-STEEL ROCK FAST**

- Unique Tread Compound: Provides a cooler running tire at higher speeds
- Optimized Tread Pattern: Provides longer and more even wear thanks to its innovative lug arrangement
- Proprietary Casing: Comprised of new compounds and a revolutionary steel cord with new anti-rust and adhesion coatings

CATEGORY	SIZE	PLY/ STAR RATING	COMPOUND/ CONSTRUCTION	TRA/ APPLICATION	ARTICLE #	AVERAGE WEIGHT (LBS)	OTD (32nd)	OVERALL DIAMETER (IN)	OVERALL WIDTH (IN)
<b>GIANT TUBELESS</b>	59/80R63	2★	E3A	E-3	11401	11,369	89	158.3	57.8



**BRIDGESTONE** **MASTERCORE**

**VRPS**

**E-4**

**RADIAL**

**MASTERCORE  
V-STEEL ROCK  
PREMIUM SERVICE**

- Narrow Grooves: High resistance to wear and cutting for extra-heavy-duty mining performance.
- Wide Shoulder Grooves: Provides traction in multiple mining conditions.
- Proprietary Casing: Comprised of new compounds and a revolutionary steel cord with new anti-rust and adhesion coatings.

CATEGORY	SIZE	PLY/ STAR RATING	COMPOUND/ CONSTRUCTION	TRA/ APPLICATION	ARTICLE #	AVERAGE WEIGHT (LBS)	OTD (32nd)	OVERALL DIAMETER (IN)	OVERALL WIDTH (IN)
<b>GIANT TUBELESS</b>	59/80R63	2★	E1A	E-4	11614	12,621	146	158.1	57.8
	59/80R63	2★	E2A	E-4	11615	12,687	146	158.1	57.8
	59/80R63	2★	E3A	E-4	11617	12,595	146	158.1	57.8



**BRIDGESTONE MASTERCORE**

**VREV**

**E-4**

**RADIAL**

**MASTERCORE  
V-STEEL ROCK  
EXTRA  
V-OPERATION**

- Slope and Shoulder Grooves: Set at a depth that minimizes heat generation to allow for maximum workload
- Buttress Fins: Use the flow of air from a rolling tire to force cooler air into the shoulder grooves and across the base of the tire voids in order to draw heat away
- Innovative Pattern: Significant improvement in wear and heat resistance compared to a standard Bridgestone VRPS
- Proprietary Casing: Comprised of new compounds and a revolutionary steel cord with new anti-rust and adhesion coatings

CATEGORY	SIZE	PLY/ STAR RATING	COMPOUND/ CONSTRUCTION	TRA/ APPLICATION	ARTICLE #	AVERAGE WEIGHT (LBS)	OTD (32nd)	OVERALL DIAMETER (IN)	OVERALL WIDTH (IN)
<b>GIANT TUBELESS</b>	53/80R63	2★	E1A	E-4	12315	10,937	139	150.2	51.6
	53/80R63	2★	E2A	E-4	12316	11,010	139	150.2	51.6
	53/80R63	2★	E3A	E-4	12317	10,911	139	150.2	51.6
	59/80R63	2★	E1A	E-4	1266	12,932	149	158.3	57.8
	59/80R63	2★	E2A	E-4	1268	13,025	149	158.3	57.8
	59/80R63	2★	E3A	E-4	4739	12,897	149	158.3	57.8



**BRIDGESTONE MASTERCORE**

**VRWP**

**E-4**

**RADIAL**

**MASTERCORE  
V-STEEL ROCK  
WEAR PREMIUM**

- W Block Design: New tread pattern designed to provide higher wear resistance
- Additional Grooves: Additional grooves reduce pattern strain and provide additional heat reduction
- Curved Grooves: Maximize the W block effect to provide additional resistance to wear
- Proprietary Casing for the Future: Comprised of a new rubber compound and a revolutionary approach to steel cord, with anti-rust and adhesion coating

CATEGORY	SIZE	PLY/ STAR RATING	COMPOUND/ CONSTRUCTION	TRA/ APPLICATION	ARTICLE #	AVERAGE WEIGHT (LBS)	OTD (32nd)	OVERALL DIAMETER (IN)	OVERALL WIDTH (IN)
<b>GIANT TUBELESS</b>	46/90R57	2★	E1A	E-4	11482	8,704	122	141.5	45.1
	46/90R57	2★	E2A	E-4	11483	8,757	122	141.5	45.1
	46/90R57	2★	E3A	E-4	11484	8,684	122	141.5	45.1



**BRIDGESTONE** **MASTERCORE**

**VZTB**

**E-4**

**RADIAL**

**MASTERCORE  
V-STEEL  
Z-TRACTION  
BEYOND**

- Optimized Shoulder Gauge: Improved belt durability
- Full Width Grooves: Aid traction and increased material ejection for superior grip
- Open Groove Areas: Provides maximum traction and increased airflow, thus reducing temperature and extending life
- Proprietary Casing: Comprised of new compounds and a revolutionary steel cord with new anti-rust and adhesion coatings

CATEGORY	SIZE	PLY/ STAR RATING	COMPOUND/ CONSTRUCTION	TRA/ APPLICATION	ARTICLE #	AVERAGE WEIGHT (LBS)	OTD (32nd)	OVERALL DIAMETER (IN)	OVERALL WIDTH (IN)
<b>GIANT TUBELESS</b>	46/90R57	2★	E1A	E-4	11397	8,251	115	140.9	45.1
	46/90R57	2★	E2A	E-4	11396	8,296	115	140.9	45.1
	46/90R57	2★	E3A	E-4	11399	8,232	115	140.9	45.1
	53/80R63	2★	E1A	E-4	012109	10,368	130	150.2	51.6
	53/80R63	2★	E2A	E-4	012110	10,368	130	150.2	51.6
	53/80R63	2★	E3A	E-4	012111	10,368	130	150.2	51.6
	59/80R63	2★	E1A	E-4	012115	12,280	137.1	158.0	58.4
	59/80R63	2★	E3A	E-4	012116	12,280	137.1	158.0	58.4

**NEW**



**BRIDGESTONE** **MASTERCORE**

**VRDU** **NEW**

**E-4**

**RADIAL**

**MASTERCORE  
V-STEEL ROCK  
DEEP ULTRA**

- +35% Deeper Tread Depth Design<sup>3,5</sup>: Designed specifically for rock surfaces and a deeper tread depth vs. conventional VREP<sup>3</sup> and other key competitors<sup>5</sup>. This increased depth helps improve stability and enhance cut and chip resistance.
- 26% Longer Tire Life<sup>4</sup>: With a new deeper tread pattern, plus innovative cooling slopes and center grooves that quickly dissipate heat build-up in the pattern, the VRDU helps extend tire life<sup>4</sup> by 26%.
- +10% Increased Load Capacity<sup>1,2</sup>: Engineered with Bridgestone's proprietary casing MasterCore technology to deliver up to 10% more load capacity vs. Bridgestone conventional tires and key competitors<sup>2</sup>, helping boost productivity with every trip while operating at standard air pressures.

CATEGORY	SIZE	PLY/ STAR RATING	COMPOUND/ CONSTRUCTION	TRA/ APPLICATION	ARTICLE #	AVERAGE WEIGHT (LBS)	OTD (32nd)	OVERALL DIAMETER (IN)	OVERALL WIDTH (IN)
<b>LARGE TUBELESS</b>	27.00R49	2★	E1A	E-4	007454	3,267	113.4	107.1	29.9
	27.00R49	2★	E2A	E-4	007455	3,267	113.4	107.1	29.9
	27.00R49	2★	E2A LS	E-4	007456	3,267	113.4	107.1	29.9
	27.00R49	2★	E3A	E-4	007457	3,267	113.4	107.1	29.9

1. Load capacity comparison based on tire load limits at 700 kpa/102 psi on the Bridgestone MasterCore VRDU 27.00R49 2\* E2A (30,000 kgs/66,000 lbs) vs. Bridgestone conventional 27.00R49 2\* E2A (27,250 kgs/60,000 lbs).

2. Load capacity comparison based on Bridgestone MasterCore VRDU 27.00R49 2\* E2A at 700 kpa/102 psi (30,000 kgs/66,000 lbs) vs. Goodyear RH-4 A+ 27.00R49 2\* at 700 kpa/102 psi (27,250 kgs/60,000 lbs), as reflected in Goodyear's RH-4A+ Product Sheet on their website, and vs. Maxam MS403 27.00R49 2\* S2 (cut-resistant) at 700 KPA/102 psi (27,250 kgs/60,000 lbs), as reflected on the Maxam website.

3. Tire tread depth comparison based on Bridgestone MasterCore VRDU 27.00R49 2\* E2A (OTD 90 mm/ 113.4 32<sup>nd</sup> in) vs. Bridgestone conventional VREP, VRLS 27.00R49 (OTD 66.5 mm/84 32<sup>nd</sup> in).

4. Based on internal field testing comparing operational hours for Bridgestone conventional VRLS 27.00R49 2\* E2A vs. Bridgestone MasterCore VRDU 27.00R49 2\*E2A. Results may vary.

5. Comparison based on Bridgestone MasterCore VRDU 27.00R49 2\* E2A (OTD 90 mm/113.4 32<sup>nd</sup> in) vs. Goodyear RH-4 A+ 27.00R49 2\* (OTD 83mm/ 105 32<sup>nd</sup> in), as reflected in Goodyear's RH-4A+ Product Sheet on their website, and vs. Maxam MS403 27.00R49 2\* S2 cut resistant (OTD 75mm/ 94 32<sup>nd</sup> in), as reflected on the Maxam website.



EARTHMOVER, LOADER, GRADER (RADIAL)



# VFT

E-2

RADIAL

## V-STEEL F-TRACTION

- Tread Pattern Design: Provides excellent flotation and traction in soft, muddy or packed surfaces
- Cooling Running Tire - Heat Resistant: Helps to provide long tread life by generating low heat

CATEGORY	SIZE	PLY/ STAR RATING	COMPOUND/ CONSTRUCTION	TRA/ APPLICATION	ARTICLE #	AVERAGE WEIGHT (LBS)	OTD (32nd)	OVERALL DIAMETER (IN)	OVERALL WIDTH (IN)
<b>SMALL TUBELESS</b>	18.00R33	2★	E3A	E-2	418927	750	38	71.3	19.7
<b>LARGE TUBELESS</b>	27.00R49	2★	E3A	E-2	420077	2,519	55	104.2	29.5



SNOW SERVICE

# VSWAS

L-2, G-2

RADIAL

## V-STEEL SNOW WEDGE ALL SEASON

- Deep Siping: Helps provide excellent traction, even late in tread life, which contributes to better braking and handling on snow, sand and gravel
- Tie Bars within the Sipes: Control movement of the tread blocks for long, even wear while combating the retention and throwing of damaging stones
- Grooved Bevel: Patent-pending grooves in lug walls enhance snow traction by shearing multiple layers of snow, not just the top layer
- Unique Tread Design: Wide grooves and angled lugs help reduce retention and throwing of damaging stones, while contributing to a comfortable ride
- Cut Resistant Compound: Reduces cutting, chipping and puncturing, extending the life of the tire

CATEGORY	SIZE	PLY/ STAR RATING	COMPOUND/ CONSTRUCTION	TRA/ APPLICATION	ARTICLE #	AVERAGE WEIGHT (LBS)	OTD (32nd)	OVERALL DIAMETER (IN)	OVERALL WIDTH (IN)
<b>SMALL TUBELESS</b>	14.00R24	1★	G2A	G-2	5536	302	28	53.0	15
	17.5R25	1★	G2A	G-2	4682	327	31	53.0	17.2
	20.5R25	1★	G2A	G-2	5537	455	36	58.0	21
	23.5R25	1★	DG2	G-2/L-2	12378	710	40	62.9	24



# VSW

E-2, G-2, L-2 | RADIAL

## V-STEEL SNOW WEDGE

- Excellent performance in packed snow or ice
- High-traction tread design for machines used in snow service
- Studs or chains not required
- Heat-resistant compounding for high-speed use

CATEGORY	SIZE	LI/SS PLY/ STAR RATING	COMPOUND/ CONSTRUCTION	TRA/ APPLICATION	ARTICLE #	AVERAGE WEIGHT (LBS)	OTD (32nd)	OVERALL DIAMETER (IN)	OVERALL WIDTH (IN)
SMALL TUBELESS	14.00R24 TG	1★	DG2	G-2/L-2	293970	331	30	53.2	14.6
	16.00R24 TG	1★	-	G-2	293997	458	28	58.5	16.4
	385/95R25 <sup>Δ</sup>	170 E	-	Mobile Crane Service	425078	370	30	53.3	15.5
	17.5R25	1★	DG2	G-2/L-2	420387	382	34	52.8	17.3
	20.5R25	MS	DE2	E-2/L-2	422851	527	37	57.9	20.9
	23.5R25	MS	DE2	E-2/L-2	423750	739	40	62.8	24.4

TG= For use on semi drop center rim only; not for use on flat base rim

Δ = This tire is used for High Speed



# VHS

E-2 | RADIAL

## V-STEEL HIGH SPEED SERVICE

- New Tread Rubber: Delivers longest lasting heavy-duty performance. Combining durability and long wear life with excellent on-road performance
- Non-Directional Tread Pattern (Closed Shoulder & Variable Pitches): Provides excellent flotation, traction and steering response, reducing noise level.
- Smooth Wearing, Reduces Irregular Wear: Provides low vibration and noise and extends tire life

CATEGORY	SIZE	PLY/ STAR RATING	COMPOUND/ CONSTRUCTION	TRA/ APPLICATION	ARTICLE #	AVERAGE WEIGHT (LBS)	OTD (32nd)	OVERALL DIAMETER (IN)	OVERALL WIDTH (IN)
GIANT TUBELESS	36.00R51	2★	E3A	E-2	430280	4,560	55	122.4	40.0



# VKT

E-2, G-2, L-2

RADIAL

## V-STEEL K-TRACTION

- Directional tread pattern
- Cut-resistant tread design for even wear
- Excellent traction and flotation
- Ideal for soft or muddy surfaces

CATEGORY	SIZE	PLY/ STAR RATING	COMPOUND/ CONSTRUCTION	TRA/ APPLICATION	ARTICLE #	AVERAGE WEIGHT (LBS)	OTD (32nd)	OVERALL DIAMETER (IN)	OVERALL WIDTH (IN)	
<b>SMALL TUBE TYPE</b>	14.00R24	3★	E2A	E-2	263346	336	32	53.2	15.4	
	14.00R24 TG	1★	G2A	G-2	263354	307	32	53.2	14.6	
<b>SMALL TUBELESS</b>	16.00R24 TG	1★	G2A	G-2	284971	433	36	58.0	16.5	
	17.5R25	1★	EG2	E-2/G-2	296341	319	34	52.7	17.3	
	17.5R25	1★	D2A	L-2	263389	364	34	52.7	17.3	
	20.5R25	1★	D2A	L-2	263397	478	38	57.9	20.9	
	23.5R25	2★	E1A	E-2	261351	655	42	63.1	24.1	
	23.5R25	1★	D2A	L-2	263400	695	42	63.1	24.1	
	26.5R25	2★	E1A	E-2	275638	864	49	68.2	26.7	
	26.5R25	1★	D2A	L-2	275611	995	49	68.2	26.7	
	<b>LARGE TUBELESS</b>	29.5R29	2★	E2A	E-2	276235	1,254	55	77.1	30.1
		37.5R39	2★	E1A	E-2	419915	2,661	64	99.4	38.7

TG = For use on semi drop center rim only; not for use on flat base rim



# VUT

E-2, G-2, L-2

RADIAL

## V-STEEL ULTRA TRACTION

- Non-Directional Tread Pattern Design: Provides superior traction and excellent self-cleaning
- Light Weight Design: Provides superior maneuverability and fuel consumption
- Heat Resistance, Traction And Flotation

CATEGORY	SIZE	PLY/ STAR RATING	COMPOUND/ CONSTRUCTION	TRA/ APPLICATION	ARTICLE #	AVERAGE WEIGHT (LBS)	OTD (32nd)	OVERALL DIAMETER (IN)	OVERALL WIDTH (IN)
<b>SMALL TUBELESS</b>	365/80R20	1★	DE2	E-2/L-2	424757	140	26	42.8	13.7
	405/70R20	1★	DE2	E-2/L-2	425469	160	25	43.0	15.7
	13.00R24 TG	1★	G2A	G-2	299804	231	32	50.8	14.1
	14.00R24 TG	1★	G2A	G-2	293954	277	32	53.1	14.7
	15.5R25	2★	DG2	G-2/L-2	424609	245	34	50.0	15.1
	17.5R25	1★	DG2	G-2/L-2	422827	296	35	52.8	17.5
	20.5R25	1★	DG2	G-2/L-2	420344	394	39	58.0	21.0
	23.5R25	1★	DG2	G-2/L-2	422703	688	42	63.0	24.4

TG = For use on semi drop center rim only, not for use on flat base rim



# VRL

E-3

RADIAL

## V-STEEL R-LUG

- Rock service pattern
- Durable-casing design resists fatigue
- Tough lug pattern for excellent traction and cut resistance
- Suitable for rocky or gravel surfaces in mines, quarries and construction sites

CATEGORY	SIZE	PLY/ STAR RATING	COMPOUND/ CONSTRUCTION	TRA/ APPLICATION	ARTICLE #	AVERAGE WEIGHT (LBS)	OTD (32nd)	OVERALL DIAMETER (IN)	OVERALL WIDTH (IN)
<b>LARGE TUBELESS</b>	29.5R35	2★	E1A	E-3	419591	1,612	50	83.5	30.2
	33.25R35	2★	E1A	E-3	418498	1,968	62	87.7	33.3
	40.5/75R39	2★	E1A	E-3	418501	3,012	61	101.9	39.4
	27.00R49	2★	E3A	E-3	418552	2,959	54	104.1	29.5



# VLT

E-3, L-3

RADIAL

## V-STEEL L-TRACTION

- Innovative tread lugs expand and compress to provide powerful traction and self-cleaning capability
- Large contact footprint provides excellent traction, flotation and rider comfort
- Solid performance and maneuverability on wet, soft or muddy surfaces

CATEGORY	SIZE	PLY/ STAR RATING	COMPOUND/ CONSTRUCTION	TRA/ APPLICATION	ARTICLE #	AVERAGE WEIGHT (LBS)	OTD (32nd)	OVERALL DIAMETER (IN)	OVERALL WIDTH (IN)
<b>SMALL TUBELESS</b>	20.5R25	MS	DE2	E-3/L-3	421952	540	50	59	20.9
	23.5R25	MS	DE2	E-3/L-3	421960	799	54	63.9	24.3
	750/65R25	MS	DE2	E-3/L-3	420220	1,024	54	64.0	30.1
	26.5R25	MS	DE2	E-3/L-3	421979	1,040	57	68.8	26.9
	29.5R25	MS	DE2	E-3/L-3	421987	1,303	60	73.9	30.0
<b>LARGE TUBELESS</b>	33.25R29	2★	E2A	E-3	427645	1,830	68	81.9	33.6
	37.25R35	2★	E1A	E-3	427985	2,530	75	94.0	37.6
	37.25R35	2★	E2A	E-3	428002	2,654	75	94.0	37.6
	40.5/75R39	2★	E1A	E-3	428172	3,340	74	102.6	39.4
	40.5/75R39	2★	E2A	E-3	428138	3,581	74	102.6	39.4



# VMT

E-3, L-3

RADIAL

## V-STEEL M-TRACTION

- Non-directional tread pattern for even wear
- Normal depth tread features strong resistance to heat buildup
- Excellent traction in a variety of conditions

CATEGORY	SIZE	PLY/ STAR RATING	COMPOUND/ CONSTRUCTION	TRA/ APPLICATION	ARTICLE #	AVERAGE WEIGHT (LBS)	OTD (32nd)	OVERALL DIAMETER (IN)	OVERALL WIDTH (IN)
<b>SMALL TUBELESS</b>	17.5R25	1★	D2A	L-3	419346	376	38	52.7	17.4
	20.5R25	1★	D2A	L-3	418110	529	42	58.3	20.9
	20.5R25	2★	E1A	E-3	418161	514	42	58.3	20.9
	23.5R25	1★	D2A	L-3	418137	740	44	63.0	24.3
	23.5R25	2★	E1A	E-3	418196	708	44	63.0	24.3
	23.5R25	2★	E2A	E-3	418773	722	44	63.0	24.3
	26.5R25	1★	D2A	L-3	419672	1,033	48	68.3	26.9
	26.5R25	2★	E1A	E-3	419311	904	48	68.3	26.9
	29.5R25	1★	D2A	L-3	419680	1,261	53	73.4	30.0
	29.5R25	2★	E1A	E-3	419338	1,269	53	73.4	30.0
<b>LARGE TUBELESS</b>	30.00R51	2★	E3A	E-3	422207	3,551	57	112.2	33.6
<b>GIANT TUBELESS</b>	33.00R51	2★	E1A	E-3	422436	4,223	60	117.6	36.2
	33.00R51	2★	E3A	E-3	420689	4,222	60	117.6	36.2
	40.00R57	2★	E1A	E-3	427016	6,966	81	138.3	43.6
	40.00R57	2★	E2A	E-3	427050	6,966	81	138.3	43.6
	40.00R57	2★	E3A	E-3	427033	7,185	81	138.3	43.6



## VJT

L-3, G-3

RADIAL

### V-STEEL J-TRACTION

- Provides a smooth, stable ride across rugged environments while resisting cutting damage
- Unique vertical-column center tread blocks minimize vibration for operator comfort
- Double-reinforced tie bars reduce friction to help prevent irregular center block wear and extend tread wear
- Sidewall protectors enhance cut resistance when operating with heavy loads

CATEGORY	SIZE	PLY/ STAR RATING	COMPOUND/ CONSTRUCTION	TRA/ APPLICATION	ARTICLE #	AVERAGE WEIGHT (LBS)	OTD (32nd)	OVERALL DIAMETER (IN)	OVERALL WIDTH (IN)
<b>SMALL TUBELESS</b>	17.5R25	1★	D2A	L-3	431538	366	38	53.2	17.4
	20.5R25	1★	DG2	L-3, G-3	3994	496	42	58.3	20.9
	23.5R25	1★	D2A	L-3	431198	729	44	63.0	24.3
	23.5R25	2★	D2A	L-3	6536	729	44	63.0	24.3
	26.5R25	1★	D2A	L-3	431215	1,003	48	68.4	26.9
	29.5R25	1★	D2A	L-3	431555	1,237	53	73.4	30.0
	29.5R25	2★	D2A	L-3	4071	1,260	53	73.4	30.0



## VTS

E-3, L-3

RADIAL

### V-STEEL TRACTION AND STABILITY

- Designed for stability and improved ride
- Stone rejectors reduce stone retention and protect casing
- Self-cleaning tread design for optimum traction
- Designed primarily for wheeled loaders

CATEGORY	SIZE	PLY/ STAR RATING	COMPOUND/ CONSTRUCTION	TRA/ APPLICATION	ARTICLE #	AVERAGE WEIGHT (LBS)	OTD (32nd)	OVERALL DIAMETER (IN)	OVERALL WIDTH (IN)
<b>SMALL TUBELESS</b>	550/65R25	1★	D2A	L-3	429821	525	41	53.1	21.5
	650/65R25	1★	D2A	L-3	424099	678	47	59.1	25.3
	750/65R25	1★	D2A	L-3	429838	1,003	52	63.3	29.3
<b>LARGE TUBELESS</b>	775/65R29	1★	D2A	L-3	424277	1,158	54	68.5	30.5
	875/65R29	MS	DE2	E-3/L-3	431283	1,559	60	73.4	33.5



## VELS

E-4

RADIAL

### V-STEEL E-LUG S

- Deep non-directional rock tread and sidewall protection
- Special compounds provide exceptional wear and cut resistance
- Suited for abrasive roads, such as rocky, gravel or packed surfaces

CATEGORY	SIZE	PLY / STAR RATING	COMPOUND / CONSTRUCTION	TRA / APPLICATION	ARTICLE #	AVERAGE WEIGHT (LBS)	OTD (32nd)	OVERALL DIAMETER (IN)	OVERALL WIDTH (IN)
<b>SMALL TUBELESS</b>	18.00R25	2★	E2A	E-4	419281	791	63	64.6	20.3
	18.00R33	2★	E2A LS	E-4	422177	960	62	73.1	20.2
	18.00R33	2★	E1A	E-4	275867	960	62	73.1	20.2
	18.00R33	2★	E2A	E-4	276316	960	62	73.1	20.2
	21.00R35	2★	E2A	E-4	276324	1,469	74	80.5	22.7
<b>GIANT TUBELESS</b>	40.00R57	2★	E3A	E-4	416921	7,920	115	140.2	44.4



## VELSL

E-4

RADIAL

### V-STEEL E-LUG SL

- Strong resistance to heat buildup, cutting and chipping
- Suitable for large dump trucks engaged in earthmoving work

CATEGORY	SIZE	PLY / STAR RATING	COMPOUND / CONSTRUCTION	TRA / APPLICATION	ARTICLE #	AVERAGE WEIGHT (LBS)	OTD (32nd)	OVERALL DIAMETER (IN)	OVERALL WIDTH (IN)
<b>GIANT TUBELESS</b>	37.00R57	2★	E3A	E-4	424587	6,095	97	133.4	41.1



# VMTP

E-4 RADIAL

## V-STEEL M-TRACTION PREMIUM

- Premium deep tread delivers exceptional tread wear
- Excellent lateral and side traction performance
- Special compounds for exceptional wear and cut resistance
- Ideal for muddy surfaces

CATEGORY	SIZE	PLY/ STAR RATING	COMPOUND/ CONSTRUCTION	TRA/ APPLICATION	ARTICLE #	AVERAGE WEIGHT (LBS)	OTD (32nd)	OVERALL DIAMETER (IN)	OVERALL WIDTH (IN)
<b>SMALL TUBELESS</b>	18.00R33	2★	E1A	E-4	422746	967	69	73.6	20.3
	18.00R33	2★	E2A	E-4	423866	979	69	73.6	20.3
	18.00R33	2★	E2A LS	E-4	422754	979	69	73.6	20.3
	21.00R33	2★	E2A	E-4	428818	1,378	77	78.7	22.8
	21.00R35	2★	E1A	E-4	422770	1,400	77	80.6	22.7
	21.00R35	2★	E2A	E-4	422789	1,444	77	80.6	22.7
<b>LARGE TUBELESS</b>	24.00R35	2★	E1A	E-4	3542	1,831	86	86.0	26.0
	24.00R35	2★	E2A	E-4	422991	1,831	86	86.0	26.0
	24.00R35	2★	E2A LS	E-4	423009	1,828	86	86.0	26.0
	24.00R35	2★	E3A	E-4	3035	1,786	86	86.0	26.0
	27.00R49	2★	E1A	E-4	422479	2,978	92	106.3	29.5
	27.00R49	2★	E2A	E-4	422460	3,018	92	106.3	29.5
	27.00R49	2★	E2A LS	E-4	423106	3,001	92	106.3	29.5
	27.00R49	2★	E3A	E-4	422461	3,017	92	106.3	29.5
<b>GIANT TUBELESS</b>	33.00R51	2★	E1A	E-4	423084	4,940	113	120.6	36.2
	33.00R51	2★	E2A	E-4	423076	4,974	113	120.6	36.2
	33.00R51	2★	E2A LS	E-4	423041	4,946	113	120.6	36.2
	33.00R51	2★	E3A	E-4	3878	4,850	113	120.6	36.2



## VMTD

E-4

RADIAL

### V-STEEL M-TRACTION DEEEP

- Bridgestone's First Large Size Three Star Rated Tire With New Casing Structure: Delivers 8% more load capacity, offering excellent durability†
- Extra Deep Tread, 13% More Than VMTP: Delivers extra-long tread life and provides excellent wear, slip resistance in muddy conditions†
- Innovative Design Pattern For Cooling Running Tire: Provides 6% higher TMPH, helping improve productivity†

CATEGORY	SIZE	PLY/ STAR RATING	COMPOUND/ CONSTRUCTION	TRA/ APPLICATION	ARTICLE #	AVERAGE WEIGHT (LBS)	OTD (32nd)	OVERALL DIAMETER (IN)	OVERALL WIDTH (IN)
<b>LARGE TUBELESS</b>	24.00R35	3*	E1A	E-4	007422	1,885	97	86.3	26
	24.00R35	3*	E2A	E-4	007423	1,885	97	86.3	26
	24.00R35	3*	E2A LS	E-4	007424	1,885	97	86.3	26
	24.00R35	3*	E3A	E-4	007425	1,885	97	86.3	26

† Comparison based on Bridgestone 24.00R35 VMTP 2\* VS. Bridgestone 24.00R35 VMTD 3\*. Actual Results may vary.



## VMTS

E-4

RADIAL

### V-STEEL M-TRACTION S

- Exceptional side-slip resistance
- Non-directional tread design ideal for muddy or soft surfaces
- Wear resistance for longer tread life
- Self-cleaning tread design

CATEGORY	SIZE	PLY/ STAR RATING	COMPOUND/ CONSTRUCTION	TRA/ APPLICATION	ARTICLE #	AVERAGE WEIGHT (LBS)	OTD (32nd)	OVERALL DIAMETER (IN)	OVERALL WIDTH (IN)
<b>SMALL TUBELESS</b>	14.00R25	3*	E3A	E-4	295213	402	48	55.4	15.4
	16.00R25	2*	E2A LS	E-4	422347	606	57	60.4	17.7
	18.00R25	2*	E2A	E-4	418323	752	64	65.1	19.9



## VRDP

E-4

RADIAL

### V-STEEL ROCK DEEP PREMIUM

- Extra-Deep Rock Tread Design: Improves traction in rocky conditions
- Reinforced Sidewall Protectors: For reduced sidewall damage and cut resistance
- Increased Air Chamber Capacity: Provides lower operating temperatures, resulting in extended tire life

CATEGORY	SIZE	PLY/ STAR RAT- ING	COMPOUND/ CONSTRUC- TION	TRA/ APPLICATION	ARTICLE #	AVERAGE WEIGHT (LBS)	OTD (32nd)	OVERALL DIAMETER (IN)	OVERALL WIDTH (IN)
<b>GIANT TUBELESS</b>	33.00R51	2★	E3A	E-4	427322	5,160	110	120.5	36.7
	42/90R57	2★	E1A	E-4	425282	7,200	122	136.1	41.7
	42/90R57	2★	E2A	E-4	425299	7,200	122	136.1	41.7
	42/90R57	2★	E2A LS	E-4	425316	7,200	122	136.1	41.7
	42/90R57	2★	E3A	E-4	425333	7,200	122	136.1	41.7
	40.00R57	2★	E2A	E-4	425724	8,488	122	140.6	43.9



## VREP

E-4

RADIAL

### V-STEEL ROCK E-PREMIUM RADIAL

- Low heat generation
- Exceptional tread life
- Unique two-stage lug design for stability
- Suitable for 100-ton rigid dump trucks running at high speeds, which can cause extreme heat buildup inside the tire

CATEGORY	SIZE	PLY/ STAR RATING	COMPOUND/ CONSTRUCTION	TRA/ APPLICATION	ARTICLE #	AVERAGE WEIGHT (LBS)	OTD (32nd)	OVERALL DIAMETER (IN)	OVERALL WIDTH (IN)
<b>LARGE TUBELESS</b>	27.00R49	2★	E1A	E-4	431385	3,088	84	105.9	29.5
	27.00R49	2★	E2A	E-4	431402	3,060	84	105.9	29.5
	27.00R49	2★	E2A LS	E-4	431419	3,050	84	105.9	29.5
	27.00R49	2★	E3A	E-4	431368	3,039	84	105.9	29.5



# VRLS

E-4

RADIAL

## V-STEEL R-LUG S

- Unique non-directional rock-service tread pattern provides excellent traction
- Excellent haulage performance on rock, gravel or packed earth
- Special compounds provide excellent wear and cut resistance for long tread life
- Rock-deep tread for long life and sidewall protectors for additional protection

CATEGORY	SIZE	PLY/ STAR RATING	COMPOUND/ CONSTRUCTION	TRA/ APPLICATION	ARTICLE #	AVERAGE WEIGHT (LBS)	OTD (32nd)	OVERALL DIAMETER (IN)	OVERALL WIDTH (IN)
<b>SMALL TUBELESS</b>	14.00R25	3★	E2A	E-4	263419	427	49	55.2	15.4
	<hr/>								
<b>LARGE TUBELESS</b>	24.00R35	2★	E1A	E-4	275883	1,712	74	85.6	26.0
	24.00R35	2★	E2A	E-4	419141	1,732	74	85.6	26.0
	24.00R35	2★	E2A LS	E-4	422169	1,730	74	85.6	26.0
	27.00R49	2★	E1A	E-4	275905	2,989	84	105.8	29.5
	27.00R49	2★	E2A	E-4	276340	3,007	84	105.8	29.5
	27.00R49	2★	E2A LS	E-4	419648	2,990	84	105.8	29.5
	27.00R49	2★	E3A	E-4	420042	2,988	84	105.8	29.5
	30.00R51	2★	E3A	E-4	420603	3,851	94	114.3	33.6
<b>GIANT TUBELESS</b>	36.00R51	2★	E1A	E-4	421898	5,501	109	126.1	40.0
	36.00R51	2★	E2A	E-4	276367	5,533	109	126.1	40.0
	36.00R51	2★	E2A LS	E-4	419559	5,501	109	126.1	40.0
	36.00R51	2★	E3A	E-4	276405	5,499	109	126.1	40.0
	<hr/>								



# VRPS

E-4

RADIAL

## V-STEEL ROCK PREMIUM SERVICE

- Ultra-durable casing for extra-long tread life
- Low heat generation
- Recommended for use in copper, iron, gold, coal, and other mines that require extra protection against tire wear, cuts, and punctures

CATEGORY	SIZE	PLY/ STAR RATING	COMPOUND/ CONSTRUCTION	TRA/ APPLICATION	ARTICLE #	AVERAGE WEIGHT (LBS)	OTD (32nd)	OVERALL DIAMETER (IN)	OVERALL WIDTH (IN)
<b>GIANT TUBELESS</b>	33.00R51	2★	E1A	E-4	3798	5,200	110	120.5	36.2
	33.00R51	2★	E2A	E-4	3795	5,200	110	120.5	36.2
	33.00R51	2★	E2A LS	E-4	3796	5,200	110	120.5	36.2
	33.00R51	2★	E3A	E-4	3797	5,200	110	120.5	36.2
	53/80R63	2★	E1A	E-4	429379	10,600	139	150.7	51.3
	53/80R63	2★	E2A	E-4	429396	10,600	139	150.7	51.3
	53/80R63	2★	E3A	E-4	429413	10,699	139	150.7	51.3



# VRQP

E-4

RADIAL

## V-STEEL ROCK QUARRY PREMIUM

- Specially developed for mid-sized rigid dump trucks working in quarries and other tough operations
- Extra deep tread, for longer tire life and superior cut resistance. Greatly reduces total tire costs for replacement.
- Innovative tread design for improved traction
- Reinforced shoulder design for reduced sidewall damage

CATEGORY	SIZE	PLY/ STAR RATING	COMPOUND/ CONSTRUCTION	TRA/ APPLICATION	ARTICLE #	AVERAGE WEIGHT (LBS)	OTD (32nd)	OVERALL DIAMETER (IN)	OVERALL WIDTH (IN)
<b>SMALL TUBELESS</b>	18.00R33	2★	E2A	E-4	431504	1,080	81	74.4	20.3
<b>LARGE TUBELESS</b>	24.00R35	2★	E2A	E-4	431521	1,930	90	86.4	26.0
	24.00R35	2★	E2A LS	E-4	427900	1,933	90	86.4	26.0



# VZTS

E-4

RADIAL

## V-STEEL Z-TRACTION S

- Non-Directional Block Design: Ensures superior traction on rocky surfaces
- Special Compounds: Delivers excellent wear and cut resistance to maximize tire life
- Deep Tread Pattern Design With Sidewall Protectors: Provides exceptional side-slipping resistance and excellent traction
- Suitable for rocky surfaces

CATEGORY	SIZE	PLY/ STAR RATING	COMPOUND/ CONSTRUCTION	TRA/ APPLICATION	ARTICLE #	AVERAGE WEIGHT (LBS)	OTD (32nd)	OVERALL DIAMETER (IN)	OVERALL WIDTH (IN)
<b>GIANT TUBELESS</b>	37.00R57	2★	E1A	E-4	422681	6,646	110	134.7	41.1
	37.00R57	2★	E2A	E-4	422975	6,681	110	134.7	41.1
	37.00R57	2★	E2A LS	E-4	422800	6,647	110	134.7	41.1
	37.00R57	2★	E3A	E-4	422819	6,644	110	134.7	41.1
	40.00R57	2★	E1A	E-4	422037	8,059	115	141.1	44.9
	40.00R57	2★	E2A	E-4	422584	8,099	115	141.1	44.9
	40.00R57	2★	E3A	E-4	421324	8,058	115	141.1	44.9



## VLTS

E-4, L-4

RADIAL

### V-STEEL L-TRACTION S

- Deep Tread: Helps provide excellent traction on gravel, rocky and packaged earth surfaces in mines, quarries and construction sites
- Durable Compound: Delivers outstanding cut resistance and long tread life
- Open-Shoulder Tread Design: Promotes self-cleaning

CATEGORY	SIZE	PLY/ STAR RATING	COMPOUND/ CONSTRUCTION	TRA/ APPLICATION	ARTICLE #	AVERAGE WEIGHT (LBS)	OTD (32nd)	OVERALL DIAMETER (IN)	OVERALL WIDTH (IN)
<b>SMALL TUBELESS</b>	20.5R25	MS	DE2	E-4/L-4	424102	636	62	58.2	20.9
	23.5R25	MS	DE2	E-4/L-4	422738	875	68	63.6	24.1
	26.5R25	2★	E2A LS	E-4	422711	1,130	74	68.3	26.7
	750/65R25	2★	E2A LS	E-4	427560	1,080	69	63.9	30.1
	29.5R25	2★	E2A LS	E-4	422916	1,470	82	73.4	30.0
<b>LARGE TUBELESS</b>	875/65R29	MS	DE2	E-4/L-4	000470	1,551	76	74.0	33.8
	33.25R29	2★	E2A	E-4	011031	1,922	87	82.4	33.6



## VSNT

E-4, L-4

RADIAL

### V-STEEL N-TRACTION

- Unique Non-Directional Traction Pattern: Provides optimum traction without compromising tread life
- Wide Tread: Helps resist cuts and impact damage
- Groove Stone Ejectors: Provide better stone expulsion to protect belts from potential stone drilling damage and enhance casing durability
- Square Shoulder Design: Pushes debris aside, protecting the sidewall from cuts and damage
- Radial multiple-star construction for heavy-duty performance

CATEGORY	SIZE	PLY/ STAR RATING	COMPOUND/ CONSTRUCTION	TRA/ APPLICATION	ARTICLE #	AVERAGE WEIGHT (LBS)	OTD (32nd)	OVERALL DIAMETER (IN)	OVERALL WIDTH (IN)
<b>SMALL TUBELESS</b>	26.5R25	MS	DE2	E-4/L-4	423971	1,234	72	70.0	27.0
	29.5R25	MS	DE2	E-4/L-4	424196	1,589	76	75.0	30.4
<b>LARGE TUBELESS</b>	29.5R29	2★	D2A	L-4	3991	1,695	76	78.7	30.5
	35/65R33	MT	DUH	E-4/L-4	3789	2,332	79	81.7	35.6



# VSNL

L-4

RADIAL

## V-STEEL N-LUG

- Rock Pattern Design: Offers outstanding performance, traction, stability and comfort in severe rock applications
- Sidewall Protection: Reduces cuts and other damage
- Durable Heavy-Duty Casing
- Multi-Purpose Loader Operations - Underground Mining, Pits & Quarries

CATEGORY	SIZE	PLY/ STAR RATING	COMPOUND/ CONSTRUCTION	TRA/ APPLICATION	ARTICLE #	AVERAGE WEIGHT (LBS)	OTD (32nd)	OVERALL DIAMETER (IN)	OVERALL WIDTH (IN)
<b>SMALL TUBE TYPE</b>	14.00R20	2★	D2A	L-4	157376	361	43	47.1	14.2
<b>LARGE TUBELESS</b>	35/65R33	2★	D2A	L-4	429277	2,281	79	81.7	34.6
<b>GIANT TUBELESS</b>	45/65R45	2★	D2A	L-4	429855	4,825	95	107.5	44.2



# VSDL

L-5 | RADIAL

## V-STEEL D-LUG

- Extra-deep tread and shoulder protection offer cut and impact resistance, stability, and ride comfort
- Excellent traction in severe or rocky conditions
- Designed for extra-heavy-duty loader performance
- First 45/65R45 3\* Wheel Loader Tire with increased load capacity needed for next generation loaders in high production quarries and mines. Recommended for CAT 992 & KOM WA900 equipment. Rated Load 132,500 lbs @ 116 psi

CATEGORY	SIZE	PLY/ STAR RATING	COMPOUND/ CONSTRUCTION	TRA/ APPLICATION	ARTICLE #	AVERAGE WEIGHT (LBS)	OTD (32nd)	OVERALL DIAMETER (IN)	OVERALL WIDTH (IN)
<b>SMALL TUBE TYPE</b>	8.25R15	2★	D2A	L-5	424544	158	60	34.6	9.8
	10.00R15	2★	D2A	L-5	157384	182	60	35.6	11.3
	12.00R20	2★	D2A	L-5	157392	325	72	46.0	12.6
<b>SMALL TUBELESS</b>	14.5R15	2★	D2A	L-5	152455	212	60	35.4	14.1
	17.5R25	1★	D2A	L-5	423165	585	86	55.1	17.3
	17.5R25	2★	D2A	L-5	19116	606	86	55.1	17.3
	20.5R25	1★	D2A	L-5	421855	881	99	61.1	20.9
	23.5R25	1★	D2A	L-5	420565	1,175	110	65.8	24.1
	23.5R25	2★	D2A	L-5	422428	1,162	110	65.8	24.1
	26.5R25	1★	D2A	L-5	420573	1,582	120	70.5	26.9
	26.5R25	2★	D2A	L-5	421332	1,594	120	70.5	26.9
	29.5R25	1★	D2A	L-5	420581	2,007	131	75.8	30.2
	29.5R25	2★	D2A	L-5	423432	2,045	131	75.8	30.2
<b>LARGE TUBELESS</b>	29.5R29	2★	D2A	L-5	421758	2,159	132	79.1	30.6
	33/65R29	2★	D2A	L-5	011334	2,145	114	75.9	33.2
	35/65R33	2★	D2A	L-5	425010	2,720	120	81.7	34.6
	35/65R33	2★	IDU	L-5	429872	2,720	120	81.7	36.6
	45/65R39	1★	D2A	L-5	423378	4,848	146	101.6	42.3
	45/65R39	1★	D2A LS	L-5	423386	4,842	146	101.6	42.3
<b>GIANT TUBELESS</b>	45/65R45	2★	D2A	L-5	426047	5,492	141	107.5	44.2
	45/65R45	2★	D2A LC	L-5	422843	5,484	141	107.5	44.2
	45/65R45	3★	D2A LC	L-5	011370	5,492	141	107.5	44.2
	50/65R51	2★	D2A	L-5	428053	7,992	161	120.9	50.3
	55.5/80R57	2★	D2A	L-5	422568	13,544	158	147.2	54.9
	60/80R57	2★	D2A	L-5	430229	15,200	149	155.6	58.7



## VSDR

L-5

RADIAL

### V-STEEL SUPER DEEP RADIAL

- Squared Off Shoulder Design: Helps protect tire from cut and impact damage and extends tire life
- Unique Bead Shape And Stiff Casing: Combat flexing and fatigue and help reduce sidewall damage
- Extra Deep Tread Design With Lug Shape: For severe rocky surfaces, providing excellent traction, stability and comfortable ride

CATEGORY	SIZE	PLY/ STAR RATING	COMPOUND/ CONSTRUCTION	TRA/ APPLICATION	ARTICLE #	AVERAGE WEIGHT (LBS)	OTD (32nd)	OVERALL DIAMETER (IN)	OVERALL WIDTH (IN)
<b>SMALL TUBELESS</b>	20.5R25	2*	D2A	L-5	000997	871	98	61.1	20.9



## VS DT

L-5

RADIAL

### V-STEEL SUPER DEEP TRACTION

- Excellent traction on moderate to severe conditions for underground mining, pits and quarries
- Extra-heavy-duty 1\* and 2\* radial casing designs
- Extra-deep tread for excellent traction, comfortable ride, superior cut resistance and long tread life
- Wide tread helps minimize sidewall cuts

CATEGORY	SIZE	PLY/ STAR RATING	COMPOUND/ CONSTRUCTION	TRA/ APPLICATION	ARTICLE #	AVERAGE WEIGHT (LBS)	OTD (32nd)	OVERALL DIAMETER (IN)	OVERALL WIDTH (IN)
<b>SMALL TUBELESS</b>	23.5R25	1*	D2A	L-5	423548	1,135	100	65.4	24.4
	26.5R25	1*	D2A	L-5	423955	1,494	111	69.9	27.4
	29.5R25	2*	D2A	L-5	424145	1,902	121	75.0	30.7
<b>LARGE TUBELESS</b>	29.5R29	2*	D2A	L-5	424420	1,956	121	78.3	30.7
	35/65R33	2*	D2A	L-5	002111	2,747	121	81.7	35.0



## VSMS

L-5S

RADIAL

### V-STEEL SMOOTH TREAD MINE SERVICE

- Extra-Deep Tread: For severe conditions such as rocky surfaces, underground mines, open pits and quarries
- Tough Tread Compound: Delivers maximum cut and wear resistance
- Tread Wear Indicator: Shows depth of wear on tire
- Extra-Heavy-Duty 2\* All - Steel Casing Design

CATEGORY	SIZE	PLY/ STAR RATING	COMPOUND/ CONSTRUCTION	TRA/ APPLICATION	ARTICLE #	AVERAGE WEIGHT (LBS)	OTD (32nd)	OVERALL DIAMETER (IN)	OVERALL WIDTH (IN)
<b>SMALL TUBE TYPE</b>	9.00R20	2*	D2A	L-5S	150908	236	64	41.5	10.2
	12.00R20	2*	D2A	L-5S	150916	351	72	46.2	12.3
	12.00R24	2*	D2A	L-5S	150924	410	72	50.2	12.3
	14.00R24	2*	D2A	L-5S	211240	603	91	54.8	15.4
<b>SMALL TUBELESS</b>	18.00R25	2*	D2A	L-5S	422282	1,092	106	65.9	20.2
<b>LARGE TUBELESS</b>	35/65R33	2*	D2A	L-5S	006394	2,921	122	81.5	34.6



## VSMS2

L-5S

RADIAL

### V-STEEL SMOOTH TREAD MINE SERVICE 2

- Optimized Belt And Enhanced Bead Cord Structure: Allows for increased load capacity equal to 3-star rating at 2-star rating air pressure for optimal performance
- Innovative Sidewall Shape: Delivers a 30% decrease++ in the frequency of sidewall cuts reaching the ply, and increases total life by 5%\* \*Performance improvements are comparisons with Bridgestone VSMS tire.
- 86-132/32nds Deep Tread: For long wear and protection in severe operating environments
- Designed for operating over severe rocky surfaces, in underground mines, open pits and quarries

CATEGORY	SIZE	PLY/ STAR RATING	COMPOUND/ CONSTRUCTION	TRA/ APPLICATION	ARTICLE #	AVERAGE WEIGHT (LBS)	OTD (32nd)	OVERALL DIAMETER (IN)	OVERALL WIDTH (IN)
<b>SMALL TUBELESS</b>	17.5R25	2*	D2A	L-5S	4724	642	86	54	17.8
	29.5R25	2*	D2A	L-5S	6392	2,405	131	75.1	31.1



# VMMS NEW

LHD-5S | RADIAL

## V-STEEL MINING SMOOTH TREAD

- +15% Load Capacity: Advanced 2-star technology with strengthened bead structure and enhanced belt package. Provides +15% load capacity without increasing inflation pressure<sup>1</sup>
- +24% Cut Resistance: Engineered with a vertical sidewall shape and wider outer belt. Improved cut resistance by 24% helping reduce operational costs.
- +10% Wear Life<sup>3</sup>: New tread construction and compound, delivers +10% longer wear life and higher heat resistance.

CATEGORY	SIZE	PLY/ STAR RATING	COMPOUND/ CONSTRUCTION	TRA/ APPLICATION	ARTICLE #	AVERAGE WEIGHT (LBS)	OTD (32nd)	OVERALL DIAMETER (IN)	OVERALL WIDTH (IN)
<b>SMALL TUBELESS</b>	26.5R25	2★ SUB	L2A	LHD-5S	012944	1,818	120	70.0	22.0
<b>LARGE TUBELESS</b>	29.5R29	2★ SUB	L2A	LHD-5S	012947	2,590	133	79.0	25.0

OD: Overall diameter, OW: Overall width, SLR: Static Loaded Radius, SLW: Static Loaded Width, OTD: Original Tread Depth

1. Compared load capacity to 2024 Bridgestone Databook (p.49) at 94 PSI / 650 kPa to Bridgestone VSMS 26.5R25 40,800 lbs (18,500 kgs) vs. the Bridgestone VMMS 26.5R25 46,700 lbs (21,200 kgs). Results may vary. Same comparison applies to 26.5R29 (page 51) and 35/65R33 (page 53) sizes.

2. Cut resistance data based on a comparison of Bridgestone VSMS vs. VMMS same size during testing. Results may vary depending on the usage, load, and surface conditions

3. Wear performance values are based on a comparison of the market evaluation of Bridgestone VSMS D2A 35/65R33 vs. Bridgestone VMMS L2A 35/65R33. Actual measurements may vary depending on size, patterns, specific usage, and surface conditions.



# VMDL

LHD-5 | RADIAL

## V-STEEL MINING D-LUG

- +15% Load Capacity: Advanced 2-star technology with strengthened bead structure and enhanced belt package. Provides +15% load capacity without increasing inflation pressure<sup>1</sup>.
- Engineered with subterranean technology to help provide longer wear and higher heat resistance.
- Special Sidewall Design: Provides extended protection from cutting.

CATEGORY	SIZE	PLY/ STAR RATING	COMPOUND/ CONSTRUCTION	TRA/ APPLICATION	ARTICLE #	AVERAGE WEIGHT (LBS)	OTD (32nd)	OVERALL DIAMETER (IN)	OVERALL WIDTH (IN)
<b>SMALL TUBELESS</b>	26.5R25	2★ SUB	L2A	LHD-5	12923	1,634	120	70.3	27
<b>LARGE TUBELESS</b>	29.5R29	2★ SUB	L2A	LHD-5	12946	2,213	132	79.0	30.3

1. Compared load capacity to 2024 Bridgestone Databook (p.49) at 94 PSI / 650 kPa to Bridgestone VSMS 26.5R25 40,800 lbs (18,500 kgs) vs. the Bridgestone VMDL 26.5R25 46,700 lbs (21,200 kgs). Results may vary. Same comparison applies to 26.5R29 size (page 51).



EARTHMOVER, LOADER, GRADER (BIAS)





# FG

L-2

BIAS

## FAST GRIP

- Separate Lugs Tread Pattern Design: Helps self-cleaning and greater traction
- Directional Long Service Tread
- Exceptional Flotation And Traction In Soft Soil, Heavy Dirt Or Mud

CATEGORY	SIZE	PLY/ STAR RATING	COMPOUND/ CONSTRUCTION	TRA/ APPLICATION	ARTICLE #	AVERAGE WEIGHT (LBS)	OTD (32nd)	OVERALL DIAMETER (IN)	OVERALL WIDTH (IN)
<b>SMALL TUBELESS</b>	12.5 / 70-16	8	-	L-2	298433	80	26	33.9	12.6
	15.5 / 60-18	8	-	L-2	290416	90	27	36.7	15.7
	10.00-20	16	-	L-2	211223	100	23	41.6	10.9
	11.00-20	16	-	L-2	153524	123	31	43.3	11.8



# RL

E-3

BIAS

## R-LUG

- Non-directional pattern for outstanding rough terrain traction
- Special compounds to resist cutting
- Exceptional cut resistance
- Designed for operating on rock, coal and earth surfaces

CATEGORY	SIZE	PLY/ STAR RATING	SPEC COMPOUND/ CONSTRUCTION	TRA/ APPLICATION	ARTICLE #	AVERAGE WEIGHT (LBS)	OTD (32nd)	OVERALL DIAMETER (IN)	OVERALL WIDTH (IN)
<b>SMALL TUBE TYPE</b>	12.00-20	18	SCR	E-3	285366	166	32	44.8	12.4
	14.00-24	28	E2A	E-3	296295	310	35	53.8	15.2

SCR: Steel Breaker Cut Resistant



## VL2

L-3

BIAS

### V-LUG 2

- Built with a specially compounded rubber to resist cutting and wearing, as well as overheating
- Designed for operating on rock, coal and earth surfaces
- Improved durability and low vibration

CATEGORY	SIZE	PLY/ STAR RATING	COMPOUND/ CONSTRUCTION	TRA/ APPLICATION	ARTICLE #	AVERAGE WEIGHT (LBS)	OTD (32nd)	OVERALL DIAMETER (IN)	OVERALL WIDTH (IN)
<b>SMALL TUBELESS</b>	17.5-25	16	D2A	L-3	3791	278	38	53.1	17.5
	20.5-25	16	D2A	L-3	3790	403	42	58.8	21.3
	23.5-25	20	D2A	L-3	5309	642	54	63.3	24.3



## RLS

E-4, L-4

BIAS

### R-LUG S

- Deep non-directional tread pattern
- Special compounds to resist heat and cutting
- Excellent self-cleaning tread design
- Designed for operating on rock, coal, and earth surfaces where serviceability and tread cutting are problematic

CATEGORY	SIZE	PLY/ STAR RATING	COMPOUND/ CONSTRUCTION	TRA/ APPLICATION	ARTICLE #	AVERAGE WEIGHT (LBS)	OTD (32nd)	OVERALL DIAMETER (IN)	OVERALL WIDTH (IN)
<b>SMALL TUBELESS</b>	26.5-25	26	D2A	L-4	3551	1,068	84	70.3	27.8
	29.5-25	28	D2A	L-4	275328	1,432	93	75.3	30.9
<b>LARGE TUBELESS</b>	24.00-35	42	E2A	E-4	276057	1,640	83	86.6	25.8



# D-LUG

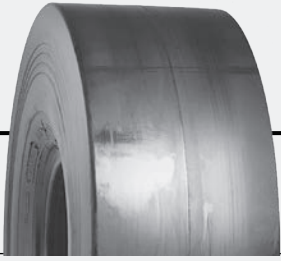
L-5

BIAS

## D-LUG

- Gear Lug And Extra Deep Tread Pattern & Rugged Casing: For rough terrain and exceptional cut and impact resistance
- Special Compounded Rubber & Shoulder Protection Ribs: Ensure maximum serviceability
- Rugged Casing & Rock Deflectors: Provides excellent traction and stability for or severe rocky surfaces

CATEGORY	SIZE	PLY/ STAR RATING	COMPOUND/ CONSTRUCTION	TRA/ APPLICATION	ARTICLE #	AVERAGE WEIGHT (LBS)	OTD (32nd)	OVERALL DIAMETER (IN)	OVERALL WIDTH (IN)
<b>SMALL TUBELESS</b>	17.5-25	16	D2A	L-5	261173	485	88	55.5	17.5
	26.5-25	20	D2A	L-5	275530	1,363	122	70.8	27.3
	29.5-25	28	D2A	L-5	423408	1,856	133	74.8	30.2
<b>LARGE TUBELESS</b>	35/65-33	42	D2V	L-5	422150	2,930	122	81.7	35.3
<b>GIANT TUBELESS</b>	45/65-33	58	D2V	L-5	419400	5,933	146	107.5	45.1
	50/65-51	62	D2A	L-5	429515	7,879	161	120.9	49.6
	50/65-51	62	D2V	L-5	417971	8,436	161	120.9	49.6



# STMS

L-5S

BIAS

## SMOOTH TREAD MS

- Exceptional cut and impact protection
- Smooth, extra-deep, and specially compounded rubber ensures maximum resistance to cutting and wearing
- Designed for severe rocky surfaces commonly found in open pits and quarries

CATEGORY	SIZE	PLY/ STAR RATING	COMPOUND/ CONSTRUCTION	TRA/ APPLICATION	ARTICLE #	AVERAGE WEIGHT (LBS)	OTD (32nd)	OVERALL DIAMETER (IN)	OVERALL WIDTH (IN)
<b>SMALL TUBE TYPE</b>	12.00-24	20	D2A	L-5S	295256	350	69	50.2	12.6
	14.00-24	20	D2A	L-5S	263303	534	98	54.1	14.4
<b>SMALL TUBELESS</b>	17.5-25	20	D2A	L-5S	261289	627	87	54.5	17.7
	18.00-25	32	D2A	L-5S	420972	1,092	106	65.9	20.5
	26.5-25	32	D2A	L-5S	275573	1,869	120	70.8	26.8
	26.5-25	36	D2A	L-5S	421863	1,904	120	70.8	26.8
<b>LARGE TUBELESS</b>	29.5-29	34	D2A	L-5S	419095	2,384	130	79.6	29.5
	35/65-33	42	D2V	L-5S	424874	3,298	122	81.7	35.3
<b>GIANT TUBELESS</b>	45/65-45	58	D2V	L-5S	422657	6,681	146	107.5	45.1



PORT

CONTAINER HANDLERS, CARRIERS & INDUSTRIAL



# VCH

IND-3

RADIAL

## V-STEEL CONTAINER HANDLER

- New tread compound provides extra long-life and smooth wear due to optimize contact pressure
- Heavy-duty radial construction for container-handler applications
- Strong resistance to puncture and sidewall damage
- Industrial application compound and construction

CATEGORY	SIZE	PLY/ STAR RATING	COMPOUND/ CONSTRUCTION	TRA/ APPLICATION	ARTICLE #	AVERAGE WEIGHT (LBS)	OTD (32nd)	OVERALL DIAMETER (IN)	OVERALL WIDTH (IN)
<b>SMALL TUBE TYPE</b>	12.00R20	3★	IDU	Industrial Service	190194	248	37	44.9	12.4
	12.00R24	2★	IDU	Industrial Service	190177	300	37	49.4	12.7
	14.00R24	3★	IDU	Industrial Service	293016	414	40	54.8	15.4

Important: Identify the proper wheel - rim application e.g. flat base vs. drop center

Article# 293016 is flat base



# VCHD

IND-4

RADIAL

## V-STEEL CONTAINER HANDLER DEEP

- Strong resistance to puncture and sidewall damage maximizing tire life
- Deep-tread heavy-duty radial construction for container handler applications such as straddle carriers, container stackers, etc.
- Features extra-long life thanks to a unique tread compound and smooth wear due to optimized contact pressure
- Industrial application compound and construction

CATEGORY	SIZE	LI / SS	COMPOUND/ CONSTRUCTION	TRA/ APPLICATION	ARTICLE #	AVERAGE WEIGHT (LBS)	OTD (32nd)	OVERALL DIAMETER (IN)	OVERALL WIDTH (IN)	MAX SPEED (MPH)
<b>SMALL TUBELESS</b>	16.00R25	200 A5	IDR	Industrial Service	422053	633	68	59.1	17.1	16



# VCHS

IND-4

RADIAL

## V-STEEL CONTAINER HANDLER S

- Deep-tread heavy-duty 3\* radial construction for container-handler applications
- Optimal design for sidewall stability
- Industrial application compound and construction
- All-steel radial casings improve operational stability and safety
- Unique pattern prevents irregular wear, extending tread life

CATEGORY	SIZE	LI / SS PLY/STAR RATING	COMPOUND/ CONSTRUCTION	TRA/ APPLICATION	ARTICLE #	AVERAGE WEIGHT □ (LBS)	OTD □ (32nd)	OVERALL DIAMETER □ (IN)	OVERALL WIDTH □ (IN)
<b>SMALL TUBE TYPE</b>	10.00R20	166 A5	IDR	Industrial Service	8703	222	47	41.9	10.3
	12.00R20	176 A5	IDR	Industrial Service	227397	308	52	44.8	11.7
	12.00R24	178 A5	IDR	Industrial Service	18999	335	53	49.7	12.2
	14.00R24 <sup>†</sup>	3*	IDU	Industrial Service	188205	520	79	55.6	15.1
<b>SMALL TUBELESS</b>	14.00R24 TG	3*	IDU	Industrial Service	7273	525	79	55.6	15.1
	18.00R25	3*	IDU	Industrial Service	423939	929	81	65.0	19.8
	18.00R33	3*	IDU	Industrial Service	424064	1,104	88	73.1	19.4

<sup>†</sup> VCHS 14.00R24 Art #188205 is a flat base rim  
TG = For use on semi drop center rim only; not for use on flat base rim



# VHB

IND-4

RADIAL

## V-STEEL H-BLOCK

- Designed for Industrial Services such as harbor cranes and automated guided vehicles
- Unique Tread Pattern that provided excellent flotation, traction and steering response
- Wear Resistant tread rubber compounds provides long tread life, high resistance to cutting and heat build-up

CATEGORY	SIZE	PLY /STAR RATING	COMPOUND/ CONSTRUCTION	TRA/ APPLICATION	ARTICLE #	AVERAGE WEIGHT (LBS)	OTD (32nd)	OVERALL DIAMETER (IN)	OVERALL WIDTH (IN)
<b>SMALL TUBELESS</b>	18.00R25	3*	IDU	Industrial Service	11847	600	33.0	63.4	20.3



## VRLS

IND-4

RADIAL

### V-STEEL R-LUG S

- Deep non-directional rock-service tread pattern
- Excellent haulage performance on rock, gravel or packed earth
- Rock-deep tread and sidewall protectors

CATEGORY	SIZE	PLY/ STAR RATING	COMPOUND/ CONSTRUCTION	TRA/ APPLICATION	ARTICLE #	AVERAGE WEIGHT (LBS)	OTD (32nd)	OVERALL DIAMETER (IN)	OVERALL WIDTH (IN)
<b>SMALL TUBELESS</b>	16.00R25	2★	IDU	Industrial Service	423203	613	57	60.3	17.6



## VCLG

NEW

IND-4S

RADIAL

### V-STEEL CONTAINER LIFTER G-SMOOTH

- 20% Longer Tire Life<sup>1</sup>: Engineered with deeper tread depth, providing extended tire life, enhanced productivity, and reduced operational costs
- +6% Load Capacity: Designed with 3-star rating casing structure provides 6% more load capacity and enhanced durability
- Heat Resistance: Engineered with heat resistance improved heat resistance from severe operations, resulting in more productivity

CATEGORY	SIZE	LI/SS	COMPOUND/ CONSTRUCTION	TRA/ APPLICATION	ARTICLE #	AVERAGE WEIGHT (LBS)	OTD (32nd)	OVERALL DIAMETER (IN)	OVERALL WIDTH (IN)
<b>SMALL TUBELESS</b>	18.00R25	3★	IDU	Industrial Service - 4S	14940	960	88	65.3	20.0

1. Comparison of the results of field tests conducted at the port site with tires Bridgestone VCHS 18.00R25 3-star vs. Bridgestone VCLG 18.00R25 3-star. Actual results may vary.



# VPCS

IND

RADIAL

## V-STEEL PORT CONTAINER STRADDLE

- Engineered with a new tread pattern and more durable casing structure, the Bridgestone VPCS delivers a 22% longer tire life<sup>1</sup>
- New high-strength casing design, delivers 7% higher load index than Michelin X-Straddle2<sup>2</sup>
- Cooling Running Tire Design delivers 40% higher max speed<sup>3</sup>

CATEGORY	SIZE	LI / SS	COMPOUND/ CONSTRUCTION	TRA/ APPLICATION	ARTICLE #	AVERAGE WEIGHT (LBS)	OTD (32nd)	OVERALL DIAMETER (IN)	OVERALL WIDTH (IN)
<b>SMALL TUBELESS</b>	450/95R25	204 A5	IDR	Industrial Service	014820	630	57	59.2	17.4
	480/95R25	208 A5	IDR	Industrial Service	014412	700	57	60.9	19.1

<sup>1</sup> Comparison based on the Bridgestone VPCS 450/95R25 tire vs. the Bridgestone VCHR 16.00R25 tire from field testing conducted at port sites. Results may vary depending on proper tire and vehicle maintenance, surface and road conditions, and driving habits.

<sup>2</sup> Comparison based on 15 mph (25 km/h) and ETRTO load Index information from 2023 Bridgestone Databook, Michelin X-Straddle2 Technical Brochure available on Michelin website. Bridgestone VPCS 450/95R25 LI/SS 204 A5 (35,275 lbs or 16,000 kg) vs. Michelin X-Straddle 2 450/95R25 LI/SS 202 A7 (33,075 lbs or 15,000 kg). Results may vary depending on proper tire and vehicle maintenance, road conditions, and driving habits.

<sup>3</sup> Comparison based on the Bridgestone VPCS 450/95R25 tire vs. the Bridgestone VCHR 16.00R25 tire from field testing conducted at port sites. Results may vary depending on proper tire and vehicle maintenance, surface and road conditions, and driving habits.

Important: The 40% of more speed at 22 mph applies (450/95R25) with the maximum load capacity at 32,630 lbs = 14,800 kgs. Based on 2023 Bridgestone Databook. Results may vary depending on proper tire and vehicle maintenance, road conditions, and driving habits.



# VSMS

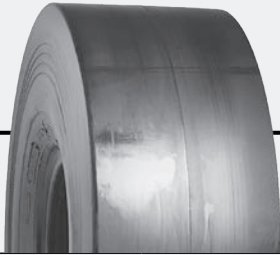
IND-5

RADIAL

## V-STEEL SMOOTH TREAD MINE SERVICE

- Maximum cut and wear resistance
- Extra-deep tread for severe conditions
- Extra-heavy-duty 2\* all-steel radial-casing design

CATEGORY	SIZE	PLY/ STAR RATING	COMPOUND/ CONSTRUCTION	TRA/ APPLICATION	ARTICLE #	AVERAGE WEIGHT (LBS)	OTD (32nd)	OVERALL DIAMETER (IN)	OVERALL WIDTH (IN)
<b>SMALL TUBELESS</b>	18.00R25	2*	IDU	Industrial Service	423785	1,100	106	66.2	20.2



# STMS

IND-5S

BIAS

## SMOOTH TREAD-MS

- Extra-deep tread for maximum life and exceptional cut resistance
- Designed for container-handler applications
- Smooth, extra-deep, and specially compounded rubber ensures maximum resistance to cutting, wearing, and heat

CATEGORY	SIZE	PLY/ STAR RATING	COMPOUND/ CONSTRUCTION	TRA/ APPLICATION	ARTICLE #	AVERAGE WEIGHT (LBS)	OTD (32nd)	OVERALL DIAMETER (IN)	OVERALL WIDTH (IN)
<b>SMALL TUBELESS</b>	18.00-25	40	IDU	Industrial Service	422231	1,083	106	65.9	20.5



# VSDL

IND-5

RADIAL

## V-STEEL D-LUG

- Extra-deep tread and shoulder protection offer cut and impact resistance, stability, and ride comfort
- Excellent traction in severe conditions
- Designed for extra-heavy-duty performance
- Specially designed sidewall provides extended protection from cutting
- Designed for severe or rocky surfaces and underground use

CATEGORY	SIZE	PLY/ STAR RATING	COMPOUND/ CONSTRUCTION	TRA/ APPLICATION	ARTICLE #	AVERAGE WEIGHT (LBS)	OTD (32nd)	OVERALL DIAMETER (IN)	OVERALL WIDTH (IN)
<b>LARGE TUBELESS</b>	35/65R33	2★	IDU	Industrial Service	429872	2,720	120	81.7	34.6



# RL

IND-3

BIAS

## R-LUG

- Non-directional pattern for outstanding rough terrain traction
- Special compounds to resist heat and cutting
- Exceptional cut resistance
- Designed for operating on rock, coal and earth surfaces

CATEGORY	SIZE	PLY/ STAR RATING	SPEC/ COMPOUND/ CONSTRUCTION	TRA/ APPLICATION	ARTICLE #	AVERAGE WEIGHT □ (LBS)	OTD □ (32nd)	OVERALL DIAMETER □ (IN)	OVERALL WIDTH □ (IN)
<b>SMALL TUBE TYPE</b>	12.00-20	20	IDU	Industrial Service	009612	418	30	44.88	12.4
	14.00-24	24	IDU	Industrial Service	15841	317	35	53.8	15.2
	14.00-24	28	IDU	Industrial Service	153532	300	35	53.8	15.2
<b>SMALL TUBELESS</b>	14.00-24 TG	24	IDU	Industrial Service	153818	333	35	53.5	15.6
	16.00-25	32	IDU	Industrial Service	15842	540	42	58.9	17.5
	21.00-25	40	IDU	Industrial Service	424789	1,015	52	68.9	22.4

TG: For use on semi drop center rim only; not use on flast base trim

□ Actual specifications may vary depending on the tire produced. Off-road tire limited warranty information is available from your Bridgestone representative or dealer.



## RLS

IND-4

BIAS

### R-LUG S

- Deep Non-Directional Tread Pattern: For outstanding wear resistance and tread life
- Special Compounds: To resist heat and cutting
- Designed For Operating On Rock, Coal & Earth Surfaces - Loaders & Earthmovers: Where serviceability and tread cutting are problems

CATEGORY	SIZE	PLY/ STAR RATING	COMPOUND/ CONSTRUCTION	TRA/ APPLICATION	ARTICLE #	AVERAGE WEIGHT (LBS)	OTD (32nd)	OVERALL DIAMETER (IN)	OVERALL WIDTH (IN)
<b>SMALL TUBELESS</b>	16.00-25	28	IDU	Industrial Service	15843	615	72	60.9	17.2
	16.00-25	32	IDU	Industrial Service	15844	615	72	60.9	17.2



## ELS2

IND-4

BIAS

### E-LUG S2

- Designed for container-handler applications
- Strong resistance to puncture and sidewall damage
- Industrial application compound and construction

CATEGORY	SIZE	PLY/ STAR RATING	COMPOUND/ CONSTRUCTION	TRA/ APPLICATION	ARTICLE #	AVERAGE WEIGHT (LBS)	OTD (32nd)	OVERALL DIAMETER (IN)	OVERALL WIDTH (IN)
<b>SMALL TUBELESS</b>	18.00-25	40	IDU	Industrial Service	422894	853	84	66.3	20.3
	18.00-33	36	IDU	Industrial Service	423645	973	84	73.9	20.3



# CRANE

MOBILE CRANE SERVICE (HIGH SPEED)



## VHS / VHS2

MOBILE CRANE SERVICE  
(HIGH SPEED)

RADIAL

### V-STEEL HIGH SPEED SERVICE

- Specially designed for high speed mobile crane service
- Non-directional tread pattern
- Smooth-wearing, low-noise, low-vibration tread pattern
- U.S. DOT approved for on-highway use

CATEGORY	SIZE	LI / SS	COMPOUND/ CONSTRUCTION	TRA/ APPLICATION	ARTICLE #	AVERAGE WEIGHT (LBS)	OTD (32nd)	OVERALL DIAMETER (IN)	OVERALL WIDTH (IN)	SPEED RATING (MPH)
<b>SMALL TUBE TYPE</b>	385/95R24	170 / E	N/A	Mobile Crane Service	421790	315	29	53.4	15.1	43
<b>SMALL TUBELESS</b>	385/95R25	170 / F	N/A	Mobile Crane Service	430824	320	29	53.4	15.1	50
	445/95R25	174 / F	N/A	Mobile Crane Service	430841	440	32	58.4	17.1	50
	445/95R25 †	174 / F	N/A	Mobile Crane Service	3619	440	32	58.4	17.3	50
	525/80R25	176 / F	N/A	Mobile Crane Service	5300	491	39	58.3	21.1	50

† =VHS2



## VGT

MOBILE CRANE SERVICE  
(HIGH SPEED)

RADIAL

### V-STEEL G-TRACTION

- Blocked Pattern With Normal-Depth Tread: For higher speeds and longer transport operations on paved or packed roads with strong resistance to heat
- On Rough Terrain, Provides Strong Traction And Flotation
- U.S. DOT Approved For On-Highway And High-Speed Use: Applicable to fire engines at airports or all-terrain cranes

CATEGORY	SIZE	LI / SS	COMPOUND/ CONSTRUCTION	TRA/ APPLICATION	ARTICLE #	AVERAGE WEIGHT (LBS)	OTD (32nd)	OVERALL DIAMETER (IN)	OVERALL WIDTH (IN)	SPEED RATING (MPH)
<b>SMALL TUBELESS</b>	24R21	1★	–	Firefighting	418951	436	31	54.3	23.7	55
	445/80R25	170 / E	–	Mobile Crane Service	419303	327	30	52.7	17.3	43



# VSW

MOBILE CRANE SERVICE  
(HIGH SPEED)

RADIAL

## V-STEEL SNOW WEDGE

- Excellent performance in packed snow or ice
- High-traction tread design for machines used in snow service
- Studs or chains not required
- Heat-resistant compounding for high-speed use

CATEGORY	SIZE	LI / SS	COMPOUND/ CONSTRUCTION	TRA/ APPLICATION	ARTICLE #	AVERAGE WEIGHT (LBS)	OTD (32nd)	OVERALL DIAMETER (IN)	OVERALL WIDTH (IN)	SPEED RATING (MPH)
<b>SMALL TUBELESS</b>	385/95R25	170 / E	-	Mobile Crane Service	425078	370	30	53.3	15.5	43

U.S. DOT approved for  
On-Highway use



**B** | OTHERS



# FG

L-2

BIAS

## FAST GRIP

- Self-cleaning tread design
- Directional long service tread
- Exceptional flotation and traction on soft soil or mud

CATEGORY	SIZE	PLY/ STAR RATING	SPEC/ CONSTRUCTION	TRA/ APPLICATION	ARTICLE #	AVERAGE WEIGHT (LBS)	OTD (32nd)	OVERALL DIAMETER (IN)	OVERALL WIDTH (IN)
<b>SMALL TUBELESS</b>	12.5 / 70-16	8	—	L-2	298433	80	26	33.9	12.6
	15.5 / 60-18	8	—	L-2	290416	90	27	36.7	15.4
	10.00-20	16	—	L-2	211223	100	23	41.6	10.9
	11.00-20	16	—	L-2	153524	123	31	43.3	11.8



# RR

C-1

BIAS

## ROAD ROLLER

- Smooth tread is specially designed for compacting road materials

CATEGORY	SIZE	PLY/ STAR RATING	COMPOUND/ CONSTRUCTION	TRA/ APPLICATION	ARTICLE #	AVERAGE WEIGHT (LBS)	OTD (32nd)	OVERALL DIAMETER (IN)	OVERALL WIDTH (IN)
<b>SMALL TUBELESS</b>	9.50-16	6	—	C-1	299944	69	—	32.0	9.0
<b>SMALL TUBE TYPE</b>	9.5 / 65-15	6	—	C-1	226751	51	—	26.4	9.4
	7.50-16	6	—	C-1	014271	65	—	30.6	8.7
	9.00-20	10	—	C-1	289450	113	—	39.6	10.4
	14 / 70-20	12	—	C-1	191112	155	—	38.4	15.0



## VSJ

E-7

RADIAL

### V-STEEL JAMAL

- Designed for fire/rescue and military trucks
- Unique tread design ensures maximum flotation and traction
- Designed for operating on desert or soft ground, as well as paved roads

CATEGORY	SIZE	PLY/ STAR RATING	COMPOUND/ CONSTRUCTION	TRA/ APPLICATION	ARTICLE #	AVERAGE WEIGHT (LBS)	OTD (32nd)	OVERALL DIAMETER (IN)	OVERALL WIDTH (IN)
<b>SMALL TUBELESS</b>	16.00R20	—	—	E-7	143829	357	23.3	51.8	16.3
	21.00R25	—	—	E-7	419362	741	28	68.0	23.2



## VSB

E7

RADIAL



### V-STEEL S-BLOCK

- Logging, multipurpose mining and heavy-axle applications
- Heavy-duty all-steel radial casing design
- Traction pattern for all road conditions and maneuverability
- Suitable for both gravel and hard-packed surfaces like paved roads
- Designed for heavy-duty trucks and trailers

CATEGORY	SIZE	PLY/ STAR RATING	COMPOUND/ CONSTRUCTION	TRA/ APPLICATION	ARTICLE #	AVERAGE WEIGHT (LBS)	OTD (32nd)	OVERALL DIAMETER (IN)	OVERALL WIDTH (IN)	SPEED RATING (MPH)
<b>SMALL TUBE TYPE</b>	14.00R24	3★	E2A	E-2	299367	356	27	53.7	15.4	
<b>SMALL TUBELESS</b>	14.00R25	L	—	LS-2 (DOT APPROVED)	3360	363	27	53.7	15.2	55

# MACHINE SUMMARY RADIAL, BIAS, SPECIALTY



	TRACTION	ROCK	ROCK DEEP	ROCK EXTRA DEEP	ROCK EXTRA DEEP SMOOTH	INDUSTRIAL & OTHER
	E-2, G-2, L-2	E-3, G-3, L-3	E-4, L-4, G-4	E-5, L-5	LS-5, LHD-5	
<b>DUMP TRUCK RIGID</b>		SRG	SRG DT			
<b>DUMP TRUCK ARTICULATED</b>	SGG	VersaBuilt AP	VersaBuilt DT			
<b>GRADER</b>	VersaBuilt AT SGG SGG RB		SRG DT RB			
<b>LOADER DOZER</b>	VersaBuilt AT SGG SGG LD SGG RB	VersaBuilt AP SRG SRG LD	VersaBuilt DT Duraload DT SRG DT LD SRG DT LD 2	Duraload SDT HTLD SDT LD	Duraload PT HTLD PTLD	
<b>SCRAPER</b>		SRG	SRG DT			
<b>UNDER-GROUND</b>					Duraload PT PTLD PTLD UMS	
<b>PORT (CONTAINER HANDLERS, CARRIERS &amp; INDUSTRIAL)</b>						SRG DT PT IDU PTLD IDU
<b>OTHER</b>						Duraforce AP Duraforce MH

## SPECIFICATION CODES



Each Firestone off-the-road tire has its own specification code that enables the customer to properly identify and match the right Firestone tire.

DESCRIPTION	
<b>STC</b>	Standard Compound / Construction
<b>CRC</b>	Cut-Resistant Compound/Construction (Type 2-A)
<b>NY</b>	Nylon
<b>NS</b>	Nylon Steel (Nylon Casing With Steel Breaker Belts)
<b>UMS</b>	Underground Mining Service
<b>IDU</b>	Industrial
<b>MH</b>	Material Handler
<b>N/A</b>	Not Applicable

# CONVERSION CHART (STAR RATING TO PLY RATING)



	TIRE SIZE	STAR RATING	CORRESPONDING PLY RATING
<b>GRADER</b>	14.00R24	1★	up to 16
	16.00R24	1★	up to 16
	17.5R25	1★	up to 16
<b>EARTHMOVER</b>	12.00R24	3★	up to 24
	14.00R24	3★	up to 32
	14.00R25	3★	up to 32
	16.00R25	2★	up to 36
	18.00R25	1★	up to 24
		2★	up to 36
	18.00R33	2★	up to 40
	21.00R33	2★	up to 36
	21.00R35	2★	up to 44
	24.00R35	2★	up to 48
	24.00R49	2★	up to 48
	27.00R49	2★	up to 54
	30.00R51	2★	up to 58
	33.00R51	2★	up to 64
	36.00R51	2★	up to 66
	40.00R57	2★	up to 74
	17.5R25	1★	up to 16
	20.5R25	1★	up to 24
		2★	up to 28
	25/65R25	2★	up to 32
	23.5R25	1★	up to 24
		2★	up to 32
	26.5R25	2★	up to 32
	29.5R25	2★	up to 34
	29.5R29	2★	up to 40
	33.25R29	2★	up to 44
	33.5R33	2★	up to 44
	37.5R33	2★	up to 48
	33.25R35	2★	up to 44
	37.25R35	2★	up to 48
	37.5R39	2★	up to 52
	40.5/75R39	2★	up to 54
	<b>LOADER</b>	15.5R25	1★
17.5R25		1★	up to 16
20.5R25		1★	up to 24
		2★	up to 28
23.5R25		1★	up to 24
		2★	up to 32
26.5R25		1★	up to 24
		2★	up to 36
29.5R25		1★	up to 28
		2★	up to 34
29.5R29		1★	up to 34
35/65R33		1★	up to 36
35/65R33		2★	up to 42
45/65R45		1★	up to 50
45/65R45		2★	up to 58



# EARTHMOVER, LOADER, GRADER (RADIAL)





## VERSABUILT AT

G-2, L-2

RADIAL

### VERSABUILT ALL TRACTION

- Provides serious traction and dependable performance
- Self-cleaning tread pattern to provide traction on multiple surfaces
- Tough, proprietary compound for long wear life and cut resistance
- Built with steel casings and sidewall SideArmor to protect against cuts and punctures by deflecting stones and debris

CATEGORY	SIZE	PLY/STAR RATING	COMPOUND/ CONSTRUCTION	TRA/ APPLICATION	ARTICLE #	AVERAGE WEIGHT (LBS)	OTD (32nd)	OVERALL DIAMETER (IN)	OVERALL WIDTH (IN)
SMALL TUBELESS	14.00R24	1★	G2A	G-2	5639	264	34	53.4	15.7
	17.5R25	1★	CRC	G-2/L-2	5507	286	35	52.8	17.4
	20.5R25	1★	CRC	G-2/L-2	5508	377	40	58.1	21.0
	23.5R25	1★	CRC	G-2/L-2	5509	653	44	63.0	24.1



## VERSABUILT AP

E-3, L-3

RADIAL

### VERSABUILT ALL PURPOSE

- Designed for traction and dependable performance across a variety of surfaces
- Tough, proprietary compound for long wear life and cut resistance
- Built with steel casings and sidewall SideArmor to protect against cuts and punctures by deflecting stones and debris

CATEGORY	SIZE	PLY/STAR RATING	COMPOUND/ CONSTRUCTION	TRA/ APPLICATION	ARTICLE #	AVERAGE WEIGHT (LBS)	OTD (32nd)	OVERALL DIAMETER (IN)	OVERALL WIDTH (IN)
SMALL TUBELESS	17.5R25	MS	CRC	E-3/L-3	5498	314	32	52.9	17.2
	20.5R25	MS	CRC	E-3/L-3	5499	473	37	58.4	20.8
	23.5R25	MS	CRC	E-3/L-3	5501	654	42	63.1	24.3
	26.5R25	MS	CRC	E-3/L-3	5502	909	44	68.2	27.0
	29.5R25	MS	CRC	E-3/L-3	5503	1,116	48	73.1	30.4



# VERSABUILT DT

E-4, L-4

RADIAL

## VERSABUILT DEEP TREAD

- Deep tread pattern designed to provide long wear life and dependability
- Self-cleaning tread pattern provides solid traction, especially well suited for dump trucks
- Tough, proprietary compound promotes long wear life and provides increased resistance to punctures and cuts
- Built with steel casings and sidewall SideArmor to protect against cuts and punctures by deflecting stones and debris

CATEGORY	SIZE	PLY/STAR RATING	COMPOUND/ CONSTRUCTION	TRA/ APPLICATION	ARTICLE #	AVERAGE WEIGHT (LBS)	OTD (32nd)	OVERALL DIAMETER (IN)	OVERALL WIDTH (IN)
SMALL TUBELESS	23.5R25	MS	CRC	E-4/L-4	5504	776	79	65.3	24.1
	26.5R25	MS	CRC	E-4/L-4	5505	965	69	69.6	27.0
	29.5R25	MS	CRC	E-4/L-4	5506	1,222	76	74.5	30.4



EARTHMOVER, LOADER, GRADER (BIAS)





## SGG

E-2, G-2, L-2

BIAS

### SUPER GROUND GRIP

- Directional tread pattern
- Self-cleaning tread design
- Exceptional flotation and traction in soft soil or mud

CATEGORY	SIZE	PLY/STAR RATING	COMPOUND/ CONSTRUCTION	TRA/ APPLICATION	ARTICLE #	AVERAGE WEIGHT (LBS)	OTD (32nd)	OVERALL DIAMETER (IN)	OVERALL WIDTH (IN)
SMALL TUBELESS	13.00-24	12	MH	G-2/L-2	429209	151	29	50.3	14.5
	20.5-25	16	STC NY	E-2/L-2	408492	339	35	58.5	21.0
	23.5-25	20	STC NY	E-2/L-2	404969	499	39	63.4	24.1
	29.5-25	22	STC NY	E-2/L-2	404810	875	47	74.3	30.3



## SGG RB

L-2, G-2

BIAS

### SUPER GROUND GRIP ROAD BUILDER

- Directional tread pattern
- Self-cleaning tread design
- Exceptional flotation and traction in soft soil or mud

CATEGORY	SIZE	PLY/STAR RATING	COMPOUND/ CONSTRUCTION	TRA/ APPLICATION	ARTICLE #	AVERAGE WEIGHT (LBS)	OTD (32nd)	OVERALL DIAMETER (IN)	OVERALL WIDTH (IN)
SMALL TUBELESS	13.00-24 TG	16	STC	G-2	425163	174	29	50.3	14.5
	14.00-24 TG	12	STC	G-2/L-2	425214	184	31	53.2	16.0
	14.00-24 TG	16	STC	G-2	425384	206	31	53.2	16.0
	16.00-24 TG	16	STC	G-2	426166	316	31	57.4	17.7

TG = For use on semi drop center rim only; not for use on flat base rim



# SGG LD

L-2

BIAS

## SUPER GROUND GRIP LOADER DOZER

- Directional tread pattern
- Self-cleaning tread design
- Exceptional flotation and traction in soft soil or mud

CATEGORY	SIZE	PLY/STAR RATING	COMPOUND/ CONSTRUCTION	TRA/ APPLICATION	ARTICLE #	AVERAGE WEIGHT (LBS)	OTD (32nd)	OVERALL DIAMETER (IN)	OVERALL WIDTH (IN)
SMALL TUBELESS	15.5-25	12	STC	L-2	425248	184	29	50.0	15.8
	17.5-25	12	STC	L-2	425129	222	31	53.6	18.0
	17.5-25	16	STC	L-2	425180	245	31	53.6	18.0
	17.5-25	20	STC	L-2	429243	275	31	53.6	18.0



# SRG

E-3, L-3

BIAS

## SUPER ROCK GRIP

- Nondirectional rock tread pattern for excellent traction and flotation
- Extra-tough tread compound for cut and impact protection
- Wide base sizes offer wide cross section and tread

CATEGORY	SIZE	PLY/STAR RATING	COMPOUND/ CONSTRUCTION	TRA/ APPLICATION	ARTICLE #	AVERAGE WEIGHT (LBS)	OTD (32nd)	OVERALL DIAMETER (IN)	OVERALL WIDTH (IN)
SMALL TUBELESS	16.00-25	28	STC	E-3	413518	460	36	58.8	17.2
	20.5-25	20	STC NY	E-3/L-3	414646	366	35	59.0	21.1
	23.5-25	20	STC NY	E-3/L-3	400610	551	39	63.9	24.2
	26.5-25	20	STC NY	E-3/L-3	400629	756	44	69.2	26.6
	26.5-25	26	STC	E-3/L-3	401757	796	44	69.2	26.6
	29.5-25	28	STC NY	E-3/L-3	414638	1,056	48	74.0	30.8
LARGE TUBELESS	29.5-29	34	STC	E-3	401625	1,221	48	78.0	30.8
	33.25-29	32	STC	E-3	280138	1,610	57	82.3	33.9
	29.5-35	34	STC	E-3	401668	1,319	48	83.4	30.5
	33.25-35	38	STC	E-3	410241	1,870	53	89.7	33.7
	37.25-35 +	36	STC	E-3	413461	2,241	62	94.7	37.9
	37.5-39 +	52	STC	E-3	412546	2,781	60	99.5	38.0
	18.00-49	32	STC	E-3	401560	1,099	34	87.0	19.4
	30-56.5	48	STC	E-3	413127	2,441	53	103.4	28.5

+ = Similar to marked photo



# SRG LD

L-3

BIAS

## SUPER ROCK GRIP LOADER DOZER

- Non-directional rock tread pattern for excellent traction and flotation
- Extra-tough tread compound for cut and impact protection
- Wide base sizes offer wide cross section and tread

CATEGORY	SIZE	PLY/STAR RATING	COMPOUND/ CONSTRUCTION	TRA/ APPLICATION	ARTICLE #	AVERAGE WEIGHT (LBS)	OTD (32nd)	OVERALL DIAMETER (IN)	OVERALL WIDTH (IN)
<b>SMALL TUBELESS</b>	17.5-25	12	CRC NY	L-3	425537	221	32	53.4	18.0
	17.5-25	16	STC NY	L-3	425554	242	32	53.4	18.0
	17.5-25	20	STC NY	L-3	425571	327	32	53.4	18.0
<b>LARGE TUBELESS</b>	29.5-29	40	STC NY	L-3	416916	1,379	48	78.0	30.8



# SRG DT

E-4

BIAS

**SUPER ROCK  
GRIP  
DEEP TREAD**

- Extra-heavy-duty non-directional design
- Exceptional traction
- Extra-deep tread design provides excellent resistance to impacts and cuts

CATEGORY	SIZE	PLY/STAR RATING	COMPOUND/ CONSTRUCTION	TRA/ APPLICATION	ARTICLE #	AVERAGE WEIGHT (LBS)	OTD (32nd)	OVERALL DIAMETER (IN)	OVERALL WIDTH (IN)
<b>SMALL TUBELESS</b>	16.00-25	28	STC NY	E-4	423149	555	62	60.2	17.2
	18.00-25	32	STC NY	E-4	403172	733	69	64.5	20.0
	18.00-33	32	CRC	E-4	414972	901	69	72.9	20.3
<b>LARGE TUBELESS</b>	21.00-35	36	CRC	E-4	414131	1,268	67	80.1	22.9
	33.25-35	38	STC NY	E-4	413380	2,145	86	89.2	34.0
	27.00-49	48	STC NY	E-4	411663	2,739	79	105.5	29.6
	30.00-51	52	STC NY	E-4	416711	3,594	87	113.0	33.2
<b>GIANT TUBELESS</b>	33.00-51	58	STC NY	E-4	415677	4,565	93	118.3	36.0
	36.00-51	58	STC NY	E-4	414832	5,374	104	126.5	39.3
	40.00-57	76	STC NY	E-4	424773	7,735	126	142.8	43.5



## DURALOAD DT

L-4

BIAS

### DURALOAD DEEP TREAD

- Unique sidewall rib protection reduces cuts and sidewall damage
- New tread design for optimal traction and wear life
- Shoulder tie bars for added resistance to groove cracking, lug tearing and belt-edge separations
- Larger footprint with more even footprint pressure

CATEGORY	SIZE	PLY/STAR RATING	COMPOUND/ CONSTRUCTION	TRA/ APPLICATION	ARTICLE #	AVERAGE WEIGHT (LBS)	OTD (32nd)	OVERALL DIAMETER (IN)	OVERALL WIDTH (IN)
GIANT TUBELESS	45/65-45	58	STC NY	L-4	431691	5,081	76	109.3	45.6
	45/65-45	58	STC NS	L-4	431708	5,387	76	109.3	45.6



## SRG DT LD

L-4

BIAS

Image applies for sizes 23.5-25 to 29.5-25    Image applies for size 50/80 -57

### SUPER ROCK GRIP DEEP TREAD LOADER DOZER

- Extra-heavy-duty non-directional rock-service design
- Exceptional off-road traction
- Excellent tread-cleaning design

CATEGORY	SIZE	PLY/STAR RATING	COMPOUND/ CONSTRUCTION	TRA/ APPLICATION	ARTICLE #	AVERAGE WEIGHT (LBS)	OTD (32nd)	OVERALL DIAMETER (IN)	OVERALL WIDTH (IN)
SMALL TUBELESS	23.5-25	24	STC NY	L-4	417459	743	67	65.88	23.8
	26.5-25	26	STC NY	L-4	416401	1,023	67	69.2	26.6
	29.5-25	28	STC NY	L-4	416924	1,341	77	75.6	29.5
GIANT TUBELESS	50/80-57	68	STC NY	L-4	421456	9,470	126	142.9	51.1



# SRG DT LD 2

L-4

BIAS

## SUPER ROCK GRIP DEEP TREAD LOADER DOZER 2

- +31% Longer Tire Life<sup>1</sup>: Extra heavy duty non-directional tread design and new tire construction resulting in more tire life
- 90% Reduce Trimming Time (Long Distance): Engineered with new compounds, resulting in better heat resistance for improved trimming conditions<sup>2</sup>
- More Durability and Improved Cut Resistance<sup>1</sup>
- Designed to help provide better stability for more productivity and operator ride comfort

CATEGORY	SIZE	PLY/STAR RATING	COMPOUND/ CONSTRUCTION	TRA/ APPLICATION	ARTICLE #	AVERAGE WEIGHT (LBS)	OTD (32nd)	OVERALL DIAMETER (IN)	OVERALL WIDTH (IN)
GIANT TUBELESS	58/85-57	84	STC	L-4	15762	12,890	116	154.0	56.3
	70/70-57	84	STC	L-4	15761	14,870	116	157.2	67.0

1. Performance comparison based on Firestone 70/70-57 SRG DT LD (previous specifications) at major iron mine in Brazil on # hours operating on average. Actual results may vary by site.

2. Data based on tech bulletin BATO-OTR-TB-005-231002 Released on October 2023, data captured by ATC on Firestone 70/70-57 SRG DT LD 2 loader running at 7.5MPH for 40 minutes then 2MPH for 290 Minutes, vs previous Firestone 70/70-57 generation running 5 Miles maximum per day Technical bulletin BATO-OTR-TB-002-160719.



## SRG DT RB

G-4

BIAS

**SUPER ROCK  
GRIP  
DEEP TREAD  
ROAD BUILDER**

- Extra-heavy-duty non-directional rock-service tread pattern
- Exceptional off-road traction and long wear
- Superior tread-cleaning design

CATEGORY	SIZE	PLY/STAR RATING	COMPOUND/ CONSTRUCTION	TRA/ APPLICATION	ARTICLE #	AVERAGE WEIGHT (LBS)	OTD (32nd)	OVERALL DIAMETER (IN)	OVERALL WIDTH (IN)
<b>SMALL TUBELESS</b>	14.00-24 TG	12	STC	G-4	425656	298	58	54.7	15.2

TG = For use on semi drop center rim only; not for use on flat base rim



## DURALOAD SDT

L-5

BIAS

**DURALOAD  
SUPER DEEP  
TREAD**

- Unique sidewall rib protection reduces cuts and sidewall damage
- Tread designed for optimal traction and wear life
- Shoulder tie bars for added resistance to groove cracking, lug tearing and belt-edge separations

CATEGORY	SIZE	PLY/STAR RATING	COMPOUND/ CONSTRUCTION	TRA/ APPLICATION	ARTICLE #	AVERAGE WEIGHT (LBS)	OTD (32nd)	OVERALL DIAMETER (IN)	OVERALL WIDTH (IN)
<b>LARGE TUBELESS</b>	35/65-33	42	STC NY	L-5	000991	2,907	116	81.9	36.3
	35/65-33	42	STC NS	L-5	431657	3,116	116	81.9	36.3
<b>GIANT TUBELESS</b>	45/65-45	58	STC NY	L-5	431674	5,770	130	109.0	45.6
	45/65-45	58	STC NS	L-5	431606	6,223	130	109.0	45.6



# SDT LD

L-5

BIAS

## SUPER DEEP TREAD LOADER DOZER

- Super-heavy-duty non-directional rock-service tread design
- Some sizes available in Steel Shield construction for additional cut and impact protection
- Extra tread depth is 250% deeper than the Firestone SRG LD

CATEGORY	SIZE	PLY/STAR RATING	COMPOUND/ CONSTRUCTION	TRA/ APPLICATION	ARTICLE #	AVERAGE WEIGHT (LBS)	OTD (32nd)	OVERALL DIAMETER (IN)	OVERALL WIDTH (IN)
<b>SMALL TUBELESS</b>	20.5-25	20	STC NY	L-5	417610	634	88	60.9	20.7
	23.5-25	20	STC NY	L-5	403970	836	98	65.9	24.4
	26.5-25	26	STC NY	L-5	416428	1,165	108	71.1	27.0
	29.5-25	28	STC NY	L-5	416436	1,530	120	74.9	29.9
<b>LARGE TUBELESS</b>	41.25/70-39	42	STC NY	L-5	417033	4,134	146	98.7	40.9
	41.25/70-39	42	STC NS	L-5	416789	4,523	146	98.7	40.9
	65/40-39	36	STC NY	L-5	280159	3,343	134	94.9	38.6
<b>GIANT TUBELESS</b>	53.5/85-57	76	STC NY	L-5	420468	11,629	153	151.9	53.9



## DURALOAD PT

L-5S

BIAS

### DURALOAD PLAIN TREAD

- Optimized casing design for longer life and durability
- Flat tread provides even footprint pressure for longer life
- Unique sidewall rib protection reduces cuts and sidewall damage

CATEGORY	SIZE	PLY/STAR RATING	COMPOUND/ CONSTRUCTION	TRA/ APPLICATION	ARTICLE #	AVERAGE WEIGHT (LBS)	OTD (32nd)	OVERALL DIAMETER (IN)	OVERALL WIDTH (IN)
<b>LARGE TUBELESS</b>	35/65-33	42	STC NY	L-5S	000992	3,194	116	81.9	36.3
<b>GIANT TUBELESS</b>	45/65-45	58	STC NY	L-5S	000468	6,228	133	109.0	45.6



## HTLD

L-5, L-5S

BIAS

### HALF TREAD LOADER DOZER

- Super-heavy half-tread design
- Special cut and impact resistance with outside shoulder protector
- Half-deep lug-tread design for excellent traction

CATEGORY	SIZE	PLY/STAR RATING	COMPOUND/ CONSTRUCTION	TRA/ APPLICATION	ARTICLE #	AVERAGE WEIGHT (LBS)	OTD (32nd)	OVERALL DIAMETER (IN)	OVERALL WIDTH (IN)
<b>LARGE TUBELESS</b>	65/35-33	42	STC NS	L-5/L-5S	430246	2,866	120	82.8	33.8
<b>GIANT TUBELESS</b>	65/45-45	50	STC NY	L-5/L-5S	280255	5,366	150	108.1	43.1



## PTLD

L-5S

BIAS

### PLAIN TREAD LOADER DOZER

- Super-heavy-duty plain tread design for extreme service applications
- Some sizes available in Steel Shield construction for additional cut and impact protection

CATEGORY	SIZE	PLY/STAR RATING	COMPOUND/ CONSTRUCTION	TRA/ APPLICATION	ARTICLE #	AVERAGE WEIGHT (LBS)	OTD (32nd)	OVERALL DIAMETER (IN)	OVERALL WIDTH (IN)
<b>SMALL TUBELESS</b>	26.5-25	26	STC NY	L-5S	417335	1,665	108	71.1	27.0
	29.5-25	34	STC NY	L-5S	417408	1,861	120	75.6	29.5
<b>LARGE TUBELESS</b>	65/35-33	42	STC NS	L-5S	427917	2,956	120	82.8	33.8
	45/65-39	46	STC NS	L-5S	423173	5,361	147	103.5	38.6



## PTLD UMS

L-5S

BIAS

### PLAIN TREAD LOADER DOZER UNDERGROUND MINING SERVICE

- Super-heavy-duty plain tread design for extreme underground service applications
- Special compounding provides excellent tread life
- Exceptional cut and impact protection

CATEGORY	SIZE	PLY/STAR RATING	COMPOUND/ CONSTRUCTION	TRA/ APPLICATION	ARTICLE #	AVERAGE WEIGHT (LBS)	OTD (32nd)	OVERALL DIAMETER (IN)	OVERALL WIDTH (IN)
<b>SMALL TUBELESS</b>	26.5-25	32	UMS	L-5S	416568	1,763	108	71.1	27.0
<b>LARGE TUBELESS</b>	29.5-29	34	UMS CRC	L-5S	431776	2,098	120	80.1	30.5



PORT

CONTAINER HANDLERS, CARRIERS & INDUSTRIAL





# PTLD IDU

IND-3S

BIAS

## PLAIN TREAD LOADER DOZER

- Super-heavy-duty plain-tread design for extreme service applications
- Extra-tough plain-tread design

CATEGORY	SIZE	PLY/STAR RATING	COMPOUND/ CONSTRUCTION	TRA/ APPLICATION	ARTICLE #	AVERAGE WEIGHT (LBS)	OTD (32nd)	OVERALL DIAMETER (IN)	OVERALL WIDTH (IN)
<b>LARGE TUBELESS</b>	33.25-35	50	IDU	Industrial Service	003565	2,565	53	89.6	34.1



# PT IDU

IND-4S

BIAS

## PLAIN TREAD

- Super-heavy-duty plain-tread design for extreme service applications

CATEGORY	SIZE	PLY/STAR RATING	COMPOUND/ CONSTRUCTION	TRA/ APPLICATION	ARTICLE #	AVERAGE WEIGHT (LBS)	OTD (32nd)	OVERALL DIAMETER (IN)	OVERALL WIDTH (IN)
<b>SMALL TUBELESS</b>	18.00-25	40	IDU	Industrial Service	5524	1,036	69	66.1	20.9



# SRG DT

IND-4

BIAS

## SUPER ROCK GRIP DEEP TREAD

- Extra-heavy-duty non-directional design
- Exceptional traction
- Extra-deep tread design provides excellent resistance to impacts and cuts

CATEGORY	SIZE	PLY/STAR RATING	COMPOUND/ CONSTRUCTION	TRA/ APPLICATION	ARTICLE #	AVERAGE WEIGHT (LBS)	OTD (32nd)	OVERALL DIAMETER (IN)	OVERALL WIDTH (IN)
<b>SMALL TUBELESS</b>	18.00-25	40	IDU	Industrial Service	426064	839	69	64.5	20.0
<b>LARGE TUBELESS</b>	18.00-33	44	IDU	Industrial Service	421308	1,029	69	72.9	20.3
	21.00-35 +	40	IDU	Industrial Service	411604	1,299	67	80.1	22.9
	33.25-35 +	50	IDU	Industrial Service	280004	2,429	86	89.2	34.0

+ = Container Handler use only



OTHERS



## DURAFORCE MH

L-3

BIAS

### DURAFORCE MATERIAL HAN- DLER

- Extra-deep tread for long-lasting wear
- New tread design reduces ground compaction and surface pressure on hard surfaces
- Protective shoulder rib and low-profile vertical sidewall reduces sidewall damage
- Unique non-directional tread pattern provides excellent traction and long wear

CATEGORY	SIZE	PLY/STAR RATING	COMPOUND/ CONSTRUCTION	TRA/ APPLICATION	ARTICLE #	AVERAGE WEIGHT (LBS)	OTD (32nd)	OVERALL DIAMETER (IN)	OVERALL WIDTH (IN)
LARGE TUBELESS	370/75-28 +	14	MH	L-3	429770	217	42	50.3	14.5
	400/75-28 +	16	MH	L-3	431453	236	42	52.3	15.7

+ = For use on GR OTR wheel only



## DURAFORCE AP

E-7

BIAS

### DURAFORCE ASPHALT PAVER

- Notched rib pattern provides traction performance on unimproved surfaces, including grass, dirt and gravel
- Outside diameter ideal for restrictive asphalt paver wheel wells
- Shallow E-7 tread depth helps manage heat from hot paving for longer service

CATEGORY	SIZE	PLY/STAR RATING	COMPOUND/ CONSTRUCTION	TRA/ APPLICATION	ARTICLE #	AVERAGE WEIGHT (LBS)	OTD (32nd)	OVERALL DIAMETER (IN)	OVERALL WIDTH (IN)
SMALL TUBELESS	18.00-25	16	NY	E-7	1277	318	16	59.9	18.8



Bridgestone Americas Tire Operations, LLC

## Off-the-road Tire Limited Warranty – EFFECTIVE: JAN. 1, 2012

### LIMITED WARRANTY

The following warranty contains certain rights and obligations that pertain to Bridgestone and Firestone branded off-the-road (OTR) tires. Please review these rights and obligations carefully.

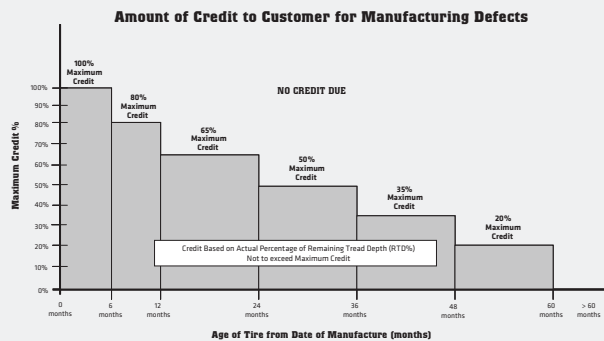
### DEFINITION

This Limited Warranty covers all Bridgestone- and Firestone-branded OTR tires as designated in Bridgestone and Firestone OTR product listings (price books and catalogs). It does not include, among others, agricultural tires, aircraft, light construction tires or tires marked "NA" (not adjustable).

### ELIGIBILITY

Every OTR tire bearing the name Bridgestone or Firestone and with a complete serial number molded in the sidewall is warranted to be free from manufacturing defects within the manufacturer's control. If an examination by an authorized Bridgestone or Firestone OTR representative shows that any such tire failed as a result of manufacturing defects, it will, at the option of Bridgestone Americas Tire Operations (BATO), either be repaired at no charge, or a credit will be issued toward the purchase price of a replacement tire, being a comparable Bridgestone or Firestone OTR product. This credit will be determined by applying the lesser of the percentage of remaining tread depth (RTD%) and the maximum age-based credit shown in the following chart.

The replacement percentage will be multiplied by the original purchase price of the



tire (excluding federal excise tax) to determine the amount of credit to be applied. Such credit must be applied toward the purchase price of the replacement tire in effect at the time of adjustment.

All adjusted tires will be disabled and the serial numbers will be removed. Customer is responsible for the disposal of all adjusted tires.

This warranty coverage is for OTR tires used within published designed specifications for Bridgestone and Firestone tires. Any use outside such specifications automatically voids this warranty. Please consult Bridgestone or Firestone data books, maintenance manuals, etc., for design specifications. This warranty does not apply to used or "NA" (not adjustable) tires.

### TIME PERIOD

This warranty applies to Bridgestone and Firestone brand OTR tires for a maximum period of five years (60 months) from date of manufacture. The date of manufacture can be determined by the second and third digits in the serial number code. For non-serial controlled tires, the date of manufacture can be determined from the production lot code.

### LIMITATIONS

This Limited Warranty is applicable to the original purchaser and is not assignable to subsequent purchasers.

No Bridgestone or Firestone dealer, agent, or representative has the authority to make or imply any representation, promise, or agreement that in any way varies or extends the terms of this warranty.

Any tire, no matter how well manufactured, may fail in service or become unserviceable due to conditions beyond the control of the manufacturer.

This Limited Warranty is under no circumstances a representation that a tire failure cannot occur.

This Limited Warranty gives you specific rights and you may also have other rights that may vary from jurisdiction to jurisdiction. To the extent that the provisions

of any applicable legislation expressly replace, eliminate, amend, or prohibit any term or terms contained herein, such term or terms shall be accordingly replaced, eliminated, amended, or extended, as the case may be, in accordance with such legislation.

### LIMITED WARRANTY EXCLUSIONS – ALL OTR TIRES AND TUBES

All OTR tire and tube warranties are subject to the following exclusions:

1. Tires purchased more than 60 months from the date of manufacture.
2. Tires for which alternative warranties or guarantees have been negotiated.
3. Tires used under chains. BATO does recognize that in many applications tire chains provide enhanced tire protection and may extended tire life. In these cases, BATO may extend special negotiated warranties. Please consult your BATO Off-the-road Tire Division representative for details.
4. Damage resulting from misuse, improper mounting, misapplication, use of non-approved rims, improper inflation, overloading, running flat, misalignment or imbalance of wheels/rims, defective brakes or shock absorbers, abuse, willful damage, oil, chemical action, fire or other externally generated heat, use of studs, water or other material entrapped inside the tire, vehicle damage, or road hazards (such as rock cuts, punctures, cut separations, impacts, flex breaks).
5. Claims for irregular wear or rapid tread wearout are not covered by this Limited Warranty.
6. Any tire that is operated above its ton-mile-per-hour (TMPH) or tonne-kilometer-per hour (TKPH) rating.
7. Tires mounted with nonapproved tubes or o-rings.
8. Used, repaired, or retread tires.
9. Any modifications to the tire (added buttress shoulders, regrooving, relugging, etc.) void all warranties.
10. Any material added to the tire (tire fill, sealer, balancer, etc.) is not covered by this limited warranty and will not be compensated for in case of credit being issued for the tire.
11. Use of a solid type fill (such as urethane) voids all warranties.
12. Any costs associated with the repair of tires are not covered unless previously approved by BATO.
13. Costs of mounting and balancing following prorated replacement or repair of tires or tubes, and applicable federal, state, provincial, and local taxes, are not covered under this warranty.
14. Cost of disposal of warranted tires. Disposal of tires is the sole responsibility of the customer.
15. ALL OTHER WARRANTIES, INCLUDING THE IMPLIED WARRANTIES OF MERCHANTABILITY AND FITNESS FOR A PARTICULAR PURPOSE, ARE EXPRESSLY DISCLAIMED TO THE EXTENT PERMITTED BY LAW.
16. Some jurisdictions do not allow limitations in how long an implied warranty lasts, or the exclusion or limitation of incidental or consequential damages, so the above limitations or exclusions may not apply to you.
17. ALL OBLIGATIONS OR LIABILITIES FOR INDIRECT, INCIDENTAL, PUNITIVE OR CONSEQUENTIAL DAMAGE ARE HEREBY EXCLUDED TO THE EXTENT PERMITTED BY LAW, INCLUDING ECONOMIC LOSS, LOSS OF PROFIT, LOSS OF USE OF VEHICLE, LOSS OF TIME, PERSONAL INJURY OR DEATH.

### TO OBTAIN WARRANTY SERVICE

1. Contact an authorized Bridgestone or Firestone OTR dealer or representative. Please be prepared to provide proof of purchase of the product and purchase date.
2. The authorized dealer or representative will contact Bridgestone Americas to arrange the inspection of the tire in question and processing of your claim. The dealer has no authority or responsibility to make the determination as to eligibility for coverage under this warranty.



Bridgestone Americas Tire Operations, LLC

## Covered Radial Construction Tires

### LIMITED WARRANTY

This Limited Warranty covers new original-tread Firestone brand construction tires (R-4, F-3, I-3, NHS) purchased or manufactured after January 1, 2009, used in normal construction service. It does not cover tires marked "NO ADJ" or "NA" (nonadjustable) or tires not containing the Firestone serial number. Tires branded DT (damaged tire) are not adjustable for appearance. NOTE: For radial tires, please refer to the Firestone Radial Warranty for adjustment warranty information.

### WHAT IS WARRANTED

Subject to the terms and conditions of this Limited Warranty, any covered tire that becomes unusable for any reason within the manufacturer's control, before wearing down to 2/32" of the original tread or bar depth remaining, shall be replaced with an equivalent new Firestone construction tire on a pro rata basis.

This Limited Warranty is in addition to, and/or may be limited by, any other applicable written warranty you may have received concerning special tires or situations.

### WHAT IS NOT WARRANTED

Unusable tires caused by:

1. Field or road hazards (e.g., cut, snag, puncture, stubble damage, impact break, tear or chunk in tread, bar or shoulder);
2. Overloading, improper inflation pressure or abuse;
3. Wheel misalignment, rim slip, tire/wheel assembly imbalance, mismatching of adjacent tires, or other vehicle conditions, defects or characteristics;
4. Abnormal stress from land leveling or earth moving operations;
5. Improper repair or improper insertion of sealant, balancing or filler materials;
6. Intentional alteration of either the appearance or the physical characteristics of the tire;
7. Improper maintenance, improper mounting, improper storage or conditions that cause accelerated aging; and
8. Failure to observe any of the "Owner-User's Obligations" published by Firestone

### LIMITED WARRANTY PERIOD & COMMERCIAL ADJUSTMENT POLICY

Tires are adjustable for ride-related conditions only during the first six months of service and before 1/32" of tread wear.

Tires that become unusable during the first year of service (proof of purchase must be attached to claim form) and worn less than 10% of the original tread, will be replaced without charge.

Tires that become unusable after the first year of service or worn beyond 10% of the original tread, will be replaced on a pro rata basis according to the schedule below.

To determine the replacement price, the appropriate pro rata percentage is multiplied by the owner-user's regular buying price. Appropriate taxes, mounting or other service charges are not covered by the warranty and will be added to the pro rata replacement price.

The replacement price will be prorated based on years of service from the original purchase date if proof of purchase is attached to claim form, or if proof of purchase is not available or if tire was not purchased new, then based on years from date of manufacture which is molded into the sidewall of the tire.

Years of Service or Age During	If Worn Less Than	Pro Rata Collection
2 <sup>nd</sup> year	20%	20%
3 <sup>rd</sup> year	40%	40%
4 <sup>th</sup> year	50%	50%
5 <sup>th</sup> year	60%	60%
6 <sup>th</sup> year	70%	70%
7 <sup>th</sup> year	80%	80%
8 <sup>th</sup> year	90%	90%
After the end of the 8 <sup>th</sup> year, coverage expires.		100%

### CONDITIONS AND EXCLUSIONS

THERE ARE NO WARRANTIES, EXPRESS OR IMPLIED, INCLUDING THE IMPLIED WARRANTY OF MERCHANTABILITY AND FITNESS FOR A PARTICULAR PURPOSE, WHICH EXTEND BEYOND THIS WARRANTY.

BATO specifically excludes any obligation for consequential damages or incidental expenses including claims for loss of use of the vehicle on which the covered tires are installed, loss of time, inconvenience, or commercial loss. Under no circumstances will BATO, its parent, subsidiaries or affiliated entities, be liable and expressly disclaim liability for any special, exemplary, indirect, incidental, contingent, consequential and punitive damages, for any cause of action, whether in warranty, contract, tort, strict liability or otherwise, of any kind or nature, including without limitation, loss of time or actual or anticipated profits, revenues, or business, loss of use of products or any associated equipment, cost of capital, facilities, substitute products or services, downtime, delay or slowdown costs, spoilage of material, or for any other economic loss, or inconvenience, whether or not either party was aware or should have been aware of the possibility of such loss or damages.

This Limited Warranty gives you specific legal rights. You may also have other rights that may vary from state to state. Some states do not allow limitations on how long an implied warranty lasts or allow the exclusion or limitation of incidental or consequential damages. The above limitation or exclusion may not apply to you.

Only the actual owner-user of the covered tires may make an adjustment claim under this Limited Warranty and Commercial Adjustment Policy, and only for tires used in the 50 United States and the District of Columbia.

### OWNER-USER'S OBLIGATIONS

Proper tire care is necessary to obtain maximum usage and wear.

The owner-user's obligations are to operate tires within tire load and speed limits (at cold air pressures specified by Bridgestone Americas Tire Operations, LLC for load and speed according to individual tire size, type, and load capacity) and to maintain proper alignment of wheels.

In case of an adjustment claim, the owner-user must present the tire to an authorized Firestone dealer or store, complete and sign the customer section of the adjustment claim form, attach to the claim form a copy of the proof of purchase showing the date the tire was purchased new or proof of purchase of the new construction equipment that the tire came on, and pay the appropriate replacement price, taxes and service charges for a new, current equivalent Firestone brand tire.

The obligation of Bridgestone Americas Tire Operations, LLC under this Limited Warranty and Commercial Adjustment Policy may not be enlarged or altered by anyone.

Copyright © 2025 Bridgestone Americas Tire Operations, LLC



BRIDGESTONE OFF THE ROAD SOLUTIONS



# Advanced Tire Monitoring Services with Bridgestone

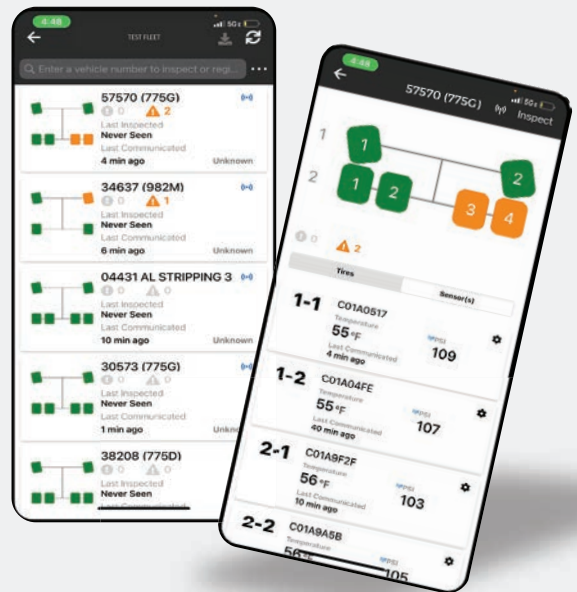
With Bridgestone's Tire Monitoring Service, you can proactively address tire pressure issues to help avoid downtime and keep your fleet running smoothly.

## Advanced Tire Monitoring Services

Bridgestone's robust tire pressure monitoring system is supported by software and components that are easy to install and use. Part of our comprehensive suite of offerings, it's designed to help reduce tire costs, increase labor productivity, and keep fleets moving.

## Features & Benefits

- In-yard and real-time active TPMS monitoring
- Digital inspections
- Management platform with easy-to-use app
- Critical alerts
- Custom fleet issue data reports
- Technician task lists
- Use your own device (Android, iOS, Desktop)
- External and internal sensor options
- Proven weather resistance (-40° to 248°)



For more info, scan the QR code, contact your Bridgestone rep or visit: [Commercial.Bridgestone.com](https://Commercial.Bridgestone.com)



# Asset Management

A globally integrated technology to enhance your total tire and rim life cycle management.

Bridgestone offers an off-the-road tire and rim solution that helps customers manage the life cycle cost of tires for increased efficiency and profitability.



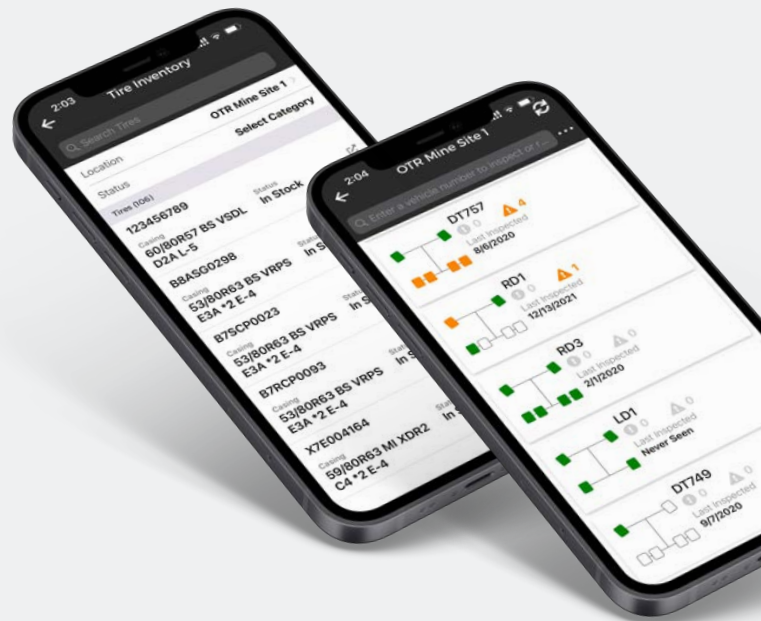
## Functionality for Success

Monitor each tire and rim's receiving inventory, mounting, inspections, rotation, repairs, retreads and regrooves—all the way to disposal. It leverages integration to real time data; such as our partnered TPMS (Tire Pressure Monitoring System), weather API's and more, to further enrich the quality of your data to use with tires.



## Comprehensive and Intuitive Reporting

Help maximize tread utilization, manage inventory, improve safety and minimize expenses across your entire organization. It's a powerful predictive analytics platform that places immediate, actionable reports for browser or mobile use.



For more info, scan the QR code, contact your Bridgestone rep or visit: [Commercial.Bridgestone.com](https://Commercial.Bridgestone.com)



# Education Matters. Having confidence in Bridgestone through experiential learning is what really matters.

A 2-day training class is offered for both our dealer sales teams and our end user customers who are interested in getting the most out of their tire investments through proper best practices of tire maintenance. Training locations are an exclusive visit to either of our manufacturing plants in Aiken, South Carolina, and/or the Bloomington, Illinois plant, and both offer a guided plant tour of our state-of-the-art manufacturing process. **Visit with your OTR Bridgestone Representative for calendar dates available.**

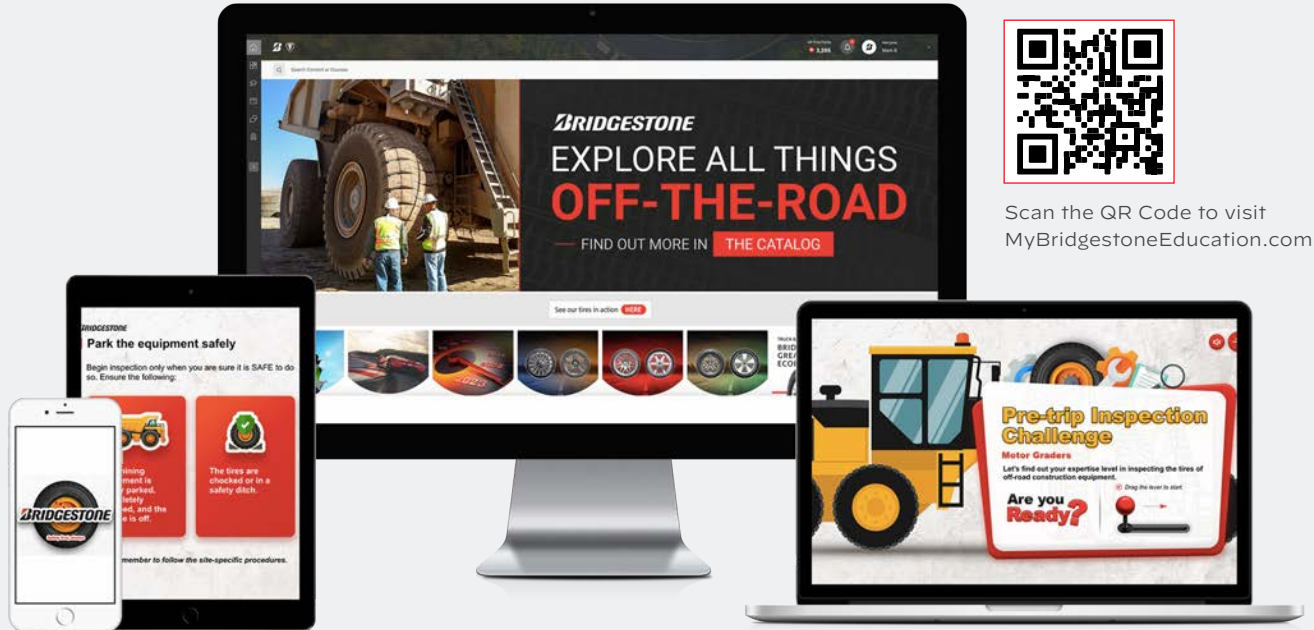
During classes you will learn about how a bias or radial tire is built and why it is essential to understand the tire's construction and how it relates to choosing the right tire for the operation. All classes are led by an experienced instructor with many years of working on a service truck and working in various types of off-the-road environments. The instructor's experience is transferred to the classroom by using hands on practical demonstrations, scenarios, and a live out of service tire analysis segment.full operating potential.

**BRIDGESTONE**  
*Solutions for your journey*



## Online Learning Available

Want to learn at your own pace and at your desk? Our Learning Management System (LMS) is available to all our dealer sales teams and end users' customers who have a 6-digit Bridgestone account number.



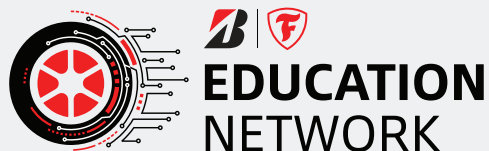
## Visit us at [MyBridgestoneEducation.com](https://MyBridgestoneEducation.com)

Click on sign up, and follow the steps to get an LMS account.

Registration is easy!



At [MyBridgestoneEducation.com](https://MyBridgestoneEducation.com), you can learn about OTR tire construction, how to read a sidewall, view safety videos, and learn about the latest tires features and benefits. Every quarter we have a **Learn to Earn** contest that you can earn branded merchandise while just simply learning about a product or service available.



# High performance products matter. A partnership that helps you move more? That's what really matters.



At Bridgestone, our goal, as a sustainable solutions company, is to co-create with our customers to amplify value through our products, solutions, and expertise that help deliver our business aspirations.

We know that productivity is tied directly to the dependability of your tires. That's why we're committed to arming you with solutions that keep you moving forward. Bridgestone Engineering Solutions offers expert field engineers that partner with you to optimize your tires. As a customer you get multiple solution offerings designed to help you move more with less.

**Learn about all of the engineering solutions  
Bridgestone Off the Road offers.**

**BRIDGESTONE**  
*Solutions for your journey*





# Take the uncertainty out of tire management.

## SITE & EQUIPMENT ASSESSMENT & CONSULTING

Leveraging our expertise beyond tires, Bridgestone field engineers are prepared to help identify opportunities to enhance surface and road conditions plus equipment maintenance.

## IN-SERVICE & OUT-OF-SERVICE TIRE INSPECTIONS

By analyzing the pressure, wear patterns and tread depth, our field engineers can proactively identify operational conditions impacting tire life.

## HEAT STUDIES

Learn how operating conditions and equipment usage could be leading to excess heat that negatively impacts tire life. Plus, correlate heat to TPMS and optimize alarm levels to help improve productivity.

## WEIGHT STUDIES<sup>1</sup>

Find the optimal payload weight to help reduce excess hauling cycles without overloading your tires and leading to premature removal. Plus, our team can calibrate on-site equipment to better ensure accurate analytics that impact performance.

## GPS ASSESSMENT & TMPH/TKPH CALCULATION

With insight into the haul patterns and speed as well as the load and distance requirements of your operation, engineers can recommend the optimal tire pattern and compound combination for your site.

## G-FORCE STUDIES

Help improve uptime and maximize productivity with site-specific assessments of the G-Force exerted during operation that can negatively impact tire performance.

## DRONE SURVEYS

Understand your site operations in real time with image and video captures via drone. Aerial photography gives us the ability to monitor site performance without impacting productivity.

## DATA ANALYSIS & REPORTING

Combining the power of tire and fleet management systems, dispatch, TPMS and vehicle data, our data analysis tools can give you a comprehensive evaluation of your operation, leading to proactive decision making and moving more.

## MARKET PERFORMANCE & INSIGHTS

Our design and engineering teams leverage market insights and performance data to improve future products.



Scan to learn about Bridgestone's commitment to helping you move more.



1. Incremental costs for this service.

2. "Best-In-Class Service" is based on the largest number of dealers in the commercial tire dealer network in the U.S. found on [www.commercial.bridgestone.com](http://www.commercial.bridgestone.com). As compared to the 2022 U.S. Replacement and Retreaded Medium/Heavy Truck Tire Brands with similar market share as listed in the January 2023 Modern Tire Dealer (page 34).

© 2025 Bridgestone Americas Tire Operations, LLC. All rights reserved.



200 4th Ave. S • Nashville, TN 37214

Customer Service

1-833-733-1754

✉ [OTRCustomerService@bfusa.com](mailto:OTRCustomerService@bfusa.com)







1-833-733-1754

[OTRCustomerService@bfusa.com](mailto:OTRCustomerService@bfusa.com)



PRINTED ON  
RECYCLED PAPER

**BRIDGESTONE** / **Firestone**

BS100 - V25.1 © Bridgestone Americas Tire Operations, All Rights Reserved.

"Best-In-Class Service" is based on the largest number of dealers in the commercial tire dealer network in U.S. found on [www.commercial.bridgestone.com](http://www.commercial.bridgestone.com). As compared to the 2022 U.S. Replacement and Retreaded Medium/Heavy Truck Tire Brands with similar market share as listed in the January 2023 Modern Tire Dealer (page 34).

