

**Canon**



# TRUE FLATBED PRINTERS FOR TRUE PROFESSIONALS

Meet the Arizona family

# EXCEPTIONAL IMAGE QUALITY ON RIGID AND FLEXIBLE MEDIA

Take your large format graphics capabilities to the next level with the Arizona series. These UV curable, true flatbed printers help you to produce flawless photo-realistic prints on nearly any media imaginable. With a completely renewed range of models to choose from, the Arizona series offers fantastic opportunities to boost your large format graphics revenue.

## World-renowned

Ever since its inception, the Arizona has been widely acclaimed. The original Arizona 250 GT was honored with the DPI Vision Award, given to the digital imaging product development most likely to have a profound and positive effect on the industry. Since then, the series has earned significant acclaim, collecting more than 50 industry awards for its exceptional image quality, versatility, and productivity. The Arizona series printers are truly the Best Selling Flatbed printers in the market in the last decade, with more than 7,500 units installed worldwide.

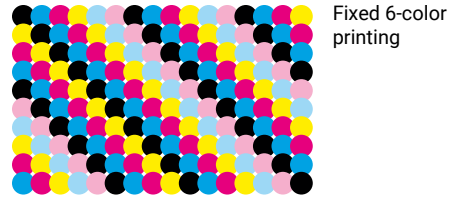
## VariaDot imaging technology

With their outstanding image quality, Arizona series printers give you the ability to offer premium printing services. The near-photographic image quality is due to VariaDot imaging technology. It uses variable-sized droplets and delivers finer details and smoother gradients in highlight areas, as well as crisp colors in the mid-tones and incredible density in shadows and solid color areas. Images look far superior to those printed on a conventional, fixed-droplet, 6-color inkjet printer, while consuming up to 50 percent less ink.

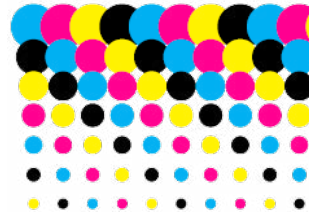
## 4- or 6-color VariaDot

Using 4-color VariaDot imaging technology gives you near-photo-realistic image quality perfect for interior decor and sign and display applications, while enjoying excellent ink economy. For even higher quality photo and fine art applications, optional light cyan and light magenta inks are available in certain models of the Arizona 1300, 2300, and 6100 series printers.

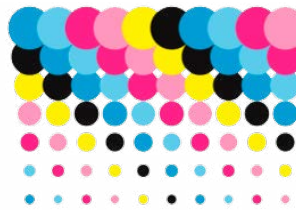




Fixed 6-color printing



4-color VariaDot imaging technology



6-color VariaDot imaging technology



Variable Dot Printing



Fixed Dot Printing

## Less is more

VariaDot imaging technology enables a printhead to produce droplets in different sizes instead of a typical single large droplet. It means images appear less grainy than those printed on a 6-color, fixed dot printer—regardless of the resolution. Varying the droplet size to as little as six picoliters also produces sharper images with smoother gradients and quartertones.

Conversely, the ability to create bigger droplets produces dense, solid colors. The net result is near-photographic image quality with sharpness usually expected at fixed resolutions of 1,440 dpi or higher.

Every Arizona printer can print perfectly registered, 4-color text lines with a six-point font size, and models equipped with the High Definition print mode can even produce perfect text lines with two-point fonts all day long.

In addition, the Arizona 135 GT, 1300, 2300, and 6100 series printers offer Active Pixel Placement Compensation.

The flatbed table is mapped to determine system flatness and actively adjusts pixel placement to create uniform, extra-sharp printing over the entire flatbed table.

On the Roll Media Option (RMO) the mapping is done dynamically, during printing. This compensates for the heating up of the platen by the UV lamps, leading to optimum print quality on the RMO.

## Help reduce ink costs by up to 50 percent

Because VariaDot imaging technology can jet exactly the right size droplet, it uses up to 50 percent less ink than fixed-droplet, 6-color printers. For every square foot of printing this equates to less than 0.75 ml of ink using 4-color VariaDot imaging technology or approximately 1.0 ml of ink using 6-color VariaDot imaging technology—cost savings that really count in today's business climate.

Produce stunning point-of-sales materials, wall panels for interior décor, backlit images, banners, exhibition graphics, displays, industrial applications, and more.

# PRECISION PRINTING WITHOUT COMPROMISE

An array of powerful features and innovative technology ensures that the Arizona series is the ideal true flatbed printer for a huge diversity of rigid and flexible media applications.

## VariaDot imaging technology

- True grayscale: 6-42 picoliter droplets for every possible image element
- Exceptional near-photographic print quality
- Finer details, smoother gradients, plus dense and uniform, solid colors
- Active pixel placement compensation to guarantee uniform, razor-sharp printing

## Roll media option

- Available as a factory order or field-upgrade on Arizona 135 GT, 1300, and 2300 series
- Supports flexible roll media up to 86.6" wide
- Proven reliability for unattended overnight operation

## Independent rigid and roll systems

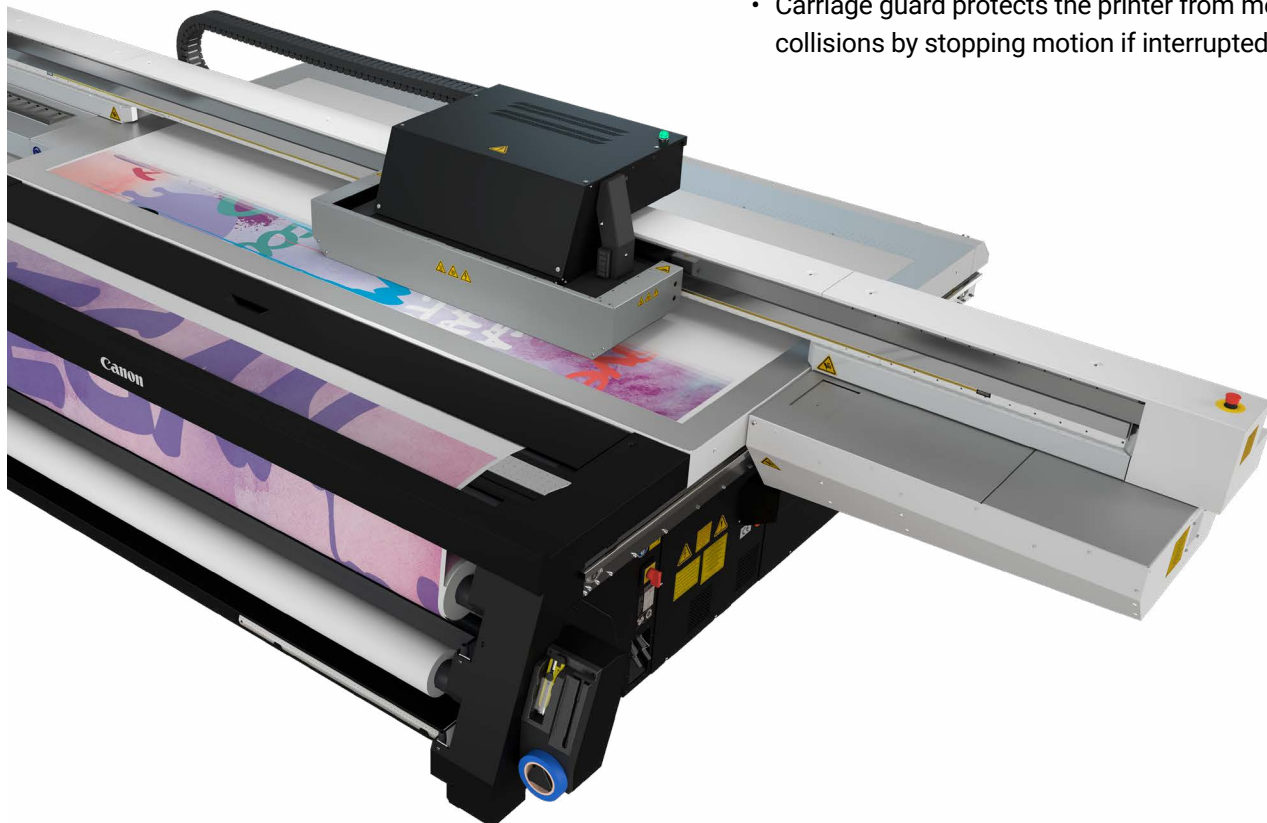
- Print on roll media while preparing your next rigid media job—no need to stop to change modes
- Compact roll media handling helps to reduce overall footprint and roll media waste

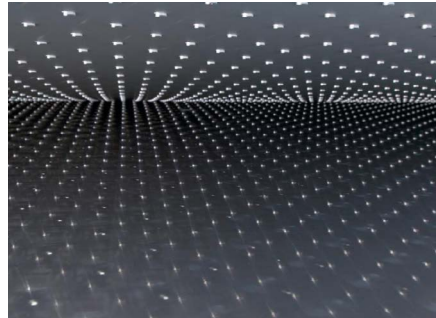
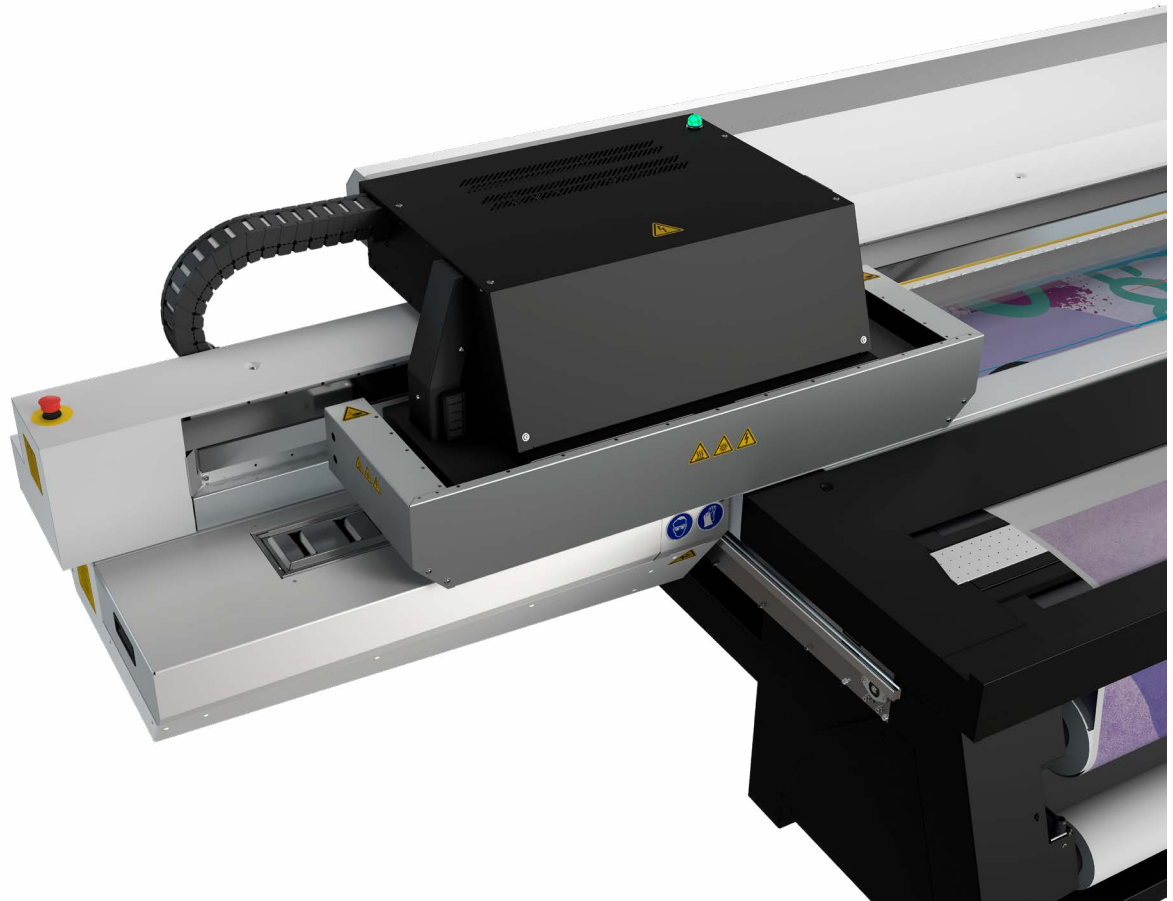
## Four, five, six, or eight independent ink channels (model dependent)

- Use white ink to print on colored media, create backlit, day-night, and opaque applications
- Print varnish applications with spot and flood gloss effects
- Utilize light cyan and light magenta for even higher quality photo and fine art applications

## Safety features

- Shuttered lamp area protects the operator and print heads from excessive UV exposure
- Carriage guard protects the printer from media collisions by stopping motion if interrupted





### Easy operation

- Single-phase electrical power
- Reprint a job with just one click
- Batch mode for efficient production of complex multilayer jobs
- Pneumatic driven self-retracting media registration pins (model dependent)
- Advanced operator functions such as Step & Repeat and Mirror

### True flatbed

- Support for rigid media or objects up to 2" (50.8 mm) thick
- Edge-to-edge (full bleed) printing
- Easy, precise double-sided printing
- The 6- or 7-zone vacuum system holds the media in place, helping to eliminate time-consuming table masking for standard sized jobs

### Bulk ink system

- Inks in quick-release bags
- Easy replacement on-the-fly
- Temperature-regulated system maintains consistent ink viscosity
- Low-ink warning system

# ENDLESS PRODUCTION POSSIBILITIES

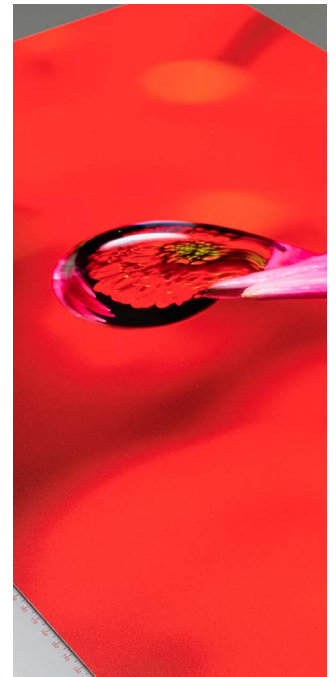
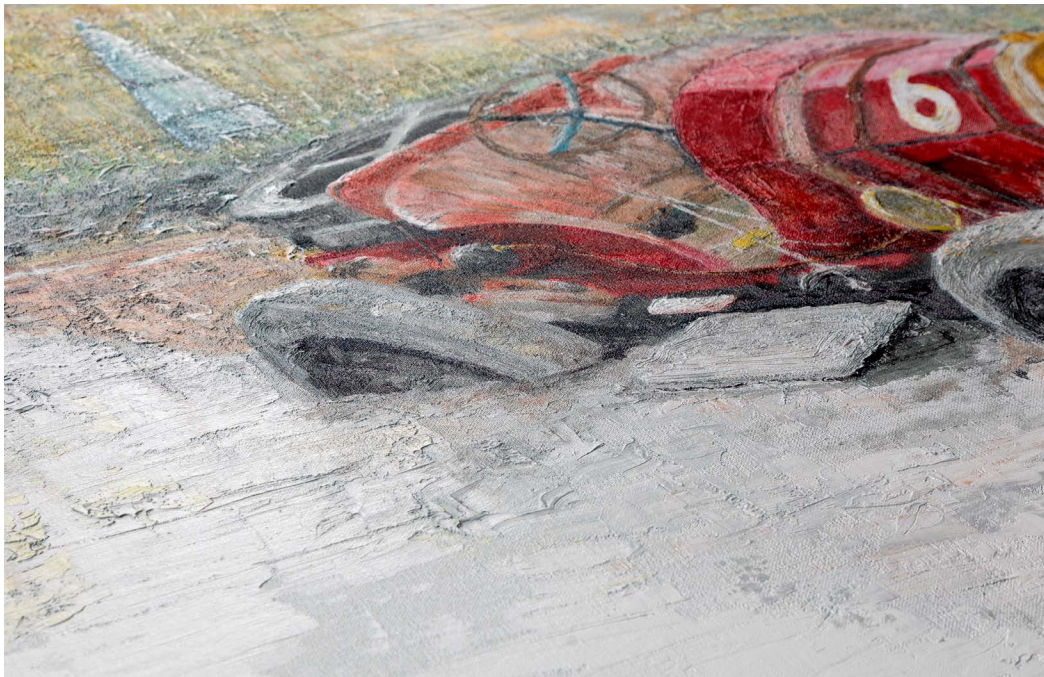
The Arizona series opens the door to a world of specialized applications that can command premium prices. Unlike conventional rigid capable printers that use friction or belt-feed systems, the Arizona series can print on just about anything. That means irregularly shaped or non-square items, heavy substrates, and materials that have an uneven surface, such as wood. They are also perfect for complex technical or industrial printing applications where accurate, repeatable print geometry is critical.

## Perfect registration

Align media in perfect registration using the pneumatic, self-retracting media registration pins (model dependent). A vacuum system holds rigid media stationary on the printer's flat table surface, ensuring perfect registration

even on multiple imaging passes or double-sided printing applications. Print edge-to-edge (full bleed) to save time and labor cost in finishing. A time-saving batch mode is provided in certain models for the efficient production of complex, multilayer jobs.

The latest Arizona series printers enable exciting new applications using instant-on features such as LED lamp technology, elevated printing, and job-automation software to unleash your customers' creativity.



## Flexible media printing

With the Roll Media Option (available on the Arizona 135 GT, 1300, and 2300 series) you can print on a wide range of flexible media without compromising the rigid printing workflow in any way. These include banners, textiles, films, self-adhesive vinyls, and various indoor and outdoor papers. And unlike most systems, the two printing areas do not interfere with each other: while printing on the Roll Media Option, the operator can set up the next rigid media job on the flatbed without disrupting the printing process. The Roll Media Option directly increases profitability by enabling unattended overnight printing on flexible media up to 86.6 inches wide. Using the Roll Media Option, print service providers can print continuously on rigid media during the day and roll media at night, helping to maximize return on investment and the lead time of critical orders.

## Six or eight independent channels

The Arizona 1300 and 2300 series introduce new levels of versatility. Six or eight independent ink channels allow varnish applications for spot and flood gloss effects, as well as white and even double-opacity white ink if varnish is not required. White ink enables printing on non-white media or objects (under-printing), creating backlit applications on transparent media (over-printing) and using white as a spot color. It allows you to simultaneously print white between layers of color for a day-night image that can be backlit or not, depending on the time of day.

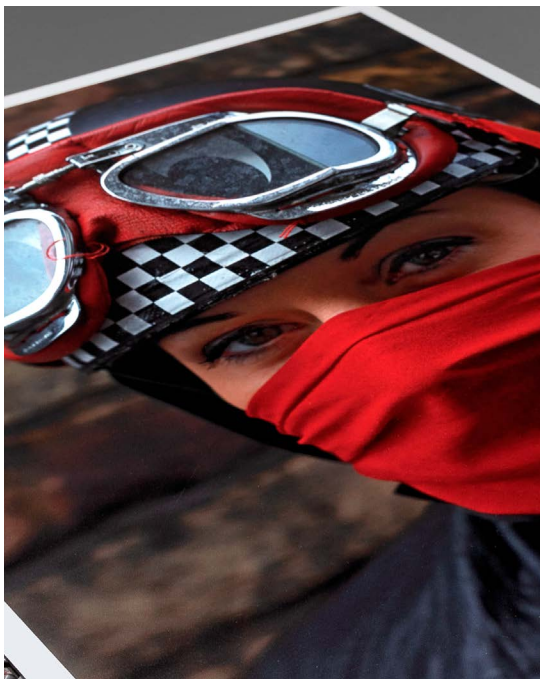
Six or eight ink channels means that optional support for 6-color printing using light cyan and light magenta for even better print quality for photographic or fine art applications is now available. The multiple user-selectable vacuum zones supporting standard media sizes without table masking also significantly help to increase system productivity.

## Extra productivity

The extra width of the Arizona XTF models enables usage of continuous imaging modes for rigid media up to a standard 4 x 8 foot board (1.25 m by 2.5 m). Two rigid boards of this size can be mounted on separate vacuum areas of the flatbed table. While one board is being printed, the operator can change the other. Since the printer never has to stop printing for a media change, operators can significantly increase their net print production.

## Arizona FLXflow technology

Previously known as FLOW technology, FLXflow adds additional functionality to the flatbed printer. FLXflow offers the original Hold feature which uses an airflow technique that allows for a zone-less, multi-origin table layout. While the new optional Float feature with Instant Switch functionality floats heavy substrates on a cushion of air, and is designed to help operators easily position boards into registration, reducing damage and waste. The Instant switch functionality then allows operators to switch between Hold and Float at the tap of a pedal.



# MEET THE ARIZONA FAMILY

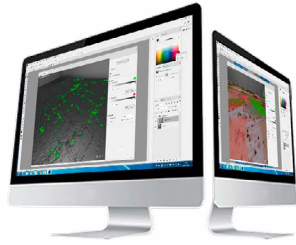




	Arizona 135 GT	Arizona 13x0 GTF	Arizona 13x0 XTF	Arizona 23x0 GTF	Arizona 23x0 XTF	Arizona 61x0 XTS Mark II Arizona 61x0 XTHF Mark II
<b>Applications</b>						
POP displays Posters Signage and banners Wall panels Transit advertising Backlit displays Special applications and more...				•		
<b>Rigid media print area</b>						
98" x 49" (2.5 m x 1.25 m)	•	•	-	•	-	-
98" x 121" (2.50 m x 3.08 m)	-	-	•	-	•	•
<i>Note: 126 in. x N in. permitted w/121 in. vacuum</i>						
<b>Rigid media thickness (max)</b>						
2" (50.8 mm)	•	•	•	•	•	-
1" (25.4 mm)	-	-	-	-	-	•
<b>VariaDot imaging technology</b>						
6 to 42 picoliter droplets, 636 nozzles per head, one printhead/color, single row design				•		
<b>High-Key print speed</b>	-	548 ft <sup>2</sup> /hr	568 ft <sup>2</sup> /hr	958 ft <sup>2</sup> /hr	1,023 ft <sup>2</sup> /hr	2,368 ft <sup>2</sup> /hr
<b>Express print speed</b>	368 ft <sup>2</sup> /hr	368 ft <sup>2</sup> /hr	380 ft <sup>2</sup> /hr	620 ft <sup>2</sup> /hr	691 ft <sup>2</sup> /hr	1,668 ft <sup>2</sup> /hr
<b>Production print speed</b>	224 ft <sup>2</sup> /hr	224 ft <sup>2</sup> /hr	229 ft <sup>2</sup> /hr	395 ft <sup>2</sup> /hr	427 ft <sup>2</sup> /hr	1,076 ft <sup>2</sup> /hr
<b>Quality print speed</b>	157 ft <sup>2</sup> /hr	157 ft <sup>2</sup> /hr	161 ft <sup>2</sup> /hr	280 ft <sup>2</sup> /hr	297 ft <sup>2</sup> /hr	775 ft <sup>2</sup> /hr
<b>Pneumatic Registration Pins</b>						
Pneumatic	-	•	•	•	•	•
Dual origin	-	-	•	• (L/R)	• (L/R)	•
Quadruple origin	-	-	-	-	•	-
<b>Automatic Printhead Maintenance System</b>						
Included as standard equipment for hands-free printhead maintenance, restoring nozzle function in seconds				•		
<b>UV curing technology</b>						
LED-UV	•	•	•	•	•	-
Low heat UV arc lamp	-	-	-	-	-	•
<b>Printer configurations</b>						
4 ink channels	-	1340 GTF	1340 XTF	2340 GTF	2340 XTF	-
5 ink channels	135 GT	-	-	-	-	-
6 ink channels	-	1360 GTF	1360 XTF	2360 GTF	2360 XTF	6160 XTS & XTHF Mark II
7 ink channels	-	-	-	-	-	6170 XTS & XTHF Mark II
8 ink channels	-	1380 GTF	1380 XTF	2380 GTF	2380 XTF	-
<b>Ink configurations</b>						
CMYK	-	1340 GTF	1340 XTF	2340 GTF	2340 XTF	-
CMYK & W	135 GT	-	-	-	-	-
CMYK & WW	-	1360 GTF	1360 XTF	2360 GTF	2360 XTF	-
CMYK & WV	-	1360 GTF	1360 XTF	2360 GTF	2360 XTF	-
CMYK & cm	-	-	-	-	-	6160 XTS & XTHF Mark II
CMYK & cm & W	-	-	-	-	-	6170 XTS & XTHF Mark II
CMYK & cm & WW	-	1380 GTF	1380 XTF	2380 GTF	2380 XTF	-
CMYK & cm & WV	-	1380 GTF	1380 XTF	2380 GTF	2380 XTF	-
<b>Ink certification</b>	GREENGUARD Gold					
<b>Ink configurations</b>						
1-ink channel upgrade	-	-	-	-	-	6160 XTS & XTHF Mark II
2-ink channel upgrade	-	1340 GTF	1340 XTF	2340 GTF	2340 XTF	-
Field-upgrade	-	1360 GTF	1360 XTF	2360 GTF	2360 XTF	-
<b>Durability of output</b>	Up to 2+ years					
<b>Roll Media Option</b>	○	○	○	○	○	-
<b>Elevated printing</b>						
by PRISMAelevate	-	○	○	○	○	-
by PRISMAguide XL	○	○	○	○	○	○
<b>Job-automation</b>						
by PRISMAguide XL				○		
<b>On Remote Service</b>				•		

• Standard ○ Optional - Not available

## Do it smarter



### **PRISMAelevate**

Discover the ability to print textured, layered, and complex high-value applications. The PRISMAelevate package consists of the ALPS engine and an Adobe Illustrator and Photoshop extension. Depending on your application, you can do elevated prints with ALTO (Colors) or BRILA (Varnish). PRISMAelevate is compatible with the Arizona 1300 and 2300 series, in combination with IJC357 ink.

### **PRISMAguide XL**

PRISMAguide XL is a prepress-stage software optimization that helps save operators time and money by making complex, multi-layered jobs easy and predictable, automating the process for future jobs using the same recipe. PRISMAguide XL is compatible with the Arizona 135 GT, 1300 series, 2300 series, and 6100 series.

## Designed to work together

Canon offers the ONYX Workflow Suite to get the most out of an Arizona series flatbed printer. The ONYX Thrive workflow solution is the preferred solution for Arizona series flatbed printers. ONYX Thrive and ONYX Connect can drive all your current and future printers and connects your production environment to the rest of your company and, most importantly, to your customers.

### **The RIP solution**

To prepare files for printing, a RIP, or “raster image processor,” is a vital part of the flatbed printing workflow. A state-of-the-art RIP is powered by Adobe technologies including the Adobe PDF Print Engine and Adobe Normalizer, which maintain fidelity of the creative intent and help eliminate late-stage surprises. It can also process the color information in the file so you can properly color manage the entire process using an ICC workflow. ONYX Thrive is the preferred RIP solution for the Arizona flatbed printers.



### **ONYX Thrive**

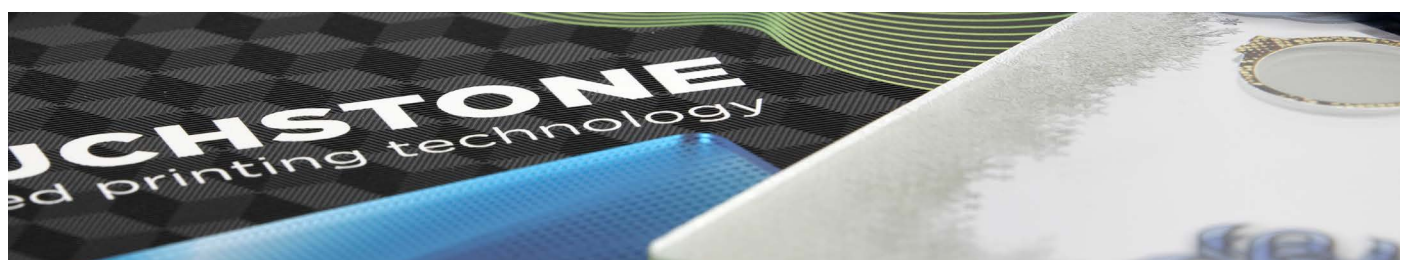
ONYX Thrive workflow software is a scalable print production solution based on Adobe PDF Print Engine technology. ONYX Thrive is a true end-to-end PDF workflow from digital file submission through color management, printing, and cutting. ONYX Thrive software manages the wide format print production workflow process offering print service providers accurate, predictable, high quality printing results, and helping reduce costly errors. ONYX Thrive offers plug-in options such as ONYX Textile or ONYX Connect to connect to your production and finishing workflow and to your customers.

### **ONYX Connect**

ONYX Connect is an open system that provides a simple developer interface to connect your current business workflow solutions to ONYX production software, without needing to replace existing business workflows with a proprietary or RIP-specific solution. ONYX Thrive can seamlessly integrate with your Enfocus Switch production workflow to automate repetitive tasks and integrate with popular applications from industry-leading providers. This is an optional plug-in module available for ONYX Thrive.

### **On Remote Service**

Ongoing commitment to innovation embraces the development of not only our outstanding quality products but also advanced service concepts and solutions. On Remote Service (ORS) is one such productivity-focused toolset. It has been designed to help increase uptime and offer valuable preventive service capabilities. In the development of our latest family of printers, ORS even opens up important predictive capabilities, to raise uptime and performance to new levels.



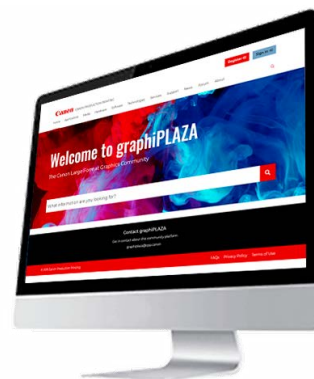
graphiplaza.cpp.canon



# graphiPLAZA

## Large Format Graphics Community

graphiPLAZA is home to Canon Production Printing's Large Format Graphics user community. It keeps users informed of the latest market trends, inspires them with best practices around the world, and allows them to discover new applications. You can also search an extensive database of manufacturer-independent media profiles that are compatible with the Arizona printer family. User documentation, technical documentation, and firmware and software upgrades are available in a few mouse clicks. Would you like to converse with peers about a variety of topics? Join the interactive graphiPLAZA forum.



### Unlock new possibilities with Canon

Canon is a world leader in professional imaging. We are ranked 11th in the 2022 list of the World's Most Reputable Companies by the Reputation Institute. Canon Production Printing, manufacturer of the Arizona, has more than a century of experience in printing and is one of the main innovation centers of Canon. Our aim is to create a global network of expertise for visual communication and industrial printing.

### Together, we are shaping tomorrow

At Canon Large Format Graphics, we believe in the power of the visual world. We share a passion for printing and are dedicated to making sure you stand out.

### Imagine what's next, guided by you

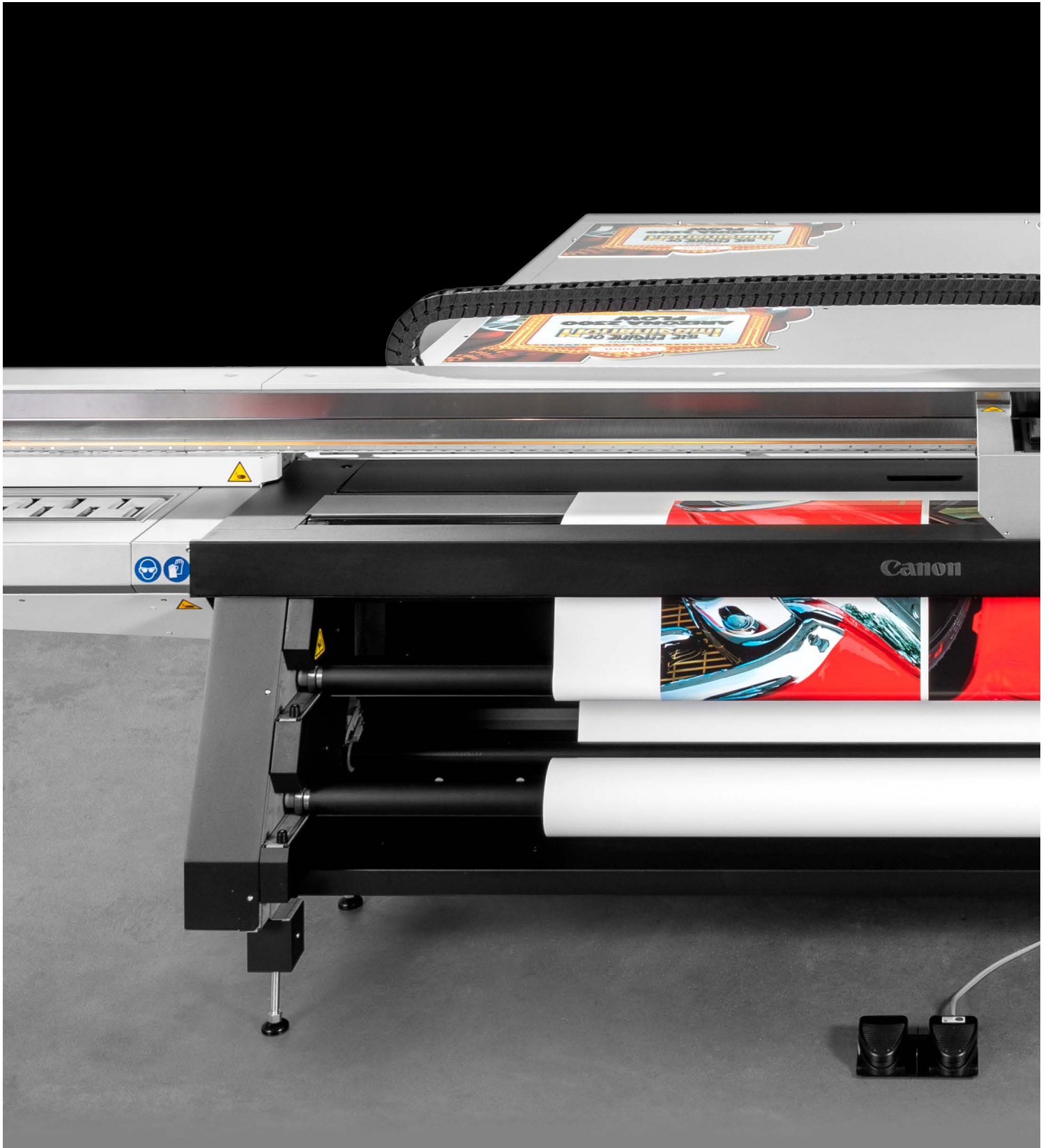
We learn first-hand from the people who are changing the world we live in. Supported by your feedback, we work with our partners to develop next-generation technologies and products. Can you dare to imagine what you're going to do next? Let's do it together! Together, we can shape tomorrow: experts working with experts, accelerating innovation.



graphiPLAZA is an online community for Large Format Graphics printers.

### Come join us!

Scan the QR code to learn more.



**Canon**

[usa.canon.com](http://usa.canon.com)

Canon is a registered trademark of Canon Inc. in the United States and elsewhere. Arizona is a registered trademark or trademark of Canon Production Printing Netherlands B.V. in the United States and elsewhere. Adobe® and Adobe Photoshop® are either registered trademarks or trademarks of Adobe Systems Incorporated in the United States and/or other countries. All other referenced product names and marks are trademarks of their respective owners and are hereby acknowledged. Output and effects may be simulated. Company names reflected in print samples are fictitious, and any resemblance to the name, character, or history of any business is coincidental and unintentional. graphiPLAZA is an online user community, sponsored by Canon Production Printing Netherlands B.V., access to which requires user registration according to its terms of use. Neither Canon Inc., nor Canon U.S.A., Inc., makes any representations or warranties with respect to third party products. GREENGUARD Gold Certification for the Arizona's IJC255, 256, 257, 258, 261, 262 and 357 UV curable inks resulted from testing against the UL 2818 – 2013 Gold Standard for Chemical Emissions for Building Materials, Finishes and Furnishings.  
© 2024 Canon U.S.A., Inc. All rights reserved.  
03/24-0746-10701

0746-10701 03/22/24