

Canon



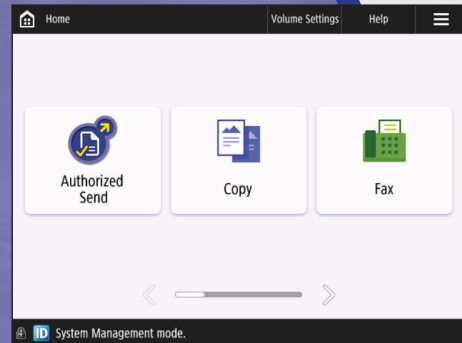
AUTHORIZED SEND

Color
imageCLASS X
MF1538C II

AUTHORIZED SEND COMPACT EDITION



- Serverless
- Streamlined
- Secure



AUTHORIZED SEND COMPACT EDITION

Authorized Send Compact Edition was created to meet your ever-changing business needs. This platform is user-friendly, customizable, and was built from the ground up with the ability to add features and functionality to grow as your needs evolve and change.

POWERFUL, INTEGRATED, SERVERLESS DOCUMENT DISTRIBUTION

Designed for small- to mid-size workgroups within an office or home environment used as part of an organization's print fleet, the Canon imageCLASS X MF1538C II printer offers speedy performance, minimal maintenance, and the ability to expand paper capacity for busy groups. Print, copy, scan, and fax capabilities help you accomplish necessary functions with just one machine.

Many offices and businesses rely on Canon imageCLASS X MF1538C II devices for copying, printing, scanning, and faxing. These powerful machines are renowned for providing outstanding productivity and efficiency in document workflows.

Yet, as technology has made sending digital information to email and network locations possible at the press of a button, the security of the documents at every stage of their life cycle has become a critical part of office workflows. Company policies and government regulations increasingly require stringent controls to help protect the privacy of information.

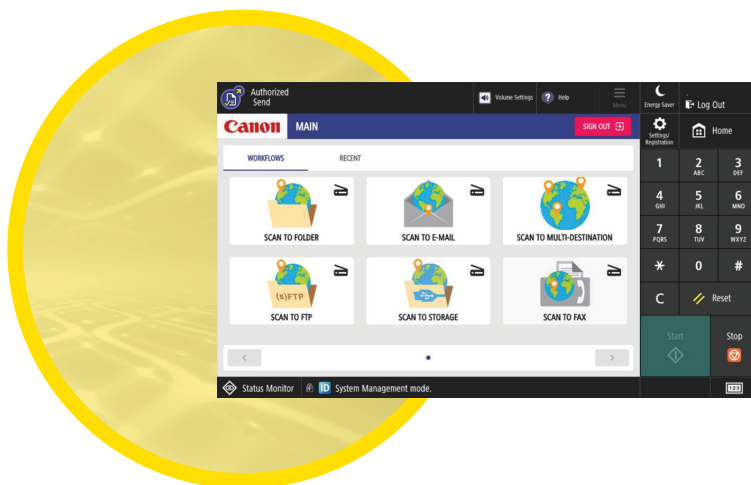
Gaining better control of how users transmit, receive, maintain, retain, collaborate, and destroy information is becoming increasingly important. Many local, state, and federal regulations now require audits and the ability to track, log, and examine those transactions is now paramount to everyday business practices.

OVERVIEW

Authorized Send (A-Send) Compact Edition is a MEAP application developed by Canon U.S.A. This serverless application can be installed on Canon imageCLASS X MF1538C II devices.

Authorized Send Compact can help your organization manage its information.

- Maintain productivity by allowing users to perform common walk-up operations, such as basic copying, without locking down the device.
- Reduce administrative burdens for MFP and document management.
- Restrict scanning and sending capabilities to authorized users while controlling who can receive transmitted documents.
- Offer preconfigured capture, process, and route scan workflows.
- Process and route scan workflows to single or multiple destinations, which can increase efficiency and help reduce manual errors and/or lost documentation.
- Allow authorized users to print from their folder structure directly at the interface. This can enable an organization to offer its users the most up-to-date information, such as forms and company documentation. This also reduces excess prints and helps reduce waste.



SHARE INFORMATION, DOCUMENTS, AND IDEAS EFFICIENTLY

Organizations today need to be more focused on how they transmit, receive, maintain, retain, collaborate, and destroy information. Authorized Send Compact enables users to easily scan and index business-critical information to their appropriate locations, thereby making it easier than ever to save and share information.

THE AUTHENTICATION ADVANTAGE

With Canon Authorized Send Compact installed on your imageCLASS X MF1538C II devices, authorized users can send scanned documents via email, fax, and fax servers. Scanned documents can also be sent to an FTP server, SMB folder, Advanced Box, SharePoint Servers, SharePoint Online™, and even multiple Google Drive™ destinations with just a few taps of the touchscreen. Additionally, OneDrive™, SharePoint Online™, and Exchange Online™ are supported in the Government Community Cloud (GCC) High Environment.

Common walk-up functions such as copying and Mail Box can still be available to any user without authentication. Yet, without impacting everyday access, Authorized Send Compact allows control of document distribution required by many companies and government agencies. It's the ideal mix of security features, flexibility, and productivity.

When the optional Smart Card Service (SCS)¹ is installed on Canon imageCLASS X MF1538C II systems, Authorized Send Compact can support Common Access Card (CAC)² environments and authenticates against Public Key Infrastructure (PKI) and Personal Identity Verification (PIV) servers, helping to reduce security vulnerabilities.

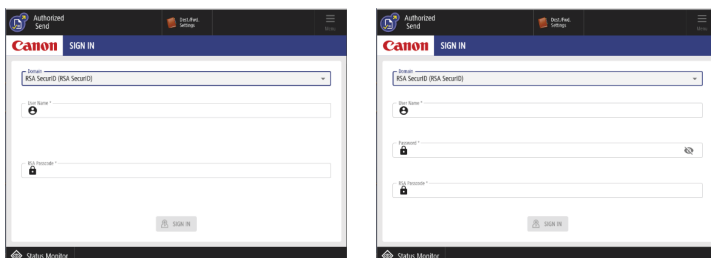
Authorized Send Compact can also support ULM (Universal Login Manager) integration. Users can log in with their MEAP log-in application and link with their Authorized Send Compact user account. User credentials can be preserved to scan documents to shared folders or other destinations.

Authorized Send Compact Edition Version 1.0 supports RSA SecurID. Authentication Server V8.5 Tokens/OTP (One Time Password) authentication methods.³ Depending on how Authorized Send Compact is configured⁴ with RSA SecurID, users are either prompted to enter their RSA SecurID user name and passcode, or their RSA SecurID user name and passcode along with their Active Directory (Windows domain) password. This helps provide an additional level of security for scanning, sending information, releasing print jobs, and more.

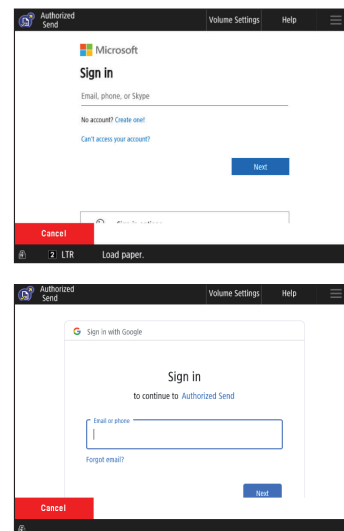
FAST, SIMPLIFIED DISTRIBUTION

Authenticated users simply log in to Authorized Send Compact with their user name and password or smart card to access Authorized Send Compact and its functions. Scanned documents can then be distributed quickly to preset groups of approved recipients. Users can also create new folders to store or archive scanned documents or just send to specific individuals.

RSA SecurID Authentication



Example of Cloud Service Authentication



SERVERLESS AND EASY TO USE

Company initiatives and compliance strategies only work when IT and users adopt the solution. Authorized Send Compact is a simple-to-install, serverless, feature-rich application that provides users one-touch access to their most frequently used scan workflows with an easy-to-use interface.

INTUITIVE/CUSTOMIZEABLE OPERATION

Users entering their name and password have quick access to a simple touchscreen interface that puts Authorized Send Compact controls and choices at their fingertips. The Job Build function lets users scan multiple documents and send them by email or to predetermined folders.

Standardized buttons control scanning and faxing functions that can be quickly adjusted for paper size, image resolution, brightness, color, image mode, simplex or duplex, and file format. Addresses of recipients can be prepopulated automatically and users can search the address book for additional names or add new ones as needed.

Administrators can create “Favorite” one-touch buttons based on users’ common requirements, providing simplicity and convenience, and helping to reduce user errors. For example, buttons can be set up for frequently used workflows, destinations, and specific distribution lists.

CLEAR FILE NAMES

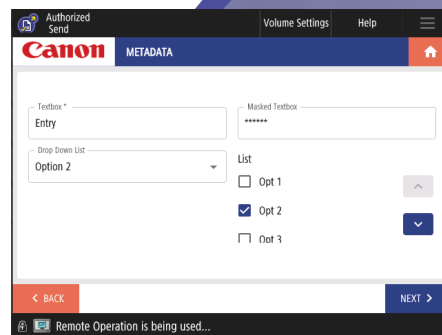
With documents growing in complexity and volume every day, it’s more important than ever that file names be easily understood, especially when multiple documents are combined in a single file. Using a syntax predefined by the administrator (User Name, Date, Time, Device IP, plus up to eight User Input Fields), Authorized Send Compact users can define and create file names that will make sense to all recipients.

The contents of user input fields can be modified and the scanned document’s file name is automatically populated with a user name/time/date stamp to aid tracking.

To further help clarify the information being transmitted, Authorized Send Compact allows the option of adding multiple fields of metadata to documents in XML or Text format, facilitating archiving and ease of use.

WEB ADMIN USER INTERFACE AND CONFIGURATION DISTRIBUTION

A web-based servlet residing on a Canon imageCLASS X MF1538C II device* lets administrators configure all scanning, faxing, and distribution settings on a single, similar MFP, then distribute that configuration to other machines. Based on organizational requirements, virtually all features and settings can be enabled or disabled, both globally and for individual users, providing flexibility for users and user access rights where it’s desired. Having functions defined by the administrator helps to simplify operation and helps ensure that users follow procedures for increased efficiency, device control, and productivity. In addition, the administrator can control the application’s images and colors to provide brand identity within the application.



* To assign rights to individual user level, a log-in application (ULM) and Access Management System (AMS) are required; both are included in supported imageCLASS X MF1538C II devices.

HELP SAFEGUARD COMMUNICATIONS

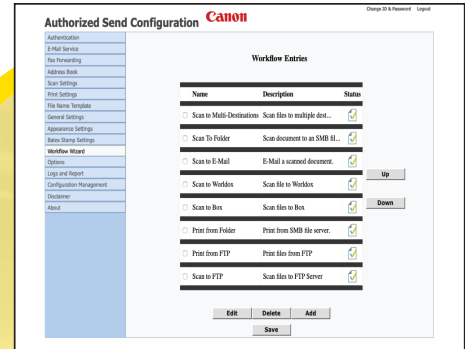
Authorized Send Compact can be easily configured. It's designed to tap into your organization's existing workflow while helping to increase efficiency and productivity. Track, log, and audit when users send your core business information inside and outside your organization.

SERVERLESS

Shifting hosting, processing, storage, and input/output onto a single device eliminates the need to invest in, and support, costly dedicated application servers. Excellent for environments with large storage requirements yet relatively few applications, serverless technology is well-suited for offices where printing, scanning, and faxing are parts of a mission-critical workflow. Authorized Send Compact can help take the pressure off users and administrators by letting them focus on their jobs, without worrying about server reliability and performance.

USER ACCESS CONTROL

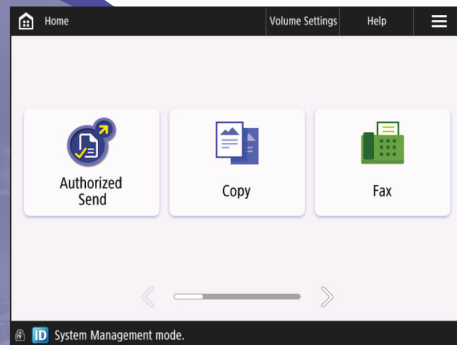
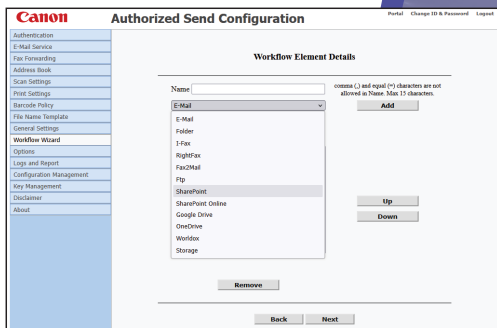
As a customizable solution, Authorized Send Compact is ideal for many corporate environments and select government agencies or departments. It provides the control and accountability needed for documents, from scanning through distribution.



STREAMLINED DISTRIBUTION AND DEPLOYMENT

Authorized Send Compact raises the bar on convenience and efficiency. Documents can be seamlessly scanned and distributed to a variety of destinations from a single MFP with just the touch of a few buttons. It's easy to set up in multiple offices to ensure the same features and settings are in each location.

With Authorized Send Compact and your Canon imageCLASS X MF1538C II devices, you get powerful document distribution for your critical business communications.

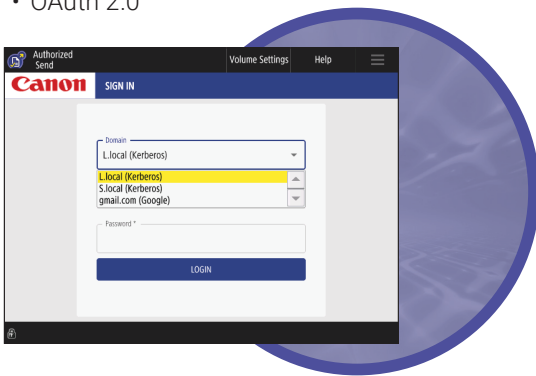


AT-A-GLANCE

Robust features provide organizations with virtually endless possibilities for scan destinations and distribution choices.

AUTHENTICATION

- This provides individualized user authentication to help with flexibility and security with rights assigned to users.
- This supports multiple authentication protocols, including Kerberos, NTLM, Simple Binding, and Anonymous Binding.
- This enables administrator's authentication, allowing access without end users having to provide sign-in credentials.
- ULM integration.
- OAuth 2.0



SUPPORTED MODELS

- Compatible with Canon imageCLASS X MF1538C II.

SCANNING AND DISTRIBUTION CHOICES

- Scan documents to email, networked folders, FTP/S-FTP/FTP-S servers and Microsoft® SharePoint® servers (2016 and later), SharePoint Online™, fax servers, Advanced Box, RightFax, Google Drive™, OneDrive®, or multiple destinations.⁵
- Scan to SMB folder, including user's Home Folder and Shared Folders.
- Support Distributed File System (DFS) for stand-alone DFS root folders and Share Clustered File Servers.
- Create image or PDF documents.
- Browse sub-folders to store related documents.
- Create up to eight fields of metadata and include with scanned documents for enhanced identification and tracking.
- Easily rescan and send documents to the same destination repeatedly.
- Transmit documents automatically to users' Home Folder.
- Create file names using predefined syntax at Canon MEAP-enabled Canon imageCLASS X MF1538C II MFPs.
- Support for SMB v2.
- Support for SMB v3, including the following:
 - Scan to Folder where the share destination supports SMB v3 with features including signing and encryption (if enabled).
- Scan to Folder where the share destination is located on failover or scale-out clustered servers.
- Scan to Active Directory ("AD") Group User's Folder.



usa.canon.com/business



¹ Installation of optional Smart Card Service requires professional services, which are sold separately.

² Requires SCS v3.6.1 to support for multiple certificates for A-Send CAC.

³ Version is subject to change at any time.

⁴ Administrators will need to configure their RSA SecurID Authentication Server to work with certain features of Authorized Send Compact; customers should consult their Authorized Send Compact Guide.

⁵ Subscription to a third-party service may be required. Subject to third-party provider terms and conditions. Support for OneDrive™, SharePoint Online™, and Exchange Online™ is available for GCC High.

Canon U.S.A., Inc. makes no warranty of any kind with regard to this material, expressed or implied, except as provided herein, including with limitation, thereof, warranties as to marketability, merchantability, fitness for a particular purpose or use or non-infringement. Canon U.S.A., Inc. shall not be liable for any direct, incidental, or consequential damages of any nature, or losses or expenses resulting from the use of this material. Canon products offer certain security features, yet many variables can impact the security of your devices and data. Canon does not warrant that use of its features will prevent security issues. Nothing herein should be construed as legal or regulatory advice concerning applicable laws; customers must have their own qualified counsel determine the feasibility of a solution as it relates to regulatory and statutory compliance. Subscription to a third-party service required. Subject to third-party service provider's terms and conditions. Neither Canon Inc. nor Canon U.S.A., Inc. represents or warrant any third-party product or feature referenced hereunder. Canon, imageCLASS, and MEAP are registered trademarks or trademarks of Canon Inc. in the United States and may also be registered trademarks or trademarks in other countries. Apple, iPad, and iPadOS are registered trademarks of Apple Inc., registered in the U.S. and other countries and regions. App Store is a service mark of Apple Inc. All other referenced product names and marks are trademarks of their respective owners. Specifications and availability subject to change without notice. Not responsible for typographical errors.