

Canon

PRISMAguide XL



Workflow Automation Software



SOFTWARE THAT EMPOWERS

Large-format print service providers (PSPs) work in a fast-paced, high-pressure environment—managing time-sensitive estimates and intricate prepress workflows while ensuring cost efficiency for every job. At the same time, they must attract new clients and deliver expert guidance to both designers and customers. **PRISMAguide XL** rises to help meet these challenges, empowering PSPs to streamline operations, reduce costs, and deliver high value, raised print experiences that **fuel business growth**.

High Value Applications

Create print applications with tactile, textured, and raised print for prototyping, packaging, display print, wallpaper, contemporary art, labels, embossed signage, and more.

Prepare multi-layered print jobs up to five layers with FLXture using UVgel on a Colorado series printer, and up to 15 layers on an Arizona series printer.

Print matte and gloss on a single application with the Colorado series printers.



KEY FEATURES AND FUNCTIONALITY

PRISMAguide XL is designed with key features and functionalities to help you save time and money, increase efficiencies, and open new business opportunities with high-value applications.

Recipes and Hot Folders

Complex multi-layered print applications such as nesting and FLXfinish+ are automated with Canon-designed Recipes. Recipes can be edited and re-saved with your own new job workflows.

Prepress and print settings are stored in Recipes for repeat use on any job.

Recipes can also be modified and saved anew.

Hot Folder functionality automatically applies Recipes to your final print output. Drop your print file into the Hot Folder and the Recipe is automatically applied and sent to the printer.

New Canon Recipes are added to upgrades when available.

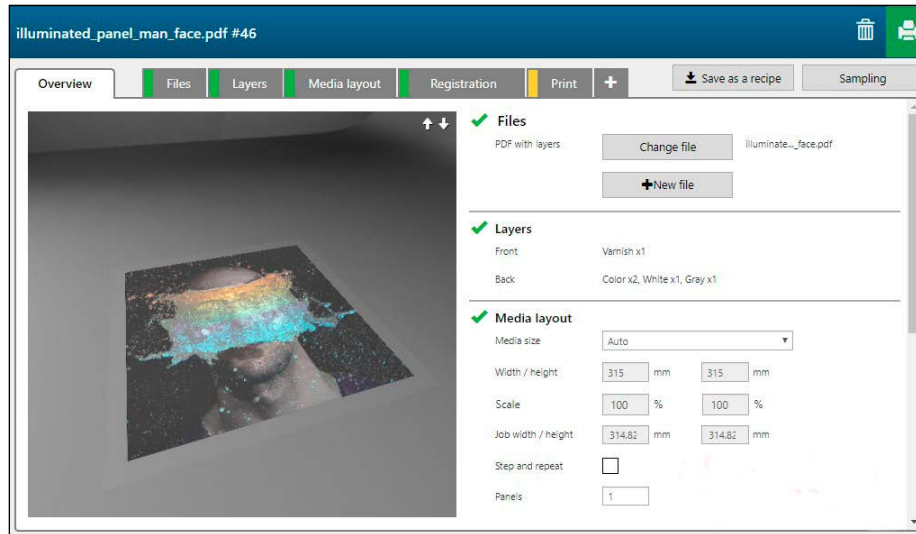


Arizona Recipe Settings

Arizona Recipe Preview

3D Preview

3D previews show each layer and color of a single or double-sided print job. Prepress operators and designers can view applications through the Overview before printing. The onscreen image can be rotated and flipped showing exactly how the image will print before you commit to your media.



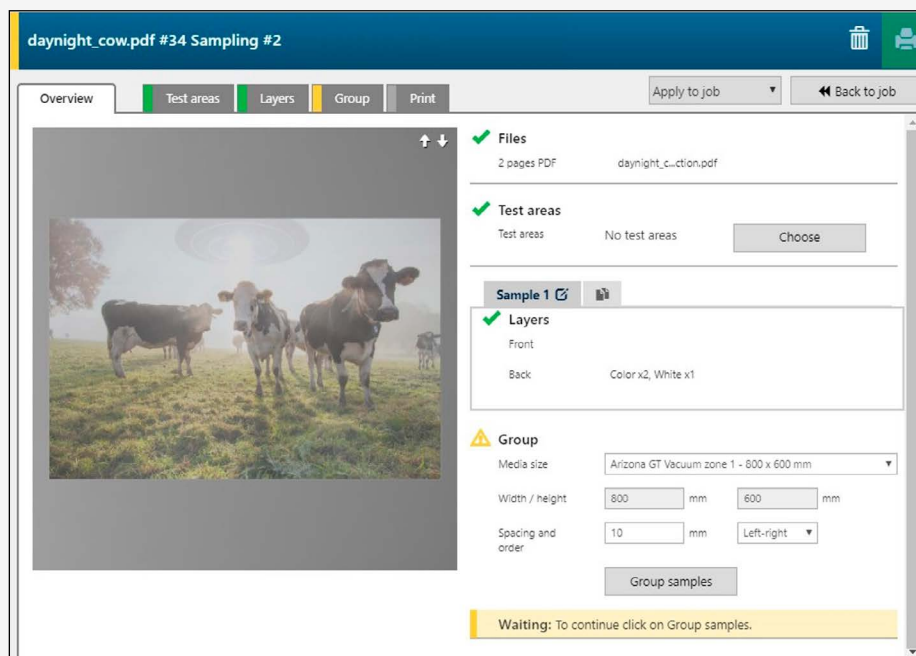
3D Previews in the PRISMAguide XL Overview tab.

Smart Sampling

Find the optimal settings when creating new Recipes with Smart Sampling.

Multiple cropped and uncropped samples with different print settings can be printed as a single batch, saving time and media.

Choose your preferred sample and automatically save and store in a Recipe for future use.



Various sampling features can be used by switching between the tabs.

Intelligent Nesting

Multiple jobs of unusual shapes are intelligently organized on a single sheet or roll of media, reducing production time while avoiding costly proofs and errors on expensive media. Select multiple jobs and group them into one or more panels based on the number of copies required for each job. The nesting process uses a rectangle-based layout with customizable settings such as margins, spacing, and job rotation options. Thanks to the multi-panel printing feature, multiple nested panels can be printed simultaneously.

Cut then Print allows the media to be precut before printing.

Option to select a spot and add it to the ignore list. The spot color layers are not printed in the color layers, but the data is still available as a layer or cut source.

Rectangular nesting.

The screenshot displays the 'NESTING JOB #112' interface. At the top, there are icons for trash, settings, and print. Below the title bar, there are tabs for 'Overview', 'Nesting', and 'Print'. The 'Nesting' tab is active, showing a preview of the nesting layout on the left and configuration options on the right. The preview shows a grid of beach balls and stars on a gray background. The configuration options include: Media size (Custom), Width / height (500 mm x 400 mm), Allow rotation (unchecked), Spacing (0 mm), Horizontal / vertical margin (0 mm x 0 mm), and Cut options (None). At the bottom, there are navigation buttons for 'Previous', '1 / 2', and 'Next', along with a 'Media usage: 81.42 %' indicator.

Intelligent nesting function window

Backlits



Multi-layer Window Graphics



Matte with Spot Gloss



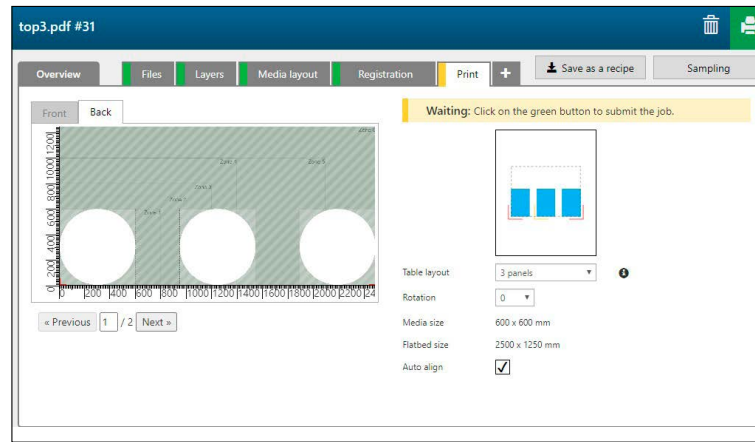
Multi-Panel Table Setups

Select a table layout with the Multi-Panel feature to help optimize space and vacuum zones leading to long-term efficiencies. Up to five panels can be printed at once.

User-definable origins in the X and Y directions are remembered from previously used origin locations, helping to easily register media where you choose.

Option to print registrations with white ink.

White source layer type shows the correct layers in the printer UI, preserving white and opaque transparencies within the input file.



Double-sided Setups

Right align your double-sided print jobs, enhancing workflow and work and turns for maximum ease.

Snap and Align

Easily Snap and Align media to the center, edges, or corners without additional effort.

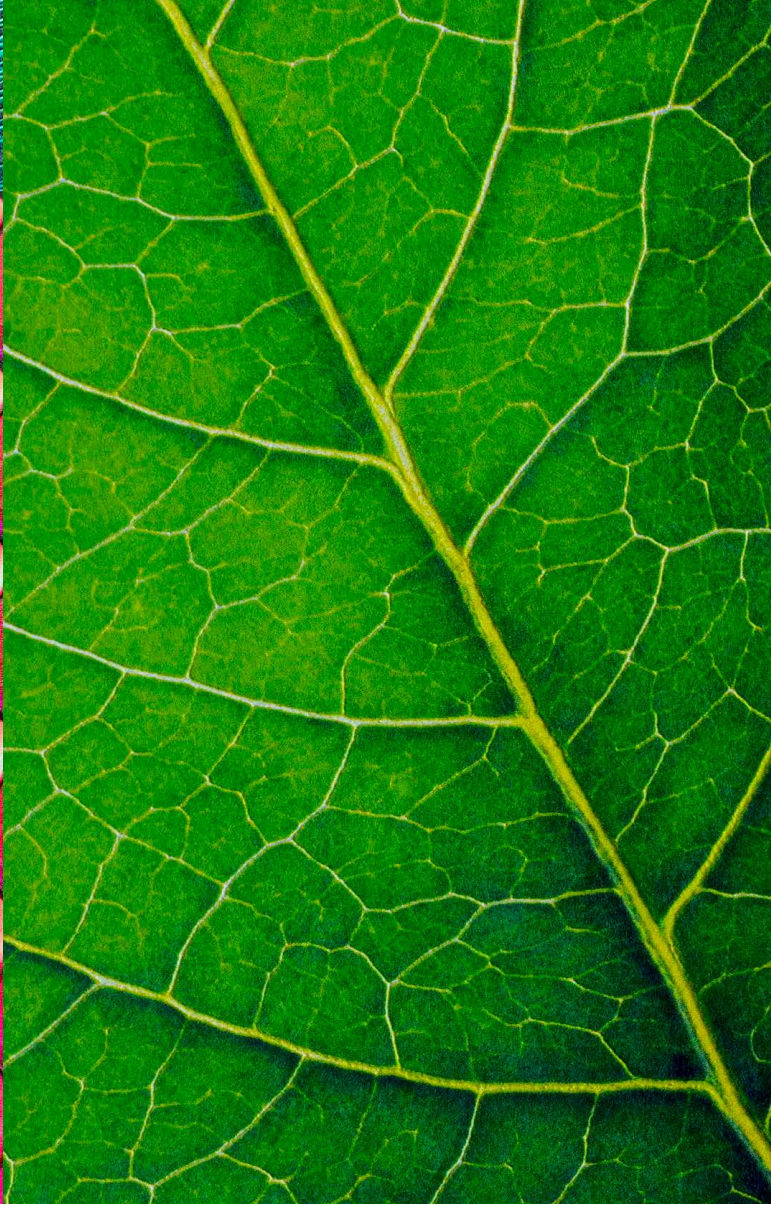
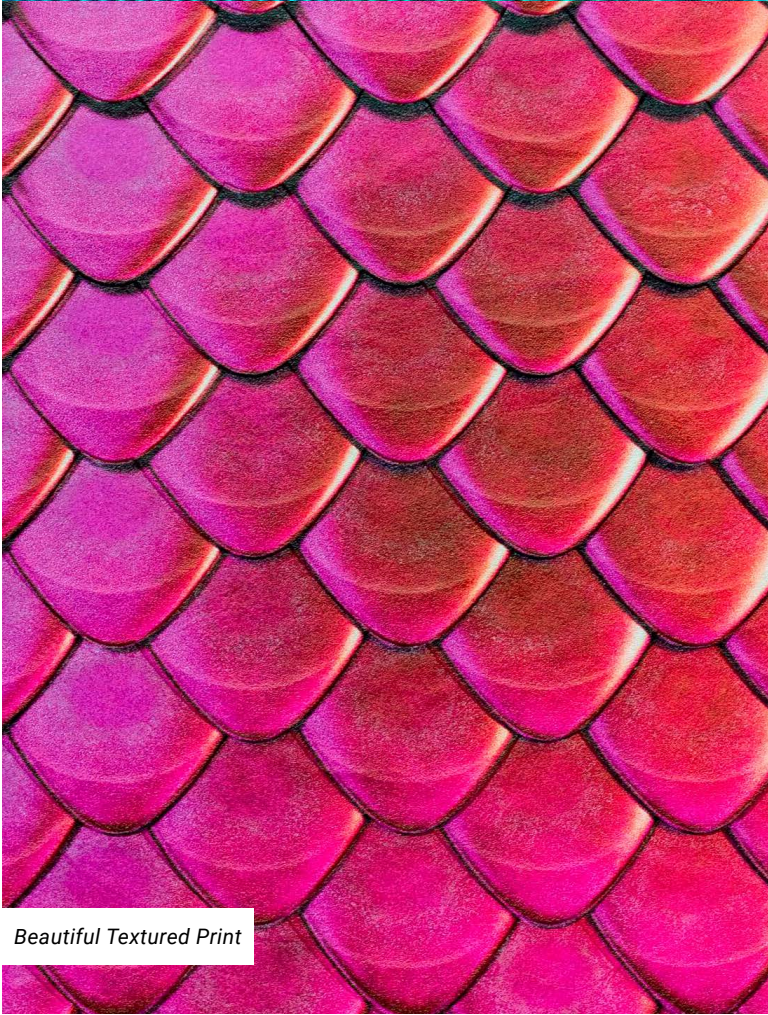
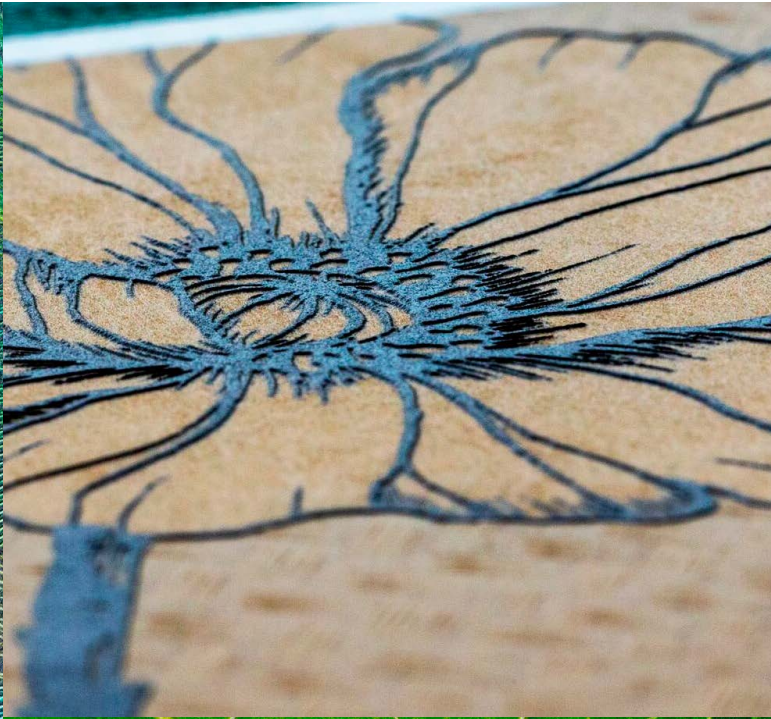
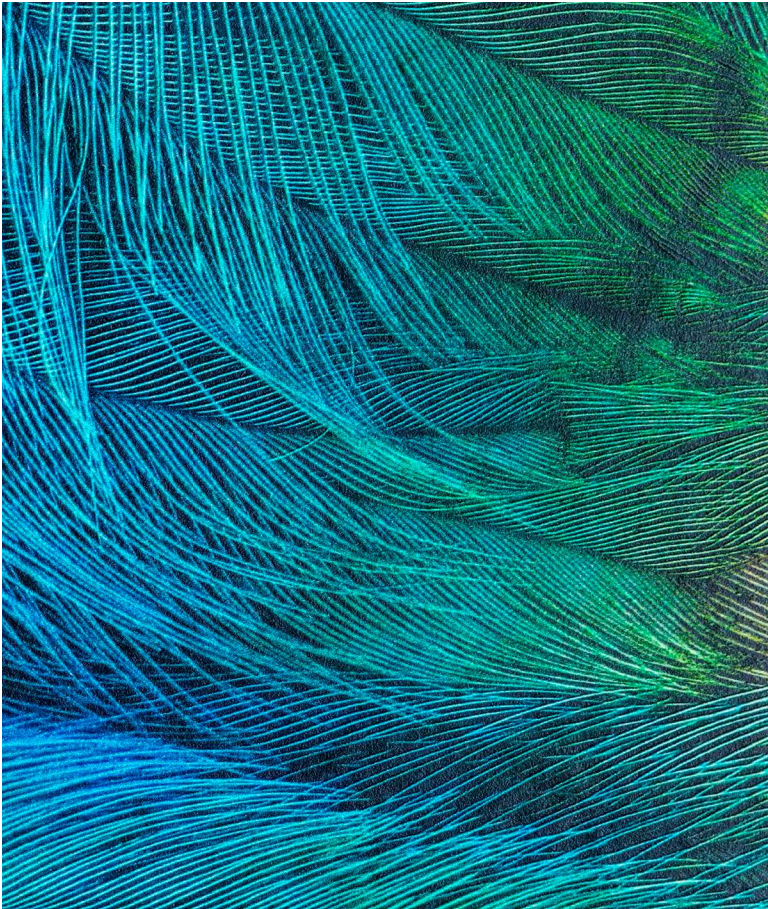
There are nine predefined positions and one custom position. The custom position allows the user to position the job manually through offsets or margins.

Complex One-Off Prints, and Automating Repetitive Print Jobs Through Hot Folders

Data from powerful features of ONYX Thrive and CalderaRIP, such as Media Profiles and Print Modes, are sent directly to the printer and can be deployed on single prints.

Alignment and adjusting of ink layers can be altered to optimize the print recipe.

Hot folders enable you to streamline your production process straight to the printer. No setup work is required in your RIP.



Beautiful Textured Print



Standout Environmental Graphics with Tactile Ink



Wallpaper Applications with Tactile Finish

PRISMAGUIDE XL SUPPORTED PRINTERS AND RIPS

Supported printers

Colorado 1630, 1650, M-Series, XL7R, XL7H Series Printers

Arizona 135 GT, 1200, 1300, 1300 with FLXflow, 2200, 2300 with FLXflow, 6100 and 6100 Mark II series printers

Supported and Recommended Rips

The recommended workflow solutions for PRISMAguide XL are those manufactured by ONYX Graphics.

Printer(s)

- All supported Arizona printers
- All supported Colorado printers

Recommended and Supported RIP

- ONYX THRIVE version 24 and above only
- ONYX Thrive version 24 and above, Caldera version 17 and 18.



Browser and Extensions

Google Chrome™ browser is required to be installed. Google Chrome™ is not included in the PRISMAguide Engine installer.

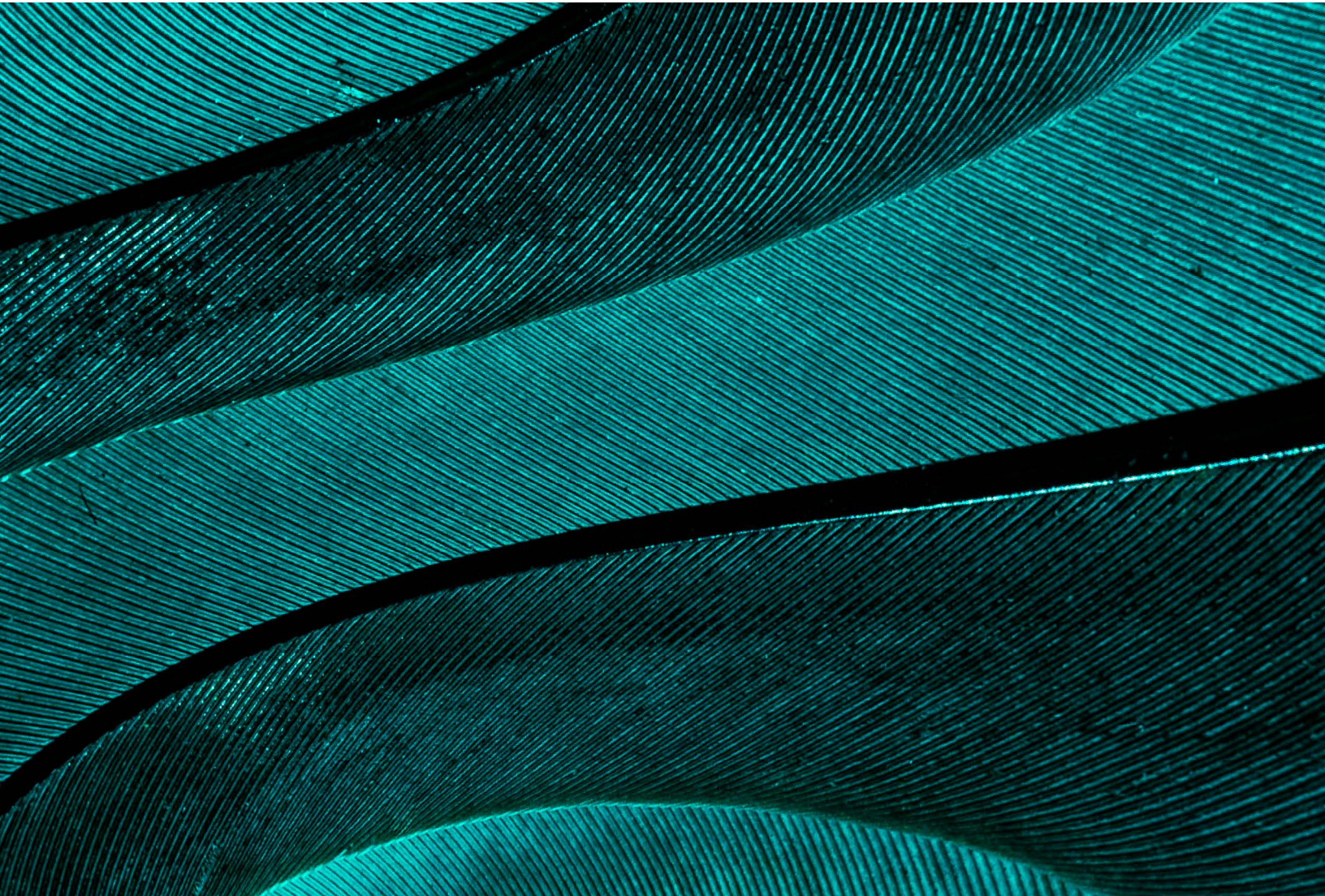
PRISMAguide XL extensions are available for Adobe Illustrator and Adobe Photoshop

Operating System Requirements

Microsoft® Windows 10 minimally version 1903, 64 bit.

Microsoft® Windows 11.

Mac® OS.





usa.canon.com/largeformat