

DC-618 SLITTER/CUTTER/CREASER

Automated, Precision Finishing for Shorter Runs

DC-618 SLITTER/ CUTTER/CREASER

The fully automated DC-618 Slitter/Cutter/Creaser is Duplo's compact yet powerful, precision finisher. With its ability to slit, cut, crease, and perforate in a single pass, the DC-618 helps to deliver professionally-finished applications up to 23 sheets per minute.

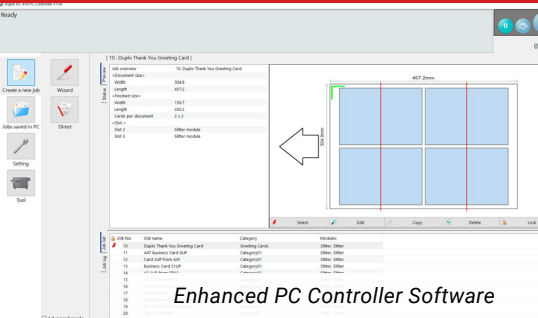
Help remove touchpoints and increase productivity. Finish digital print jobs with fast turnarounds. Perfect for all your short runs, the DC-618 produces a wide range of applications including 24-up business cards, greeting cards, tickets and coupons, brochures, and much more. Bring precision finishing in-house!



NO MANUAL SET UPS

Help cut job costs by doing away with time-consuming set ups and makeready times. With the DC-618, you can efficiently operate the system from a PC station (sold separately). The PC Controller software features a newly enhanced interface and makes it easy to program jobs for multiple-up finishing with up to six slits, 30 cuts, and 20 creases. Help save time by storing virtually an unlimited number of jobs on the hard drive and recall them when needed. Use the job template library and sample PDFs to ensure margins and gutters are set correctly for optimal finishing.

Alternatively, the LCD color touchscreen control panel can be utilized to program and store up to 250 jobs in memory.



Enhanced PC Controller Software



Air Suction Feed System

DC-618 shown with optional PC and PC arm.



SAVE UP TO 90% IN SETUP TIME WITH FIERY® IMPOSE

Use Fiery Impose to automate job preparation and finishing setup to help eliminate manual data entry in Fiery Driven™ print environments. You can automate the imposition and finishing of common jobs, such as business cards, right out of the box using templates from the how-to guides. For high-value custom jobs, you can quickly create an imposition layout with cut, crease, and perforation settings using Fiery Impose, then have the settings automatically communicated to the DC-618.

With no additional programming required on the DC-618, this workflow helps to accelerate production turnaround time while eliminating operator touchpoints and errors!

Download the how-to guides and templates at fiery.efi.com/duplo-integration.



PERFORATION MODULES HELP INCREASE VERSATILITY

Enhance the capabilities of your DC-618 by adding up to two optional modules. Combine the Rotary Tool and Cross Perforation to produce tickets, coupons, and reply cards with T- or L-shape perforations.

- Manual Perforation Module performs continuous perforations along the length of the sheet. Ideal for coupon and ticket applications.
- Rotary Tool Module performs perforations, micro-perforations, and scores along the length of the sheet. Tools are positioned automatically and can perform strike perforations.
- Cross Perforation Module performs perforations and micro-perforations along the width of the sheet. Tools are positioned automatically and can perform strike perforations.



AUTOMATED REGISTRATION AND CHANGEOVERS

Help reduce downtime between jobs by adding a barcode and registration marks. When reading the barcode, the built-in CCD scanner can automatically recall and change over the job in an instant without any intervention required. The CCD scanner can also read the registration marks on every sheet to compensate for any shrinkage and image shift, in both horizontal and vertical directions, on the fly.

The DC-618 utilizes Duplo's signature air suction belt feed system, which feeds from the top of the stack to help minimize scuffing and reduce static between the sheets. The ultrasonic double-feed sensor detects when two or more sheets have been fed and its soft sponge rollers allow you to finish raised spot UV-coated applications with confidence.



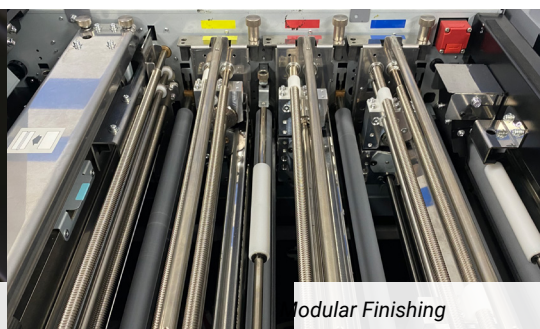
PRECISION FINISHING SECOND TO NONE

Automating the finishing process allows your operator to focus on other tasks. Equipped with rotary slitters, a guillotine cutter, and a depth-adjustable creaser, the DC-618 offers the versatility of multiple devices in one. Margins and gutters are trimmed horizontally by the slitter and vertically by the cutter then deposited into the waste bin. Only the finished pieces are delivered onto the exit tray.

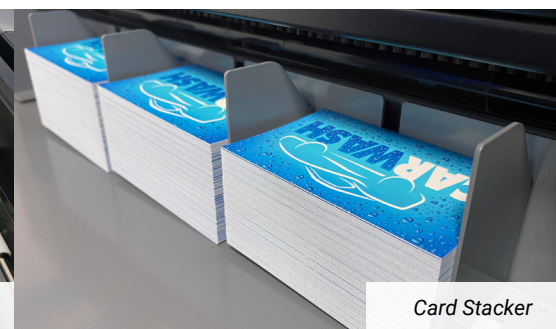
Creasing digitally-printed jobs such as greeting cards, book covers, and brochures prior to folding helps to prevent toner cracking and unattractive fold lines. The creaser utilizes male and female matrix channels to create a hinge along the sheet to be folded with ease. Use the adjustable three-step crease depth or the new crease width tool to optimize performance when processing thicker stock up to 400 gsm.



Barcode and Registration Mark Scanner



Modular Finishing



Card Stacker

APPLICATIONS

2-up Coupons on 13" x 19" with T- and L-shape Offset Perforated Cards



Finished Pieces

1-up Flyer on 12" x 18" with One Fold and L-shape Perforated Card



Fold with IFS in One Pass

Finished Pieces



Scan to Watch the Video

- All-in-one finishing for short run jobs
- Helps eliminate touchpoints and reduces downtime
- Removes margins/gutters and helps to prevent toner cracking
- Creates custom T- and L-shape perforations
- Folds multiple-up pieces with DC In-Line Folder



SPECIFICATIONS

DC-618 Slitter/Cutter/Creaser

Speed	Up to 23 sheets per minute (8.5" x 1" 2 cuts, 1 crease and CCD scanner off)
Input Paper Size	8.26" x 8.26" to 13" x 39.3" (210 mm x 210 mm to 330.5 mm x 1,000 mm*)
Min. Finished Size	1.89" x 1.97" (48 mm x 50 mm)
Tolerance	± 0.3 mm business cards; ± 0.2 mm on programmed position
Feeder Capacity	3.9" (100 mm)
Paper Weight	110 - 400 gsm
Slits	Up to 6 per sheet
Cuts	Up to 30 per sheet
Creases	Up to 20 per sheet
Memory	250 jobs using the control panel
Standard Features	Air knife, side air kit, card stacker, fan registration, automatic gutter slit deflectors, crease depth and width adjustment, ultrasonic double-feed detection sensor, feed skew adjustment, batch separation, waste box, emergency stop switch, CCD scanner, PC Controller software, PC pole mount, long paper tray, LCD color touchscreen panel
Options	<ul style="list-style-type: none"> • PC and PC Arm, 48" long conveyor stacker, and TF375 PLUS In-Line Folder • PFM-04 Manual Perforation Module includes 2 perforation manually adjustable tools • RTM-08 Rotary Tool Module includes 2 each of perforation, micro-perforation, and scoring tools. Up to 2 RTM-08s can be installed in the unit at one time, replacing slitter modules. The OMK-13/14 Motor Kits must be installed when using both • CPM-08 Cross Perforation Module includes 1 each of perforation and micro-perforation tools • The OMK-13 Motor Kit must be installed when using only one RTM-08 or CPM-08 module • The OMK-13/14 Motor Kits must be installed when the RTM-08 and CPM-08 are being used together • DC In-Line Folder with DC-F100 Folder and Stacker
Power Requirements	115V: 2.3A, 60Hz
Dimensions (W x D x H)	67" x 32" x 44" (1,690 mm x 810 mm x 1,125 mm)
Net Weight	375 lb. (170 kg)

* Length is 29.5" (750 mm) when using standard long paper feed tray.

Production rates are based on optimal conditions and may vary depending on stock and environmental conditions.



1-844-50-CANON | usa.canon.com/business