

**Canon**

**GAIN TIME AND INSIGHT  
WITH INTELLIGENT GRADING**



# Gain Valuable Insight While Helping to Save Time and Money

Intelligent Grading Solution (IGS) Pro Test Grading is an easy-to-use, cloud-based solution designed to help streamline and simplify the test grading process. It quickly grades both online and paper tests using bubble sheets that are printed on plain copy paper, helping educational institutions to save significant dollars annually on form and hardware costs. With advanced test analytics and integrations to popular Learning Management System (LMS) software, IGS Pro helps educators be more effective while complementing existing technologies.



# Easy to Use and Flexible

IGS Pro Test Grading solution offers the utmost in ease of use, flexibility, and cost savings.

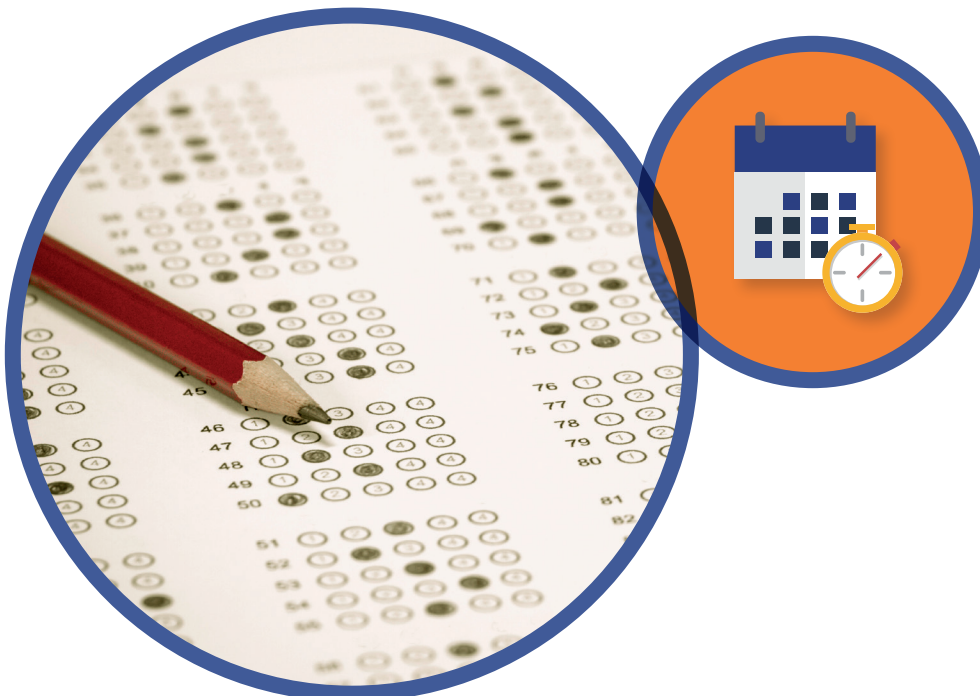
## For Administrators

IGS Pro helps allow busy teachers to quickly create and grade tests in the cloud so they can accomplish more with less. With just a few clicks of the mouse, teachers can create an online test or printable test answer sheet for student distribution.

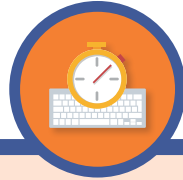
For online tests, links are emailed directly to the students. Once the tests are completed and submitted, they're then automatically graded using the answer key provided by the instructor. And it's just as easy for hard-copy tests. These are printed for every student (personalized or generic). Completed tests are scanned and graded according to the answer key the teacher provides, and meaningful reports are generated and then sent back to the teacher.

## For Instructors

Rapid turnaround of test results helps you focus your energy where it's needed the most. When you know where your students, teachers, and schools stand academically, you can make adjustments to your curricula or provide assistance to struggling students to help with comprehension of your course material. IGS Pro provides the tools needed to help obtain that information quickly and accurately. When grading online or printed tests, questions can be linked to common core standards, skills, or other learning objectives. You can then use these results to assess each student's performance and identify those who need extra help. Results can be easily included in many common LMS systems for centralized record-keeping.



# Why Use IGS Pro?



## Help Gain Time and Control

- Eliminate manual grading.
- Clearly see those subject areas requiring additional time.
- Use any scanner or multifunction printer (MFP) to grade your completed tests.
- Choose to print your own test sheets or distribute tests online.
- Include a class roster or capture images of student names for no-roster grading.
- Choose from standard test templates or build your own.
- Create and customize your own answer sheets.
- Review the built-in test grading reports that show student, class, and test performance.
- Adhere to modern security standards.



## Support Cost Reduction

- Create and print your own test answer sheets, thereby reducing the need for preprinted forms.
- Use existing scanners and printers to print and grade tests.
- One solution supports online and paper tests.



## It's Easy to Learn, Use, and Deploy

- Simple solution for online and printed tests, exams, quizzes, and other assessments.
- No installation or IT required; easy, school-wide deployments.
- Accessible from any modern web browser (Windows® PC, Mac®, smartphone, or tablet).



## Enable Advanced Testing and Analysis

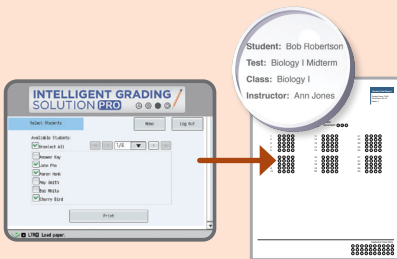
- Include open response areas for essays, short answers, and graphing.
- Include math questions with grids for entering numbers, decimals, and fractions.
- Show your work and other handwritten answers.
- Utilize multiple test versions to curtail cheating.
- Dive deeper into test results to see individual or class performance on specific subject areas.

# How It Works



1

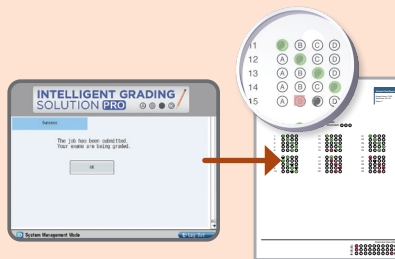
## CREATE A TEST



After signing in at the device, create a blank test sheet or select a template from the interface of the Canon imageRUNNER ADVANCE device, and print it. Exams can be printed with student names, number of questions, and number of answer choices.

2

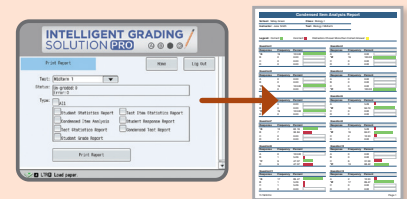
## GRADE A TEST



Administer the test, and scan the results and answer key into the imageRUNNER ADVANCE device. The embedded cloud-based application quickly grades the test sheets—marked in pen or pencil—and sends the results back to the device.

3

## PRINT REPORTS



You can select one or more output reports, depending on how you would prefer to review the data. For your convenience, you have the option of either printing the reports or emailing them to yourself.

# Features

IGS Pro—available via cloud—offers the following features to help make your test grading process simple and affordable.

## Test Answer Sheets

- Use plain-paper answer sheets (those printed on regular printer/copy paper).
- Build and distribute online tests.
- Create your own answer sheets tailored to your tests or simply use the built-in standard test forms (25, 50, 100, or 200 questions).
- Create multiple choice questions with varying answer choices, including A-E, 1-5, alternating answer choices, true/false, and more.
- Add question text and answer labels.
- Create math grids (numbers, fractions, decimals) for numeric answers.
- Include open-response points for essays, short answer, and other write-in questions.
- Import rosters and merge student, teacher, class, and test information onto printed answer sheets for easy identification and tracking.
- Choose no-roster classes, where an instructor can grade student test forms without first having to specify a class roster. In this mode, IGS Pro clips the students' handwritten names from the answer sheets and displays them on the reports.
- Choose generic answer sheets with bubble-in student ID grids for larger classes.
- Include school logo on test answer sheets.
- Create multiple test versions (up to five versions of the same test, each with questions in a different order).
- Print an Answer Key for reference (see option under the "Action" menu to the right of the answer key on the "Test Details" page).
- An answer key is no longer required before sending email invitations to an online test.

## Online Testing

- **Refreshed Class Page:** The new class page has a cleaner look, allowing for more functionality. By expanding the action menu, users can simply click the class name to dive into the class.
- **Reorganized Test Details Page:** Users can now find the "Grade and Reports" button at the top along with the "Export" and "Delete" buttons, which are at the top of the table. The action menu (three dots) to the right of each student can be used to access individual student actions.
- **Online Progress:** On the "Test Details" screen, users will see an "Online Progress" tab. This can be used to see whether students started or submitted a test, how much time they've spent on it, and how far they've progressed.
- **Online Test Navigation:** When students are taking an online test, they can see where they're in the test, along with a timer. A notification is sent if they submit the test without answering all the questions.
- **Incomplete Online Test Submissions:** Users can download incomplete test submissions. While the application auto-submits tests if there's a time limit, sometimes students begin a test and close the browser, never to return. These tests can be downloaded from the "Test Details" screen.
- **Online Test Storage:** If a student starts and stops a test, even on a different device, their submitted questions will still be there when they resume.
- **Restricting Navigation in Online Tests:** Users have the option to restrict the students' ability to go back to previously viewed questions when taking an online test.

## Portability

- Export raw data to several formats (CSV, Excel, Access, and more) for easy import into other analysis applications.
- Integrate with Canvas, D2L, and Blackboard to send grades to your gradebook seamlessly. You can just as easily export grades to Canvas, CSV, and other formats, sending them to gradebooks, student management systems, and learning management systems.



# Features

## Reporting

- Produces the following grade reports:
  - **Test Analysis Report** provides overall information about the test, including high/low scores, item discrimination, and easiest/hardest questions.
  - **Student Statistics Report** shows scores for all students in the class, including a breakdown on multiple choice vs. open-ended questions.
  - **Student Response Report** allows viewing of both student and question performance in one graphical chart.
  - **Class Learning Objectives Report** details scores on learning objectives used in the answer key.
  - **Student Achievement Report** shows student performance based on the test benchmark.
  - **Student Grade Report** gives back to each student or parent.
  - **Student Test Report** contains the student's scanned image, annotated with grade information.
  - **Item Analysis Report** allows viewing of question performance.
  - **Condensed Test Report** shows a combination of descriptive statistics and question performance.
  - **Test Statistics Report** allows viewing of descriptive statistics on the overall test.
  - **Test Item Statistics Report** for viewing descriptive statistics for each question, including Point-Biserial Correlation.
  - **Sorting Students Report** sorts students' names when emailing reports to them (based on the application sort settings under "Settings").
  - **Email Notices for Account Limits Report** will send an email to the account administrator and user (if applicable) advising when an account limit has been reached, such as when trying to add an instructor after you've reached your limit of 10.
- Reports saved automatically as PDF files.
- Email reports to yourself or students.
- Include school logo on reports.

## Advanced Grading

- Allows more than one correct response for each question.
- Set question points for correct, incorrect, and blank answers.
- Set a test benchmark to quickly see which students do—and do not—achieve the desired score.
- Provides scores on specific learning objectives or standards in addition to the overall test.
- Utilize extra credit.
- Grades multiple versions of a test.
- Check if learning objectives have been achieved via colors shown on the Test Details page: red = below benchmark; green = benchmark achieved.

## Grading Tests

- Scan tests with an image scanner or MFD.
  - **Cloud Solution:** Upload completed test images or email images directly from your MFD or scanner to the cloud for processing.
- Reads TIFF, PDF, PNG, and JPEG images.
- Automatically grades online tests upon submission.
- Processes fillable PDF answer sheets so tests don't need to be scanned.
- Allows for on-screen exception cleaning (for blank or multiple responses).
- Allows hand-entry of test responses if sheets can't be scanned.
- Tracks who has, and has not, taken a test on a class basis when using a class roster.

## Learning Management System (LMS)

- **Auto Sync:** Connected to an LMS from Intelligent Grading Solution, users can automatically sync test scores to your LMS.
- **LMS and Standard Answer Sheets:** Designing a test for your matching quiz in your connected LMS? Then choose one of Intelligent Grading Solutions' standard answer sheets to match with your test instead of designing one from scratch.
- **LMS Class Restriction:** Users can opt to restrict manual class creation in the IGS when the account is linked to an LMS.

# Solution Benefits



- Print test answer sheets on any imageRUNNER ADVANCE device.
- Scan completed answer sheets using any imaging device or MFP.
- Email images directly from a supported device to the cloud.
- Support for online testing.
- Cloud-based solution—no servers or software to install.
- Teachers can use standard answer sheets or build custom tests.
- Extensive built-in reporting.
- Print reports from your imageRUNNER ADVANCE device.

Tests can be a stressful event for teachers as well as students. Through using the Intelligent Grading Solution Pro with imageRUNNER ADVANCE devices, teachers are empowered with the ability to create tests and monitor progress in an efficient way so they can focus on student and class development.



**Canon**

Canon and imageRUNNER are registered trademarks of Canon Inc. in the United States and may also be registered trademarks or trademarks in other countries. All other referenced product names and marks are trademarks of their respective owners. Check with your Canon Authorized Dealer for additional details, restrictions, and requirements. Specifications and availability subject to change without notice. Not responsible for typographical errors.  
©2023 Canon U.S.A., Inc. All rights reserved.

23-0497-7976