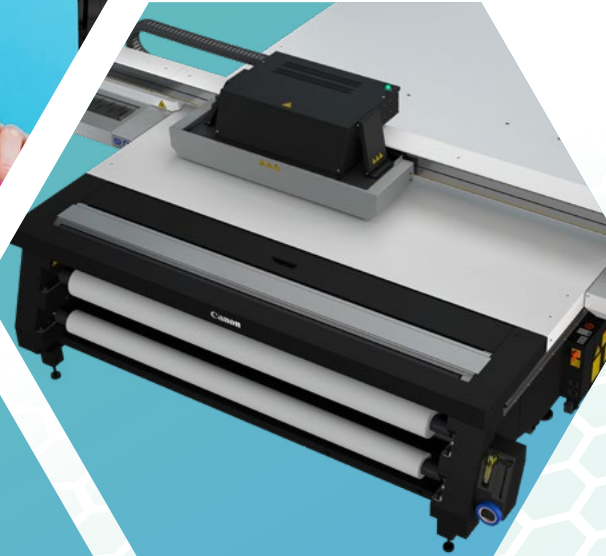


Canon



LARGE-FORMAT PRINTING SOLUTIONS

**HELPING YOU REACH
NEW HEIGHTS**





A FAMILY OF SOLUTIONS

LARGE-FORMAT PRINTING SOLUTIONS. CANON INNOVATION IN EVERY PRINT.

As a worldwide innovation leader for more than 80 years, Canon has a legacy of cultivating breakthrough technologies. Its expertise in the areas of science, engineering, and manufacturing has produced world-leading imaging solutions and consistent placement among the top U.S. patent holders of the decade.

This corporate culture of technological innovation drives the company to produce an ever-expanding range of large-format printing solutions, each one carefully crafted to address specific customer needs in each market segment served. As a result, the large-format family has grown into a broad array of solutions that offer Canon's customers more features, functions, and options than ever before.

Today, the line of Canon large-format printers is at the forefront of the industry. Canon's award-winning printers are an ideal platform for innovation. Specialized customer solutions and applications range from fine art and photography and textiles, to production printing, technical documents, and general purpose poster-making.

You can extend your application capabilities even further with incredible leading technologies such as varnish, white ink, and raised texture printing, and complement with smart cutting and finishing accessories. In fact, your potential to profit from creating high-value output is limited only by your imagination.

The following devices are shown above, from left to right and top to bottom:

Colorado M-series; colorWAVE T65*; plotWAVE T30**; imagePROGRAF TZ-32000 MFP Z36; Arizona 2300 series GTF***; imagePROGRAF PRO-6600; imagePROGRAF TM-355; imagePROGRAF TX-3200 MFP Z36; imagePROGRAF GP-4600S; imagePROGRAF GP-4000 with optional MFR

**Shown with optional Scanner Express and Operator Attention Light.*

***Shown with optional Operator Attention Light.*

****Shown with optional Roll Media (RMO).*

TABLE OF CONTENTS

GRAPHIC DESIGN SOLUTIONS

ARIZONA SERIES	5
COLORADO M-SERIES	6
COLORADO XL-SERIES	7
imagePROGRAF GP SERIES	8 - 9
imagePROGRAF GP S SERIES	10

PHOTO & FINE ART SOLUTIONS

imagePROGRAF PRO SERIES	11
-------------------------------	----

PRODUCTION CAD / TECHNICAL DOCUMENT SOLUTIONS

colorWAVE SERIES	12
plotWAVE SERIES	13
imagePROGRAF TZ SERIES	14

MID VOLUME / GENERAL OFFICE SOLUTIONS

imagePROGRAF TX SERIES	15
------------------------------	----

LOW - MID VOLUME / GENERAL OFFICE SOLUTIONS

imagePROGRAF TM SERIES	16
------------------------------	----

LARGE-FORMAT MEDIA

imagePROGRAF	17
--------------------	----

QR CODE INDEX

SCAN AND EXPLORE	18
------------------------	----

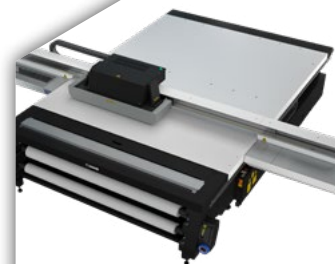
GRAPHIC DESIGN SOLUTIONS

ARIZONA SERIES



Canon Arizona UV flatbed printers are all based on a true, stationary platform delivering exceptional image quality and application versatility. These printers can print directly onto rigid substrates and are also capable of printing on roll-fed media when equipped with the Roll Media Option. The prints are suitable for indoor and outdoor use and the inks are GREENGUARD Gold certified. Arizona series printers give professional print service providers the ability to offer premium printing services.

- True stationary flatbed versatility and performance at an exceptional price
- FLXflow* Hold to help reduce the need for taping and masking
- Optional FLXflow* Float for easier handling of substrates
- 4-, 5-, 6-, or 8-channel models with white, varnish, light cyan, and light magenta inks
- Roll Media Option available for true roll-to-roll capability
- VariaDot imaging technology for near-photographic results
- Instant switching between flatbed printing and optional roll-to-roll
- ONYX Thrive enables a true end-to-end PDF workflow from digital file submission through color management, printing, and cutting



Arizona 2300 series with RMO



Arizona 135 GT with RMO

MODEL

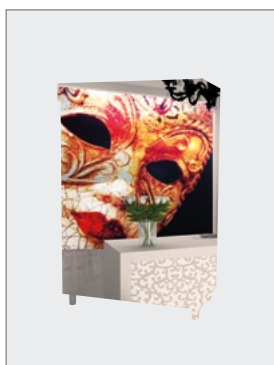
- 2300 Series XTF**
- 2300 Series GTF**
- 1300 Series GTF**
- 1300 Series XTF**
- 1300 Series GT**
- 135 GT**

MAXIMUM SIZE

- 98.4" x 121.3" x 2" flatbed, 86.6" wide roll
- 49.2" x 98.4" x 2" flatbed, 86.6" wide roll
- 49.2" x 98.4" x 2" flatbed, 86.6" wide roll
- 121.3" x 98.4" x 2" flatbed, 86.6" wide roll
- 49.2" x 98.4" x 2" flatbed, 86.6" wide roll
- 49.2" x 98.4" x 2" flatbed, 86.6" wide roll

Ink sets depend upon configuration.

**Only available with Arizona 1300 and 2300.*





GRAPHIC DESIGN SOLUTIONS

COLORADO M-SERIES

Colorado series roll-to-roll printers are designed to deliver accurate, repeatable prints at high print speeds. With FLXfinish+, the Colorado printer series can print matte and gloss on one print, in one pass, to create beautiful and striking output! The newest member of the family, the Colorado M-series, was designed to allow you to say “yes” to more jobs, create stunning applications, and reduce turnaround times. Its modular architecture allows it to grow with your business, and is designed for low cost of ownership.

- Fastest 64” production printer in its class to help reduce production times
- Optional UVgel white ink* helps reduce hassles related to printing with white ink
- Easily add speed*, dual-roll capabilities*, and other features as your business grows
- Use FLXfinish+* to print matte and gloss on the same print without varnish
- Create micro textures on prints with FLXture*
- Lower ink usage can help lower production costs
- Unattended production helps enable labor savings
- Highly accurate color and geometric consistency help to reduce rework and waste
- Jumbo Roll and Wallpaper Factory capabilities help create labor savings
- ONYX Thrive enables a true end-to-end PDF workflow from digital file submission through color management, printing, and cutting



Colorado M-series



White Ink Configuration

MODEL

COLORADO M3

COLORADO M5

MAXIMUM SIZE

64” Wide

64” Wide

INKS

4-Color – CMYK UVgel with optional white ink

4-Color – CMYK UVgel with optional white ink

**Optional feature*



GRAPHIC DESIGN SOLUTIONS

COLORADO XL-SERIES



The Colorado XL-series 11-foot printers offer stunning roll-to-roll and rigid prints with Canon's advanced UVgel technology. The XL-series combines speed, vibrant color, and media versatility—ideal for bold graphics, signage, and creative applications—all from one powerful device.

- Modular Design: Easily upgrade features to extend your investment.
- UVgel 860 Inks: Durable, low-odor inks with a wide color gamut for consistent results.
- Optional UVgel White Ink*: Help reduce the hassles related to printing with white ink.
- Next-Gen 850 UVgel Printheads: Dual-channel heads print four colors with two printheads; optional third printhead for UVgel white ink.*
- TRIdrive Vacuum Belt: Uses a three-roller system that helps maintain precise media tension and alignment.
- DynamicMotion Control: Captures a snapshot of the media surface and adjusts printhead movement in real time for accurate output.
- FullBeam Curing: Delivers uniform curing across the entire print width.
- Gloss or Matte Print Finishes: Expands creative possibilities.
- FLXture Technology: Adds micro textures for unique effects.*



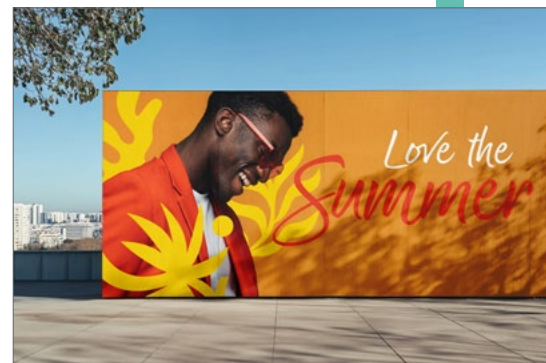
Colorado XL7R



Colorado XL7H

MODEL	TYPE	MAXIMUM PRINT SPEED	INKS
Colorado XL7R	Roll-to-Roll	2,271 ft ² /hr	4-Color – CMYK UVgel with optional white ink
Colorado XL7H	Roll-to-Roll/ Rigid Hybrid	2,271 ft ² /hr	4-Color – CMYK UVgel with optional white ink

*Optional feature





GRAPHIC DESIGN SOLUTIONS

imagePROGRAF GP SERIES

The imagePROGRAF GP series printers are the world's first large-format printers with aqueous pigment Fluorescent Pink ink*, equipped with Canon's unique Radiant Infusion which layers the Fluorescent Pink ink with other inks on the paper surface during printing to create bright and soft color reproduction.

The 44" GP-4000 and 24" GP-2000 are 10-color plus Fluorescent Pink ink large-format printers. With the Red, Orange, Green, Violet, and Fluorescent Pink inks, the imagePROGRAF GP-2000 printer has the largest color gamut of any imagePROGRAF printer to date.

- imagePROGRAF GP series, the world's first* aqueous inkjet models to include Fluorescent Pink ink
- The world's first PANTONE® calibrated printers for PANTONE® PASTELS & NEONS GUIDE coated
- Intelligent Media Handling
- Built-in color calibration



GP-4000



GP-2000

MODEL

GP-4000

GP-2000

MAXIMUM SIZE

44" Wide

24" Wide

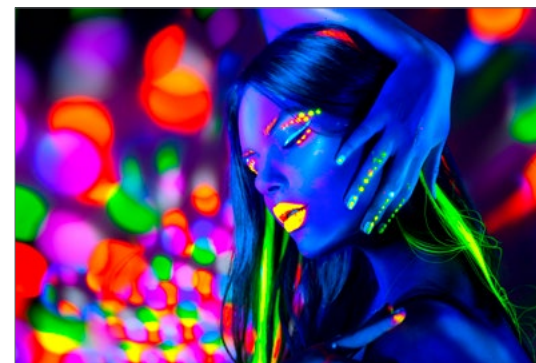
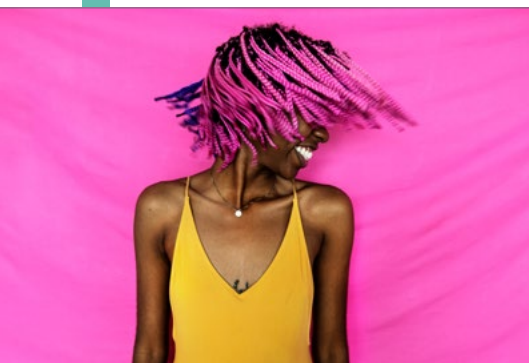
INKS

10-Color + Fluorescent Pink

10-Color + Fluorescent Pink

**In major aqueous pigment, large-format inkjet printer manufacturers (excluding sublimation transfer systems). As of 09/27/2021 (Canon research).*

PANTONE® is a trademark or registered trademark of PANTONE® LLC in the United States and/or other countries. As of September 27, 2021, according to professional services performed by PANTONE® under License Agreement between Canon, Inc. and PANTONE® LLC. PANTONE® PASTELS & NEONS GUIDE Coated color gamut coverage rate is 97% for GP-4000/GP-2000 when using Photo Paper Pro Premium Platinum with imagePROGRAF printer driver at [Poster/Photo (Fluorescent)] [Highest] (600 dpi). PANTONE® Colors generated may not match PANTONE®-identified standards. Consult current PANTONE® Publications for accurate color.



GRAPHIC DESIGN SOLUTIONS

imagePROGRAF GP SERIES



The 36" imagePROGRAF GP-300 and 24" GP-200 are 5-color (MBK, BK, C, M, Y) plus Fluorescent Pink ink large-format printers. These models are ideal for supporting in-house production of large-format prints with increased appeal and visibility in various industries such as retail stores, restaurants, government offices, schools, and general companies.

- The world's first PANTONE® calibrated printers for PANTONE® PASTELS & NEONS GUIDE coated which includes fluorescent and pastel colors
- Direct USB drive printing
- Space-saving design
- Secure print features



GP-300



GP-200

MODEL

GP-300

GP-200

MAXIMUM SIZE

36" Wide

24" Wide

INKS

5-Color + Fluorescent Pink

5-Color + Fluorescent Pink





GRAPHIC DESIGN SOLUTIONS

imagePROGRAF GP S SERIES

The imagePROGRAF GP S Series with orange ink is designed to achieve bold and robust output. These powerful production printing systems, with the 7-Color LUCIA PRO II Ink System, are built for bringing production signage, advertisements, and other output to the next level.

- LUCIA PRO II Seven-Color Ink System
- 96% of PANTONE™ Formula Guide Solid Coated*
- L-COA PRO high-speed image processing engine can process high resolution and high volume data at high speed
- Ink Ejection Status Monitoring
- Intelligent Media Handling
- Superb Scratch Resistance



GP-6600S

MODEL

- GP-6600S
- GP-4600S
- GP-2600S

MAXIMUM SIZE

- 60" Wide
- 44" Wide
- 24" Wide

INKS

- 7-Color
- 7-Color
- 7-Color

*96% when using Premium Semi-Gloss Paper 2 with imagePROGRAF printer driver at [High] [Color Correction Off].



GP-4600S



PHOTO & FINE ART SOLUTIONS

imagePROGRAF PRO SERIES



Professional photographers, graphic designers, and more desire a wide color gamut that accurately reproduces even the most difficult colors. From stunning black-and-white prints with deep blacks, detailed gradations to extraordinary color, the Canon imagePROGRAF PRO Series is designed to achieve it all.

- Archival LUCIA PRO II Ink
- High light resistant for long-term preservation of inks
- Improved black density with a wider dark-color gamut range
- Superb scratch resistance
- Color Calibration

MODEL

PRO-6600

PRO-4600

PRO-2600

MAXIMUM SIZE

60" Wide

44" Wide

24" Wide

INKS

11-Color + Chroma Optimizer

11-Color + Chroma Optimizer

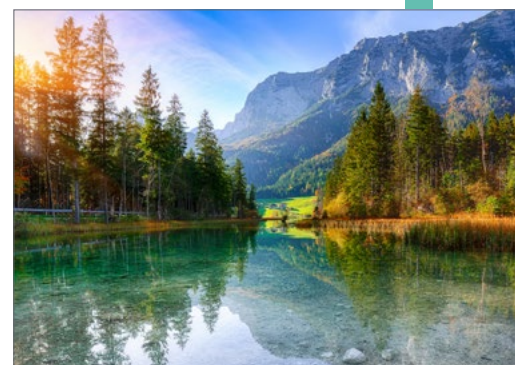
11-Color + Chroma Optimizer



PRO-6600



PRO-2600





PRODUCTION CAD / TECHNICAL DOCUMENT SOLUTIONS

colorWAVE SERIES

Push the boundaries of your large-format printing with the colorWAVE series, a high-performance color printer with optional scanning and copying capabilities in one convenient footprint. Gain a competitive edge with distinctive high-quality wide format drawings and presentations without the need for expensive coated paper. With its intuitive design, the colorWAVE series color printer is designed for easy end-user walk-up capability using ClearConnect controller software.



colorWAVE
T60



colorWAVE
T65

- The prints are instantly dry with the patented CrystalPoint technology
- Designed to help ensure robust, waterfast prints with sharp lines, high readability of fine details, and smooth, even area fills
- ImageLogic Technology designed for the Scanner Express to transform imperfect originals into professional-grade scans and copies
- Built-in security features
- Integrated job submission software
- 2 - 6 rolls capacity
- Up to 25,000 square feet per month
- Up to 4 D-size prints per minute*

MODEL

colorWAVE T60
colorWAVE T65

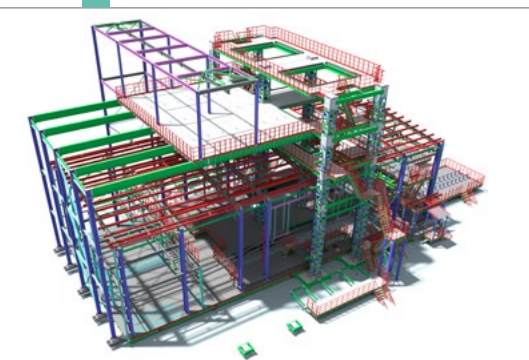
MAXIMUM SIZE

42" Wide
42" Wide

TONERS

4-Colors
4-Colors

*D-size (34 x 22 in) / A1-size (841 x 594 mm).



PRODUCTION CAD / TECHNICAL DOCUMENT SOLUTIONS

plotWAVE SERIES



The plotWAVE series is ideal for decentralized low-volume to mid-volume walk-up printing environments. These devices are utilized by workgroups of monochrome CAD professionals who require both productivity and ease of use, leveraging the latest controller hardware running Windows 10 IoT Enterprise LTSC 2021 (64-bit) operating system, and new standard security features. The Scanner Express IV option integrates directly on top of the printer for a Single Footprint MFP configuration.

- Radiant Fusing Technology: Eco-friendly fusing method, providing instant-on printer availability with no warm-up time
- ImageLogic Technology designed for the Scanner Express to transform imperfect originals into professional-grade scans and copies
- Integrated job submission software
- Built-in security features
- Up to 6 rolls capacity
- Up to 60,000 square feet per month
- Up to 10 D-size prints per minute*



**plotWAVE
T30/T35**



**plotWAVE T50/T55
with Scanner
Express IV**

MODEL

plotWAVE T30
plotWAVE T35
plotWAVE T50
plotWAVE T55
plotWAVE T75

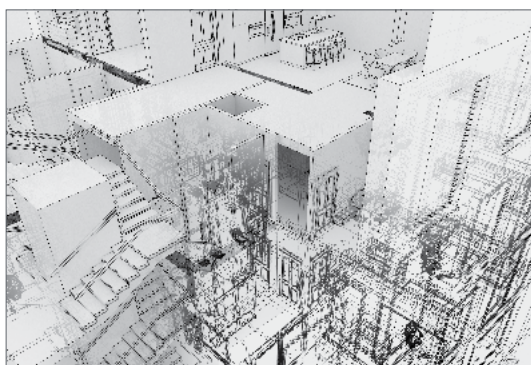
MAXIMUM SIZE

36" Wide
 36" Wide
 36" Wide
 36" Wide
 36" Wide

TONERS

Monochrome
 Monochrome
 Monochrome
 Monochrome
 Monochrome

*D-size (34 x 22 in) / A1-size (841 x 594 mm).





PRODUCTION CAD / TECHNICAL DOCUMENT SOLUTIONS

imagePROGRAF TZ SERIES

The imagePROGRAF TZ Series seizes and expands the production aqueous inkjet market with its ability to print black-and-white line drawings and full-color posters on multiple media substrates that LED devices are unable to support. The hybrid model is uniquely qualified to capture market share where overall print volumes are trending lower and the need to get more out of a machine is a business necessity. The MFP includes the Z36 scanner and intuitive system controller, making it a powerful addition to Canon's portfolio of large-format printers, perfect for scanning maps, drawings, and renderings.

- 5-Color LUCIA TD pigment ink
- Intelligent Media Handling that is 34% faster than previous models*
- Up to 4 D-size prints per minute**
- Up to 243 D-size prints per minute**
- Integrated 100-print capacity top stacker
- Dual-roll Intelligent Media Handling System that detects media type, width, and length
- Scan monochrome drawings at up to 13" per second and color up to 6" per second***



TZ-32000



**TZ-32000
MFP Z36**

MODEL

TZ-32000

TZ-32000 MFP Z36

MAXIMUM SIZE

36" Wide

36" Wide

INKS

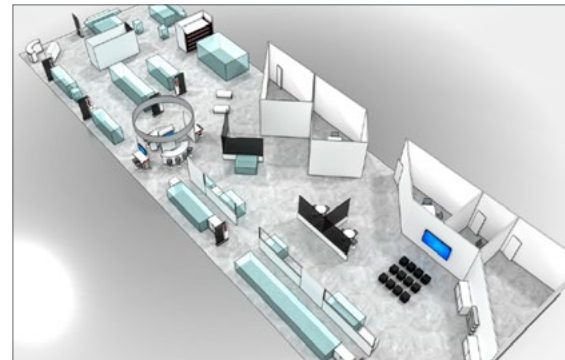
5-Color

5-Color

**Time from when roll paper (24") is loaded in the feed section until paper feed is completed.*

***Plain paper, fast (Q5) mode.*

****The scan rate is proportional across the full range of resolutions supported by the scanner. Actual scan times will depend on the host system performance. Quoted top speeds may be limited by the effective bandwidth of the USB 2 and is not guaranteed for all media types.*



MID VOLUME / GENERAL OFFICE SOLUTIONS

imagePROGRAF TX SERIES



The imagePROGRAF TX Series large-format printing system is a platform designed to help meet the evolving needs of your customers. Canon innovations and a full complement of solutions help improve productivity, maximize utilization, facilitate access, and enhance security features—all in a seamless system that puts you at the forefront of the large-format printing industry.

- 5-Color LUCIA TD pigment ink
- Intelligent Media Handling that is 33% faster than previous models[■]
- Print speeds of up to 3.3 D-size prints per minute*
- Wi-Fi[®] ready** and cloud-enabled***
- Scan-to-Copy/File/Share capability
- Scan monochrome drawings at up to 13" per second and color up to 6" per second****



TX-4200



TX-3200
MFP Z36

MODEL

TX-4200

TX-4200 MFP Z36

TX-3200

TX-3200 MFP Z36

MAXIMUM SIZE

44" Wide

44" Wide

36" Wide

36" Wide

INKS

5-Color

5-Color

5-Color

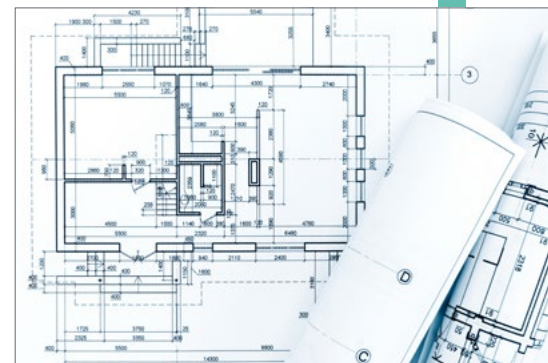
5-Color

[■]Time from when roll paper is placed in the main unit feed section to when the printer is ready for printing
*Plain paper, fast (Q5) mode.

**Wireless printing requires a working network with wireless 802.11b/g or 802.11n capability. Wireless performance may vary based on terrain and distance between the printer and wireless network clients. Wi-Fi is a registered trademark of the Wi-Fi Alliance.

***Subscription to a third-party cloud service is required for certain features. Subject to third-party cloud service provider's terms and conditions. Specifications and availability subject to change without notice.

****The scan rate is proportional across the full range of resolutions supported by the scanner. Actual scan times will depend on the host system performance. Quoted top speeds may be limited by the effective bandwidth of the USB 2 and is not guaranteed for all media types.





LOW - MID VOLUME / GENERAL OFFICE SOLUTIONS

imagePROGRAFTM SERIES

The imagePROGRAFTM Series offers versatility and productivity to help meet the growing demands of today's marketplace. With a range of models, this series allows you to easily produce CAD documents, posters, banners, flyers, and more.

- 5-Color LUCIA TD pigment ink
- Speeds of up to 3.2 D-size prints per minute*
- Automatic Paper Detection
- Color Calibration System
- Flat-top Design with 4.3" Tilt Screen
- Creative and Workflow Solutions Available
- Multifunction Solutions Available



**TM-350
MFP Lm36**



TM-250

MODEL

- TM-355 MFP Z36**
- TM-355**
- TM-350 MFP Z36**
- TM-350 MFP Lm36**
- TM-350**
- TM-340 MFP Lm36**
- TM-340**
- TM-250 MFP Lm24**
- TM-250**
- TM-240 MFP Lm24**
- TM-240**

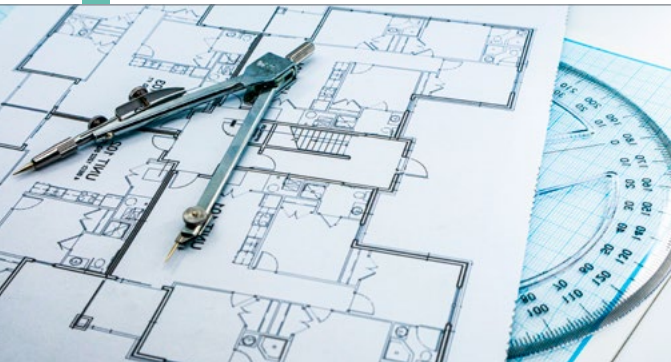
MAXIMUM SIZE

- 36" Wide
- 36" Wide
- 36" Wide
- 36" Wide
- 36" Wide
- 36" Wide
- 36" Wide
- 24" Wide
- 24" Wide
- 24" Wide
- 24" Wide

INKS

- 5-Color
- 5-Color
- 5-Color
- 5-Color
- 5-Color
- 5-Color
- 5-Color
- 5-Color
- 5-Color
- 5-Color
- 5-Color

**For an Arch D Portrait Size CAD Drawing*



imagePROGRAF Large-Format Media



Canon media delivers consistently superb image quality and product performance. Rigorous testing helps ensure compatibility with imagePROGRAF printers to provide the best image quality possible.

Canon's extensive media portfolio helps meet the demands of any project—from drafting technical designs and producing point-of-purchase displays to creating exquisite photographic and fine art reproductions.

PHOTOGRAPHIC

Canon's extensive range of high-end photographic papers is designed to make accurate, high-definition reproduction effortless. From professional portraits to vibrant glossy prints, these premium media options bring digital art to life.

FINE ART

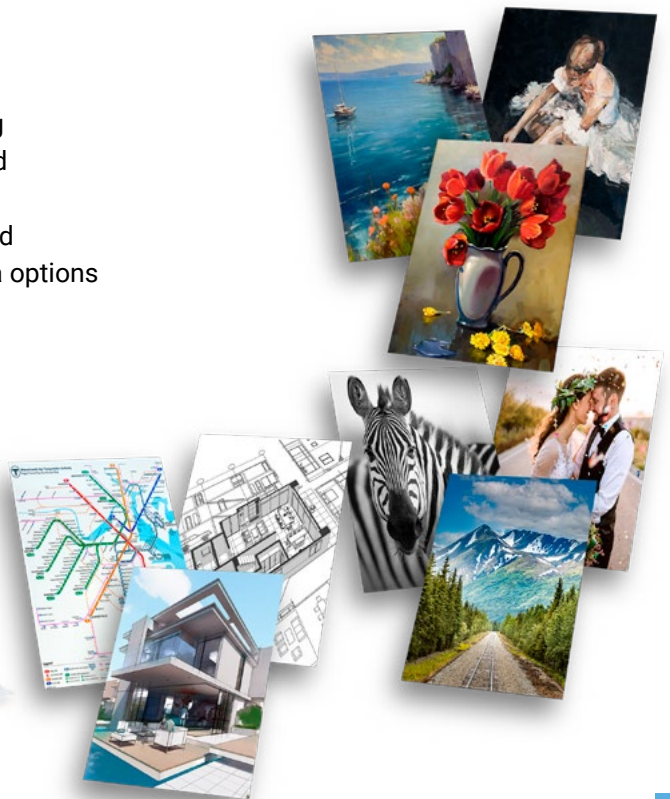
Canon's Fine Art Media delivers superb reproduction for both digital art and traditional paintings. With options ranging from etched textures and classic canvas to durable water-resistant styles, there is a professional solution for every creative vision.

SIGN/BANNER/DISPLAY MEDIA

Eye-catching signs, bulletins, and announcements are easy to create with Canon large-format printers. To suit every application, our sign and banner media are tear-resistant and offer a variety of special features, including adhesive backing, vinyl coating, water resistant, and repositionable.

COATED/BOND

Canon large-format printers are the premier choice for rendering high-precision blueprints, maps, schedules, and sketches. Suited for engineers, architects, and CAD/GIS professionals, Canon's lineup includes a versatile range of durable, cost-effective coated papers. Available in 150 ft., 300 ft., and 500 ft. rolls, these media options are ideal for both daily drafts and technical applications.



SCAN AND EXPLORE



PosterArtist

imagePROGRAF PRO Print Sample Page



imagePROGRAF "How-To" Videos Playlist

imagePROGRAF Product Videos Playlist



**Canon Colorado, Arizona, Texas,
plotWAVE, and colorWAVE Large-Format
Printer Series Video Playlist**

Software & Drivers



Large Format App

**eCarePAK Extended Warranty for the
imagePROGRAF Series of Large-Format Printers**







usa.canon.com/largeformat

The following devices are shown on the front cover:

colorWAVE T65 6-roll (shown with optional Scanner Express and Operator Attention Light), imagePROGRAF TZ-32000 MFP Z36, Arizona 2300 series, Colorado M-series, imagePROGRAF GP-4000 with optional MFR, and imagePROGRAF TM-355

As an ENERGY STAR® Partner, Canon U.S.A., Inc. has qualified these models as meeting the ENERGY STAR energy efficiency criteria through an EPA recognized certification body. ENERGY STAR and the ENERGY STAR mark are registered trademarks owned by the U.S. Environmental Protection Agency. Canon and imagePROGRAF are registered trademarks of Canon Inc. in the United States and may also be registered trademarks or trademarks in other countries. Microsoft, Office, Windows, Outlook, Word, Excel, and PowerPoint are either registered trademarks or trademarks of Microsoft Corporation in the United States and/or other countries. Wi-Fi is a registered trademark of the Wi-Fi Alliance. Autodesk, the Autodesk logo, and AutoCAD are registered trademarks or trademarks of Autodesk, Inc., and/or its subsidiaries and/or affiliates in the U.S.A. and/or other countries. All other referenced product names and marks are trademarks of their respective owners. Certain printer output and screen images are simulated. Canon products offer certain security features, yet many variables can impact the security of your devices and data. Canon does not warrant that use of its features will prevent security issues. Nothing herein should be construed as legal or regulatory advice concerning applicable laws; customers must have their own qualified counsel determine the feasibility of a solution as it relates to regulatory and statutory compliance. Some security features may impact functionality/performance; you may want to test these settings in your environment. Subscription to a third-party cloud service is required for certain features. Subject to third-party cloud service provider's terms and conditions. Specifications and availability subject to change without notice. Not responsible for typographical errors.
©2026 Canon U.S.A., Inc. All rights reserved.