

## **SITEAUDIT ONSITE V7**

Enabling Managed  
Print Services



**Netaphor SiteAudit™**  
Solutions for  
Auditing and  
Fleet Management



# DRIVING MANAGED PRINT SERVICES

SiteAudit OnSite v7 brings auditing and fleet management to a new level. By leveraging its data collection power, platform integration, and visualization tools, this platform enables more analytical and proactive fleet services to partners and end customers.

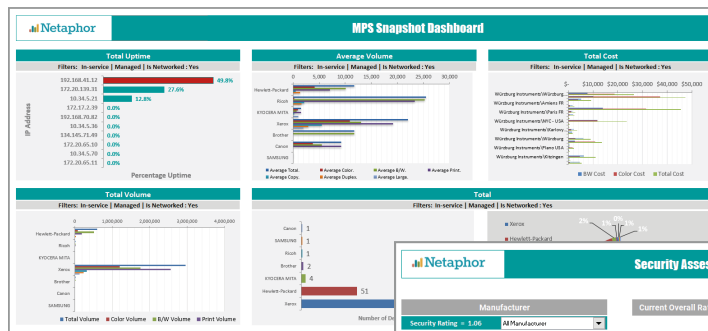
OnSite v7 delivers on optimized print infrastructures using advanced fleet analytics and proactive services that result in long-term customer relationships.

## Fleet Audit and Management

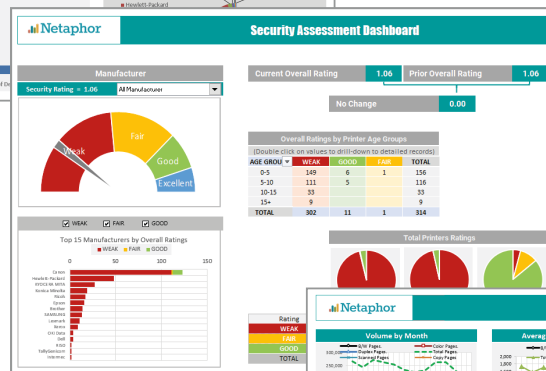
- Metering and analysis
- Just-in-time supplies alerting
- Move, add, and change
- Fleet health metrics
- Cost management
- Map printer assets

# DASHBOARDS

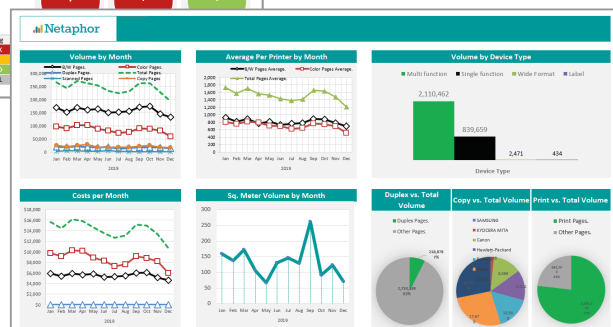
## MPS Snapshot



## Security Dashboard



## Volume Dashboard



Use the Dashboards to manage critical issues and trends.

## Key Features

- Data Stays Inside the Firewall
- Mixed Fleet Management
- Metering and Supplies Tracking
- Fleet Analytics and Reporting
- Security Reporting and Alerting
- Cost Management
- Sustainability Reporting
- Printer Mapping
- ServiceNow Integration
- Asset Tool Setup and Customization

## Key Benefits

- Imperceptible network traffic
- Handles any billing or volume analysis
- Just-in-time ordering, yields for profit analysis
- Reduces service costs, increases customer satisfaction
- Most accurate inventory management
- Widest array of reporting options
- Alerts priorities that optimize fleet performance

SiteAudit Visualizer - Inventory Explorer

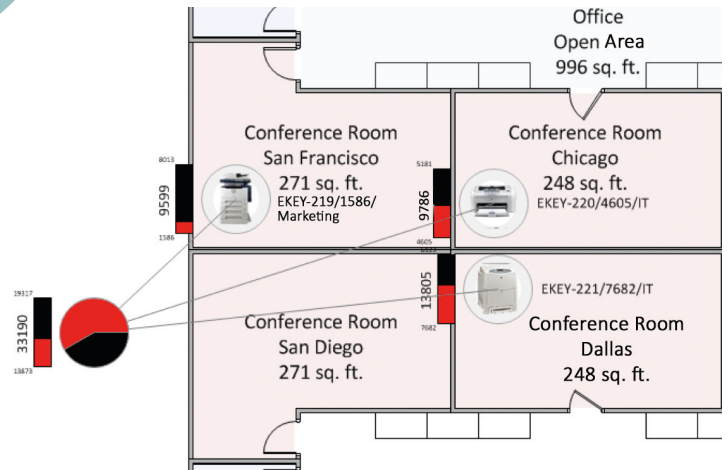
Filter Editor

Drag a column header here to group by that column

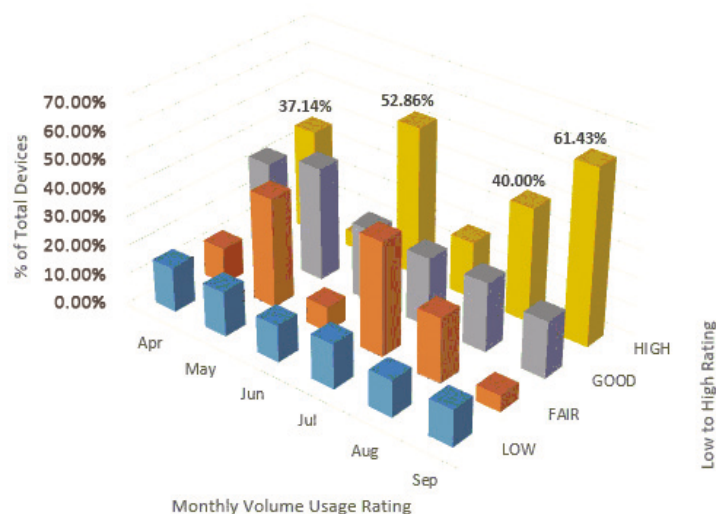
IP Address	Connection	Manufacturer	Model	Serial #	Output	Hardware Address
10.0.1.9	Networked	Canon	Canon R1025	DRL57475	B/N	00:1E:8F:D8:C8:E7
10.0.33.10	Networked	Canon	Canon R5050 54.03	DZA11197	B/N	00:00:85:80:4C:7E
10.0.1.15	Networked	Canon	Canon R-ADV C3035 60.39	GNV55483	Color	00:1E:8F:33:30:2C
10.0.1.16	Networked	Canon	Canon R3245 42.01	DHK18386	B/N	00:00:85:0F:12:22
10.0.106.19	Networked	Canon	Canon R3245 27.01	DHK02574	B/N	00:00:85:06:4C:7B
10.0.206.28	Networked	Canon	Canon R3245 27.01	DHK02586	B/N	00:00:85:0A:EE:7C
10.0.106.34	Networked	Canon	Canon R3245 27.01	DHK02581	B/N	00:00:85:06:4C:85
10.0.39.41	Networked	Canon	Canon R-ADV C3051 56.01	GQM53674	Color	00:1E:8F:32:F8:6F
10.0.27.50	Networked	Canon	Canon R-ADV C3030 61.05	GNV57702	Color	00:1E:8F:30:18:E1
10.0.206.63	Networked	Canon	Canon R3245 27.01	DHK02564	B/N	00:00:85:08:00:9C
10.0.15.81	Networked	Canon	Canon R3235 27.01	DFW03251	B/N	00:00:85:0A:EE:03
10.0.17.81	Networked	Canon	Canon R3235 27.01	DFW03310	B/N	00:00:85:06:01:FC
10.0.23.84	Networked	Canon	Canon R-ADV C3030 61.05	GNV57656	Color	00:1E:8F:3F:8F:2E
10.0.3.85	Networked	Canon	Canon P980005 1.47	APF02515	Color	00:00:85:84:3C:84
10.0.11.85	Networked	Canon	Canon R5055 43.02	OXT01549	B/N	00:00:85:8B:76:96
10.0.35.87	Networked	Canon	Canon R-ADV C3035 37.03	GNV10624	Color	00:1E:8F:2E:FE:0A
10.0.1.90	Networked	Canon	Canon R1025	DRL58468	B/N	00:1E:8F:D8:E2:03
10.0.106.97	Networked	Canon	Canon R C4080 88.03	TQW03043	Color	00:00:85:4B:6F:F8
10.0.106.99	Networked	Canon	Canon R C4080 88.03	TQW03070	Color	00:00:85:4B:70:15
10.0.21.100	Networked	Canon	Canon R-ADV C3035 61.05	GNV57004	Color	00:1E:8F:31:20:2A
10.0.19.100	Networked	Canon	Canon R-ADV C3240 13.01	JRA02292	Color	88:87:17:7E:56:43
10.0.106.100	Networked	Canon	Canon R CS185 88.03	MERO7612	Color	00:00:85:4B:8F:07
10.0.106.100	Networked	Canon	Canon R5065 51.01	CXG05407	B/N	00:00:85:8B:8E:9C

Filtered: 50 Selected: 1 Add Selected Equipment to Visio Page Edit Filter

## Optional Integration with SiteAudit Visualizer™ Mapping Tool



## Trend: Device Usage Rating by Percentage of Devices



## NETAPHOR SITE AUDIT IS ONE OF MANY TOOLS UTILIZED IN CANON'S MDS PROGRAM

Recognized as a leader in the IDC WorldWide Contractual Managed Print & Document Services MarketScape Hardcopy 2018-2019, Canon Managed Document Services (MDS) is a unified offering for total output and information management solutions. It consists of complete program customization within the desired time frame, specific to a company's unique business needs. From the printed page to the electronic document, Canon provides a portfolio of custom products, solutions, services, and subject-matter experts. All these help businesses achieve their goals for cost reduction, improved serviceability, support, and information accessibility. Moreover, Canon solutions can help businesses treat information as an asset.

### Key Managed Print Capabilities

- **Deployment:** A single install scales from one to 25,000 devices.
- **Inventory:** Tracks moves, adds, and changes to (i)MAC/R) single- and multifunction devices, label and wide-format printers (local and networked), and some desktop scanners.
- **Billing:** Tracks 28 separate meters for billing and device utilization.
- **Supplies Replenishment:** Tracks levels, yields, and replacement metrics.
- **Service Performance:** Tracks uptime, downtime, and response time.
- **Alerting:** Provides rules-based standard, custom, and thresholds alerts.
- **Reporting:** Offers 70 reports plus web reports and unlimited custom reports.
- **Visualization:** See charts, trends, and graphs from inventory to quarterly business reviews (QBRs), to TCO, security, and more.
- **Connectors to ServiceNow and other ERP and ITSM applications.**

## LET CANON HELP PUT YOU ON A PATH TO SUCCESS

No matter what your current managed print abilities, Canon can help bring your skills to the next level. Its robust MDS program offers tools and training options that can help get you up to speed quickly and with very little investment. You can leverage the MDS program as your complete, end-to-end solution or adopt individual components that help fill the gaps in your existing solution. Canon tools can help to elevate the managed print program you have in place today but also meet your needs as business processes continue to evolve. From basic fleet management and service automation for TCO reduction to providing advanced services for more complex information workflows, Canon brings the expertise, people, technology, solutions, and services you need to understand your business and manage your environment.



### Specifications

#### SiteAudit OnSite v7

#### Platforms

Windows® 10; Windows® Server 2016/R2/ 2019  
MS SQL Express and Server 2016/2017/2019  
.NET4.6.2 or later  
IIS 10 or later

#### Microsoft Certified

Certified for server and client software

USA.CANON.COM



Canon is a registered trademark of Canon Inc. in the United States and may also be a registered trademark or trademark in other countries. All other referenced product names and marks are trademarks of their respective owners. All screen and printer output images are simulated. Specifications and availability subject to change without notice. Not responsible for typographical errors.  
©2020 Canon U.S.A., Inc. All rights reserved.