



## **DS-95I FOLDER INSERTER**

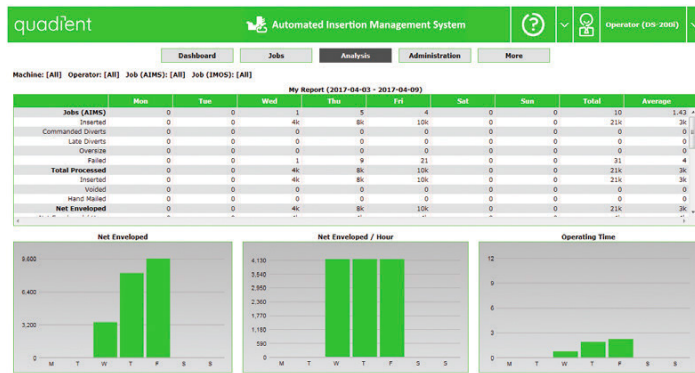
Flexible, Intuitive, and Intelligent

# YOUR MAIL CENTER ASSISTANT

## A Flexible Folder Inserter to Automate Document Processing

With the need to identify more efficient and productive ways to conduct business, companies are always looking for ways to streamline the processing of their business-critical communications. Ideally suited for businesses that need to automate a wide variety of document sizes and types, the DS-95i folder inserter handles them all with ease. DS-95i comes standard with barcode reading technology to automate variable-page jobs, incorporating another layer of security that ensures the right documents are always sent to the right person. Add Quadiant's powerful Document Automation Software or AIMS-500 software for even greater process optimization and integrity.

## Visibility and Integrity



Businesses today face a multitude of regulatory issues and customer demands to guarantee the integrity of business communications. The optional AIMS-500 software extends DS-95i's built-in document security to help deliver complete end-to-end process verification. Its verification capability confirms every piece of mail in your job has been processed accurately, providing complete closed loop, piece-level integrity.

## Automated Document Preparation

Quadiant's optional Document Automation Software can add significant value by enhancing the formatting, personalization, grouping, printing, barcoding, and addressing of your documents.

## Business Impact

**Revenue Growth**  
Maximize opportunities to better communicate with customers

**Customer Engagement**  
Create your own professional-looking mail pieces

**Risk Mitigation**  
Ensure that every recipient receives the right mail piece

**Expense Control**  
Maximize productivity thanks to speed and reliability

Ensuring every customer's mailing contains the right documents is more important than ever. Seamlessly pair your folder inserter with document automation software and AIMS to gain efficiencies in your mailing and communications operation.



## Document Control and Security

Quadiant's exclusive CIS scanning device reads OMR 1 track, 1D barcodes, and 2D Data Matrix codes. With this technology, the inserter control codes can be printed nearly anywhere on the document, providing you greater document layout flexibility and control.



# DS-95i

## 1. High-capacity Vertical Stacker

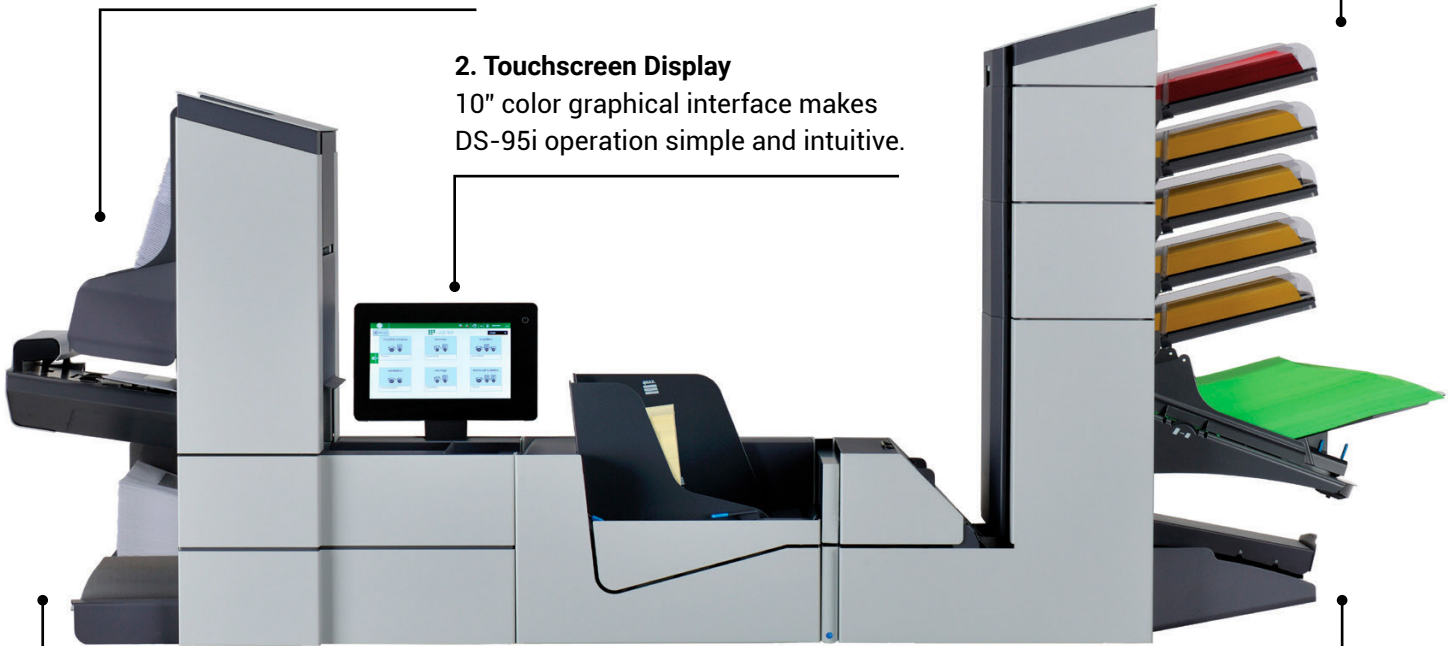
Preserves printing order and holds up to 500 finished envelopes so operators spend less time unloading.

## 3. Feeder Linking

Continuous operation is achieved by linking feeders. If one feeder runs empty, another one automatically takes over, allowing you to refill as needed until your job is complete.

## 2. Touchscreen Display

10" color graphical interface makes DS-95i operation simple and intuitive.



## 4. Envelope Hopper

500-envelope capacity with on-the-fly reloading.

## 5. Automatic Collator

Collate and fold up to 10 pages together.



## SIMPLE AND INTUITIVE

The color touchscreen and automatic job setup make DS-95i exceptionally easy to use. Simply load envelopes and documents and the DS-95i will adjust all settings automatically and even save them to the memory for instant recall.



## VERSATILE AND EFFICIENT

The VersaFeeder is the ideal choice for running inserts, BREs, or even booklets up to 2.5 mm thick. This dedicated insert feeder holds up to 500 documents at a time and can be programmed to feed automatically or selectively feed on command.

# SPECIFICATIONS

<b>Processing speed</b>	Up to 4,300 envelopes/hour
<b>10" Color touchscreen</b>	Standard
<b>Automatic settings</b>	Standard
<b>FlexFeed multi-format feeder</b>	Standard
<b>Multi-sheet feeding</b>	Standard
<b>Cascade from all feeder</b>	Standard
<b>Document and insert feeders</b>	Up to 6
<b>Full page CIS scanner</b>	Standard
<b>Barcode Recognition (BCR)</b>	Standard
<b>Optical Mark Recognition (OMR)</b>	Standard
<b>Job memory</b>	50
<b>Manual feed</b>	Standard
<b>High-capacity feeder</b>	Up to 725 sheets (20 lb.)
<b>FlexFeed capacity</b>	325
<b>MaxiFeeder capacity</b>	1,200 sheets (20 lb.)
<b>Fold types</b>	Letter, z-fold, single, double parallel, no fold
<b>Document height</b>	3.5" - 14"
<b>Document width</b>	5.1" - 9"
<b>Document weight</b>	16 - 66 lbs.
<b>Envelope length</b>	3.5" - 6.3"
<b>Envelope width</b>	6.3" - 9.7"
<b>Maximum set thickness</b>	2.5 mm
<b>Accumulate before folding</b>	Standard
<b>Tip-to-tip sealing</b>	Standard
<b>Options</b>	
<b>AIMS closed loop piece verification</b>	Available
<b>Short feeders</b>	Available
<b>Different exits: vertical stacker, side exit</b>	Available
<b>Document Automation Software</b>	Available
<b>VersaFeeder Insert Feeder</b>	Available
<b>Mailing system interface</b>	Available



## WE'VE GOT YOU COVERED

Quadient maintains a network of offices across the country to provide local customer support and trained technicians who are ready to assist you. You can be confident that when you need knowledgeable support or expert service, the point-of-contact will be a Quadient office in your area consisting of a team of local professionals.



### BACKED BY THE EXPERTS

Gartner, IDC, Forrester, and Aspire



### EXPERIENCE

A rich history of world-class leadership



### PROVEN RESULTS

97% customer satisfaction rate



### EXPERTISE

7 trillion personalized experiences annually



1-844-50-CANON | [usa.canon.com/business](https://usa.canon.com/business)