

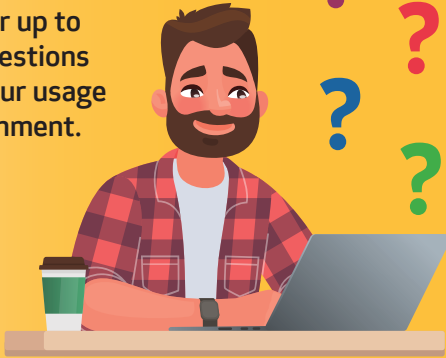
Need help enabling security settings on your multifunction printer?



No problem! **The Security Settings Navigator** will give you recommended printer security settings for your imageRUNNER ADVANCE DX and imagePRESS Lite models.

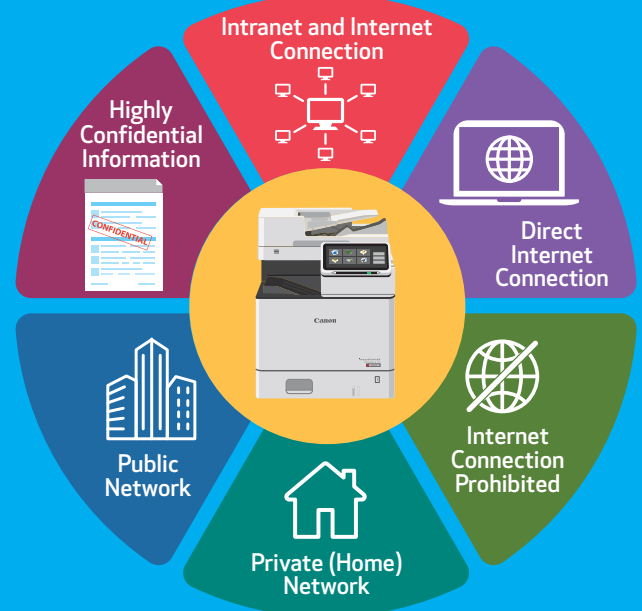
1

Answer up to four questions about your usage environment.



2

The Security Settings Navigator will categorize your usage environment based on your answers.



3

Download a PDF with the recommended device security settings for your environment.

Apply recommended security settings all at once using the "Recommended Settings by Environment" one-touch button on the device or remote interface.



To get started, click the **Online User Manual** to gain access to the Security Settings Navigator. Then choose the product line you want and click on that link.

Click here to access Canon User Manuals for all product lines.



Canon

imageRUNNER
ADVANCE DX

imagePRESS Lite

Canon, imageRUNNER, and imagePRESS are registered trademarks of Canon Inc. in the United States and may also be registered trademarks or trademarks in other countries. Canon products offer certain security features, yet many variables can impact the security of your devices and data. Canon does not warrant that use of its features will prevent security issues. Nothing herein should be construed as legal or regulatory advice concerning applicable laws; customers must have their own qualified counsel determine the feasibility of a solution as it relates to regulatory and statutory compliance. All other referenced product names and marks are trademarks of their respective owners. Specifications and availability subject to change without notice. Not responsible for typographical errors. ©2022 Canon U.S.A., Inc. All rights reserved.
0922R2-SSNF-PDF-IH