



54" Summa S3 T140



48" Summa S One D120

Summa S One and S3 Cutters

The Summa S One and S3 cutters are designed to master precision and versatility while being durable workhorses that are built to last. Constructed with premium materials, they are designed to withstand heavy use while delivering consistent, high-quality results day in and day out.



S One D60 shown with an optional stand.

S ONE SERIES

Summa S One

A GREAT COMPANION TO GROW YOUR BUSINESS

The 24" Summa S One D60 and 48" S One D120 best compliment Canon's imagePROGRAF line of large format printers.

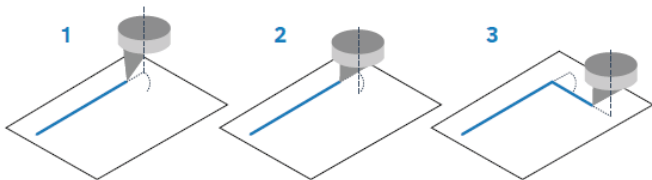
Advanced Cutting Technology

The Summa S One Series roll cutters utilize Drag Knife Technology, the most commonly used technology in the market that is specifically designed for low-mid volume cutting environments.

Differentiating from the Competition

The S One Series is built on Summa's legendary performance, designed with an excellent material transport system to process jobs more accurately and continuously. Precision meets efficiency and affordability with Summa's drag knife cutting technology:

1. The drag knife stops cutting before entering a corner.
2. The eccentric blade is rotated by performing a drag movement to the desired angle, never leaving the media.
3. Once the drag movement is completed, the corner cutting continues.



Ease of Use

Enjoy ease of use with integrated intelligent features, such as an intuitive touchscreen and easy connectivity to the most common environments in the market.

Applications

The possibilities of growing your business are endless with the combination of Canon and Summa. With a variety of compatible Canon media, implementing applications are easy.

- Durable Matte Film
- Water Resistant Matte Polypropylene
- Adhesive Vinyl
- Glossy Photo
- Photo Paper Pro Luster
- Repositionable Peel N Stick



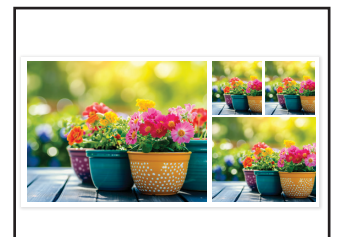
Small Decals



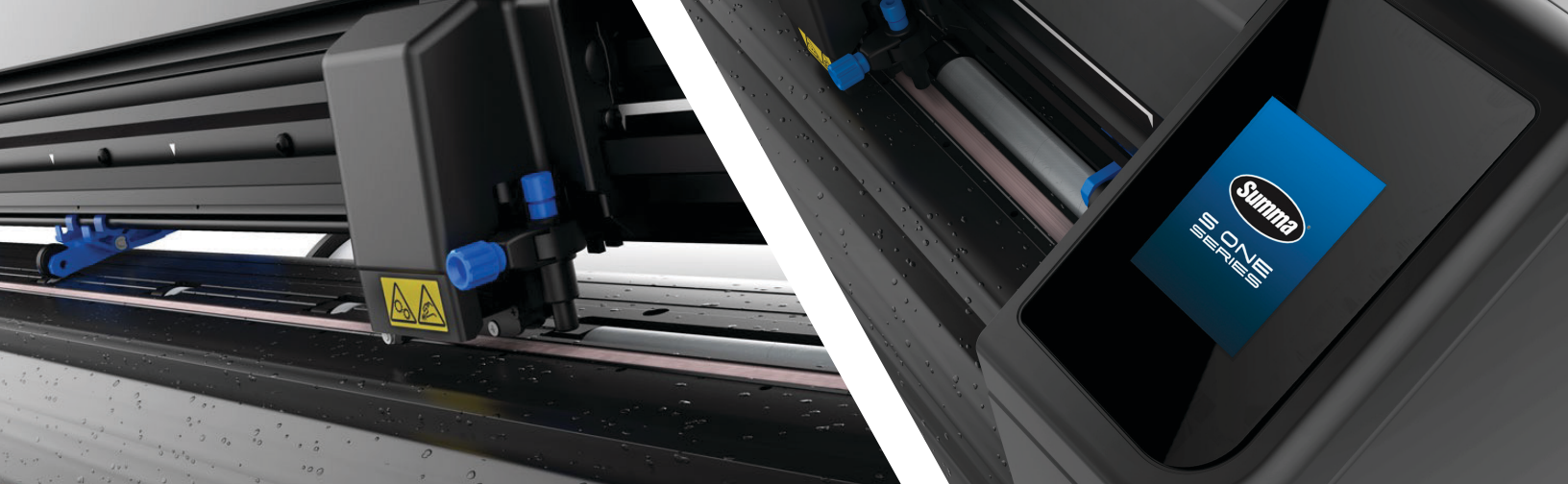
Stickers



Labels

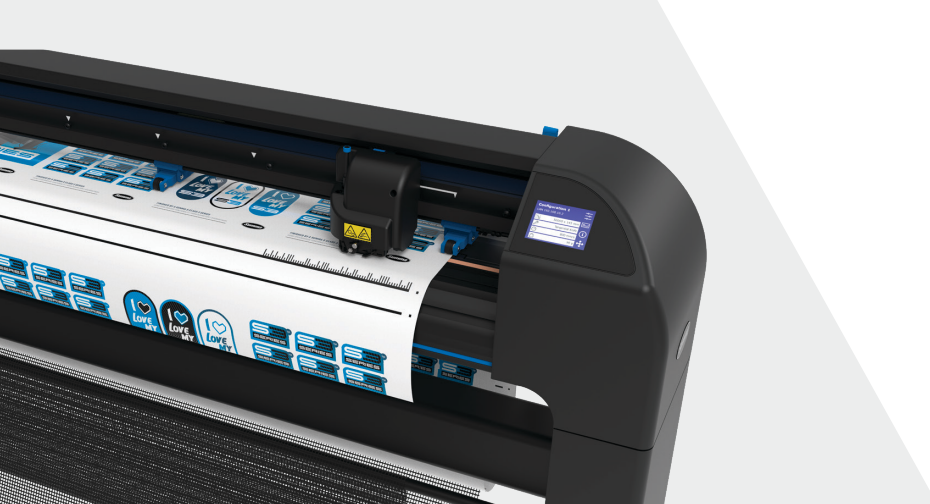


Small Prints



TECHNICAL SPECIFICATIONS

Model	S One D60	S One D120
Cutting Technology	Drag knife	
Dimensions (W x D x H)	38.2 x 16 x 12 in	63.6 x 27.7 x 43.8 in
Media Width	3.2 to 26 in	5.3 to 53.1 in
Max. Working Width Oversized Mode* (W x L)	23.2 in x 1968 in 25.6 in x 1968 in (with Oversized Mode)	48.6 in x 1968 in 51 in x 1968 in (with Oversized Mode)
	"Oversized" mode allows a wider cutting area: +/-2.36 in	
Pinch Rollers	2	3
Alignment Type	• OPOS X - OPOS Xtra • Barcode job recognition • Up to 2 x 64 marks on the X-line • Y-Line compensation	
Tracking Performance	26 ft max. within guaranteed specifications for media less than 30 in 13 ft max. within guaranteed specifications for media larger than 30 in	
Media Thickness	0.002 in to 0.010 in (0.0508mm to 0.054mm)	
Accuracy	0.2% of move or 0.010 in (0.254mm), whichever is greater	
Speed	Up to 44 ips diagonal	
Acceleration	Up to 3 G diagonal	
Knife Pressure	Up to 600 grams	
Connectivity	Ethernet, USB, WiFi	
Power Requirements	100-240 VAC, 50/60 Hz	
* In "Oversized" mode the tracking performance is no longer guaranteed.		



Summa S Class 3

CUTTING EXCELLENCE THROUGH AN EFFICIENT AND PRODUCTIVE WORKFLOW

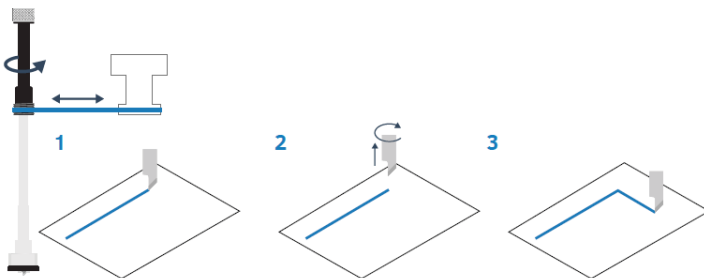
The 54" Summa S3 T140 and 62" S3 T160 best compliment Canon's Colorado large format printers.

True Tangential Cutting Technology

The Summa S Class 3 Series roll cutters utilize Tangential Knife Technology which is specifically designed for mid-high volume cutting environments. The S Class 3 Series has a motorized knife, allowing the cutters to accurately cut through thicker substrates while achieving unparalleled accuracy and precision down to the smallest details.

The True Tangential Movement:

1. The tangential knife stops cutting right before a corner.
2. A motor lifts and reorients the blade.
3. Once the blade has reached the desired angle, it is lowered and continues to cut the corner.



Smart Object Sorting and Paneling

The Smart Object Sorting feature is designed to select the most optimal starting point for cutting objects. In addition, the unique Smart Paneling function improves cutting accuracy and simplifies post-processing.

Material Transport

Material transport is one of the most intricate aspects when cutting a variety of substrates, such as vinyl. The slightest error can result in material waste, loss of time, and operator frustrations. Summa offers an exquisite tracking system and extensive range of features to ensure your Summa S3 Series cutter performs as flawlessly as possible.

Applications

Canon and Summa understand the importance of efficiency and productivity within a business. With a variety of compatible Canon media, implementing applications are easy.

- Adhesive Vinyl
- Repositionable Vinyl
- Matte Vinyl
- Glossy Vinyl
- Window Film
- Reflective Film
- Floor Graphics
- Glossy Photo
- Photo Paper Pro Luster



Wall/Floor Graphics



Window Graphics



Decals

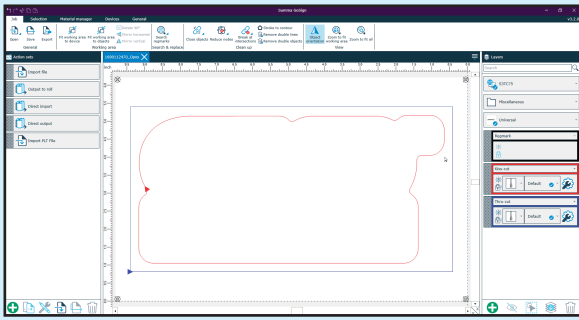


Stickers



TECHNICAL SPECIFICATIONS

Model	S3 T140	S3 T160
Cutting Technology	Tangential knife	
Dimensions (W x D x H)	79.6 x 27.2 x 43.7 in	88.6 x 27.2 x 43.7 in
Media Width	6.7 to 57.0 in	6.7 to 66.1 in
Max. Working Width Oversized Mode* (W X L)	53.1 in x 1968 in 55.9 in x 1968 in (with Oversized Mode)	62.2 in x 1968 in 65 in x 1968 in (with Oversized Mode)
	“Oversized” mode allows a wider cutting area: +/-2.8 in	
Pinch Rollers	4	
Alignment Type	• OPOS X - OPOS Xtra • Barcode job recognition • Up to 2 x 64 marks on the X-line • Y-Line compensation	
Tracking Performance	Within +/- 0.004 in on plots: • 40 ft max. within guaranteed specifications for media less than 30 in wide* • 13 ft max. within guaranteed specifications for media larger than 30 in wide*	
Media Thickness	Up to 0.047 in (1.1938mm) with sandblast tangential knife	
Accuracy	0.2 % of movement or 0.010 in, whichever is greater	
Speed	Up to 56 ips diagonal	
Acceleration	Up to 4.25 G diagonal	
Knife Pressure	Up to 1000 grams	
Connectivity	Ethernet, USB, WiFi	
Power Requirements	100-120 / 220-240 VAC, 50/60 Hz, 85 VA maximum	
* In “Oversized” mode the tracking performance is no longer guaranteed.		

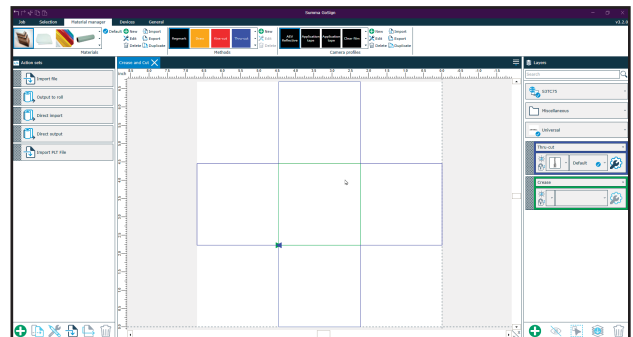
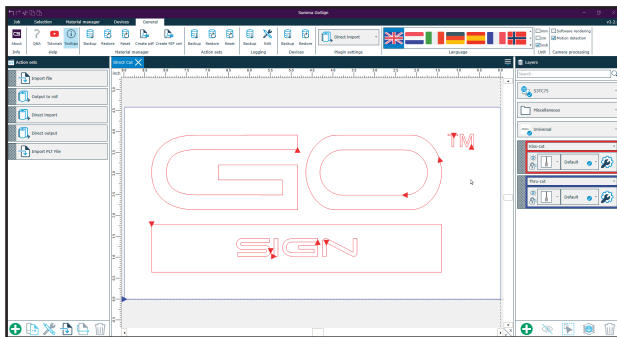


GoSign Software by Summa

Maximize the use of your Summa Cutter

With GoSign cutting software, manage preferred workflow with great flexibility for the S One D60, S One D120, S3 T140, and S3 T160 cutters. Features include but not limited to:

- Scale, rotate, and prepare the design for cutting
- Kiss-Cut and Flex-Cut capabilities
- Automate certain tasks and add custom configurations to make your designs ready to cut out with the push of a button
- Capable of controlling multiple Summa devices simultaneously
- Import PDF, SGP, OXF, and DXF files



Summa S3 T140



imageprint
R.E.D.

ImagePrint R.E.D. Software by ColorByte

The Summa S One Series ships standard with the ImagePrint R.E.D software by ColorByte. ImagePrint R.E.D is designed to help you reduce time and manual work with intuitive software and precise high-speed cutting.

This SUMMA and ImagePrint R.E.D. cutting/software bundle is a creative output solution that allows you to add customization and personalization elements to your business:

- Essential layout tools
- Automatic profile-to-media matching
- Quickly nest and print images, shapes, and contours on a single page
- Includes PDF support with spot color matching
- Advanced queue management system





usa.canon.com/largeformat