

**Canon**

Authorized Distributor and  
Service Provider of Whiz

**Whiz**  
SoftBank  
Robotics



**whiz**

**COMMERCIAL ROBOT VACUUM**

# CUTTING EDGE AI FOR ELEVATED HEALTH & SAFETY

Changing Professional Cleaning with Breakthrough AI Navigation Technology



## **INNOVATION**

Leverage robotics and automation to help drive brand value, differentiate from the competition, and move your business forward.



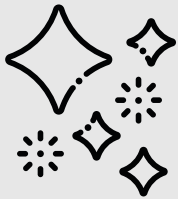
## **RESILIENCE**

Use SoftBank Robotics Connect to help reinvent and monitor your physical environment with adaptable technology and real-time data.



## **EXPERIENCE**

Having a Whiz on your team can help to meet and exceed expectations to attract customers and talent, improve productivity, and foster revenue growth in your ecosystem.



## **CLEANLINESS**

Whiz aids in increased cleaning frequency, coverage, efficacy, and HEPA filtration so that you can live healthier in your day-to-day spaces.



### EASY TO USE

With an easy, out-of-the-box setup that can be completed in approximately 15 minutes (excluding mapping and training), teams can start benefiting from Whiz right away.

### COVER MORE GROUND

Whiz learns all the routes your team needs—and can clean up to 5,000 sq.ft. per hour.

### NEW REAL-TIME ALERTS

SMS Notifications or the notification pager alerts your team when Whiz completes a route - or if it needs a hand.

### SAFETY AND PERFORMANCE

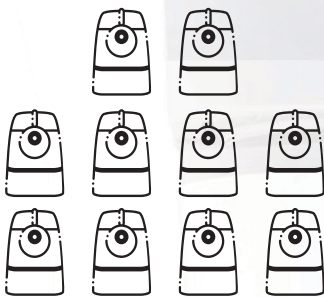
Whiz autonomously avoids people, glass walls, cliffs, and other hazards.

### AUTONOMOUS AND MANUAL MODES

Let Whiz do the work, or take control when you need to.

### CONFIRMED CLEAN

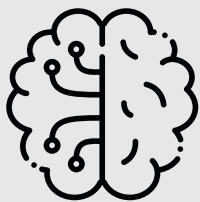
Whiz delivers robust cleaning performance data that can easily be shared with critical stakeholders.



**>20,000**  
Whiz **DEPLOYED**  
world-wide

**>1.5 Billion\***  
SQUARE FEET  
**COVERED** by Whiz

\*In North America



# LEARN

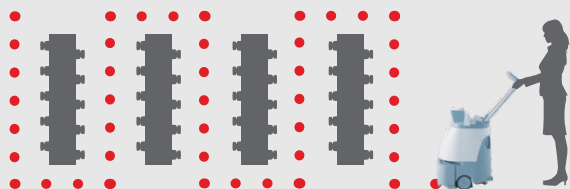
Simple to Use. Simple Set-up. Teach a cleaning route and press the start button. It's that simple.

## Create a route (Teaching)

1. Set the Home Location Code as the starting point.

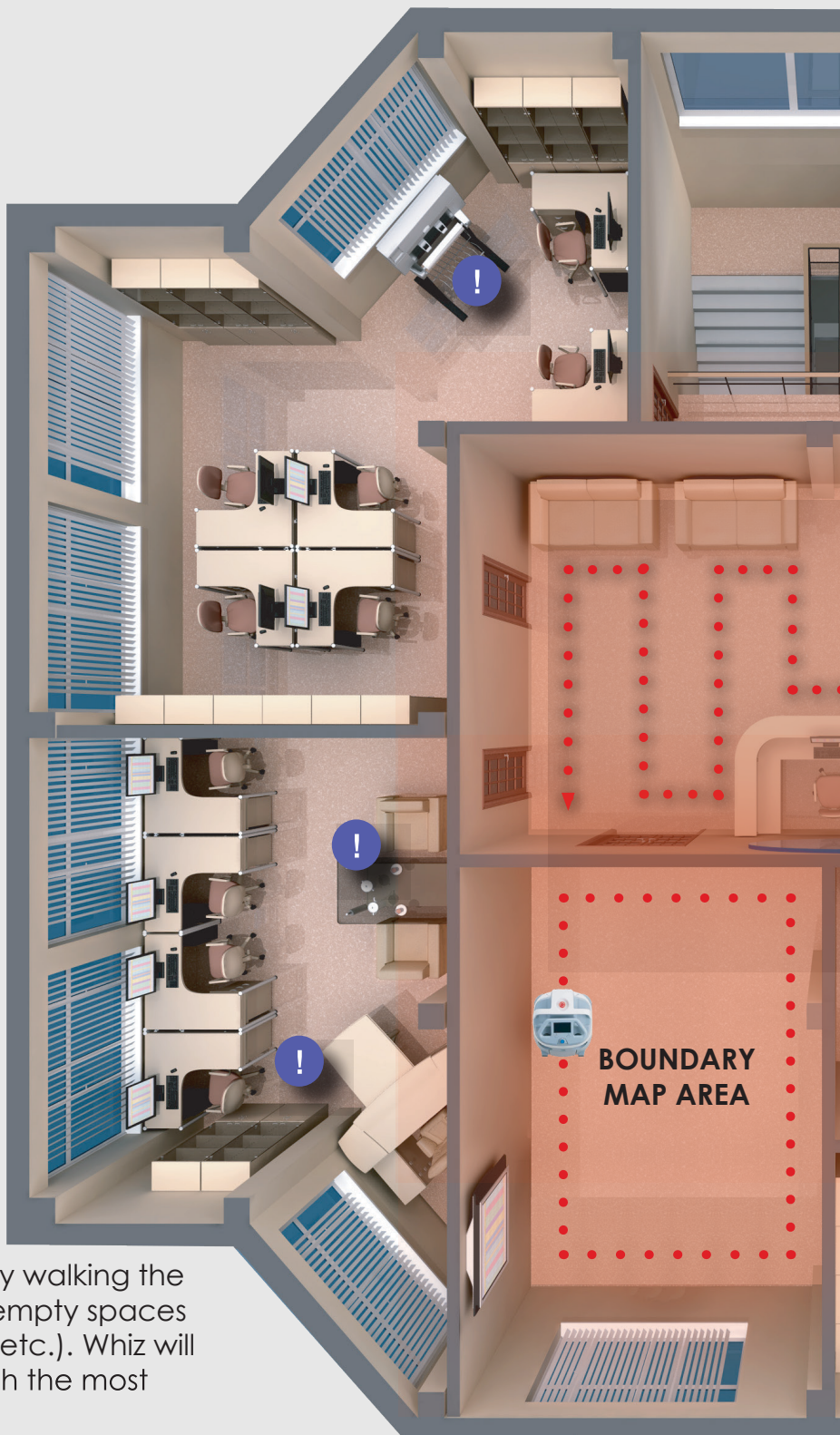


2. Manually push Whiz through the cleaning route to teach.



**Moves autonomously along the cleaning path.** After initial use, simply press the start button for autonomous cleaning. Capable of memorizing six routes per HLC.

**User can also teach a boundary map** by walking the border of a space, best used for large empty spaces (ballrooms, empty conference spaces, etc.). Whiz will then determine and fill in the border with the most efficient way to clean the space.







# ADAPT

Whiz detects and avoids obstacles, responding to environmental changes.

Multiple sensors detect obstacles, stairs, and human movement. Whiz avoids objects or stops until the route clears. Whiz can access and clean narrow spaces, even along hallway wall edges.



## DETECTS OBSTACLE

Avoids obstacle and continues cleaning.



## DETECTS MOVEMENT

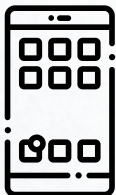
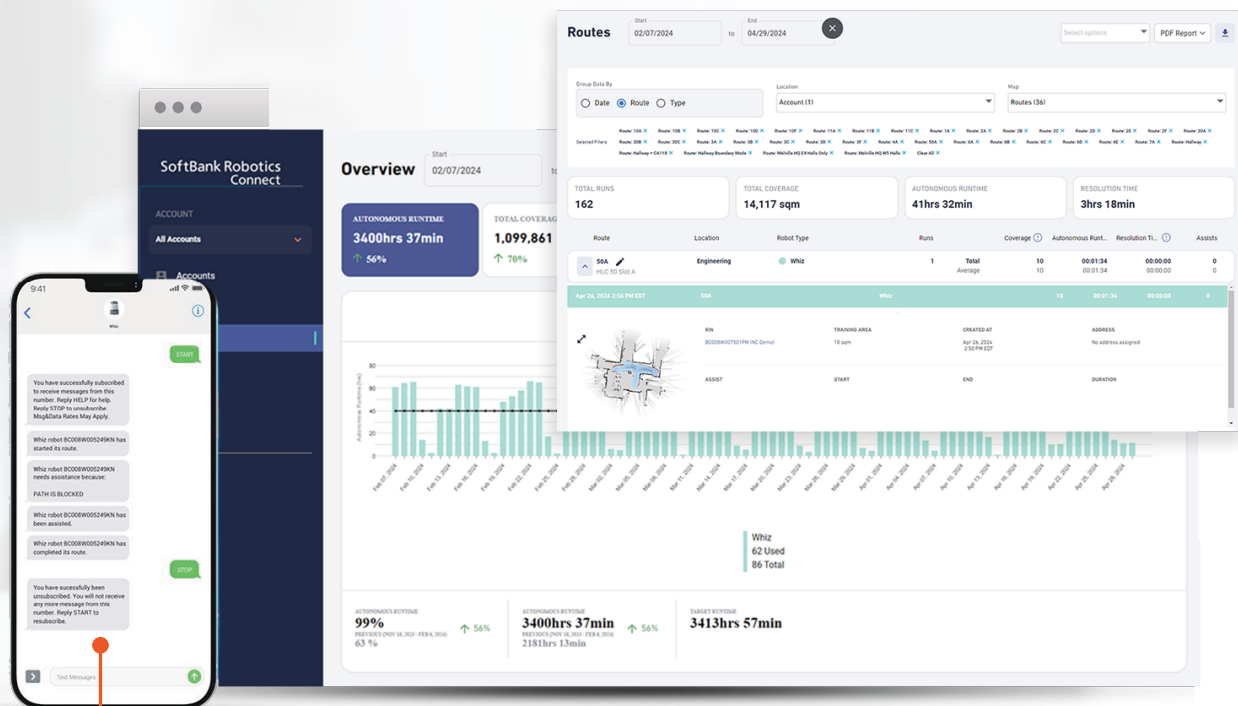
Pauses to evaluate environment and to determine best way to continue with route.



# TOTAL CONTROL

SoftBank Robotics Connect, a cloud-based data and reporting platform for Whiz, combines cleaning metrics and data-driven analytics features to help monitor and improve your environment's health and safety. Whiz is powered by BrainOS, an intelligent navigation platform.

**INSIGHTS:** Understand your Whiz's performance and the value you get from your robots. Use the reports to track towards business goals, manage routes and locations of your units, and receive actionable suggestions to get the most out of Whiz.



**SMS TEXT NOTIFICATIONS:** Stay informed of Whiz activity with SMS text support for operations managers and team leads. Receive near-time texts on your mobile device of assist notifications from specific robots to avoid delay in cleaning.

# SPECIFICATIONS

## ROBOTIC OPERATING SYSTEM

BrainOS	Autonomous navigation software
Safety Features	LIDAR sensors detect and maneuver around people, objects, and cliffs

## HARDWARE FEATURES

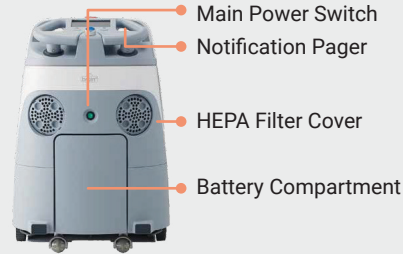
Size	18.6 in x 17.9 in x 25.7 in
Battery	Lithium ion; 23.7 Ah, 25.2V <i>(Unit comes with two swappable batteries)</i>
Run Time	Average 3 +/- hours on a single charge depending on regular or max power mode
Dust Bag Capacity	4.0 L
HEPA Filtration	Yes
Noise Level	Normal mode 62 db
Consumable Parts	HEPA filters, dust bag, brush, home location code
Weight	Machine weight: 66 lbs / 30 kg Battery weight: 11 lbs / 5 kg
Cleaning Productivity	Up to 5000 ft <sup>2</sup> - 6000 ft <sup>2</sup> / hour
Max Speed	1.1 mph

# PARTS/FUNCTIONS

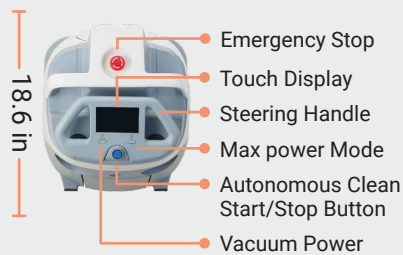
## FRONT





## BACK



## TOP



 Notification Pager  
2.3 in x 3.9 in x .70 in  
(Width, Length, Depth)

 Home Location Code  
3.5 in x 3.15 in

# SUPPLIES

Includes charger, home location code, vacuum motor, and other accessories.



**Paper Bag**  
Easy disposal,  
4L max capacity



**Brush**  
Removable rotating brush,  
auto height adjusting



**HEPA Filter**  
Captures particles,  
including pollen and dust



**Battery**  
Swappable lithium  
ion battery



usa.canon.com/cleanrobotics

Canon is a registered trademark of Canon Inc. in the United States and may also be a registered trademark or trademarks in other countries. Softbank Robotics and Whiz are trademarks of Softbank Robotics America, Inc. All other referenced product names and marks are trademarks of their respective owners and are hereby acknowledged. Not responsible for typographical errors.  
©2024 Canon U.S.A., Inc. All rights reserved.

