

# WHIZ FOR SENIOR LIVING



## Common Challenges

- ✓ **Resident Health & Safety:** Keeping your residents safe and healthy is a primary concern in senior living communities.
- ✓ **Limited Staff:** Resource challenges may be a recurring roadblock in your facility. With strict safety protocols, getting the most out of your staff has never been more important.
- ✓ **Resident Experience:** You're evolving to meet and exceed resident expectations to gain referrals and increase occupancy.
- ✓ **Community Engagement:** You are looking for ways to engage with your residents, and offer them unique experiences that differ from other facilities.

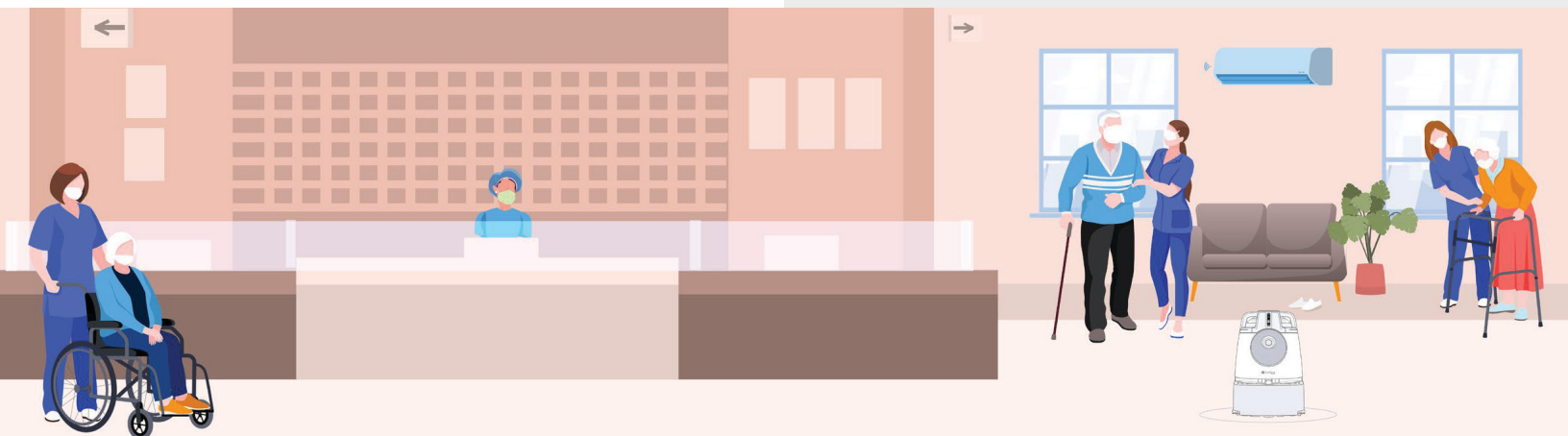
## The Solution



### How Whiz Can Help

Properties across the country have deployed Whiz in their **lobbies** and **hallways** to do a "pre-sweep" prior to scrubbing the floors.

- On-site staff can easily operate the device on a daily basis with its teach-and-repeat functionality and simple management of consumables and maintenance.
- Leave it to the experts. Canon's change management expertise allows for seamless integration of Whiz into your existing programs for health and safety.
- Get tailored analytics and performance on demand.



# THE RESULTS IN SENIOR LIVING



Put residents, family members, and employees at ease by demonstrating your investment in their health and safety while also helping to achieve:

**8X  
LESS**

A Global SoftBank Robotics Study<sup>1</sup> found that there are approximately **eight times less airborne dust and allergens** kicked up by people after using Whiz as compared to manual vacuuming.

**25%  
MORE**

According to a customer, Whiz helped to **boost efficiency up to 25 percent** through automation of repetitive tasks.<sup>2</sup>

**"Mac the Vac' became part  
of our community."**

– Resident at a Major Senior Living Facility

**"Whiz is doing the work of  
one full-time position, so one week of  
work covers the cost for me monthly."**

– Director of EVS at a Major Senior  
Living Facility

Take the next step in your digital transformation. Contact your Canon Authorized representative to learn more.



<sup>1</sup> Global SoftBank Robotics Study (2019) joint research data developed by SoftBank Robotics Corp. and Environmental Allergens Info and Care, Inc.

<sup>2</sup> BES Cleaning and SoftBank Robotics Case Study (2020).

**Canon**

[usa.canon.com/cleanrobotics](https://usa.canon.com/cleanrobotics)

