

CANON FACT BOOK

2024/2025

CANON GROUP 10-YEAR SUMMARY (As of December 31, 2023)

Net Sales, Gross Profit, Operating Profit, Income Before Income Taxes, Net Income

	(Millions of yen)										(Thousands of U.S. dollars)
	2014	2015	2016	2017	2018	2019	2020	2021	2022	2023	
Net sales	¥ 3,727,252	3,800,271	3,401,487	4,080,015	3,951,937	3,593,299	3,160,243	3,513,357	4,031,414	4,180,972	\$ 29,443,465
Gross profit	1,860,422	1,932,096	1,671,998	1,990,554	1,835,554	1,610,033	1,375,868	1,627,792	1,827,802	1,968,910	13,865,563
Operating profit	345,354	343,729	216,338	322,211	342,452	174,420	110,547	281,918	322,399	375,366	2,643,423
Income before income taxes	382,843	347,309	244,564	354,490	362,392	195,493	130,280	302,706	352,440	390,767	2,751,880
Net income attributable to Canon Inc.	254,627	219,943	150,334	242,081	252,441	124,964	83,318	214,718	243,961	264,513	1,862,768
Net income attributable to Canon Inc. shareholders per share											
Basic	228.88	201.41	137.66	223.03	233.80	116.79	79.37	205.35	236.71	264.20	\$ 1.86
Diluted	228.88	201.40	137.66	223.03	233.78	116.77	79.35	205.29	236.63	264.08	1.86

*Fiscal year figures from 2014 to 2019 were restated to account for provision for paid leave.

Profitability

	(%)									
	2014	2015	2016	2017	2018	2019	2020	2021	2022	2023
Gross profit to net sales ratio	49.9	50.8	49.2	48.8	46.4	44.8	43.5	46.3	45.3	47.1
Operating profit to net sales ratio	9.3	9.0	6.4	7.9	8.7	4.9	3.5	8.0	8.8	9.0
Income before income taxes to net sales ratio	10.3	9.1	7.2	8.7	9.2	5.4	4.1	8.6	8.7	9.3
Net income attributable to Canon Inc. to net sales ratio	6.8	5.8	4.4	5.9	6.4	3.5	2.6	6.1	6.1	6.3
ROA ¹	5.8	4.9	3.1	4.7	5.0	2.6	1.8	4.6	5.0	5.0
ROE ²	8.7	7.4	5.2	8.6	8.9	4.5	3.2	7.9	8.1	8.2

1: Return on assets: Based on net income attributable to Canon Inc. 2: Return on equity: Based on net income attributable to Canon Inc. and total Canon Inc. shareholders' equity.

*Fiscal year figures from 2014 to 2019 were restated to account for provision for paid leave.

Sales by Business Unit*

	(Millions of yen)										(Thousands of U.S. dollars)
	2014	2015	2016	2017	2018	2019	2020	2021	2022	2023	
Office	¥ 2,078,732	2,110,816	1,807,819	1,865,928	1,868,355	1,752,107	1,440,212	—	—	—	—
Medical System	—	—	—	436,187	437,578	438,525	436,074	—	—	—	—
Imaging System	1,343,194	1,263,835	1,095,289	1,099,125	970,435	807,414	712,238	—	—	—	—
Industry and Others	398,765	524,651	584,660	768,767	781,887	688,433	654,813	—	—	—	—
Printing	—	—	—	—	—	—	—	1,946,656	2,272,610	2,346,076	\$ 16,521,662
Medical	—	—	—	—	—	—	—	480,362	513,331	553,780	3,899,859
Imaging	—	—	—	—	—	—	—	653,532	803,480	861,625	6,067,782
Industrial	—	—	—	—	—	—	—	337,721	329,232	314,719	2,216,331
Others and Corporate	—	—	—	—	—	—	—	178,784	212,349	189,791	1,336,556

*Based on the realignment of Canon's internal management structure, from 2022, Canon has changed the name and structure of segments. Figures for fiscal year 2021 were also reclassified.

*A certain business, which was previously included in Others, has been presented within the Printing Business Unit from the beginning of the first quarter of 2023. Figures for fiscal year 2021 and 2022 were also reclassified.

Sales by Region

	(Millions of yen)										(Thousands of U.S. dollars)
	2014	2015	2016	2017	2018	2019	2020	2021	2022	2023	
Japan	¥ 724,317	714,280	706,979	884,828	869,577	872,534	806,305	830,378	864,808	901,589	\$ 6,349,218
Americas	1,036,500	1,144,422	963,544	1,107,515	1,076,402	1,029,078	852,451	968,839	1,255,405	1,312,438	9,242,521
Europe	1,090,484	1,074,366	913,523	1,028,415	1,015,428	882,480	795,616	894,898	1,034,008	1,111,211	7,825,430
Asia and Oceania	875,951	867,203	817,441	1,059,257	990,530	809,207	705,871	819,242	877,193	855,734	6,026,296

Total Assets, Shareholders' Equity, Total Debt, Cash-On-Hand, Inventories

	(Millions of yen)										(Thousands of U.S. dollars)
	2014	2015	2016	2017	2018	2019	2020	2021	2022	2023	
Total assets	¥ 4,464,854	4,431,720	5,142,279	5,201,626	4,902,955	4,771,918	4,625,614	4,750,888	5,095,530	5,416,577	\$ 38,144,908
Canon Inc. shareholders' equity	2,971,963	2,959,929	2,776,327	2,863,986	2,820,644	2,685,496	2,575,031	2,873,773	3,113,105	3,353,022	23,612,831
Canon Inc. shareholders' equity to total assets ratio (%)	66.6	66.8	54.0	55.1	57.5	56.3	55.7	60.5	61.1	61.9	
Total debt	2,166	1,569	613,139	532,566	400,489	514,946	506,172	320,971	417,413	517,317	3,643,077
Debt to total assets ratio (%)	0.0	0.0	11.9	10.2	8.2	10.8	10.9	6.8	8.2	9.6	
Cash-on-hand	844,580	633,613	630,193	721,814	520,645	412,814	407,684	401,395	362,101	401,323	2,826,218
Cash-on-hand in months of net sales*	2.6	1.9	2.2	2.0	1.6	1.4	1.4	1.3	1.0	1.1	
Inventories	528,167	501,895	560,736	570,033	611,281	584,756	562,807	650,568	808,312	796,881	5,611,838
Inventory turnover in days*	50	47	59	49	56	59	60	66	69	66	

*Index based on the previous six months' sales.

Cash Flow

	(Millions of yen)										(Thousands of U.S. dollars)
	2014	2015	2016	2017	2018	2019	2020	2021	2022	2023	
Net cash provided by operating activities	¥ 583,927	474,724	500,283	590,557	365,293	358,461	333,805	451,028	262,603	451,190	\$ 3,177,394
Net cash used in investing activities	-269,298	-453,619	-837,125	-165,010	-195,615	-228,568	-155,439	-207,256	-180,820	-275,372	-1,939,239
Free cash flow	314,629	21,105	-336,842	425,547	169,678	129,893	178,366	243,772	81,783	175,818	1,238,155

R&D Expenses, Increase in PP&E, Depreciation and Amortization

	(Millions of yen)										(Thousands of U.S. dollars)
	2014	2015	2016	2017	2018	2019	2020	2021	2022	2023	
R&D expenses ¹	¥ 308,979	328,500	302,376	333,371	315,842	298,503	272,312	287,338	306,730	331,914	\$ 2,337,423
R&D expense to net sales ratio (%) ¹	8.3	8.6	8.9	8.2	8.0	8.3	8.6	8.2	7.6	7.9	
Capital expenditure ²	224,760	243,130	208,379	181,389	200,504	211,228	161,727	179,000	183,291	231,725	1,631,866
Depreciation and amortization	263,480	273,327	250,096	261,881	251,554	237,327	227,825	221,246	226,492	238,676	1,680,817

1: From fiscal year 2018, a reclassification of operating profit and other income (deductions) was conducted due to a change in pension accounting standard. From fiscal year 2017, figures for R&D expense were restated to reflect this change.

2: Capital expenditure is the total of tangible and intangible assets.

Number of Employees (end of period)

	2014	2015	2016	2017	2018	2019	2020	2021	2022	2023
Japan	69,201	68,325	72,913	73,665	73,460	72,979	72,338	70,924	69,455	68,532
Americas	18,029	17,635	19,160	18,448	18,361	18,207	15,307	15,263	15,771	15,945
Europe	22,356	24,826	25,511	25,623	25,281	23,126	22,578	22,166	22,214	22,651
Asia and Oceania	82,303	78,785	80,089	80,040	77,954	72,729	71,674	75,681	73,335	62,023
Total employees	191,889	189,571	197,673	197,776	195,056	187,041	181,897	184,034	180,775	169,151

Ratings

	2014	2015	2016	2017	2018	2019	2020	2021	2022	2023
Standard & Poor's	AA	AA	AA	AA-	AA-	A+	A	A	A	A
R & I	AA+	AA+	AA+	AA+	AA+	AA+	AA+	AA	AA	AA

Top Ten U.S. Patent Holders by Company 2019-2023*

Rank	2019 Company		2020 Company		2021 Company		2022 Company		2023 Company	
	No.	No.	No.	No.	No.	No.	No.	No.	No.	
1	IBM ¹	9,262	IBM	9,130	IBM	8,682	Samsung Electronics	6,248	Samsung Electronics	6,165
2	Samsung Electronics	6,469	Samsung Electronics	6,415	Samsung Electronics	6,366	IBM	4,398	Qualcomm	3,854
3	Canon	3,548	Canon	3,225	Canon	3,021	TSMC	3,024	TSMC	3,687
4	Microsoft Technology Licensing	3,081	Microsoft Technology Licensing	2,905	TSMC	2,798	Huawei Technologies	2,836	IBM	3,658
5	Intel	3,020	Intel	2,867	Huawei Technologies	2,770	Canon	2,694	Canon	2,890
6	LG Electronics	2,805	TSMC ²	2,833	Intel	2,615	LG Electronics	2,641	Samsung Display	2,564
7	Apple	2,490	LG Electronics	2,831	Apple	2,541	Qualcomm	2,625	Apple	2,536
8	Ford Global Technologies	2,468	Apple	2,791	LG Electronics	2,487	Intel	2,418	LG Electronics	2,296
9	Amazon Technologies	2,427	Huawei Technologies	2,761	Microsoft Technology Licensing	2,418	Apple	2,285	Micron Technology	2,233
10	Huawei Technologies	2,418	Qualcomm	2,276	Qualcomm	2,149	Toyota Motor	2,214	Intel	2,145

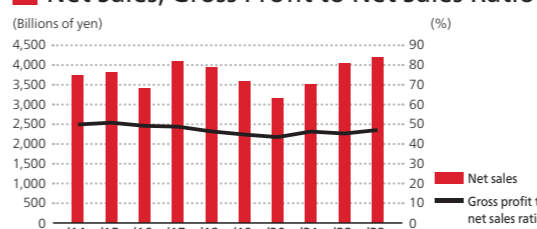
*Numbers of patents are based on figures released by IFI CLAIMS Patent Services.

1: IBM is an abbreviation for International Business Machines Corporation. 2: TSMC is an abbreviation for Taiwan Semiconductor Manufacturing Company Limited.

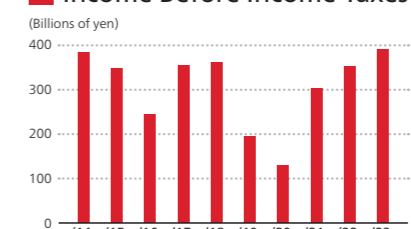
Year-End Stock Price, Year-End Market Capitalization, Annual Dividend Per Share

	(yen)										(U.S. dollars)
	2014	2015	2016	2017	2018	2019	2020	2021	2022	2023	
Year-end stock price	¥ 3,841	3,675	3,295	4,200	3,001	2,987	1,978	2,801	2,856	3,620	\$ 25.49
Year-end market capitalization (Millions of yen)	5,122,319	4,901,581	4,394,751	5,601,807	4,002,624	3,983,950	2,638,183	3,735,870	3,809,227	4,828,222	34,001,563
Annual dividend per share	150	150	150	160	160	160	80	100	120	140	0.99

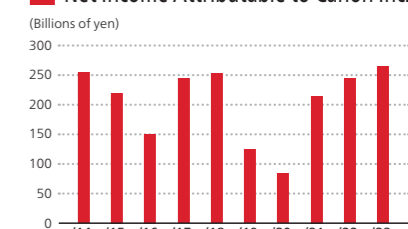
Net Sales, Gross Profit to Net Sales Ratio



Income Before Income Taxes

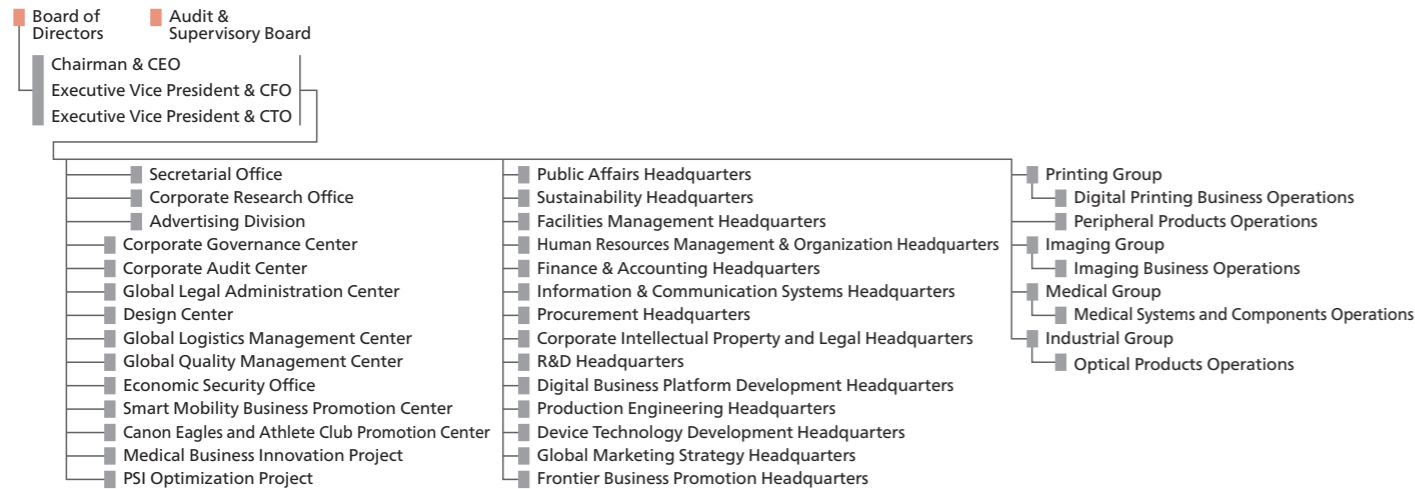


Net Income Attributable to Canon Inc.



ORGANIZATION OF CANON INC. (As of April 1, 2024)

Corporate Organization



Board of Directors (As of April 1, 2024) *Outside

Directors

 Chairman & CEO	 Executive Vice President & CFO	 Executive Vice President & CTO	 Executive Vice President & Director	 Senior Managing Director	 Senior Managing Director
Fujio Mitarai	Toshizo Tanaka Group Executive, Public Affairs Headquarters Group Executive, Facilities Management Headquarters Senior General Manager, Corporate Governance Center	Toshio Homma Head of Printing Group	Kazuto Ogawa Group Executive, Global Marketing Strategy Headquarters	Hiroaki Takeishi Head of Industrial Group Chairman & CEO, Canon Tokki Corporation	Minoru Asada Group Executive, Finance & Accounting Headquarters Chief, PSI Optimization Project
 Director*	 Director*	 Director*	 Director*		
Yusuke Kawamura	Masayuki Ikegami	Masaki Suzuki	Akiko Ito		

Audit & Supervisory Board Members

 Audit & Supervisory Board Members	 Audit & Supervisory Board Members	 Audit & Supervisory Board Members*	 Audit & Supervisory Board Members*	 Audit & Supervisory Board Members*
Chikahiro Okayama	Hideya Hatamochi	Yutaka Tanaka	Hiroshi Yoshida	Koichi Kashimoto

Executive Officers

Executive Vice Presidents		Senior Managing Executive Officers			
 President & CEO, Canon (China) Co., Ltd.	 Head of Medical Group President & CEO, Canon Medical Systems Corporation	 Head of Imaging Group	 Executive Vice President, Canon U.S.A., Inc.	 Group Executive, Production Engineering Headquarters	 President & CEO, Canon Europe N.V. President & CEO, Canon Europe Ltd.
Hideki Ozawa	Toshio Takiguchi	Go Tokura	Seymour Liebman	Eiji Osanai	Yuichi Ishizuka
 Group Executive, Digital Business Platform Development Headquarters Chief, Medical Business Innovation Project	 Senior General Manager, R&D Headquarters	 Senior General Manager, Global Logistics Management Center Senior General Manager, Economic Security Office	 Group Executive, Procurement Headquarters	 Group Executive, Human Resources Management & Organization Headquarters	 Group Executive, Frontier Business Promotion Headquarters
Katsumi Iijima	Shunsuke Inoue	Soichi Hiramatsu	Takashi Takeya	Hisahiro Minokawa	Takayuki Miyamoto
Managing Executive Officers					
 President, Oita Canon Inc.	 Executive Vice President & CFO, Canon Europe Ltd.	 Group Executive, Information & Communication Systems Headquarters	 Unit Executive, Solution & Recurring Product Business Unit	 Deputy Group Executive, R&D Headquarters	 President, Canon Machinery Inc.
Ritsuo Mashiko	Kazuhiko Nagashima	Yoichi Iwabuchi	Tamaki Hashimoto	Katsuhiko Shinjo	Masaki Omori
 Deputy Chief Executive, Medical Systems and Components Operations	 Group Executive, Sustainability Headquarters	 Group Executive, Corporate Intellectual Property and Legal Headquarters	 Senior General Manager, Digital Printing Development Technology Planning & Management Center	 President & CEO, Canon U.S.A., Inc.	 Group Executive, Device Technology Development Headquarters
Akiko Tanaka	Noriko Gunji	Hideki Sanatake	Saijiro Endo	Isao Kobayashi	Takeshi Ichikawa
Executive Officers					
 Unit Executive, IMG Business Unit 3	 President, Fukushima Canon Inc.	 Deputy Chief Executive, Peripheral Products Operations	 Senior General Manager, Smart Mobility Business Promotion Center	 Senior General Manager, Digital Printing Business Planning & Management Center	 President & CEO, Canon Singapore Pte. Ltd.
Hideto Kotani	Katsuyoshi Soma	Toshiyuki Matsuda	Hiroto Okawara	Yoshiyuki Koshimizu	Toshiyuki Ishii
 Plant Manager, Toride Plant	 Senior General Manager, Human Resources Management & Organization Center	 Senior General Manager, Public Relations and IR Center	 Unit Executive, Device Development Unit	 Senior General Manager, Global Legal Administration Center	 Deputy Unit Executive, Semiconductor Production Equipment Unit
Shunji Sawa	Makoto Kambe	Hirotomo Fujimori	Katsuhito Sakurai	Takahito Miura	Seiya Miura

GROUP DIRECTORY (As of March 31, 2024) *Numbers of employees were as of December 31, 2023.

Canon Inc.

Date of establishment	Number of employees	URL
August 1937	23,931	https://global.canon
Operations	Address	
Headquarters	30-2, Shimomaruko 3-chome, Ohta-ku, Tokyo 146-8501, Japan	
Yako Office	3-451, Tsukagoshi, Saiwai-ku, Kawasaki, Kanagawa 212-8530, Japan	
Kawasaki Office	70-1, Yanagicho, Saiwai-ku, Kawasaki, Kanagawa 212-8602, Japan	
Tamagawa Office	16-1, Shimonoge 3-chome, Takatsu-ku, Kawasaki, Kanagawa 213-8512, Japan	
Kosugi Office	9-1, Imaikami-cho, Nakahara-ku, Kawasaki, Kanagawa 211-8501, Japan	
Hiratsuka Plant	22-5, Tamura 9-chome, Hiratsuka, Kanagawa 254-0013, Japan	
Hiratsuka Second Plant	7-1, Okami 3-chome, Hiratsuka, Kanagawa 254-0012, Japan	
Ayase Plant	2596, Yoshioka, Ayase, Kanagawa 252-1124, Japan	
Fuji-Susono Research Park	4202, Fukara, Susono, Shizuoka 410-1196, Japan	
Utsunomiya Office	Utsunomiya Plant	19-1, Kiyoharakogyodanchi, Utsunomiya, Tochigi 321-3293, Japan
	Utsunomiya Optical Products Plant	20-2, Kiyoharakogyodanchi, Utsunomiya, Tochigi 321-3292, Japan
	Optics R&D Center	23-10, Kiyoharakogyodanchi, Utsunomiya, Tochigi 321-3298, Japan

Operations	Address
Otawara Office	1385, Shimoishigami, Otawara, Tochigi 324-8550, Japan
Toride Plant	5-1, Hakusan 7-chome, Toride, Ibaraki 302-8501, Japan
Ami Plant	3577, Yoshiwara, Ohaza, Ami-machi, Inashiki-gun, Ibaraki 300-1195, Japan
Oita Plant	993-1, Nyu, Oita, Oita 870-0318, Japan
Canon Global Management Institute	2-14, Nakane 2-chome, Meguro-ku, Tokyo 152-0031, Japan
Oita Manufacturing Training Center	1867-1, Tsunokobaru, Oita, Oita 870-0271, Japan
Bando Logistics Center	1234, Matate, Bando, Ibaraki 306-0605, Japan

Manufacturing Subsidiaries and Affiliates

Company name	Location	Est.	Emp.
JAPAN			
Canon Electronics Inc.	Saitama	1954	1,786
Canon Precision Inc.	Aomori	1952	1,846
Canon Chemicals Inc.	Ibaraki	1950	1,377
Oita Canon Inc.	Oita	1982	2,865
Canon Finetech Nisca Inc.	Saitama	1953	1,445
Canon Components, Inc.	Saitama	1984	990
Nagahama Canon Inc.	Shiga	1988	1,061
Canon Optron, Inc.	Ibaraki	1974	156
Oita Canon Materials Inc.	Oita	1998	1,461
Ueno Canon Materials Inc.	Mie	2002	401
Fukushima Canon Inc.	Fukushima	2003	1,551
Canon Semiconductor Equipment Inc.	Ibaraki	1917	524
Canon Ecology Industry Inc.	Ibaraki	2004	520
Canon Mold Co., Ltd.	Ibaraki	1972	493
Canon Tokki Corporation	Niigata	1967	580
Nagasaki Canon Inc.	Nagasaki	2008	659
Canon ANELVA Corporation	Kanagawa	1967	1,055
Canon Machinery Inc.	Shiga	1972	714
Canon Wind Inc.	Oita	2008	31
Canon Medical Systems Corporation	Tochigi	1948	5,451
Miyazaki Canon Inc.	Miyazaki	1980	888
Canon Electron Tubes & Devices Co., Ltd.	Tochigi	2003	518
Fukui Canon Materials Inc.	Fukui	2017	139
Minaris Medical Co., Ltd.	Tokyo	1981	344
OHARA Inc. ¹	Kanagawa	1941	462 ²
AMERICAS			
Canon Virginia, Inc.	U.S.A. / Virginia	1985	926

Company name	Location	Est.	Emp.
Canon Environmental Technologies, Inc.	U.S.A. / Virginia	1996	98
Redlen Technologies Inc.	Canada / British Columbia	1999	222
Quality Electrodynamics, LLC	U.S.A. / Ohio	2006	139
EUROPE			
Canon Giessen GmbH	Germany / Giessen	1972	300
Canon Bretagne S.A.S.	France / Liffre	1983	542
Canon Production Printing Netherlands B.V.	The Netherlands / Venlo	1954	1,869
Canon Production Printing Germany GmbH & Co. KG	Germany / Poing	1989	883
Axis Communications AB	Sweden / Lund	1984	2,856
Edale Ltd.	U.K. / Fareham	1972	90
ASIA			
Canon Dalian Business Machines, Inc.	PRC / Liaoning	1989	1,102
Canon Zhongshan Business Machines Co., Ltd.	PRC / Guangdong	2001	2,031
Canon (Suzhou) Inc.	PRC / Jiangsu	2001	2,926
Canon Machinery (Dalian) Co., Ltd.	PRC / Liaoning	2003	50
Canon Finetech Nisca (Shenzhen) Inc.	PRC / Guangdong	1993	450
Canon Inc., Taiwan	Taiwan	1970	4,173
Canon Electronic Business Machines (H.K.) Co., Ltd.	Hong Kong	1991	66
Canon Opto (Malaysia) Sdn. Bhd.	Malaysia / Selangor	1988	1,625
Canon Electronics (Malaysia) Sdn. Bhd.	Malaysia / Penang	1988	803
Canon Machinery (Malaysia) Sdn. Bhd.	Malaysia / Selangor	1995	190
Canon Hi-Tech (Thailand) Ltd.	Thailand / Ayutthaya	1990	7,288
Canon Prachinburi (Thailand) Ltd.	Thailand / Prachinburi	2011	5,612
Canon Business Machines (Philippines), Inc.	Philippines / Batangas	2011	3,172
Canon Vietnam Co., Ltd.	Vietnam / Hanoi	2001	18,551
Canon Electronics Vietnam Co., Ltd.	Vietnam / Hung Yen	2008	2,009

R&D, Software Subsidiaries and Affiliates

Company name	Location	Est.	Emp.
JAPAN			
Canon Imaging Systems Inc.	Niigata	1990	479
Canon IT Solutions Inc.	Tokyo	1982	4,000
TCS Inc.	Tokyo	1989	162
Canon Esquisse System Inc.	Tokyo	1994	13
Canon Electronics Technology Inc.	Tokyo	1970	427
AMERICAS			
Canon Nanotechnologies, Inc.	U.S.A. / Texas	2001	101
Arcules Inc.	U.S.A. / California	2017	85

Company name	Location	Est.	Emp.
EUROPE			
Canon Research Centre France S.A.S.	France / Ille-et-Vilaine	1990	48
Canon Ophthalmic Technologies Sp. z o. o.	Poland / Wroclaw	1992	30
NT-ware Systemprogrammierungs-GmbH	Germany / Bad Iburg	1998	116
MIDDLE EAST / AFRICA			
BriefCam Ltd.	Israel / Modi'in	2007	108
ASIA			
Canon Innovative Solution (Beijing) Co., Ltd.	PRC / Beijing	1998	50
Canon (Suzhou) System Software Inc.	PRC / Jiangsu	2002	109

1: Subsidiaries and affiliates accounted for by the equity method 2: As of October 31, 2023

Marketing Subsidiaries and Affiliates

Company name	Location	Est.	Emp.
JAPAN			
Canon Marketing Japan Inc.	Tokyo	1968	4,528
Canon System & Support Inc.	Tokyo	1980	4,555
Canon Production Printing Systems Inc.	Tokyo	2014	381
Ibaraki Marketing Systems Co., Ltd.	Ibaraki	2013	14
Canon Electronics Business Systems Inc.	Saitama	1984	30
Canon MEDTech Supply Corp.	Kanagawa	1956	241
AMERICAS			
Canon U.S.A., Inc.	U.S.A. / New York	1965	1,807
Canon Solutions America, Inc.	U.S.A. / New York	2013	4,058
Canon Financial Services, Inc.	U.S.A. / New Jersey	1979	306
Canon Business Process Services	U.S.A. / New York	2013	3,124
Canon Canada Inc.	Canada / Ontario	1972	820
Canon Panama, S.A.	Panama / Panama City	1968	122
Canon do Brasil Indústria e Comércio Ltda.	Brazil / São Paulo	1974	264
Canon Chile S.A.	Chile / Santiago	1994	129
Canon Mexicana, S. de R.L. de C.V.	Mexico / Mexico City	1978	322
Axis Communications Inc.	U.S.A. / Massachusetts	1988	563
Canon Medical Systems USA, Inc.	U.S.A. / California	1989	1,073
EUROPE			
Canon Europe Ltd.	U.K. / London	2000	776
Canon Europa N.V.	The Netherlands / Amstelveen	1982	572
Canon (UK) Ltd.	U.K. / London	1976	1,315
Canon (Ireland) Business Equipment Ltd.	Ireland / Dublin	1987	61
Canon France S.A.S.	France / Paris	1975	969
Canon Deutschland GmbH	Germany / Krefeld	1973	1,388
Canon Italia S.p.A.	Italy / Milan	1972	424
Canon Nederland N.V.	The Netherlands / 's-Hertogenbosch	1994	882
Canon Belgium N.V./S.A.	Belgium / Diegem	1978	450
Canon Luxembourg S.A.	Luxembourg	1979	44
Canon Austria GmbH	Austria / Vienna	1975	348
Canon CEE GmbH	Austria / Vienna	1994	99
Canon (Schweiz) AG	Switzerland / Wallisellen	1951	514
Canon Hungaria Kereskedelmi Kft.	Hungary / Budapest	1994	118
Canon Polska Sp. z o. o.	Poland / Warsaw	1994	240
Canon CZ spol s.r.o.	Czech Republic / Prague	1994	188
Canon Slovakia s.r.o.	Slovakia / Bratislava	2000	17
Canon Danmark A/S	Denmark / Soeborg	1999	210
Canon Norge AS	Norway / Oslo	1967	263
Canon Svenska AB	Sweden / Stockholm	1970	258
Canon Oy	Finland / Helsinki	1941	263
Canon ADRIA d.o.o.	Slovenia / Ljubljana	2006	11
Canon Bulgaria EOOD	Bulgaria / Sofia	2001	10
Canon Ukraine LLC	Ukraine / Kiev	2012	15
Canon Croatia d.o.o.	Croatia / Zagreb	2013	5
Canon Romania SRL	Romania / Bucharest	2020	12
Canon Ru LLC	Russia / Moscow	2004	24
Canon España S.A.U.	Spain / Madrid	1974	835
Canon Portugal S.A.	Portugal / Porto Salvo	2007	125
Milestone Systems A/S	Denmark / Copenhagen	1998	612
Canon Medical Components Europe B.V.	The Netherlands / Amstelveen	2022	20
Canon Medical Systems Europe B.V.	The Netherlands / Amstelveen	1981	283
MIDDLE EAST / AFRICA			
Canon Eurasia A.S.	Turkey / Istanbul	2007	126
Canon Middle East FZ-LLC	U.A.E. / Dubai	2001	239
Canon Emirates LLC	U.A.E. / Dubai	2007	113
Canon Office Imaging Solutions (Doha) LLC	Qatar / Doha	2014	41
Canon South Africa (Pty) Ltd.	South Africa / Centurion	1999	167
Canon Kenya Ltd.	Kenya / Nairobi	2013	15
Canon Nigeria Imaging Solutions Ltd.	Nigeria / Lagos	2016	15
Canon Saudi Arabia LLC	Saudi Arabia / Riyadh	2018	91
Canon Israel Imaging and Business Solutions Ltd.	Israel / Rehovot	2017	8

Company name	Location	Est.	Emp.
ASIA			
Canon (China) Co., Ltd.	PRC / Beijing	1997	1,202
Canon Hongkong Co., Ltd.	Hong Kong	1979	467
Canon Marketing (Taiwan) Co., Ltd.	Taiwan	2001	149
Canon Singapore Pte. Ltd.	Singapore	1979	766
Canon Marketing (Malaysia) Sdn. Bhd.	Malaysia / Selangor	1986	534
Canon Marketing (Thailand) Co., Ltd.	Thailand / Bangkok	1994	590
Canon Marketing (Philippines), Inc.	Philippines / Taguig City	1996	268
Canon India Pvt. Ltd.	India / New Delhi	1996	935
Canon Marketing Vietnam Co., Ltd.	Vietnam / Ho Chi Minh	2012	16
Canon Semiconductor Engineering Korea Inc.	ROK / Seoul	1993	495
Canon Optical Industrial Equipment (Shanghai) Inc.	PRC / Shanghai	2002	651
Canon Semiconductor Equipment Taiwan, Inc.	Taiwan	1997	498
Canon Medical Systems (China) Co., Ltd.	PRC / Beijing	2007	734
Canon Electron Devices & Materials (Shanghai) Co., Ltd.	PRC / Shanghai	2004	18
Canon Korea Inc. ¹	ROK / Seoul	1985	1,188
OCEANIA			
Canon Australia Pty. Ltd.	Australia / Sydney	1978	522
Canon New Zealand Ltd.	New Zealand / Auckland	1989	374
Canon Business Services Australia Pty Ltd.	Australia / Sydney	1994	525
Satalyst Pty Ltd.	Australia / Perth	2005	35

Other Related Companies

Company name	Location	Est.	Emp.
JAPAN			
Canon Technical Information Services Inc.	Tokyo	2003	85
Canon ITS Medical Inc.	Tokyo	1972	311
Canon BizAttenda Inc.	Tokyo	1985	289
Canon Business Support Inc.	Tokyo	1997	585
QB5 Inc.	Tokyo	2001	55
Primagest, Inc.	Kanagawa	1968	572
Canon Customer Support Inc.	Chiba	1996	770
Canon Medical Finance Co., Ltd.	Tokyo	1970	47
SPACE ONE Co., Ltd. ²	Tokyo	2017	46
AMERICAS			
Canon Healthcare USA, Inc.	U.S.A. / Ohio	2023	5
Canon Information Technology Services, Inc.	U.S.A. / Virginia	1998	291
EUROPE			
I.R.I.S. Group SA	Belgium / Louvain-la-Neuve	1987	150 ³
ASIA			
Canon Engineering Hong Kong Co., Ltd.	Hong Kong	1996	89
Canon MailCom Malaysia Sdn. Bhd.	Malaysia / Selangor	1982	166
OCEANIA			
Canon Finance Australia Ltd.	Australia / Sydney	1988	12

1: Subsidiaries and affiliates accounted for by the equity method
 2: Affiliate company accounted for by the equity method of Canon Electronics Inc.
 3: Total number of employees in the entire Group

YESTERDAY AND TODAY

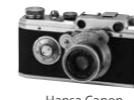
● History of business ● History of products

1930s – 1940s
Aiming to develop the world's best cameras

- 1933 ● Canon's predecessor, Precision Optical Instruments Laboratory, is founded in Roppongi, Minato-ku, Tokyo, to conduct research into quality cameras.
- 1934 ● The Kwanon, Japan's first 35 mm focal-plane-shutter camera, is produced in prototype form.
- 1935 ● The company files for registration of the "Canon" trademark.
- 1936 ● The Hansa Canon, a 35 mm focal-plane-shutter camera, is introduced.
- 1937 ● Precision Optical Industry, Co., Ltd. is founded.
- 1939 ● In-house production of Serenar Lens commences.
- 1940 ● Japan's first indirect X-ray camera is developed.
- 1942 ● Takeshi Mitarai is appointed president of Precision Optical Industry, Co., Ltd.
- 1945 ● Production commences for the midrange J II focal-plane-shutter camera.
- 1946 ● The Ginza Camera Service Station opens.
 - The Canon S II is introduced, receiving great acclaim from ranking officers in the Occupation Forces and foreign buyers in Japan.
- 1947 ● The company becomes Canon Camera Co., Inc.
 - Government designates Canon cameras priority exports when Japan resumes export activities.
- 1949 ● Canon shares are listed on the Tokyo Stock Exchange for the first time when postwar stock trading resumes.
 - Canon II B wins first prize at a U.S. national camera exhibition.



KWANON



Hansa Canon



Indirect X-ray camera



Takeshi Mitarai

1950s – 1960s
Undertaking the challenges of globalization and diversification

- 1951 ● Canon concentrates head office and manufacturing plants in Shimomaruko, Ohta-ku, Tokyo.
- 1952 ● Canon introduces the world's first speedlight-compatible 35 mm camera IV Sb.
- 1955 ● Canon's New York branch office is opened.
- 1956 ● Canon launches the 8 mm movie camera 8T.
- 1957 ● Canon Europa, the sole European distributor, is established in Switzerland.
 - The still camera L1 and 8 mm movie camera 8T are selected as Japan's first Good Design products.
- 1958 ● Canon launches a field zoom broadcast lens.
- 1961 ● "Electric-eye" boom is sparked by the introduction of the Canonet.
- 1962 ● Canon develops its first five-year plan in preparation for full-fledged entry into the business machine market.
 - Canon Latin America, the company's sole distributor for Latin America, is established in Panama.
- 1963 ● Canon SA Geneva (Switzerland) is established. By abolishing the sole-distributor system, Canon moves to a new sales system, with outlets under the direct control of the headquarters in Tokyo.
- 1964 ● The Canola 130, the world's first 10-key electronic calculator, is introduced.
- 1965 ● Canon U.S.A., Inc. is established.
- 1967 ● The 30th anniversary slogan—"Cameras in the Right Hand, Business Machines in the Left"—is announced.
 - Canon Latin America, Inc. is established.
- 1968 ● Canon Business Machines Sales, Inc. (now Canon Marketing Japan) is established in Japan.
 - Canon Amsterdam N.V. (now Canon Europa N.V.) is established.
 - The Canon NP System, proprietary electro-photography technology, is introduced and Canon enters the plain-paper copier market.



Factory at Shimomaruko Headquarters



Opening of New York office



8T



Canonet



Canola 130

- 1969 ● The company's name is changed to Canon Inc.
 - Canon Camera Sales Co., Inc. is founded for marketing in Japan.
 - The world's first lens employing fluorite is introduced.



NP-1100

1970s
Diversification and launch of the first Premier Company Plan

- 1970 ● Canon Inc., Taiwan, Canon's first manufacturing facility outside of Japan, is established.
 - Canon enters the personal calculator market.
 - The NP-1100, Japan's first PPC, is introduced.
 - PPC-1, Japan's first semiconductor lithography system, is introduced.
- 1971 ● Canon Business Machines Sales, Inc. and Canon Camera Sales Co., Ltd. merge to form Canon Sales Co., Inc.
 - The top-of-the-line SLR camera Canon F-1 and FD lens are introduced.
- 1972 ● Physotec GmbH (now Canon Giessen GmbH), Canon's first European manufacturing site, is established in Germany.
 - The NP-70, the world's first PPC with the liquid-dry system, is introduced.
- 1973 ● Canon Deutschland GmbH is established.
 - Japan's first full-color PPC is introduced.
 - A macro zoom lens for cinematography wins an Academy Award in the science and technology category from the U.S. Academy of Motion Picture Arts and Sciences.
- 1974 ● Takeo Maeda is appointed president of Canon Inc.
- 1975 ● Canon France S.A.S. is established.
 - Canon develops a laser printer.
- 1976 ● The first Premier Company Plan is launched. A committee is established to discuss Canon development, production and sales systems.
 - Canon (U.K.) Ltd. is established.
 - The AE-1 SLR camera with a built-in micro-computer is introduced, triggering an AE boom.
 - The CR-45NM, the world's first nonmydriatic retinal camera, is introduced.
- 1977 ● Ryuzaburo Kaku is appointed president of Canon Inc.
 - The K-35 series of lenses for cinematography wins an Academy Award from the U.S. Academy of Motion Picture Arts and Sciences.
- 1978 ● A product-specific business division structure is introduced.
 - Canon Australia Pty. Ltd. is established.
 - The NP-8500, the world's first retention-type copying machine, is introduced.
 - The PLA-500FA, the world's first mask aligner with a laser-based automatic alignment system, is introduced.
- 1979 ● Canon Singapore Pte. Ltd. is established.
 - Overseas sales exceed ¥100 billion for the first time.
 - The LBP-10, using a semiconductor laser, is introduced.



PPC-1



Takeo Maeda



AE-1



Ryuzaburo Kaku



LBP-10

1980s
Canon's second inauguration and introduction of the kyosei philosophy

- 1980 ● The Canoword 55, Japan's first word processor featuring Roman alphabet input, is introduced.
- 1981 ● The professional SLR system New F-1 is launched.
- 1982 ● The Second Premier Company Plan is launched.
 - The PC-10 and PC-20, the world's first personal copying machines with replaceable cartridges, are introduced.
- 1983 ● Canon Bretagne S.A.S. is established in France.
- 1984 ● Canon starts OEM supply of laser printers to Hewlett-Packard Co. (U.S.A.).
 - World's smallest and lightest laser beam printer, the LBP-8/CX, is launched.
- 1985 ● Canon Virginia, Inc. (U.S.A.) is established.



PC-10



LBP-8/CX

- The BJ-80, the world's first inkjet printer using Bubble Jet technology, is introduced.
- 1987 ● World's first digital full-color copying machine, the CLC-1, is introduced.
- The EOS autofocus SLR camera is introduced along with a range of EF lenses.
- 1988 ● Canon announces its second inauguration with the launch of the First Global Corporation Plan, which introduces the corporate philosophy of *kyosei*.
- Canon Opto (Malaysia) Sdn. Bhd. is established.
- 1989 ● Keizo Yamaji is appointed president of Canon Inc.
- Canon Dalian Business Machines, Inc. is established in the PRC.



BJ-80



EOS 650

1990s
Launch of the Excellent Global Corporation Plan

- 1990 ● Canon launches its toner cartridge recycling system.
- Canon Information Systems R&D Europe Ltd. (now Canon Research Centre France S.A.S.) is established.
- Canon Hi-Tech (Thailand) Ltd. is established.
- 1993 ● Hajime Mitarai is appointed president of Canon Inc.
- The Second Global Corporation Plan is initiated.
- Canon Group Environmental Charter is established.
- 1994 ● The Japan Institute of Invention and Innovation rewards Canon with the Imperial Award for Innovations for its Bubble Jet printing system.
- 1995 ● Fujio Mitarai is appointed president of Canon Inc.
- 1996 ● The Excellent Global Corporation Plan is initiated.
- The ELPH (IXUS in other regions), a 2x zoom compact camera with the Advanced Photo System, is introduced.
- 1997 ● Canon (China) Co., Ltd. is established.
- 1998 ● Canon forms the Management Reformation Committee.
- Canon commences Group-wide production reform activities.
- Copying machine remanufacturing commences in Japan. Canon thus maintains such operations in Europe, the U.S. and Japan.
- Canon Middle East B.V. is established in the U.A.E.



Keizo Yamaji



Hajime Mitarai



Fujio Mitarai

2000s
Pursuing digitization and No. 1 share in all major businesses

- 2000 ● Canon Inc. begins listing its American Depositary Receipts on the New York Stock Exchange (NYSE). (Delisted in March 2023)
- The PowerShot S100 DIGITAL ELPH (DIGITAL IXUS in other regions), a digital compact camera, is introduced.
- The iR series new-generation network MFD is introduced, providing document collation and distribution functions.
- 2001 ● Canon Europe Ltd. (U.K.) is established as the strategic headquarters for Europe.
- Canon Vietnam Co., Ltd. is established.
- 2002 ● Canon Inc.'s new headquarters building opens in Shimomaruko, Tokyo.
- The EOS-1Ds pro-model digital SLR camera is introduced.
- 2003 ● The EOS Kiss Digital (EOS 300D Digital and EOS Digital Rebel in other regions) entry-level digital AF SLR camera is introduced.
- 2004 ● Canon Ru LLC is established in Moscow, Russia.
- Igari Mold (now Canon Mold) becomes a wholly owned subsidiary.
- 2005 ● The Compliance Card is distributed to 110,000 Canon Group employees.
- ANELVA Corporation (now Canon ANELVA) is made a consolidated subsidiary.
- NEC Machinery Corporation (now Canon Machinery) is made a consolidated subsidiary.



ELPH / IXUS



Joining the NYSE



PowerShot S100 DIGITAL ELPH / DIGITAL IXUS



EOS DIGITAL REBEL / EOS 300D DIGITAL

- 2006 ● Canon receives the Imperial Award for Innovations for the invention of a large-screen sensor for real-time X-ray imaging systems.
- Canon Inc. appoints Fujio Mitarai as chairman and CEO, Tsuneji Uchida as president and COO.
- Chairman Fujio Mitarai is appointed the second chairman of the Japan Business Federation.
- Canon Sales Co., Inc. changes its name to Canon Marketing Japan Inc.
- 2007 ● Tokki (now Canon Tokki) becomes a consolidated subsidiary.
- Canon and the Kyoto Culture Association start the Tszuri Project to pass on Japanese cultural assets to future generations.
- Canon makes a full-scale entry into the commercial digital printer market by introducing the imagePRESS C7000VP.
- 2008 ● The Canon Institute for Global Studies and the Canon Foundation are established.
- The EOS 5D Mark II, the first camera ever to incorporate full HD video, is introduced.
- 2009 ● All headquarters functions of Canon Europe are consolidated in London.
- The imageRUNNER ADVANCE series of next-generation office network MFPs with enhanced IT environment integration is introduced.



Fujio Mitarai



Tsuneji Uchida



imagePRESS C7000VP



EOS 5D Mark II



imageRUNNER ADVANCE C5051



Cinema EOS System



Fujio Mitarai



Subaru Telescope



EOS M



DP-V3010

2010s
Challenge of growth and diversification in current businesses

- 2010 ● Océ (now Canon Production Printing) becomes a consolidated subsidiary.
- Fujio Mitarai is appointed president of the Rugby World Cup 2019 Organising Committee.
- 2011 ● Canon Prachinburi (Thailand) Ltd. is established.
- Canon Business Machines (Philippines), Inc. is established.
- Canon enters the motion picture production industry with the launch of the Cinema EOS System of cinema cameras and lenses.
- 2012 ● Fujio Mitarai is appointed president, in addition to chairman and CEO, of Canon Inc.
- The Subaru Telescope at the NAOJ Hawaii Observatory is equipped with a prime focus camera and lens unit enabling a wider field of view.
- Canon enters into collaborative research agreements with Massachusetts General Hospital and Brigham and Women's Hospital.
- The compact and lightweight mirrorless camera EOS M is introduced.
- Canon receives a Technology & Engineering Emmy® Award for improvements to large-format CMOS imagers for use in high-definition broadcast video cameras at the 64th Annual Technology & Engineering Emmy® Awards.
- 2013 ● Chairman Fujio Mitarai receives the Grand Cordon of the Order of the Rising Sun from the Emperor of Japan.
- Canon Solutions America, Inc. is established.
- Canon enters the 4K video production display market with the launch of the DP-V3010 30-inch 4K display for professional use.
- 2014 ● Fujio Mitarai is appointed Honorary President of the Tokyo 2020 Organising Committee of the Olympic and Paralympic Games.
- Canon makes Molecular Imprints, Inc. of U.S.A. (now Canon Nanotechnologies America) a wholly owned subsidiary.
- Canon Europe makes Milestone Systems (Denmark) a wholly owned subsidiary.

- Canon enters the machine vision market with the launch of the RV1100 3D Machine Vision System.
- 2015 ● Canon makes Axis Communications (Sweden) a consolidated subsidiary.
- 2016 ● Canon Inc. appoints Fujio Mitarai as chairman and CEO, and Masaya Maeda as president and COO.
- Toshiba Medical Systems (now Canon Medical Systems) becomes a wholly owned subsidiary.
- Co-development with Axis of the AXIS Q1659 interchangeable-lens network camera.
- 2017 ● Customer Experience Center Tokyo, a facility for experiencing Canon's commercial printing solutions, opens at Canon headquarters.
- Canon makes Miyazaki Daishin Canon Inc. (now Miyazaki Canon) a wholly owned subsidiary.
- Canon Electronics succeeds in launching the CE-SAT-1 micro satellite.
- Canon delivers the nanoimprint lithography system FPA-1200N2C to Toshiba Memory Corporation's (now Kioxia) Yokkaichi Operations plant.
- Canon develops the Free Viewpoint Video System.
- The Colorado 1640 UVgel wide format printer is introduced.
- 2018 ● The Canon Eco Technology Park opens to serve as a focal point of environmental activities.
- The software training facility Canon Institute of Software Technology is opened.
- Canon makes BriefCam Ltd. (Israel), a leading video analytics software developer, a wholly owned subsidiary.
- Canon launches a joint research project with the National Institutes for Cultural Heritage for the creation and use of high-resolution facsimiles of cultural properties.
- Canon introduces the EOS R System of full-frame mirrorless cameras, newly developed lens mount, and RF lenses.
- 2019 ● The instant camera printer IVY CLIQ+ ZV-123 is introduced.
- Fujio Mitarai is appointed chairperson of the Expo '90 Foundation.
- Canon Medical introduces the world's first MRI system featuring noise reduction reconstruction technology that utilizes deep learning.
- The native 4K laser projector REALIS 4K6021Z is introduced.
- Joint research begins with the Center for iPS Cell Research and Application, Kyoto University.
- Tomo-e Gozen, an astronomical observation system at Kiso Observatory, University of Tokyo, equipped with Canon's ultra-high sensitivity CMOS sensors, begins full operation.
- EOS series camera production reaches a total of 100 million units.
- The 8K broadcast lens UHD DIGISUPER 51 is introduced.
- Canon invests in the Japanese Organization for Medical Device Development.
- Development of video analytics technology for counting people in crowds.



RV1100



Fujio Mitarai



Masaya Maeda



AXIS Q1659



FPA-1200N2C



EOS R



IVY CLIQ+ ZV-123 / Zoemini S ZV-123



MRI system utilizing deep learning



REALIS 4K6021Z



Fujio Mitarai

2020s
Achieving grand strategic transformation

- 2020 ● Océ corporate name is changed to Canon Production Printing.
- The ME20F-SH ultra-high sensitivity multi-purpose camera is the recipient of the 71st Annual Technology & Engineering Emmy® Awards.
- Fujio Mitarai is appointed president, in addition to chairman and CEO, of Canon Inc.

- Canon develops the world's first 1-megapixel SPAD image sensor.
- Canon develops VisualSLAM technology and enters the mobile robot market.
- 2021 ● Remote network camera system that controls multiple cameras for video production is introduced.
- Fujio Mitarai is appointed president of the Scout Association of Japan.
- Canon introduces the full-frame mirrorless camera EOS R3 featuring a back-illuminated stacked CMOS sensor.
- Canon Medical starts joint research with National Cancer Center Japan for the development of photon-counting CT systems.
- Canon makes Redlen Technologies (Canada), a leader in X-ray imaging and detection, a wholly owned subsidiary.
- The EOS VR System for capturing VR video is launched.
- The Canon Group Human Rights Policy is established.
- The PowerShot PICK, a camera that controls recording processes and shoots automatically, is introduced.
- Canon Medical launches a CT diagnostic system featuring Precise IQ Engine (PIQE), a super-resolution reconstruction technology that utilizes deep learning.
- The world's first large-format printer GP series featuring aqueous fluorescent pigment inks is introduced.
- Canon develops a 3.2-megapixel SPAD sensor.
- 2022 ● Canon Optron develops oxide electrolytes.
- Canon Production Printing makes Edale (U.K.), a manufacturer of label and packaging presses, a wholly owned subsidiary.
- Lithography Plus, a solution platform that improves the efficiency of operating semiconductor lithography equipment, is introduced.
- AI Accelerator AS-AN11, which adds AI features/functions to Axis network cameras, is introduced.
- 2023 ● Canon Healthcare USA, Inc. (U.S.) is established.
- Canon Medical starts clinical research of a photon counting CT system with National Cancer Center Japan.
- The FH-300-20 thin, lightweight, and precise force sensor is introduced.
- The PowerShot V10, a vlogging camera for enjoying casual video recording, is introduced.
- The MS-500 ultra-high-sensitivity camera, with the world's first SPAD sensor for color photography, is introduced.
- The FPA-1200N2C semiconductor manufacturing system using nanoimprint lithography technology is introduced.
- Canon EXPO 2023, showcasing new products and future technologies, is held in Yokohama.
- The University of Tokyo, Canon Inc., and Canon Medical sign an industry-academia collaboration agreement.
- Cleveland Clinic (U.S.) and Canon Inc. agree to a strategic research partnership.



EOS R3



RF5.2mm F2.8 L DUAL FISHEYE for VR shooting



PowerShot PICK (PowerShot PX)



CT system with super-resolution reconstruction technology



3.2-megapixel SPAD sensor



FH-300-20



PowerShot V10



MS-500



FPA-1200N2C

For details on Canon's history, scan the QR code



PRIMARY CANON GROUP PRODUCTS

Printing

Unless otherwise specified, printing/copying speeds are for single-sided printing on A4 paper.

Continuous Feed Presses



ProStream 3000 series

- High production color web-fed press for commercial print and graphic arts
- IJ versatility, offset quality on coated/uncoated media up to 133 m/min.



ColorStream 8000 series

- High production color continuous feed press for books, mailings, etc.
- Inkjet versatility, offset quality on uncoated paper up to 160 m/min.

Sheet-Fed Presses



varioPRINT iX3200

- High production sheet-fed inkjet press
- iQuarius™ technologies for high quality on wide range of media



varioPRINT iX1700

- B3 color sheet-fed printer for commercial printing
- Newly developed head and ink ensure stable operation and print quality rivaling offset presses



varioPRINT 6000 series

- High-speed monochrome printer capable of printing up to 10 million pages per month
- Supports single-pass duplex printing and delivers print quality rivaling offset presses



imagePRESS V1350

- High production color press for wide-variety printing
- Quick turnaround, stable, reliable, durable. Output of 135 pages/min. (A4)



imagePRESS V1000

- Color production press for short-run, wide-variety printing
- High productivity for various printed materials with versatile paper support



LabelStream LS2000

- Canon's first water-based inkjet label printer designed for industrial printing
- Newly developed head and ink and a standard-equipped white ink can handle many label products

Large-Format Printers (Graphic Arts)



Colorado M-series

- 64-inch modular UVgel roll-to-roll printers
- Includes a white ink option for high-grade large-format printing on a wide range of media



Arizona series

- Large-format UV flatbed printers featuring VariaDot imaging technology
- Roll-to-roll media (option)
- Hard media up to 50.8 mm thick



imagePROGRAF TM-355

- A0-plus large-format printer for high-speed output of high-quality technical drawings and posters
- The flat-top design makes it easy to load paper rolls even in confined spaces



imagePROGRAF GP-4000

- 44-inch model, wide color gamut with aqueous fluorescent pigment ink
- "Radiant Infusion" technology allows the fluorescent ink to be layered with other inks on the paper surface for bright and vivid colors

Office Multifunction Devices



imageRUNNER ADVANCE DX C5870i

- A3 color multifunction device (70 ppm in color and black-and-white)
- Improved shorter warm-up time, low power consumption, quietness



imageRUNNER ADVANCE DX 4945i

- A3 black-and-white multifunction device (45 ppm)
- Industry-leading low power consumption and reduced unit weight



Color imageCLASS X MF1333C (C1333iF)

- A4 color multifunction device (33 ppm for color and black-and-white)
- Fast one-pass two-sided ADF scanner for efficient reception work



imageCLASS X LBP1871 (1871P)

- A4 black-and-white laser printer (71 ppm)
- High production with high-speed and high-volume paper feeding

Inkjet Printers



GX4020 (GX4050)

- Multifunction printer with high-volume refillable pigment ink tanks
- High-quality business printer with low operation cost and small footprint



G3270 (G3570)

- Entry-level inkjet multifunction printer with extra-large MegaTank
- Low-cost, high-productivity support for home workers and students



TR150

- Compact, lightweight mobile printer for printing on the go
- 5 GHz compatible Wi-Fi connection



IVY 2 PV-223 (Zoemini 2 PV-223)

- Mini photo printer for photo sticker printing of images shot by smartphones
- Bluetooth connection and dedicated app enable editing of photos

Compact Photo Printers

Solutions Software



PosterArtist for WEB

- For easy creation of posters and flyers
- Various templates for a wide range of applications



uniFLOW Online

- Scanned information is directly uploaded to the cloud service
- Personal authentication reduces data leakage risks

Calculators



HS-1220TUB/TS-122TUB/LS-122TUB

- 12-digit desktop calculator series for business applications
- Uses biomass plastic to meet Green Purchasing Act requirements

Cable ID Printers



MK5000/MK3000

- Prints ID on wires, tubes and power distribution panels
- Max. print speed 55 tubes/min.¹

Image Scanners



CanoScan LiDE 400

- Flatbed scanner with high-speed scanning capabilities
- One-touch uploading of data to the cloud for storage

Presenters



PR5000-C

- Ring-type page clicker for easy page flipping via Bluetooth and USB
- Made with anti-bacterial material

Color Label Printers



LX-D5500/LX-P5510 (LX-D5500/LX-P5500)

- Dye-based ink model for vibrant color labels; Pigment-based ink model for durable labels
- High-speed, full-color on-demand printing up to 200 mm/sec. (with LX-D5500)

Color Card Printers



CX-G6400/IX-R7000

- Suitable for different media ranging from paper to plastics
- High-speed printing of up to 100 cards/min.²

Medical

CT Systems



- Improves workflow by capturing images of the heart in a single rotation
- AI-based image reconstruction to produce sharper images at lower radiation dose

Diagnostic Ultrasound Systems



- High-performance cardiovascular diagnostic imaging system
- iBeam architecture supports high-quality examinations

Diagnostic X-ray Systems



- For examination of chest and abdomen cavities and full-body skeletal exams
- Auto-positioning technology for automated positioning with one action

MRI Systems



- MRI featuring AI-based noise reduction reconstruction technology³
- High-resolution and accelerated image acquisition

Office Multifunction Devices



imageRUNNER ADVANCE DX C5870i

- A3 color multifunction device (70 ppm in color and black-and-white)
- Improved shorter warm-up time, low power consumption, quietness



imageRUNNER ADVANCE DX 4945i

- A3 black-and-white multifunction device (45 ppm)
- Industry-leading low power consumption and reduced unit weight



Color imageCLASS X MF1333C (C1333iF)

- A4 color multifunction device (33 ppm for color and black-and-white)
- Fast one-pass two-sided ADF scanner for efficient reception work



imageCLASS X LBP1871 (1871P)

- A4 black-and-white laser printer (71 ppm)
- High production with high-speed and high-volume paper feeding

PET/CT



- Digital time-of-flight technology for improved diagnostic details
- 780 mm-wide bore offers a spacious feeling for a better patient experience

Clinical Laboratory Systems



- Offering fast and efficient sample processing
- Class-leading test bottle capacity for multi-item testing

POCT (Point-of-Care Testing)



- First point-of-care testing products for SARS-CoV-2 antigen quantitative measurement
- Measurements for 3 types of viruses can be performed in a single device

X-ray angiography system



- System that visualizes blood vessels in real time using X-rays
- Image processing leveraging AI provides superb image quality and streamlined workflows

Inkjet Printers



GX4020 (GX4050)

- Multifunction printer with high-volume refillable pigment ink tanks
- High-quality business printer with low operation cost and small footprint



G3270 (G3570)

- Entry-level inkjet multifunction printer with extra-large MegaTank
- Low-cost, high-productivity support for home workers and students



TR150

- Compact, lightweight mobile printer for printing on the go
- 5 GHz compatible Wi-Fi connection



IVY 2 PV-223 (Zoemini 2 PV-223)

- Mini photo printer for photo sticker printing of images shot by smartphones
- Bluetooth connection and dedicated app enable editing of photos

X-ray Imaging Systems



- Fluoroscopy for medical examinations, procedures, and treatment
- Clear and high-resolution fluoroscopic images with reduced dose

Medical Information Solutions



- Chronologically integrates patient treatment and examination information
- Produces optimal information arranged by doctor and treatment

Digital Radiography



- Supports wide range of general radiography from rad room to mobile exams
- Real-time detection to optimize X-ray exposure dose

AI Noise Reduction Technology



- Proprietary AI technology reduces image noise by up to 50%
- Real-time processing without disrupting conventional workflow

1: When printing 5 two-byte characters (3 mm width) on a 20 mm tube. 2: When printing JIS standard size business cards and plastic cards on CX-G6400. 3: The system itself does not have a self-learning function.

PRIMARY CANON GROUP PRODUCTS

Ophthalmic Equipment



- For tomographic images of the fundus, with wider and deeper range
- Wide-angle OCTA with noise reduction AI processing for high image quality

X-ray Tubes



- Compact ultra-high cooling X-ray tube using liquid-metal bearing technology
- High-power large focal spot, high-definition small focal spot, low dose

X-ray Image Devices



- High-quality X-ray images achieved by superior phosphor and beam focusing
- Contributing to low-dose operation for mobile C-arm X-ray system

Microwave Tubes



- Compact and efficient radiotherapy equipment components for cancer treatment using PPM permanent magnets



EOS R5

- Approx. 45MP image quality, 20 fps continuous high-speed shooting
- World-first* 8K recording and 8.0-stop image stabilization for comfortable shooting



EOS R50

- Realizes high image quality in a compact and lightweight body
- Auto function enables beginner vloggers to shoot movies and still images



EOS VR SYSTEM

- Enables high-quality stereoscopic 3D 180° VR shooting
- Supports efficient workflow from shooting to editing for video production



RF/EF Lenses

- Broad lineup, from ultra-wide angle to super telephoto, for use with EOS series cameras
- High image quality achieved by superior optical technology

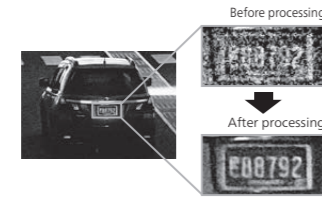
Imaging

Ultra-High-Sensitivity Cameras



MS-500

- Equipped with a 1.0-inch SPAD sensor with pixel count of approx. 3.2 megapixels¹
- Captures clear, full-HD color images even in the dark and at long distances



Video Enhancement Software

- Video Enhancement Software designed for our series of ultra-high-sensitivity cameras
- Improves video visibility with AI-powered noise reduction and other processing functions

Network Cameras



VB-H47

- High-performance PTZ model with 20x optical zoom lens
- Outstanding low-light performance; features WDR function



AXIS Q3626-VE Dome Camera

- 4 MP dome with deep learning
- Remote pan-tilt-roll-zoom functionality

Digital Compact Cameras



PowerShot G7 X Mark III

- Premium model with livestreaming capabilities
- Featuring 4K and vertical video shooting

New Concept Cameras



PowerShot ZOOM

- New telephoto concept camera integrating "viewing" and "shooting"
- Palm-size telephoto camera with 100 mm/400 mm optical zoom



PowerShot V10

- Vlogging camera with a vertical, smartphone-shaped compact body
- Features a 1.0-inch CMOS sensor and a large-diaphragm mic for high-quality video and audio

Online Services



image.canon

- Cloud platform that connects with camera
- Images can be transferred to PCs, smartphones and other web services



AXIS P3738-PLE Panoramic Camera

- 4x 4K multidirectional camera with deep learning for all sensors
- 360° IR illumination with individually controlled LEDs

Video Content Analytics Software



Crowd People Counter for Milestone XProtect

- Counts thousands of people in real time
- Possible to specify and count multiple areas



AI Accelerator AS-AN11

- Accelerator on a microSD card that adds intrusion detection and other AI functions to AXIS network cameras (Japanese market only)



Vision-based Navigation Software

- Video content analytic software for mobile robots
- Spatial position detection using stationary objects as markers

Compact Photo Printers



SELPHY CP1500

- High-quality prints with superb durability
- Easy printing via simple connection to smartphones and PCs

Digital Cinema Cameras



EOS R5 C

- Full-frame sensor and internal 8K / 60P RAW recording that marks a significant advancement over the EOS R5
- Equivalent to EOS R5 still performance in resolution and speed

Digital Camcorders



XF605

- Professional 4K camcorder featuring high mobility and connectivity
- High-quality 4K/60P 4:2:2 10-bit HDR recording

RF Cinema Lenses



Prime Lens Series

- Fully manual prime lenses with RF mounts and support for the RF communications protocol
- Excellent optical performance suitable for 8K cameras



BriefCam Video Analytics Platform

- Search, alert on, and visualize video metadata for enhanced investigations, situational awareness, and operational insights from video

Video Management Software



Milestone XProtect®

- Industry-leading video management software based on a true open platform
- Compatible with a wide range of systems

Video Surveillance as a Service



Arcules VSaaS

- Monitor and control multiple sites from a secure web portal with intelligent enterprise video
- Simple subscription model reduces financial risk and complexity

Infrastructure Inspection Service



Infrastructure Inspection Service

- Cloud-based AI service that detects cracks from images, designed for bridge and tunnel inspections
- Also detects defects such as efflorescence, spalling, rusty fluid, and rebar exposure

Studio / Field Zoom Lenses for 4K Broadcasting



UHD DIGISUPER 122 AF

- High-speed, high-precision AF function
- 122x zoom magnification and a focal length range from 8.2 mm at the wide-angle end to 1,000 mm at the telephoto end (at 1x zoom)

4K Professional Displays



DP-V2730

- Professional 27-inch 4K HDR display
- HDR compatibility with wide color gamut, wide viewing angle and deep blacks

Remote Cameras



CR-N700

- Flagship indoor 4K/60P HDR remote camera
- Accurate autofocus featuring subject recognition with eye/head detection

Remote Camera Software



Auto Tracking Application

- Automatically tracks subjects according to the movement of people
- Many adjustments, including tracking target size, tracking target display position, and auto zoom

Industrial Software



Vision Edition 2

- Video analytics software for automatic inspection, testing, and DX in manufacturing and logistics
- Works seamlessly with many video input devices, video management software, and peripheral devices

MR Systems



MREAL X1

- Largest display area in the MREAL series
- Better verification efficiency, life-like graphics promote DX for industry

Interchangeable-Lens Digital Cameras



EOS-1D X Mark III

- High-speed continuous shooting of up to 20 fps, high-precision AF
- Wireless connectivity and enhanced operability for professionals

Mirrorless Cameras



EOS R3

- High sensitivity and high-speed shooting of max. 30 fps with AF/AE tracking
- Back-illuminated stacked 35 mm full-frame CMOS sensor

Binoculars



10x20 IS

- Compact, lightweight model for portability and high performance
- Shift-System Image Stabilizer using EF lens optical technology

Vapor Deposition



OR-510

- Fluorine-free coating material enables easy removal of water
- Non-use of PFAS makes it compliant with fluorine regulations

Oxide Electrolytes



Oxide Electrolytes

- High conductivity and can be sintered at low temperature
- Possesses atmospheric stability

Optical Crystals



Fluorite (CaF₂)

- Excellent optical characteristics including low dispersion and anomalous dispersion
- Used in EF lenses and broadcast lenses

1: Approximately 3.2 total megapixels / Approximately 2.1 effective megapixels

2: Among digital ILCs as of July 8, 2020 (Based on a Canon survey).

PRIMARY CANON GROUP PRODUCTS

Industrial / Others

Semiconductor Lithography Equipment

Featuring fast and accurate wafer maneuvering stages and ultra-high-precision wafer positioning technologies.



FPA-6300E56a

- Super-high throughput of 300 wafers/hour¹ or more
- Designed for mass production of memory, logic and image-processing devices



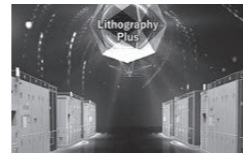
FPA-5520iV LF2 Option

- i-line lithography equipment designed for back-end processes
- Processes large 100 x 100 mm, high-density wiring packages



FPA-1200NZ2C

- Uses nanoimprint lithography technology that forms circuit patterns much like a stamp
- Reduces environmental impacts by forming advanced device patterns with a simple equipment layout



Lithography Plus

- Maximizes productivity of semiconductor lithography equipment
- Optimizes manufacturing settings; provides data of system operation status

OLED Panel Manufacturing Equipment

Mass-produces smartphone and television display panels with vacuum deposition technology.



System-ELVESS

- Manufactures high-resolution display panels with vacuum deposition through mask
- Manufactures versatile panels in terms of panel sizes and types of final products

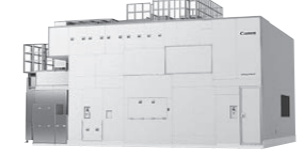
FPD (Flat Panel Display) Lithography Equipment

Exposes micrometer-scale pixel circuits on glass substrates to support high-definition smartphones and large TV panels.



MPAsp-H1003H

- High-resolution and productivity for Generation 8 glass substrates
- Ability to manufacture from high-definition IT panels to 65-inch panels



MPAsp-E903T

- Resolving power of 1.2 μm or smaller, suitable for manufacturing small and medium-sized HD displays
- Multiple illumination modes enable efficient and optimal production of all kinds of circuit patterns

MRAM Sputtering Equipment

Mass-produces next-generation magnetoresistive random-access memory (MRAM).



NC7900

- Achieves 200% MR ratio² for perpendicular MTJ³
- High throughput of 20 wafers/hour or more

Atomic Diffusion Bonding Equipment

Achieves high-strength wafer bonding without applied heat or load force in an ultra-high vacuum.



BC7000

- Auto vacuum operation for transfer, deposition, bonding and collection
- High bonding strength at room temperature and zero pressure

Die Bonding Equipment

Quickly and precisely bonds IC chips to lead frames.

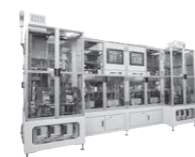


BESTEM-D540

- Capable of handling 12-inch wafers for power devices
- Suitable for automotive devices with high-quality solder bonding

Substrate Coining Equipment

Presses to flatten solder bumps on circuit boards with high precision.



HPM-45000

- Automatic head leveling to reduce height deviation
- Capable of high load and high precision due to miniaturization and higher density of solder bump

Compact 3D Machining Centers

High-precision 3D machining in a compact, space-saving design.

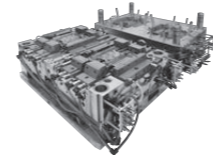


MF-150A Mark II

- Improved algorithm realizes shorter production times
- 100 V power source enables operation in any location

Injection Molds

Supports mass production of plastic products and components in such industries as automotive and medical.

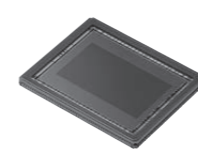


Injection Molds

- Precision injection molds that achieve high durability and high productivity
- Custom manufacturing of technically difficult molds

CMOS Sensors

Advanced image sensors that are the core devices in digital cameras.



LI5030

- Equipped with a global shutter
- Achieves high sensitivity and high image quality with 19 megapixels, 58 fps high-speed shooting and 6.4 μm pixel size

Contact Image Sensors

Image reading device used in image scanners and other products.



Contact Image Sensors

- Image reading sensor unit that includes lenses and sensor IC
- Accurate scanning for banknote readers and industrial flaw detection

Handy Terminals

Contributes to the efficiency of mobile businesses conducting meter readings, route sales and more.



GT-50

- Supports Windows 10, enabling use in various businesses
- Equipped with large 5-inch LCD color touch panel display

Individual Verification Card Readers

Helps financial institutions authenticate individuals by reading Individual Number Cards or other ID cards.



ID-MY2

- Reads Individual Number Cards and other official ID cards
- Reads cash cards and facilitates bank transfer procedures

TAB Flexible Boards

Flexible boards that can be produced in long lengths with the reel to reel method.



TAB Flexible Boards

- High production efficiency and low cost of mass-produced products
- High quality because no human hands are involved in the production process

Gyrotrons

High-power microwave devices for plasma heating in the ITER fusion reactor.



E39104

- 1 Megawatt output using a diamond window
- Recovering energy increases power and makes equipment small and efficient

Digital Galvano Scanners

Used for high-precision laser scanning in such devices as laser markers and 3D printers.



GM Series

- Precision encoder and digital controls enable high positional repeatability
- Enhanced lineup that can meet various laser processing needs

Laser Drilling Scan Systems

Enables a variety of micro processing with non-thermal ablation process of ultra-short pulse laser.



MA-1010 Series

- Wide range of output angles; high processing speed; proprietary optical technology
- Flexible processing position and angle shift

Air Bearings

For use in semiconductor manufacturing equipment.



Air Bearings

- High stiffness, damping and load capacity for long-lasting rotational accuracy
- Enables production of spindles with built-in motors

Small Injection Molding Machines

Provides layout-free inline molding capability.



LS-300/LS-715/ML-100

- Compact design, low energy and material consumption
- Dedicated cassette molds facilitate quick changing and processing

Dental Milling Machines

High-speed, high-precision operation achieved through application of industrial machining technology.



MD-500/MD-500W

- Compact and high rigidity
- Easy usability designed for daily operation

Food Waste Decomposers for Business Use

Significantly reduces garbage mass using hybrid biochemical and drying process method.



Land care 16 II

- Can handle continuous garbage disposal, similar to a trash can
- Hygienic automatic bagging function

Satellites

Enables earth and astronomical observations from space.



Space Telescopes

- Super-telephoto optical system for high-resolution photos of Earth and outer space
- Customizable for various purposes

Energy-Efficient Cryopump

Used for vacuum exhaust in semiconductor and electronic device manufacturing equipment.



POWEReco Series

- High energy savings from reduced power consumption and water needed for cooling
- Lower regeneration time

Document Scanners

A key information input device for quickly digitalizing documents.



DR-S250N

- Install-free browser scanning that fits well in any workplace
- OLED display lets you customize content

Mobile Printers

For various printing needs anywhere, even outdoors.



BP-F400

- Compact and lightweight: 254 mm (W), 55 mm (D), 30 mm (H) (approx. 580 g)
- A4-size thermal paper printing

Light & Speaker

Spot lighting and high fidelity sound for a deep and immersive experience.



Light & Speaker

- 360° surround experience of clear, rich sound
- Arm and light can be moved smoothly with one hand

3D Automated Wire Bonding Inspection Equipment

Aids the automation and efficiency of device inspections in wire bonding processes.



BESTEM-V110

- Has 3D measurement functions for external inspections with few false positives
- Supports a wide range of inspections including wire loops and bonding shapes

1: 300 mm wafers, 96 shots, with Grade 10 options applied. 2: Magneto ratio. Refers to the change in ratio of magnetic resistance. 3: Magnetic Tunnel Junction. The magnetic resistance of components changes due to the Tunnel Magneto-Resistance (TMR) effect.

● Some products in this publication may not be available in certain regions.

Canon

CANON INC.

30-2, Shimomaruko 3-chome, Ohta-ku, Tokyo 146-8501, Japan

©Canon Inc. 2024 PUB.AEP048 0724