

# SIEM INTEGRATION

## WHAT IS SIEM?



- 1 SIEM allows companies to help **identify internal and external threats** on a number of levels: threat intelligence, mobile security, and cloud security.
- 2 SIEM allows automated **real-time monitoring** of large amounts of data to provide alerts, analytics, and historical analysis for **incident investigation** and **compliance reporting**.

## A FEW FACTS ABOUT SIEM

The SIEM market grew to **\$2.18 Billion\*** in 2017.



SIEM systems are the fastest growing segment of the security market – growing by **15 - 20%** each year.\*

There is so much data to monitor. The Global Datasphere will grow from **33 Zettabytes in 2018** to **175 Zettabytes by 2025.\***

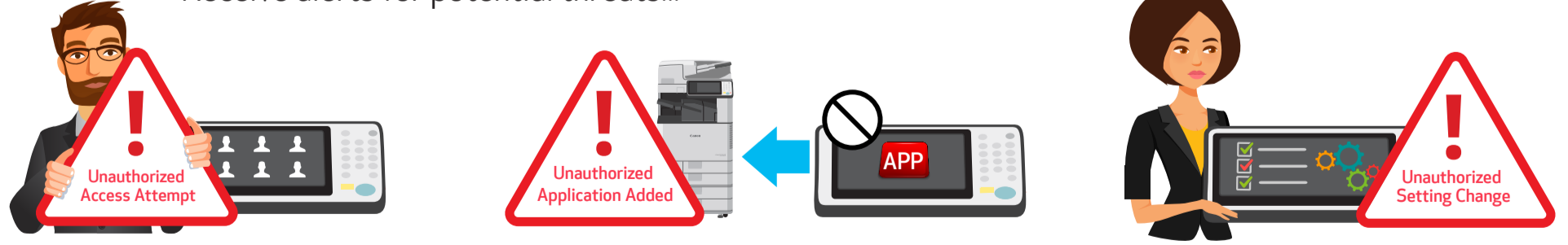
1,000,000,000,000 GB = **1 ZB**

\* Gartner, 2018 Magic Quadrant for Security Information and Event Management (SIEM) Solutions.  
\*\* IDC White Paper, sponsored by Seagate, Data Age 2025: The Digitization of the World from Edge to Core, November 2018.

## ARE YOU INCLUDING YOUR MFPs INTO SIEM MONITORING?



Receive alerts for potential threats...



[usa.canon.com/simplyadvanced](http://usa.canon.com/simplyadvanced)

Canon products offer certain security features, yet many variables can impact the security of your devices and data. Canon does not warrant that use of its features will prevent security issues. Nothing herein should be construed as legal or regulatory advice concerning applicable laws; customers must have their own qualified counsel determine the feasibility of a solution as it relates to regulatory and statutory compliance. Third-party SIEM system required. Subject to third-party SIEM system terms and conditions. Canon cannot ensure compatibility with all third-party SIEM systems. Canon and imageRUNNER are registered trademarks of Canon Inc. in the United States and may also be registered trademarks or trademarks in other countries. All other referenced product names and marks are trademarks of their perspective owners are hereby acknowledged. Specifications and availability subject to change without notice. Certain images simulated. Not responsible for typographical errors.  
©2019 Canon U.S.A., Inc. All rights reserved.  
0219-SIEM-CR