



Color
imageCLASS
MF654Cdw

Color imageCLASS MF654Cdw

Print | Scan | Copy

Print up to 22 ppm¹

Print up to 8-1/2" x 14"

250-sheet maximum paper capacity

Three-year limited warranty standard²



Designed for small and medium-size businesses, the imageCLASS MF654Cdw multifunction laser printer balances speedy performance and minimal maintenance. The MF654Cdw is easy to set up and offers media versatility to print on a variety of media types and sizes, including envelopes, banners, and more.



The customizable, 5" color touchscreen delivers an intuitive user experience.



Produce crisp, colorful documents with fast print speeds of up to 22 pages per minute¹, using high quality Canon Genuine Toner 067 / 067 H.



The MF654Cdw offers a plain paper capacity of up to 250 sheets, 1-sheet multipurpose tray, and 50-sheet simplex automatic document feeder.



Use PosterArtist Online to create professional quality posters, banners, and signage.



Easily connect and print through high-speed USB, Ethernet, or wirelessly³ from computers or compatible mobile devices.⁴



Print using a variety of mobile apps, including the Canon PRINT Business app⁴ using your compatible mobile device.



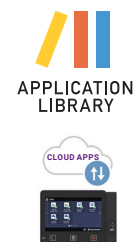
The MF654Cdw comes with a three-year limited warranty² and is backed by Canon's Service and Support network.



* Printer Screen May Vary.

CUSTOMIZABLE, 5-INCH COLOR TOUCHSCREEN

Easily access the features you use the most with Application Library. Application Library's Cloud App feature also supports cloud storage directly from an external webpage. Print or scan⁵ documents directly to or from DropBox, Google Drive, or OneDrive.



* Printer Screen May Vary.

EASY Wi-Fi^{®3} SETUP

- 1) Press "Wireless LAN" Button
- 2) Select "Network"
- 3) Enter Encryption Key/Password
- 4) Finalize

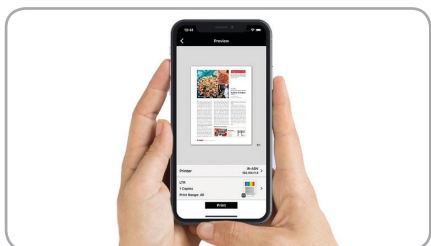


BRING YOUR IDEAS TO LIFE WITH POSTERARTIST*

Create professional quality posters and flyers with PosterArtist online; an easy-to-use, free, template-driven poster creation application.

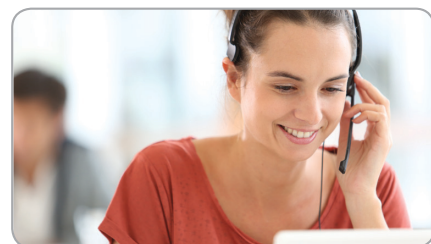


*PosterArtist online version requires a personal computer with Internet access and a compatible Canon printer. The service is not available on some operating systems or browsers. See usa.canon.com/PosterArtist for details.



MOBILE PRINTING⁴

Print on-the-go with Canon PRINT Business, Apple[®] AirPrint[®], and Mopria[™] Print Service. Compatible with select versions of Windows OS, Mac OS, and Chromebook OS.



SERVICE AND SUPPORT

Canon U.S.A. takes pride in delivering complete customer satisfaction. Canon's friendly and knowledgeable Customer Service Team provides expert assistance for every level of experience, offering the support, peace of mind, and value your business deserves.⁶



SPECIFICATIONS

Main Unit

Core Functions

Standard: Print, Copy, Send (Lite)

Item Code

5158C005

Processor

Canon Custom Processor

Control Panel

5" Color Touch Panel

Memory

1 GB

Standard Interface Connection

USB 2.0 x2 (Host), USB 2.0 x1 (Device) High-Speed,
10/100/1000Base-T Ethernet (Network), Wi-Fi®
802.11b/g/n³, Wi-Fi Direct Connection

Paper Capacity (Letter, 20 lb. Bond)

Standard: 250 Sheets

Paper Sources (Letter, 20 lb. Bond)

Standard: 250-sheet Paper Cassette,
1-sheet Stack Bypass

Paper Output Capacity (Letter, 20 lb. Bond)

Standard: 75 Sheets

Supported Media Types

Cassettes: Thin, Plain, Recycled, Color, Thick, Coated,
Label, Letter, Envelope (10 Envelopes)
Stack Bypass: Thin, Plain, Recycled, Color, Thick, Coated,
Label, Letter, Envelope (1 Envelope)

Supported Media Sizes

Cassettes: Letter, Legal, Statement, Executive
Envelope: COM10, Monarch, C5, DL
Custom (Min. 3" x 5" to Max. 8.5" x 14")
Stack Bypass: Letter, Legal, Statement, Executive
Envelope: COM10, Monarch, C5, DL
Custom (Min. 3" x 5" to Max. 8.5" x 14")

Supported Media Weights

Cassettes: 16 lb. Bond to 53 lb. Bond (60 to 200 g/m²)
Stack Bypass: 16 lb. Bond to 53 lb. Bond (60 to 200 g/m²)

Warm-up Time

From Power On: 13 Seconds or Less
From Sleep: 6.1 Seconds or Less
Mode:

Dimensions (W x D x H)

Standard: 17.8" x 18.2" x 16.3"
(Desktop):
Box: 23.1" x 22.4" x 21.0"

Installation Space (W x D x H)

Standard: 23.4" x 23.0" x 21.3"
(Desktop):

Weight⁷

Unit: Approx. 48.5 lb.
Boxed Weight: Approx. 64 lb.

Supported OS

Windows® 7/Windows 8.1/Windows 10/Windows 11/
Windows Server 2008/Windows Server 2008 R2/
Windows Server 2012/Windows Server 2012 R2/
Windows Server 2016 /Mac OS X v10.9.5 (or later)

What Comes In The Box

imageCLASS MF654Cdw Printer, Canon Genuine Toner
067 CMY (Starter, 680 yield) Black (Standard, 1,350
yield), Power Cord, Documentation

Print Specifications

Printing Method

Laser Beam Printing

Print Speed¹

Up to 22 ppm (Letter); Up to 17.9 ppm (Legal)

First-Print-Out Time

Approx. 10.3 Seconds

Recommended Monthly Page Volume

150 to 2,500 Pages

Print Resolution (dpi)

Up to 1200 x 1200

Standard Page Description Languages

UFR II

Double-Sided Printing

Automatic (Standard)

Direct Print

Available from USB Memory (JPEG, TIFF, PDF)

Printing from Mobile and Cloud-based Services²

Apple® AirPrint®, Canon PRINT Business, Mopria™
Print Service

Copy Specifications

Copy Speed

Up to 22 ppm (Letter); Up to 17.9 ppm (Legal)

First-Copy-Out Time (Letter)

Platen: 11.2 seconds/13.1 seconds (BW/Color)
ADF: 12.1 seconds/14.2 seconds (BW/Color)

Copy Resolution (dpi)

Up to 1200 x 1200

Copy Size

Platen: Up to Letter
ADF: Up to Legal

Multiple Copies

Up to 999 Copies

Magnification

25% - 400% (1% Increments)

Preset Reductions

25%, 50%, 64%, 78%

Preset Enlargements

129%, 200%, 400%

Copy Features

Paper Setting, Favorite Setting, Two-sided, Original Type
Selection, Cancel, N-on-1, Density Adjustment, Sharpness,
Erase Frame, Collate, Copy ID Card

Scan Specifications

Type

Simplex Scanning Automatic Document Feeder

Document Feeder Paper Capacity

50 Sheets (20 lb. Bond)

Document Feeder Supported Media Sizes

Legal, Letter, Statement

Document Feeder Supported Media Weights

13-28 lb. Bond (50-105 g/m²)

Platen Acceptable Originals

Sheet, Book

Pull Scan

ScanGear MF for TWAIN, and WIA

Scan Resolution (dpi)

Up to 300 x 600, 600 x 600

Scan-to-Mobile Devices

Canon PRINT Business

Scan Speed (Letter)

Single-sided: 28 ipm (Color/BW)

Memory Media

Standard USB Memory (JPEG, TIFF, PDF)

Security Specifications

Authentication

Standard: Department ID Authentication

Network

Standard: TLS1.3, IPsec, IEEE802.1X authentication,
SNMPv3, Firewall Functionality (IP/MAC
Address Filtering), Enabling/Disabling
(Network Applications, Remote UI, USB
Interface), USB Port separation from LAN

Document

Standard: Print Security (Secure Print, Encrypted
Secure Print), Scan Security (Encrypted
PDF, Device Signature PDF/XPS)

Wi-Fi Authentication Methods

Wi-Fi: 128(104)/64(40) bit WEP, WPA-PSK
Infrastructure (TKIP/AES-CCMP), WPA2-PSK
Mode: (TKIP/AES-CCMP)
Wi-Fi
Access Point: WPA2-PSK (AES-CCMP)

Environmental Specifications

Operating Environment

Temperature: 50 to 86 °F
Humidity: 20 to 80% RH (no condensation)

Power Requirements

AC110-127V: 4.5A, 60Hz

Power Consumption

Maximum: Approx. 900 W or less
Standby: Approx. 10.5 W
Sleep Mode: Approx. 0.8 W
Typical: 0.22 kWh
Electricity
Consumption
(TEC) Rating:

Standards

ENERGY STAR® Qualified, Rated EPEAT Silver®

SERVICE PLANS AND CONSUMABLES



Color imageCLASS MF654Cdw

Extended Service Plans Available For Purchase

Canon eCarePAK (Exchange/Carry-In)

Canon extended service plans extend standard three-year limited warranty² support to cover an additional one or two years.

One-Year: 5707B042

Two-Year: 5707B043

If service is required, you may receive a replacement model⁶ via advanced exchange. In this case, you'll be instructed to return the malfunctioning unit to Canon in the replacement packaging, which also includes a prepaid shipping label. Or you may choose to carry your existing equipment to a local Authorized service facility for repair.

GENUINE® CONSUMABLES

Always look for the Canon anti-counterfeiting hologram on your Canon GENUINE product packaging.



Cartridge	Item No.	Yield
067 Cyan	5101C001	1,250 Pages
067 Magenta	5100C001	1,250 Pages
067 Yellow	5099C001	1,250 Pages
067 Black	5102C001	1,350 Pages
067 H Cyan	5105C001	2,350 Pages
067 H Magenta	5104C001	2,350 Pages
067 H Yellow	5103C001	2,350 Pages
067 H Black	5106C001	3,130 Pages

Use of Canon GENUINE toner cartridges helps provide longer equipment life, high yields, reliable performance, high-quality output, and minimal jamming or issues.

¹ Print speed is based on internal testing. Print speed may vary, depending on the number of copies selected as well as the settings for size, type, and orientation of paper.

² Warranty program is subject to certain conditions and restrictions. See warranty card for details.

³ Wireless printing requires a working network with wireless 802.11b/g or 802.11n capability.

Wireless performance may vary based on terrain and distance between the printer and wireless network clients.

⁴ Canon PRINT Business is a free app available on the App Store® and Google Play™ Store. For more information, including compatibility, please visit <https://www.usa.canon.com/mobile-app>. Please see the respective websites for Apple AirPrint and Mopria Print Service for compatibility and additional information.

⁵ Subscription to a third-party cloud service is required and subject to third-party terms and conditions.

⁶ Replacement model may be new or refurbished quality.

⁷ Includes consumables.

⁸ For latest EPEAT ratings (Gold/Silver/Bronze), please visit: <http://www.epeat.net>.

Canon

usa.canon.com



As an ENERGY STAR partner, Canon U.S.A., Inc. has qualified these models as meeting the ENERGY STAR energy efficiency criteria through an EPA recognized certification body. ENERGY STAR and the ENERGY STAR mark are registered U.S. marks. Canon, imageCLASS, and the GENUINE logo are registered trademarks of Canon Inc. in the United States and may also be registered trademarks or trademarks in other countries. Wi-Fi is a registered trademark of the Wi-Fi Alliance®. Android, and Google Play are trademarks of Google Inc. iPad, iPhone, iPod touch, Mac, and the App Store are trademarks of Apple Inc., registered in the United States and/or other countries. AirPrint and the AirPrint logo are trademarks of Apple Inc. Mopria and the Mopria logo are trademarks of the Mopria Alliance, Inc. Windows and Windows Server are trademarks of Microsoft Inc. in the United States and/or other countries. Canon products offer certain security features, yet many variables can impact the security of your devices and data. Canon does not warrant that use of these features will prevent security issues. Nothing herein should be construed as legal or regulatory advice concerning applicable laws; customers must have their own qualified counsel determine the feasibility of a solution as it relates to regulatory and statutory compliance. All other referenced product names and marks are trademarks of their respective owners. Specifications and availability subject to change without notice. Not responsible for typographical errors.

©2023 Canon U.S.A., Inc. All rights reserved.

 PosterArtist

