

**Canon**

imageFORCE  
8105/8195/8186

# THE POWER OF NEXT



- Black-and-white A3 Multifunction Printer
- Prints up to 105 ppm (BW, Letter)
- Scans up to 270 ipm  
(300 dpi BW/Color Duplex)
- Up to 2400 x 2400 dpi Print Resolution

*imageFORCE 8186 shown with optional accessories.*

# THE POWER OF NEXT

To push the boundaries of what's possible, you must be bold. The **Power of Next** represents Canon's latest phase of ambitious and advanced print innovation with the comprehensive line-up of imageFORCE technology. This highly productive lineup is designed to help you **print better, do more, and stay ahead** in today's digital workplace. Backed by a strong commitment to the *Kyosei* philosophy—which promotes living and working together for the common good—Canon ushers in a new era of printing.

## imageFORCE 8100 SERIES

The imageFORCE 8100 series is built for high-volume environments that demand speed, reliability, and outstanding black-and-white print quality with professional finishing features. This series is designed for industries where both efficiency and professional-grade output are critical and seamlessly integrates into fleet environments alongside other imageFORCE models.

### Performance for Any Pace



**105 ppm**

Optimal for multi-user settings and environments requiring high print volumes, precise scanning, and digital workflow integrations.



**95 ppm**

Best suited for workflows in large departments and print shops with increased demand for higher volume printing and scanning.



**86 ppm**

Ideal for users printing and scanning in busy professional settings, such as dynamic co-working spaces.



# PRINT BETTER

## REMARKABLE QUALITY AND RELIABLE RESULTS

Achieve sharp prints with advanced precision, high contrast black-and-white quality, and the trusted performance Canon is known for.

### HIGH IMAGE QUALITY



#### R-VCSEL Imaging Laser

Canon's advanced 32-beam R-VCSEL laser helps deliver up to 2400 x 2400 dpi print resolution, outputting detailed black-and-white images with outstanding definition at high speeds.



#### Outstanding Precision:

Imaging technologies that deliver production-level quality, producing sharp and uniform images with deep black-and-white tones.



#### Accurate Front to Back Registration:

Drawers are equipped with additional fixing knobs and guides to help media feed straight and with minimal skew.



### BLACK-AND-WHITE THAT PERFORMS. COLOR SCANNING THAT DELIVERS.

Performance doesn't need to stop at print. This highly capable monochrome device is built to help boost your productivity—empowering your workforce to handle everyday tasks with speed, accuracy, and smart document handling, from start to finish.

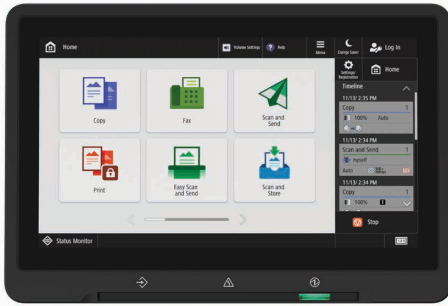
### HELP EXPAND PRINT EFFICIENCY WITH WORKFLOW SOLUTIONS

Manage tasks, track costs, and print and scan all on one platform with the optional uniFLOW Online, a powerful cloud-based solution that is designed to help reduce IT workload and adds flexibility to your print environment.

# DO MORE

## INTUITIVE WORKFLOWS FOR EVERYDAY USE

Help elevate daily efficiency with seamless workflows, simple and intuitive print technology, integrated solutions, and flexible media handling.



### SIMPLE USER INTERFACE

Each model within the imageFORCE line-up supports a consistent user interface, enabling operators to effortlessly run the device with a minimal learning curve.

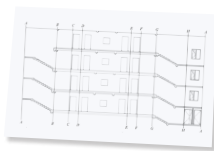
- Large 10.1" responsive and intuitive touchscreen.
- Familiar interface with icons categorized by color.
- Easy customization settings for language, accessibility, and display preferences.

### VERSATILE PRINT APPLICATIONS

Support for various paper sizes, finishes, and media types that adapt seamlessly to diverse office printing needs.



Booklets



CAD Drawings



Contracts/Invoices



Manuals



Legal Briefs



Calendars



### CLOUD READY SOLUTIONS

Canon's imageFORCE systems have the ability to integrate seamlessly with a range of powerful Canon and third-party software to help your workflow evolve. For example, you can easily print and scan to—and from—your favorite cloud storage services with the optional Cloud Connector.<sup>1</sup>



### GAIN CONTROL OF YOUR FLEET

Centralize the management of your print fleet and help maximize uptime with the support of imageWARE Enterprise Management Console. A standard feature on Canon devices, this console helps to monitor device status and consumables, apply security settings, update firmware, capture meter readings, and much more—virtually anytime and anywhere.



### HASSLE-FREE SETUP AND MAINTENANCE

Canon U.S.A.'s range of Smart Services are available as an option and are designed to help support you at every stage of the device management life cycle. Benefits include:

- Setting up and deploying your devices quickly.
- Enabling proactive service and fast issue resolution.
- Access upgrades and replace parts with ease.



### PRINTING THAT PERFORMS. SCANNING THAT DELIVERS.

Performance doesn't need to stop at print. Scan speeds of up to 270 images per minute. Scan full-color documents quickly and accurately at single-pass duplex scan speeds. Whether you're digitizing reports, ID cards, or mixed media files, you can capture clean, high-resolution scans that you can then integrate seamlessly into your digital workflows.

# STAY AHEAD

## FUTURE-READY. SECURITY-FOCUSED. LOW-IMPACT DESIGN.

Make the move forward with cutting-edge print technology that is built to help your organization be more productive and more prepared for the unexpected.

### SECURITY FEATURES DESIGNED TO HELP SAFEGUARD YOUR INFRASTRUCTURE

Implement security features designed with the modern workplace in mind. These include:

**Security Environment Estimation Feature:**

Recommends security settings based on the device's operating environment.



**Verify System at Startup<sup>2</sup>:** At device start-up, helps to verify that the boot process, firmware, and applications have not been altered or tampered with. Includes automatic recovery of boot process.

**FIPS 140-3 Storage Encryption:**

A U.S. government standard for cryptographic modules, supporting data encryption and security in hardware and software systems.



**SIEM Integration<sup>3</sup>:** The ability to integrate your print devices into your compatible security and event monitoring strategy.

**Trellix™ Embedded Control<sup>2</sup>:**

Utilizes whitelisting to help prevent execution of unrecognized malware or tampering of existing firmware/applications.



**Control Access:** Provides flexible authentication methods for PIN, username/password, or badge authentication accessibility, and display preferences.



### CANON'S FUTURE-READY UNIFIED FIRMWARE PLATFORM

With Canon's Unified Firmware Platform (UFP), a common source code for firmware development embedded within the imageFORCE products, your device can benefit from regular updates—which may include additional functionality to existing models—and the latest features.



### BUILT WITH SUSTAINABILITY FEATURES

From product design to power use, Canon's commitment to the environment can be seen with the imageFORCE series of printers. Features include:

**Low Energy Consumption:** A combination of highly efficient fusing technologies and low-melting-point toner helps to minimize power requirements and achieve low energy consumption.

**Cardboard Packaging:** Canon has reduced its use of plastic materials by switching from conventional foam packaging to interior cardboard packaging materials for the main unit—a material that is widely recyclable.

**Prestigious Certifications:** ENERGY STAR® certified and rated EPEAT Gold.



## Finisher Options



- Staple Finisher AG1**
- Staple Capacity up to 100 sheets
  - Output Capacity up to 5,000 sheets



- Staple Finisher AQ14**
- Staple Capacity up to 100 sheets
  - Output Capacity up to 4,250 sheets



- Staple Finisher AC15**
- Staple Capacity up to 65 sheets
  - Output Capacity up to 3,500 sheets
  - Supports Staple-free Stapling and Staple On Demand



- Booklet Finisher AG1**
- Staple Capacity up to 100 sheets
  - Output Capacity up to 5,000 sheets
  - Saddle Stitch Staple capacity up to 25 sheets



- Booklet Finisher AQ14**
- Staple Capacity up to 100 sheets
  - Output Capacity up to 4,250 sheets
  - Saddle Stitch Staple capacity up to 20 sheets



- Booklet Finisher AC25**
- Staple Capacity up to 65 sheets
  - Output Capacity up to 3,500 sheets
  - Saddle Stitch Staple capacity up to 20 sheets
  - Supports Staple-free Stapling and Staple On Demand



- Booklet Trimmer-G1**
- Requires Booklet Finisher-AG1
  - Booklet Capacity up to 10 booklets Acceptable Paper Weight up to 110 lb cover (300 gsm)

### Inner Booklet Trimmer-A1

- Requires Booklet Finisher-AQ1
- Acceptable Paper Weight up to 110 lb cover (300 gsm)

### Puncher Unit-BS1

- Requires Staple Finisher-AG1 or Booklet Finisher-AQ1
- Two or Three Holes

### Puncher Unit-BY1

- Requires either the Staple Finisher-AQ1 or Booklet Finisher-AQ1
- Two or Three Holes

### Copy Tray-R2

- Capacity up to 250 sheets (75 gsm)
- Paper Weight up to 110 lb cover (300 gsm)

## Accessories



- Document Insertion Unit-R1**
- Insert preprinted sheets
  - Up to 13" x 19-1/4"
  - Two trays
  - 400-sheet total capacity



- Paper Folding Unit-K2**
- Z-fold, C-fold, Half-fold, Accordion Z-fold, Double-parallel Fold



### Multi Function Professional Puncher-C1

- Supports various die sets
- Up to 140 lb. Index
- Supports 12" x 18", 11" x 17", Legal, Letter, Letter-R, and more
- 100,000-sheet punch tray capacity
- Enhanced die durability



## Paper Source Options



- Paper Deck Unit-E1**
- Paper Capacity up to 3,660 sheets
  - Paper Weight up to 140 lb index (256 gsm)
  - Paper Size: Letter



- POD Deck Lite-C1**
- Paper Capacity up to 3,660 sheets
  - Paper Weight up to 110 lb cover (300 gsm)
  - Paper Size: 13" x 19", 12" x 18", 11" x 17", Letter, Letter-R, Executive, Statement



### Multi-drawer Paper Deck-E1

- Paper Capacity up to 5,000 sheets
- Paper Weight up to 110 lb cover (300 gsm)
- Paper Size: 13" x 19", 12" x 18", 11" x 17", Legal, Letter, Letter-R, Executive, Statement

## PRINTER SPECIFICATIONS

# imageFORCE 8105/8195/8186

<b>Technology/Type</b>	Laser/A3 Monochrome Multifunction
<b>Core Functions</b>	Standard: Print, Copy, Scan, Send, Store Optional: Fax, Up to 2 lines
<b>Print/Copy Speed (BW)</b>	<b>imageFORCE 8105</b> Up to 105 ppm (Letter) Up to 81 ppm (Letter-R) Up to 63 ppm (Legal) Up to 52 ppm (11" x 17") <b>imageFORCE 8195</b> Up to 95 ppm (Letter) Up to 73 ppm (Letter-R) Up to 57 ppm (Legal) Up to 47 ppm (11" x 17") <b>imageFORCE 8186</b> Up to 86 ppm (Letter) Up to 66 ppm (Letter-R) Up to 52 ppm (Legal) Up to 43 ppm (11" x 17")
<b>Scan Speed (ipm, BW/Color, Letter)</b>	Single-Scanning: Up to 135/135 (300 x 300 dpi, send), Up to 80/80 (600 x 600 dpi, copy) Double-Sided Scanning: Up to 270/270 (300 x 300 dpi, send), Up to 160/90 (600 x 600 dpi, copy)
<b>Memory</b>	6.5 GB RAM
<b>Solid-State Drive</b>	Standard: 512 GB Optional: 1 TB
<b>Warm-Up Time</b>	Quick Startup Mode: Approx 4 Seconds <sup>6</sup> From Sleep Mode: Approx. 300 Seconds <sup>7</sup> (imageFORCE 8105/8195) Approx. 120 Seconds <sup>7</sup> (imageFORCE 8186) From Power On: Approx. 300 Seconds <sup>8</sup> (imageFORCE 8105/8195) Approx. 120 Seconds <sup>8</sup> (imageFORCE 8186)
<b>Paper Capacity (Letter, 20 lb. Bond)</b>	Standard: 4,360 Sheets Maximum: 9,360 Sheets <sup>9</sup>
<b>Supported Media Types</b>	Paper Cassette: Thin, Plain, Recycled, Color, Heavy, Bond, Transparency, Pre-punched, Letterhead, Tab <sup>10</sup> , Envelope <sup>11</sup> Paper Decks (Right/Left): Thin, Plain, Recycled, Color, Heavy, Bond, Pre-punched, Letterhead Multi-Purpose Tray: Thin, Plain, Recycled, Color, Heavy, Coated, Bond, Transparency, Label, Pre-punched, Letterhead, Tab, Envelope, Film, Textured, Tracing

<b>Supported Media Sizes</b>	Paper Cassette: Standard Size: 13" x 19", 12" x 18", 11" x 17", Legal, Letter, Letter-R, Executive, Statement Custom Size: 4" x 5-7/8" to 13" x 19-1/4" Envelopes <sup>11</sup> : COM10 No.10, Monarch, ISO-C5, DL Envelope Custom Size: 3-1/2" x 5-7/8" to 13" x 19-1/4" Paper Decks (Right/Left): Standard size: Letter Multi-Purpose Tray: Standard Size: 13" x 19", 12" x 18", 11" x 17", Legal, Letter, Letter-R, Executive, Statement Custom Size: 4" x 5-7/8" to 13" x 19-1/4" Free size: 4" x 5-7/8" to 13" x 19-1/4" Long Sheet <sup>9</sup> : 8-1/4" x 19-1/4" to 13" x 51-1/4" Envelopes: COM 10 No.10, Monarch, DL, ISO-C5 Envelope Custom Size: 3-1/2" x 5-7/8" to 13" x 19-1/4"
<b>Supported Media Weights</b>	Paper Cassette: 14 lb. bond to 110 lb. cover (52 to 300 GSM) Paper Decks (Right/Left): 14 lb. bond to 80 lb. cover (52 to 220 GSM) Multi-Purpose Tray: 14 lb. bond to 110 lb. cover (52 to 300 GSM) Duplexing: 14 lb. bond to 140 lb. index (52 to 300 GSM)
<b>Power Requirements</b>	110-127V, 60Hz, 16A
<b>Dimensions (W x D x H)</b>	38" x 34-1/4" x 46-5/8"
<b>Weight</b>	Approx. 589 lb. <sup>12</sup>
<b>Environmental Standards</b>	ENERGY STAR® certified EPEAT Gold

<sup>1</sup> Term license required.

<sup>2</sup> This feature is off by default and must be turned on by the user. Warm up times are affected once turned on.

<sup>3</sup> Third-party SIEM system required. Subject to third-party SIEM system terms and conditions. Canon cannot ensure compatibility with all third-party SIEM systems.

<sup>4</sup> Not available at launch.

<sup>5</sup> Only for 86 ppm.

<sup>6</sup> Time between power-on and appearance of the copy icon on the main menu.

<sup>7</sup> Time from exiting sleep mode to when printing is operational.

<sup>8</sup> Time from device power on, until copy ready (not print reservation).

<sup>9</sup> With Multi-drawer Paper Deck-E1.

<sup>10</sup> Tab Feeding Attachment-F1 (standard) is required.

<sup>11</sup> Envelope Feeder Attachment Kit (standard) is required.

<sup>12</sup> Including regular toner.

# WHAT WILL YOU CREATE WITH THE POWER OF NEXT?



# Canon

Trellix

CANON  
GENUINE  
TONER, CARTRIDGE  
& PARTS



[usa.canon.com/business](https://usa.canon.com/business)

As an ENERGY STAR® Partner, Canon U.S.A., Inc. has certified this model as meeting the ENERGY STAR energy efficiency criteria through an EPA recognized certification body. ENERGY STAR and the ENERGY STAR mark are registered U.S. marks. Canon, imageFORCE, imagePASS, and the GENUINE logo are registered trademarks or trademarks of Canon Inc. in the United States and may also be registered trademarks or trademarks in other countries. Canon products offer certain security features, yet many variables can impact the security of your devices and data. Canon does not warrant that use of its security features or recommendations will prevent security issues. Customers should perform their own due diligence and consult with their security expert to determine what security features to implement for their organization. Nothing herein should be construed as legal or regulatory advice concerning applicable laws; customers must have their own qualified counsel determine the feasibility of a solution as it relates to regulatory and statutory compliance. Some security features may impact functionality/performance; you may want to test these settings in your environment. Trellix and the Trellix logo are trademarks or registered trademarks of Musarubra US LLC or its subsidiaries in the U.S. and other countries. All other referenced product names and marks are trademarks of their respective owners. All printer output images are simulated. All features presented in this brochure may not apply to all Series and/or products and may be optional; please check with your Canon Authorized Representative for details. Products shown with optional accessories. Subscription to a third-party cloud service required. Subject to third-party cloud service providers terms and conditions. uniFLOW is a registered trademark of NT-ware Systemprogrammierung GmbH. Canon U.S.A. does not provide legal counsel or regulatory compliance consultancy, including without limitation, Sarbanes-Oxley, HIPAA, GLBA, Check 21, or the USA Patriot Act. Each customer must have its own qualified counsel determine the advisability of a particular solution as it relates to regulatory and statutory compliance. Specifications and availability subject to change without notice. Not responsible for typographical errors.