

**Canon**

# imagePRESS V Family

Color Production Digital Presses

**Brilliant Vision. Inside and Out.**



 High Productivity  
Across Your Run

 Superb Color  
Repeatability

 Tight Front-to-Back  
Registration Alignment

 Support for a Wide Range  
of Specialty Stocks



imagePRESS V900 shown with optional accessories.

## imagePRESS V900 Series

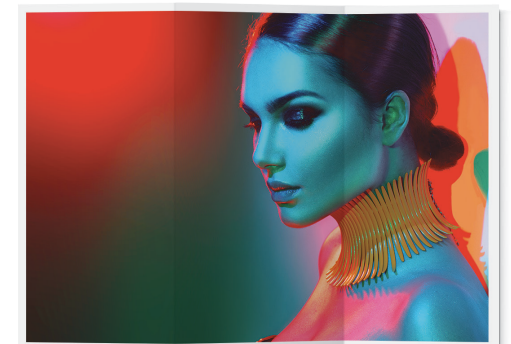
### Outsized performance in a compact footprint.

When it comes to delivering for your customers, you need a partner with vision.

Introducing the imagePRESS V900 Series. These light- to mid-volume production digital color presses are designed to offer impressive productivity, repeatable color, and incredible automation.

The imagePRESS V900 Series' advanced core technologies have been harnessed to allow you to realize your vision more easily and efficiently than ever. Canon has seamlessly blended form and function to help inexperienced operators produce brilliant output with superb color *fast!* Speeds of up to 90 ppm (Letter) and the default High-Productivity Mode can help you hit tight deadlines and get more work done throughout the day. The Inline Spectrophotometers (ILS) allow your operators to quickly produce repeatable, accurate color at just the push of a button. The Compact Registration Technology helps enable highly accurate front-to-back registration on important print jobs such as booklets, business cards, and direct mail pieces. And the imagePRESS V900 Series supports specialty media, which can help you offer high-margin jobs to your most critical customers.

Productivity. Quality. Versatility. The imagePRESS V900 Series is designed to meet your clients' demanding expectations and can help expand your portfolio to include creative and innovative applications.



# imagePRESS V1000

## Where performance meets possibility.

In the ever-changing production marketplace, you need a partner with vision.

Introducing the imagePRESS V1000 color production digital press. Canon has taken the proven quality, productivity, and versatility of the imagePRESS brand and elevated it. With new, distinctive, vital technologies, the imagePRESS V1000 is designed to allow you to realize your vision more easily and efficiently than ever before.

Canon has synergized form and function so that even the most inexperienced operator can impress with superb color and exquisite output! The innovative fusing system is designed to help environments realize high productivity in a small package while also helping to reduce turnaround time. And the streamlined paper conditioner helps keep work moving with fewer interruptions. The Dynamic Image-Transfer Technology helps create amazing output on a large range of stocks, and the Inline Spectrophotometers and Multi D.A.T. help deliver predictable and repeatable color. Plus, the Precision Registration Technology helps produce highly accurate duplexed printing, even on long and heavy medias.

Quality. Versatility. Productivity. The imagePRESS V1000 digital press gives you the tools you need to compete—and thrive—in the demanding print world.



imagePRESS V1000 shown with optional accessories.

# imagePRESS V1350

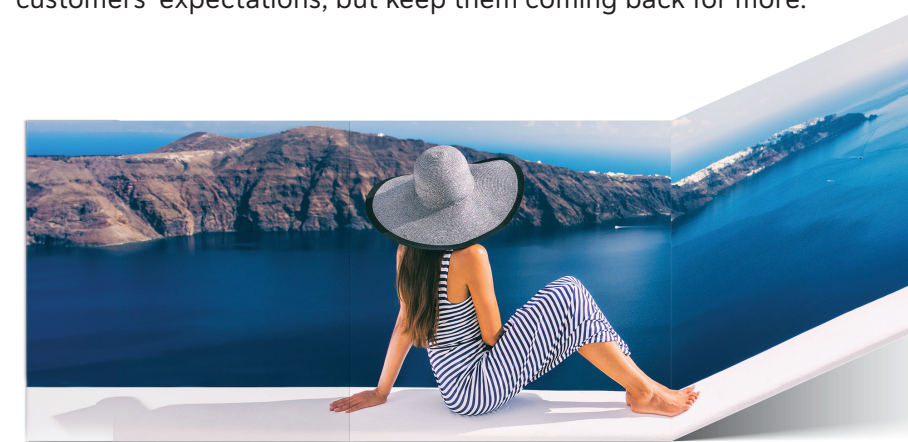
## Robust output and productivity with solid stability.


Consistently producing beautiful prints on time and within budget is no small task. That's why you need a partner with vision.

Say hello to the imagePRESS V1350 digital press. This high-volume, color production digital press offers a seamless combination of powerful print productivity and labor-saving automation technology, and it's been designed to help produce beautiful, accurate prints fast, easy, and efficiently.


Canon technology can work to quickly and efficiently produce offset-quality output and incredible repeatability. This flagship imagePRESS printing solution is designed to deliver astonishing print speeds of up to 135 ipm. The Active Registration Technology keeps paper aligned and moving through the press fluidly, minimizing downtime. Inline Spectrophotometers (ILS) can help operators to quickly produce repeatable, accurate color at the push of a button. The flat and stable paper path combined with the steel frame helps contribute to a press that's durable and reliable day in and day out. Plus, all this comes with expanded support for printing on a wide variety of medias up to 170 lb. Cover.

At the core of the imagePRESS V1350 are powerful technologies that can help your operation run efficiently. This workhorse is designed to deliver outstanding results that will not only exceed your customers' expectations, but keep them coming back for more.



 Lightning-Fast Print  
Speed up to 135 ppm

 Extensive Support  
for Rigid Stocks

 Automated Self-Adjusting  
Color and Registration

 Dependable and  
Stable Operation



imagePRESS V1350 shown with optional accessories.

# Specifications

		imagePRESS V900/V800/V700	imagePRESS V1000	imagePRESS V1350
<b>Print Speed</b> (Simplex/Duplex)	<b>Letter</b>	Up to 90/81/71 ipm	Up to 101 ipm	Up to 135 ipm
	<b>11" x 17"</b>	Up to 45/40/35 ipm	Up to 52 ipm	Up to 76 ipm
	<b>12" x 18"</b>	Up to 42/40/35 ipm	Up to 50 ipm	Up to 72 ipm
	<b>13" x 19"</b>	Up to 40/38/33 ipm	Up to 48 ipm	Up to 69 ipm
	<b>13" x 30"</b>	Up to 23/22/19 ipm	Up to 28 ipm	Up to 28 ipm
<b>Scan Speed<sup>1</sup></b> (Letter, 300 dpi)		Up to 270 ipm	Up to 270 ipm	N/A
<b>Print Resolution</b>	<b>Maximum</b>	2400 x 2400 dpi	2400 x 2400 dpi	2400 x 2400 dpi
<b>Paper Capacity<sup>2</sup></b>	<b>Standard</b>	Up to 1,650 Sheets	Up to 1,100 Sheets	Up to 1,000 Sheets
	<b>Maximum</b>	Up to 10,400 Sheets	Up to 11,100 Sheets	Up to 10,000 Sheets
<b>Paper Size</b>	<b>Standard</b>	3.9" x 5.8" to 13" x 19.2"	3.9" x 5.8" to 13" x 19.2"	7.2" x 7.2" to 13" x 19.2"
	<b>Optional</b>	5.5" x 7.2" to 13" x 51.2"	5.5" x 7.2" to 13" x 51.2"	7.2" x 7.2" to 13" x 30"
<b>Paper Weight</b>	<b>Standard</b>	14 lb. Bond to 110 lb. Cover	14 lb. Bond to 110 lb. Cover	16 lb. Bond to 170 lb. Cover
	<b>Optional</b>	14 lb. Bond to 130 lb. Cover	14 lb. Bond to 150 lb. Cover	16 lb. Bond to 170 lb. Cover
<b>Automatic Duplexing</b>	<b>Standard</b>	3.9" x 5.8" to 13" x 19.2"	3.9" x 5.8" to 13" x 19.2"	7.2" x 7.2" to 13" x 19.2"
	<b>Optional</b>	5.5" x 7.2" to 13" x 30"	5.5" x 7.2" to 13" x 51.2"	7.2" x 7.2" to 13" x 30"
<b>Envelopes</b>		#10 Business, Monarch, 6" x 9", 9" x 12", 10" x 13", DL, ISO-C5	#10 Business, Monarch, 6" x 9", 9" x 12", 10" x 13", DL, ISO-C5	9" x 12", 10" x 13"
<b>Print Servers</b>		PRISMAsync Print Server PRISMAsync Print Server LP imagePRESS Server N500 imagePRESS Server P400 imagePRESS Printer Board	PRISMAsync Print Server imagePRESS Server D3000	PRISMAsync Print Server imagePRESS Server E9000

<sup>1</sup> Optional accessories required.

<sup>2</sup> Capacity based on 20 lb. Bond.

To view detailed specifications, please consult the Customer Expectations Document.

Canon, imagePRESS, and the GENUINE logo are registered trademarks of Canon Inc. in the United States and may also be registered trademarks or trademarks in other countries. All other referenced product names and marks are trademarks of their respective owners. All screen and printer output images are simulated. Specifications and availability subject to change without notice. Not responsible for typographical errors.  
©2023 Canon U.S.A., Inc. All rights reserved.  
08/23-1039-8477

**Canon**

usa.canon.com

