

## imageRUNNER ADVANCE DX C5800 Series

Color  
Mid-volume  
Multifunction

Print up to 70 ppm (BW/color)

Scan up to 270 ipm (300 dpi) (BW/color, duplex)

Print up to 12" × 18"

6,350-sheet maximum paper capacity

Canon's comprehensive portfolio of imageRUNNER ADVANCE DX multifunction printers and integrated solutions can help **simplify** the end user experience and management of technology, better **control** sensitive information and print-related costs, and help ensure that technology investments proactively **evolve** with changing needs.



### WORKFLOW EFFICIENCY

- 10.1" intuitive touchscreen with smartphone-like usability.
- A unique, customized experience tailored to individual preferences using My ADVANCE.
- Supports mobile solutions and integration with many popular cloud services like Google Drive.<sup>1</sup>
- Scan and convert documents to searchable digital files in a variety of file formats.
- Integration with Canon and various third-party software with embedded application platform.
- Hot Folders allow users to drag and drop a file into a hot folder and automatically print with pre-defined settings such as number of copies and finishing requirements.
- Easily scan to, and print from, cloud services or email directly from the device User Interface.\*



### SECURITY

- Advanced standard security feature set to help safeguard sensitive information and assist in regulatory compliance.
- Integrates with existing, third-party SIEM\*\*2 systems to help provide real-time, comprehensive insights into potential threats to the network and printers.
- Technology to verify that the device boot process, firmware, and applications initialize without alteration at startup. Trellix™ Embedded Control<sup>3</sup> utilizes a whitelist to protect against malware and tampering of firmware and applications.
- Security policy settings can be controlled with a dedicated password, configured from a central location, and exported to other supported devices.
- Control access to the device and specific features, using a host of flexible authentication methods—PIN code, user name/password, or card access.<sup>4</sup>



### QUALITY AND RELIABILITY

- Canon's signature reliability and engine technologies help keep productivity high and minimize the impact on support resources.
- Outstanding imaging technologies and toner allow for consistently striking images, thanks to Canon's V<sup>2</sup> color profile.
- Designed to achieve maximum uptime with status notifications that help keep supplies replenished and intuitive maintenance videos for consumables replacement.
- imageRUNNER ADVANCE models have received many awards and recognition from leading industry analysts, often referencing strong reliability.

\* Optional Cloud Connector term license required.  
\*\* Security Information and Event Management.



## DEVICE AND FLEET MANAGEMENT

- Designed for quick, easy deployment.
- Remote diagnostics and parts life management for proactive maintenance and rapid fixes.
- Easy and intuitive to monitor device status and consumable levels, turn off devices remotely, observe meter readings, manage settings, and implement security policies.
- Common firmware and regular updates with Unified Firmware Platform (UFP) for continuous improvements and consistency across a fleet.



## COST MANAGEMENT

Implement the optional uniFLOW Online cloud-based solution<sup>5</sup> for full accounting and reporting for compatible Canon and third-party devices. Features include the following:

- Track and assess print, copy, and scan usage and allocate costs to departments or projects.
- Apply print policies and restrict usage by user to help reduce unnecessary printing and contribute to cost efficiency.
- A centralized dashboard with up-to-the-minute insights into printer activity.



## SUSTAINABILITY

- A combination of fusing technologies and low-melting-point toner minimizes power requirements and helps achieve low energy consumption.
- Encourage environmentally conscious work practices by enabling multiple settings that can help save paper and energy.
- ENERGY STAR® Certified, Rated EPEAT® Gold and EPEAT Climate+.<sup>6</sup>

## CONFIGURATION OPTIONS

## imageRUNNER ADVANCE DX C5800 Series



### STAPLE FINISHER-AB3\*

- 2-tray, 3,250-sheet capacity
- Corner and double stapling up to 50 sheets
- Supports Staple-Free Stapling (up to 10 pages, 17 lb. Bond) and Staple on Demand
- Supports optional internal 2/3-hole puncher (2/3 Hole Puncher Unit-A1)



### BOOKLET FINISHER-A2 WITH TRI-FOLD\*

- 2-tray, 3,250-sheet capacity
- Corner and double stapling up to 50 sheets
- Booklet-making up to 20 sheets and saddle-folding up to 3 sheets
- Supports Staple-Free Stapling (up to 10 pages, 17 lb. Bond) and Staple on Demand
- Supports optional internal 2/3-hole puncher (2/3 Hole Puncher Unit-A1)
- Built in C-Fold up to 5 sheets



### INNER FINISHER-L1\*\*

- 2-tray, 550-sheet capacity
- Corner and double stapling up to 50 sheets within the footprint of the main unit
- Supports Staple-Free Stapling (up to 10 pages, 17 lb. Bond) and Staple on Demand
- Supports optional internal 2/3-hole puncher (Inner 2/3 Hole Puncher-D1)\*\*



### INNER 2-WAY TRAY-M1



### BUFFER PASS UNIT-P2



### PAPER FOLDING UNIT-L1\*\*

- Offers Z-Fold



### HIGH CAPACITY CASSETTE FEEDING UNIT-C1

- 2,450-sheet capacity
- Supports up to Letter
- 14 lb. Bond to 140 lb. Index

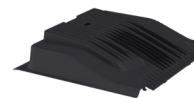


### CASSETTE FEEDING UNIT-AQ1

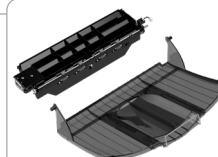
- Two 550-sheet cassettes
- Supports up to 12" x 18"
- 14 lb. Bond to 140 lb. Index



### CABINET TYPE-V



### INNER TRAY\*



### COPY TRAY KIT



### PAPER DECK UNIT-F2

- 2,700-sheet capacity
- 14 lb. Bond to 140 lb. Index
- Supports Letter



### imagePASS-R1

- Delivers fast processing speed, outstanding image quality, and time-saving workflow
- Personalized printing with the built-in, entry-level Fiery FreeForm™ or with the supported variable data printing (VDP) formats

\* Requires Buffer Pass Unit-P2.

\*\* Inner Finisher L1 and Inner 2/3 Hole Puncher D1 not available on the imageRUNNER ADVANCE DX C5870i.

• Required when Staple Finisher-AB3/Booklet Finisher-A2 with Tri-Fold or Inner Finisher-L1 is not installed.

• Requires Buffer Pass Unit-P2 and either Booklet Finisher-A2 with Tri-Fold or Staple Finisher-AB3.

## Main Unit

### Type

Color Laser Multifunctional

### Core Functions

Standard: Print, Copy, Scan, Send, Store  
Optional: Fax

### Control Panel

10.1" TFT LCD WSVGA Color Flat-panel

### Memory

6.0 GB RAM

### Solid State Drive

Standard: 256 GB  
Optional: 1 TB

### Interface Connection

Network: 1000Base-T/100Base-TX/10Base-T,  
Wireless LAN (IEEE 802.11 b/g/n)  
Optional: Bluetooth Low Energy

### Others

Standard: USB 2.0 (Host) x1, USB 3.0 (Host) x1,  
USB 2.0 (Device) x1  
Optional: Copy Control Interface

### Paper Output Capacity (LTR, 20 lb. Bond)

Standard: 250 Sheets  
Maximum: 3,450 Sheets  
(with Staple Finisher-AB3 or Booklet Finisher-A2  
with Tri-Fold and 3rd Copy Tray Kit-A1)

### Paper Sources (LTR, 20 lb. Bond)

Standard: Dual 550-sheet Paper Cassettes,  
100-sheet Stack Bypass  
Optional: Dual 550-Sheet Paper Cassettes  
(Cassette Feeding Unit-AQ1), 2,450-Sheet  
High Capacity Paper Cassette (High  
Capacity Cassette Feeding Unit-C1),  
2,700-Sheet Paper Deck  
(Paper Deck Unit-F2)

### Paper Capacity (LTR, 20 lb. Bond)

Standard: 1,200 Sheets  
Maximum: 6,350 Sheets

### Finishing Capabilities

Standard: Collate, Group  
With Options: Collate, Group, Offset, Staple, Saddle-  
Stitch, Hole Punch, Staple Free Stapling,  
Staple On Demand<sup>7</sup>

### Supported Media Types

Multi-Purpose Thin, Plain, Recycled, Color, Heavy, Coated,  
Tracing, Bond, Transparency, Label,  
Pre-punched, Letterhead, Tab, Envelope  
Paper Thin, Plain, Recycled, Color, Heavy, Bond,  
Cassettes: Transparency, Pre-punched, Letterhead,  
Envelope<sup>8</sup>

### Supported Media Sizes

Upper Letter, Executive, Statement-R, Envelope  
Cassette: [No.10 (COM10), Monarch, DL, ISO-C5],  
Custom Size (3-7/8" x 5-7/8" to 11-3/4"  
x 8-1/2")  
Lower 12" x 18", 11" x 17", Legal, Letter, Letter-R,  
Cassette: Executive, Statement-R, Envelope  
[No.10 (COM10), Monarch, DL, ISO-C5],  
Custom Size (3-7/8" x 5-7/8" to 12" x 18")  
Multi-Purpose 12" x 18", 11" x 17", Legal, Letter, Letter-R,  
Tray: Executive, Statement, Statement-R,  
Envelope [No.10 (COM10), Monarch, DL,  
ISO-C5], Envelope Custom Size (3-7/8" x  
3-1/2" to 12-5/8" x 18"), Custom Size/  
Free Size (3-7/8" x 5-1/2" to 12-5/8" x 18")

### Supported Media Weights

Cassettes: 14 lb. Bond to 140 lb. Index (52 to 256 g/m<sup>2</sup>)  
Stack Bypass: 14 lb. Bond to 110 lb. Cover (52 to 300 g/m<sup>2</sup>)  
Duplexing: 14 lb. Bond to 140 lb. Index (52 to 256 g/m<sup>2</sup>)

### Print/Copy Speed (BW and Color)

C5870i: Up to 70 ppm (Letter); Up to 42 ppm  
(Letter-R); Up to 40 ppm (Legal);  
Up to 35 ppm (11" x 17")  
C5860i: Up to 60 ppm (Letter); Up to 36 ppm  
(Letter-R); Up to 34 ppm (Legal);  
Up to 32 ppm (11" x 17")  
C5850i: Up to 50 ppm (Letter); Up to 30 ppm  
(Letter-R); Up to 29 ppm (Legal);  
Up to 27 ppm (11" x 17")  
C5840i: Up to 40 ppm (Letter); Up to 24 ppm  
(Letter-R); Up to 23 ppm (Legal);  
Up to 21 ppm (11" x 17")

### Warm-up Time

From Power Approx. 6 Seconds<sup>9</sup>

On:

From Sleep Mode<sup>10</sup>

C5870i: Approx. 7 Seconds

C5860i/ Approx. 6 Seconds

C5850i/  
C5840i:

Quick Approx. 4 Seconds<sup>11</sup>

Startup

Mode:

### Dimensions (W x D x H)

24-3/8" x 28-1/2" x 36-7/8" (620 x 722 x 937 mm)<sup>12</sup>

### Installation Space (W x D)

Basic: 44-7/8" x 45-3/4" (1,138 x 1,162 mm)  
(Right Cover Open with Multi-purpose  
tray extended + Cassette Drawers Open)  
Fully 73-1/2" x 45-3/4" (1,866 x 1,162 mm)  
Configured: (Staple Finisher-AB1 or Booklet Finisher-AB1  
with the extension tray extended + Paper  
Deck Unit-F2 + Cassette Drawers open)

### Weight<sup>13</sup>

C5870i: Approx. 238.1 lb. (108 kg)

C5860i/ Approx. 231.5 lb. (105 kg)

C5850i:

C5840i: Approx. 229.3 lb. (104 kg)

## Print Specifications

### Print Resolution (dpi)

1200 x 1200

### Standard Page Description Languages

UFR II, PCL6, Adobe PS 3

### Supported File Types

PDF, TIFF, JPEG, EPS,<sup>14</sup> XPS

### Printing from Mobile Devices and Cloud-based Services

A range of standard and optional software and MEAP-  
based solutions (including Cloud Connector, AirPrint,  
Mopria, Universal Print by Microsoft®, Canon PRINT, and  
uniFLOW Online)<sup>5</sup> are available to provide printing from  
mobile devices or internet-connected devices and cloud-  
based services depending on your requirements. Please  
contact your sales representative for further information.

### Fonts

PCL: 93 Roman, 10 Bitmap fonts, 2 OCR fonts,  
Andalé Mono WT J/K/S/T (Japanese,  
Korean, Simplified and Traditional  
Chinese),<sup>15</sup> Barcode Fonts<sup>16</sup>  
PS: 136 Roman

### Operating System<sup>17</sup>

UFR II/PS: Windows® 7/8.1/10/Server 2008/Server  
2008 R2/Server 2012/Server 2012 R2/  
Server 2016/Server 2019, Mac OS X  
(10.11 or later)  
PCL: Windows® 7/8.1/10/Server 2008/Server  
2008 R2/Server 2012/Server 2012 R2/  
Server 2016/Server 2019  
PPD: Windows® 7/8.1/10, Mac OS X (10.10 or later)

## Copy Specifications

### First-Copy-Out Time

C5870i: As fast as 2.7 seconds (BW)/  
3.7 seconds (Color)  
C5860i: As fast as 2.9 seconds (BW)/  
4.2 seconds (Color)  
C5850i: As fast as 3.3 seconds (BW)/  
4.9 seconds (Color)  
C5840i: As fast as 4.1 seconds (BW)/  
6.1 seconds (Color)

### Copy Resolution (dpi)

600 x 600

### Multiple Copies

Up to 999

### Magnification

25%-400% (1% Increments)

### Preset Reductions/Enlargements

25%, 50%, 64%, 73%, 78%, 100% (1:1), 121%, 129%,  
200%, 400%

## Scan Specifications

### Type

Single-Pass Duplexing Automatic Document Feeder

### Document Feeder Paper Capacity

Up to 200 Sheets (20 lb. Bond)

### Document Feeder Supported Media Sizes

11" x 17", Legal, Letter, Letter-R, Statement, Statement-R,  
Custom Size: 2-3/4" x 5-1/2" to 12" x 17"

### Document Feeder Supported Media Weights

Single-Sided 13.3 lb. Bond to 80 lb. Cover (50 to 220  
Scanning: gsm) (BW, CL)  
Double-Sided 13.3 lb. Bond to 80 lb. Cover (50 to 220  
Scanning: gsm) (BW, CL)

### Platen Acceptable Originals

Sheet, Book, 3-Dimensional Objects

### Pull Scan

Color Network ScanGear2 for both Twain and WIA  
Supported Windows® 7/8.1/10/Server 2008/  
OS: Server 2008 R2/Server 2012/  
Server 2012 R2/Server 2016

### Scan Resolution (dpi)

Scan for Copy: 600 x 600

Scan for Send: (Push) 600 x 600 (SMB/FTP/WebDAV/  
IFAX), (Pull) 600 x 600

Scan for Fax: 600 x 600

### Scan to Mobile Devices and Cloud-based Services

A range of solutions is available to provide scanning to  
compatible mobile devices and certain cloud-based  
services depending on your requirements.

### Scan Speed (LTR) (BW/CL)

Single-sided 135/135 (300 dpi), 80/80 (600 dpi)

Scanning:

Double-sided 270/270 (300 dpi), 160/90 (600 dpi)

Scanning:

## Send Specifications

### Destination

Standard: Email/Internet FAX (SMTP), SMB3.0, FTP,  
WebDAV, Mail Box

Optional: Super G3 FAX, IP Fax

### Address Book

LDAP (2,000)/Local (1,600)/Speed Dial (200)

### Send Resolution (dpi)

Push: Up to 600 x 600

Pull: Up to 600 x 600

### Communication Protocol

File: FTP (TCP/IP), SMB3.0 (TCP/IP), WebDAV  
Email: SMTP, POP3

### File Format

Standard: TIFF, JPEG, PDF (Encrypted, Compact,  
Searchable, Apply Policy, Optimize for  
Web, User Signature, PDF A/1-b, Limited  
Color, Device Signature, User Signature),  
XPS (Compact, Searchable, Device  
Signature, User Signature), Office Open  
XML (PowerPoint, Word)

## Fax Specifications (Optional)

### Modem Speed

Super G3: 33.6 Kbps  
G3: 14.4 Kbps

### Compression Method

MH, MR, MMR, JBIG

### Resolution (dpi)

400 x 400, 200 x 400, 200 x 200, 200 x 100

### Sending/Recording Size

Statement-R to 11" x 17"

### Fax Memory

Up to 30,000 Pages (2,000 jobs)

### Speed Dials

Max. 200

### Group Dials/Destinations

Max. 199 Dials

### Sequential Broadcast

Max. 256 Addresses

### Memory Backup

Yes

## Store Specifications

### Mail Box (Number Supported)

100 User Inboxes, 1 Memory RX Inbox, 50 Confidential Fax Inboxes, Maximum 10,000 Pages (2,000 jobs) Stored

### Advanced Box

Communication Protocol: SMB or WebDAV

Supported

Client PC: Windows (Windows 8.1/10)

Concurrent Connections (Max.)

SMB: 64

WebDAV: 3

### Advanced Box Available Disc Space

Approx. 16 GB (Standard HDD)

Approx. 480 GB (With Optional 1 TB HDD)

## Security Specifications

### Authentication and Access Control

User Authentication (Picture Login, Picture and PIN Login, Card Login, Username and Password Login, Function Level Login, Mobile Login), Department ID Authentication (Department ID and PIN Login, Function Level Login), uniFLOW and uniFLOW Online<sup>5</sup>

### Document Security

Print Security (Secure Print, Encrypted Secure Print, Forced Hold Printing, uniFLOW Secure Print<sup>6</sup>), Receive Data Security (Confidential Fax Inbox Forwarding Received Documents Automatically), Scan Security (Encrypted PDF, Device Signature PDF/XPS, User Signature PDF/XPS, Adobe LiveCycle<sup>®</sup> Rights Management ES2.5 Integration), BOX Security (Mail Box Password Protected, Advanced Box Access Control), Send Data Security (Setting for requesting password input per transmission, Restricted Email/File send functions, Confirming FAX number, Allow/Restrict Fax Driver Transmissions, Allow/Restrict Sending from History, S/MIME Support), Document Tracking (Secure Watermark)

### Network Security

TLS 1.3, IPSec, IEEE802.1X authentication, SNMP V3.0, Firewall Functionality (IP/MAC Address Filtering), Dual Network Support (Wired LAN/Wireless LAN, Wired LAN/Wired LAN), Disabling Unused Functions (Enabling/Disabling Protocols/Applications, Enabling/Disabling Remote UI, Enabling/Disabling USB Interface), G3 FAX separation from LAN, USB Port separation from LAN, Prohibit the execution of files stored in Advanced Box in the MFP, Scan and Send Virus Concerns for Email Reception

### Device Security

Protecting SSD Data [SSD Data Encryption (FIPS140-3 Validated), SSD Lock], Standard SSD Initialize, Trusted Platform Module (TPM), Job Log Conceal Function, Protecting MFD Software Integrity, Checking MFD Software Integrity (Verify System at Startup, Runtime Intrusion Detection with Trellix Embedded Control)

### Device Management and Auditing

Administrator Password, Digital Certificate and Key Management, Audit Log, Cooperating with External Security Audit System (Security Information and Event Management), Image Data Logging, Security Policy Setting

## Environmental Specifications

### Operating Environment

Temperature: 50 to 86 °F

Humidity: 20 to 80% RH (Relative Humidity)

### Power Requirements

C5870i/ 110-127 V, 60 Hz, 12 A

C5860i/ 110-127 V, 60 Hz, 12 A

C5850i/ 110-127 V, 60 Hz, 10 A

C5840i/ 110-127 V, 60 Hz, 10 A

### Power Consumption

Maximum: Approx. 1,800 W

Standby: Approx. 56.1 W<sup>18</sup>

Sleep Mode: Approx. 0.8 W<sup>19</sup>

Typical Electricity Consumption (TEC) Rating<sup>20</sup>

C5870i: 0.86 kWh

C5860i: 0.71 kWh

C5850i: 0.57 kWh

C5840i: 0.47 kWh

### Standards

ENERGY STAR Certified

Rated EPEAT<sup>®</sup> Gold and EPEAT Climate+.<sup>6</sup>

## Consumables

### Toner<sup>21</sup>

GPR-61 Toner BK/C/M/Y

GPR-61L Toner C/M/Y

### Toner Yield (Estimated @ 5% Coverage)

GPR-61 Toner

BK: 71,000 Pages

GPR-61 Toner

C/M/Y: 60,000 Pages

GPR-61L Toner

C/M/Y: 26,000 Pages

<sup>1</sup> Subscription to a third-party cloud service required. Subject to third-party cloud service provider's Terms and Conditions.

<sup>2</sup> Third-party SIEM system required. Subject to third-party SIEM system's Terms and Conditions. Canon cannot ensure compatibility with all third-party SIEM systems.

<sup>3</sup> This feature is off by default and must be turned on by the user. Warm-up times are affected once turned on.

<sup>4</sup> Requires additional option.

<sup>5</sup> Requires uniFLOW Online or uniFLOW. uniFLOW is available for education and government customers with prior approval.

<sup>6</sup> For current EPEAT rating (Gold/Silver/Bronze), please visit [www.epeat.net](http://www.epeat.net).

<sup>7</sup> Finishing capabilities vary depending on the options connected.

<sup>8</sup> Envelope Feeder Attachment (standard) is required.

<sup>9</sup> Time from device power-on until copy ready (not print reservation).

<sup>10</sup> Time from exiting Sleep mode to when printing is operational.

<sup>11</sup> Time from device power-on to when the copy icon appears and is enabled to operate on the touch panel display.

<sup>12</sup> Includes main unit and standard ADF.

<sup>13</sup> Includes main unit, consumables, and Cassette Feeding Unit-AQ1.

<sup>14</sup> EPS can be printed directly only from the Remote User Interface.

<sup>15</sup> Requires the optional PCL International Font Set-A1.

<sup>16</sup> Requires the optional Barcode Printer Kit-D1.

<sup>17</sup> Other operating systems and environments, including AS/400, UNIX, Linux, and Citrix may be supported. Some of these solutions are chargeable. SAP Device Types are available via the SAP Market Place. For more information, contact your sales representative.

<sup>18</sup> Reference Value (measured one unit).

<sup>19</sup> 0.8 W Sleep mode not available in all circumstances due to certain settings.

<sup>20</sup> Based on ENERGY STAR Product Specification for Imaging Equipment Version 3.0.

<sup>21</sup> GPR-61L Toner also available for Color (C, M, Y). Yield (estimated @ 5% coverage) is 26,000 images.

To learn about Canon's many awards, visit [usa.canon.com/awards](http://usa.canon.com/awards).



[usa.canon.com/business](http://usa.canon.com/business)

As an ENERGY STAR<sup>®</sup> Partner, Canon U.S.A., Inc. has certified these models as meeting the ENERGY STAR energy efficiency criteria through an EPA recognized certification body. ENERGY STAR and the ENERGY STAR mark are registered U.S. marks. Canon, imageRUNNER, imagePASS, and the GENUINE logo are registered trademarks or trademarks of Canon Inc. in the United States and may also be registered trademarks or trademarks in other countries. Canon products offer certain security features, yet many variables can impact the security of your devices and data. Canon does not warrant that use of its features will prevent security issues. Nothing herein should be construed as legal or regulatory advice concerning applicable laws; customers must have their own qualified counsel determine the feasibility of a solution as it relates to regulatory and statutory compliance. Trellix and the Trellix logo are trademarks or registered trademarks of Musarubra US LLC or its subsidiaries in the U.S. and other countries. All other referenced product names and marks are trademarks of their respective owners. All features presented in this brochure may not apply to all Series and/or products and may be optional; please check with your Canon Authorized Dealer for details. Product shown with optional accessories. Canon U.S.A. does not provide legal counsel or regulatory compliance consultancy, including without limitation, Sarbanes-Oxley, HIPAA, GLBA, Check 21 or the USA Patriot Act. Each customer must have its own qualified counsel determine the advisability of a particular solution as it relates to regulatory and statutory compliance. Specifications and availability subject to change without notice. Not responsible for typographical errors.

Federal Law prohibits copying of certain documents. Violators may be subject to penalties. We suggest that you check with your own legal counsel. Canon U.S.A., Inc. and Canon Canada, Inc. intend to cooperate with Law Enforcement Agencies in connection with claims of unauthorized copying.

