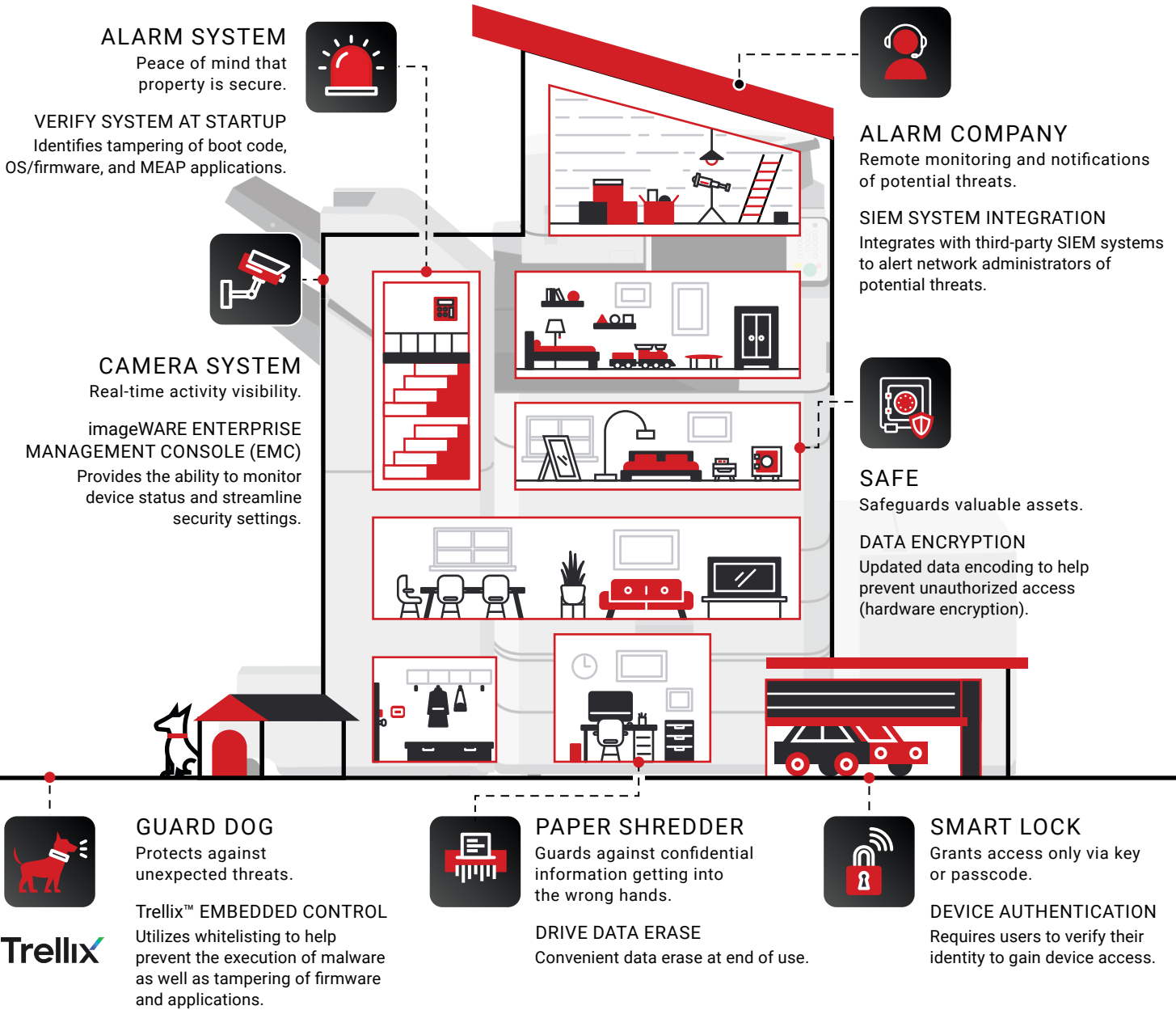




HOW TO PROTECT YOUR BUSINESS DATA LIKE YOU PROTECT YOUR HOME

We protect our homes with security features to control access and safeguard valuables—and your multifunction printers should help you do the same. The imageRUNNER ADVANCE, imageRUNNER ADVANCE DX, and imagePRESS Lite product families incorporate an extensive set of security features to help you keep your data safe.



[USA.CANON.COM/IRADVSECURITY](https://usa.canon.com/iradvsecurity)

Canon, imageRUNNER ADVANCE, imageRUNNER ADVANCE DX, and imagePRESS Lite are registered trademarks of Canon Inc. in the United States and may also be registered trademarks or trademarks in other countries. imageWARE is a registered trademark of Canon U.S.A., Inc. in the United States and a trademark of Canon Inc. in certain other countries. Trellix and the Trellix logo are trademarks or registered trademarks of Musaruba US LLC or its subsidiaries in the U.S. and other countries. All other referenced product names and marks are trademarks of their respective owners. Canon products offer certain security features, yet many variables can impact the security of your device and data. Some security features may impact functionality/performance; you may want to test these settings in your environment. Third-party SIEM system required. Subject to third-party SIEM system terms and conditions. Canon cannot ensure compatibility with all third-party SIEM systems. Canon does not warrant that use of its security features will prevent malicious attacks, or prevent misuse of devices or data or other security issues. The Verify System at Start Up function is set to [Off] by default. It can be turned on by an administrator in Settings/Registration. When this function is set to ON, device startup will increase by 20-40 seconds (depending on the model). Recovery from Sleep Mode is not affected. This feature is off by default and must be turned on by the user. Warm-up times are affected once turned on. Nothing herein should be construed as legal or regulatory advice concerning applicable laws; customers must have their own qualified counsel determine the feasibility of a solution as it relates to regular and statutory compliance. Not responsible for typographical errors.
©2023 Canon U.S.A., Inc. All rights reserved.