



imageWARE
Enterprise Management Console
Version 4

Centralized, Cross-Enterprise Network Device Management



*Your Total Device
Management Solution
for Streamlined,
Automated Control.*



imageRUNNER ADVANCE DX C5860i (shown with optional cassettes) and C568iF.

NETWORK DEVICE MANAGEMENT MADE EASY

Canon imageWARE Enterprise Management Console (iW EMC) is a highly scalable, web-based utility capable of installing and managing multiple Canon and third-party networked devices on customer networks. It offers advanced automated task management features, including retrieving/distributing device settings, rebooting devices, retrieving/distributing address books, discovering new devices, and sending email alerts regarding device errors. iW EMC provides a foundation for future innovation due to its distinctive framework, and it's designed for easy implementation and simplified expandability.

CENTRALIZED DEVICE MANAGEMENT

iW EMC detects and stores information about networked printers, such as location of the device. It can be set up to discover devices across multiple subnets at regular intervals through automated tasks, using the SNMP protocol and Multicast device discovery.

DEVICE SETTINGS DELIVERY/RETRIEVAL

Allows for the retrieval and delivery of device settings such as device location, system manager, and DNS Server. It also provides the ability to reboot a single device or group of devices.

VIEW DEVICE STATUS

An IT administrator can view device status from a single portal. Email alerts can also be set up for various device errors.

SCALABLE

Multiple iW EMC servers can be installed in different geographical locations to reduce network bandwidth requirements. An IT administrator can access any iW EMC server on the network using the Computer Discovery and Management Module.

CUSTOMIZABLE USER ACCESS PRIVILEGES

iW EMC offers detailed user access administration. An IT administrator can manage access to each iW EMC module by individual user accounts. Active Directory is also supported for user authentication.

NOTIFYING USERS

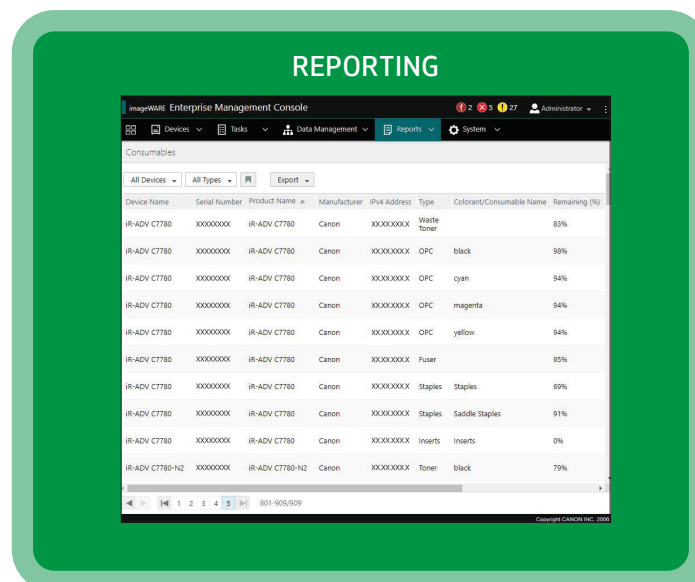
Send notices to other IT administrators about device status. Exchange messages with individuals or every connected user to inform them of changes to the printing environment or device configuration.

CUSTOMIZABLE PORTAL

An IT administrator can customize the main portal to suit each user's needs.

DETAILED SYSTEM LOGS

Comprehensive system logs for each transaction are stored. Logs can also be exported for archival purposes.



SIMPLIFY YOUR DAY WITH AUTOMATED TASK MANAGEMENT

It's virtually impossible for any corporate IT staff to physically modify the address books of every individual device across the enterprise each time an employee joins, transfers, or leaves the company. imageWARE Enterprise Management Console can help by automatically executing IT administrator-created instructions and tasks, either immediately or at timed intervals, including overnight or on weekends.

Some ways imageWARE Enterprise Management Console can improve your productivity include:

- **Discovery of new devices.** Through SNMP, you can query all Canon and third-party networked devices and automatically add new ones to the database for initial setup and configuration.
- **Delivery of device settings.** Retrieve device settings such as IP addresses, locations, and System Manager contact information, then reset them to default conditions to minimize help desk calls or reboot a fleet of devices.
- **Device monitoring.** Devices can be monitored continuously, and common functions such as meter retrieval can be easily accomplished.

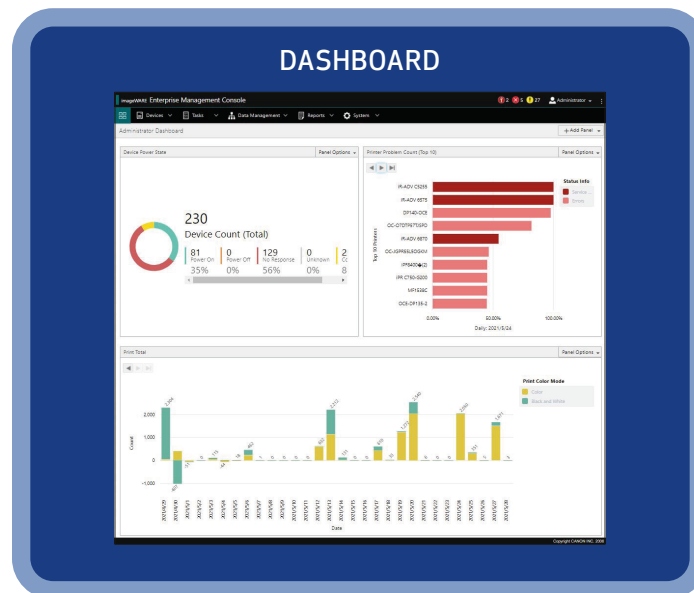
BUILT-IN SECURITY

Security is a critical part of your enterprise—and an important part of iW EMC. It features Secure Socket Layer (SSL) security* and also offers functionality that helps prevent individual users from viewing device groups. In addition, the software also supports native Active Directory integration.

EXPAND YOUR CONTROL

Reduce your total cost of ownership even as you increase device control. The unique architecture of iW EMC provides a foundation for future expansion through device management features that maximize printing assets across your entire enterprise. These features include:

- Device Firmware Update
- Device Configuration Management
- Device Application Management
- Address Book Management
- Credential Management
- Setting Profile Management
- Meter Capture
- Device Settings Configurator (separate software)

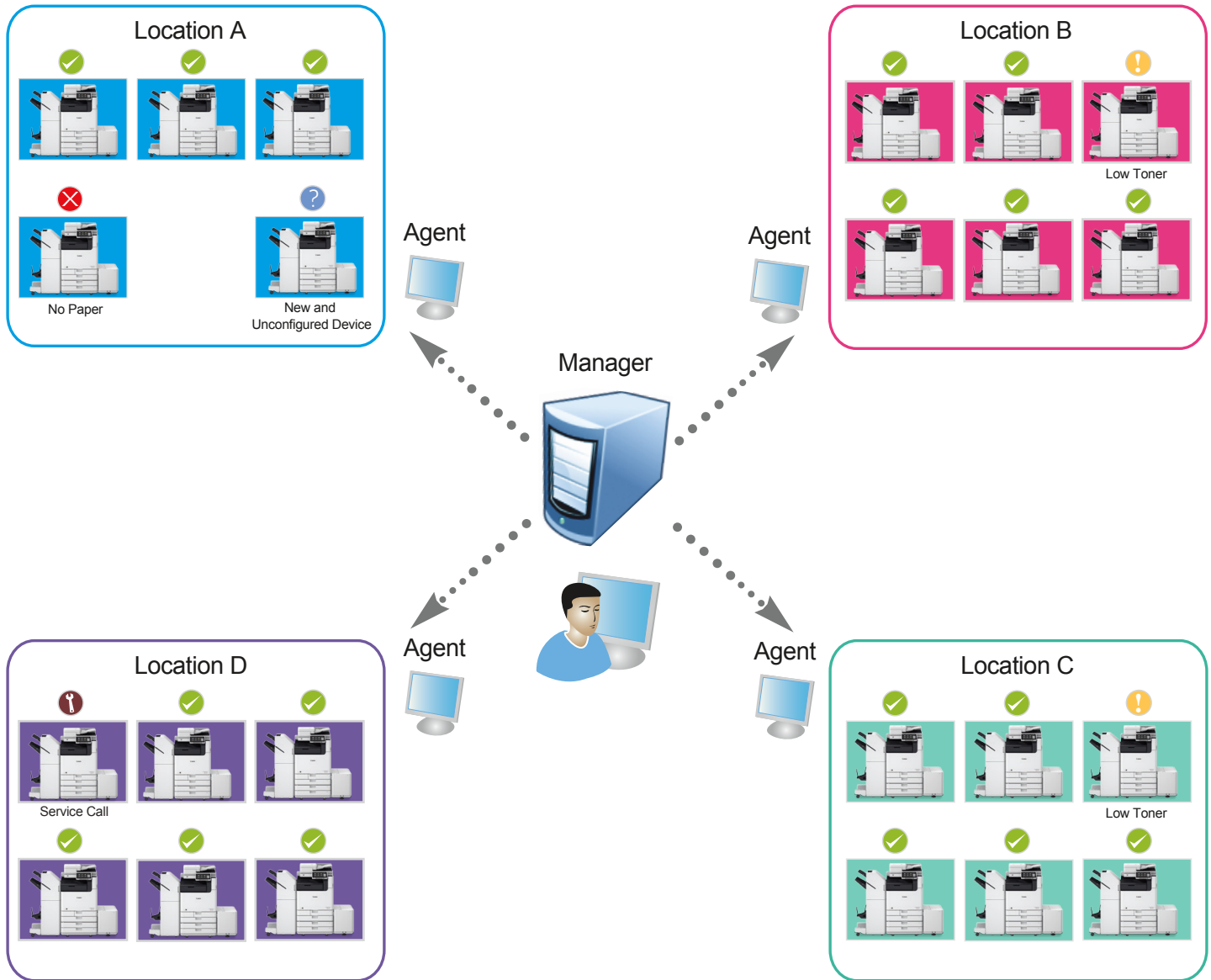


* Canon products offer certain security features, yet many variables can impact the security of your devices and data. Canon does not warrant that use of its features will prevent security issues. Nothing herein should be construed as legal or regulatory advice concerning applicable laws; customers must have their own qualified counsel determine the feasibility of a solution as it relates to regulatory and statutory compliance.

MAXIMIZE UPTIME ACROSS YOUR ENTERPRISE

It's easy to gain control of a large fleet with imageWARE Enterprise Management Console.

LARGE-SCALE CONFIGURATION



BENEFITS

- Centralized Fleet Management
- Device Discovery
- Device Configuration
- Device Monitoring
- Scalable

STREAMLINE TO MEET YOUR NEEDS

To reduce traffic, multiple servers can be installed on your network in different locations. Simply place device management portals where they're needed most. This will allow you to have the following advantages:

- **Identify device configurations.** IT administrators can identify finishing and feature configurations on the MFP or printer (e.g., all devices that support the "Booklet" function) and enter special data such as Asset Tag, Contact Number, and Lease End Date.
- **Group devices logically.** Simplify device location by logically grouping them (e.g., "N.Y. Office," "Building 2").
- **Manage third-party devices.** Consolidate management of all network devices that comply with the standard printer MIB, regardless of brand or manufacturer.
- **View device status in real time.** For fast resolution of errors such as paper jams or out-of-toner/ink conditions, connected devices immediately report status changes via email to a system administrator or specific end user.
- **Customize viewing preferences.** Sort devices by protocol, type, or group (e.g., "all black-and-white printers") to segment and manage them as your environment demands.

TASK

Name	Task Category	Status	Task ID	Log ID	Target Type	Ended
Get the printer list	Discover Printers	Success	1cd85d46-1742-4024-8a83-380e6bbaa93	c7842563-0476-4081-ba7a-acc63f643874	Agent	2021/4/5 10:40:26
backup	Back Up Device Setting Values	Success	3ef6e493-4f48-425b-b2ab-7071547a6300	551330ac-8af5-4567-ac54-2b6f6364329a	Device	2021/4/9 9:22:27
Push ULM	Install/Update Applications	Success	94237f4a-4a4b-4a7a-9742-08c63758b330	6645f6b5-dc28-452b-8f11-868813d33553	Device	2021/4/9 10:04:33
Push Application	Install/Update Applications	Success	c8f1f6b7-4b23-483c-93a4-81bc4251169b	514a5081-f920-4d46-a065-6c0599170236	Device	2021/4/14 15:16:49
Start Apps	Start Applications	Success	162d8f0a-7d3b-4604-86c6-55969a2b7093	a91e0703-14d1-4836-a232-75a2f6c38e42	Device	2021/4/18 15:20:29
Batch	Batch Task	Success	56217447-686c-4500-880b-419c51e40469	0559b014-70c7-4844-a273-c39c6370702a	Device	2021/4/14 15:42:08
push	Update Firmware	Success	c9054a4d-ac2b-4904-8c4d-4f1005080702	790339c0-c9b7-404a-9c5b-3160328a7a7a	Device	2021/4/20 16:20:13
Test	Distribute Device Setting Values	Success	89052540-598f-4a4f-ad10-779ead73694b	94001e10-0271-47cd-b349-0c0b7c1ea714	Device	2021/4/21 13:48:01
Reboot	Restart/Shutdown Printer	Success	1a46070c-d485-4206-8f03-82507a6824	6939731-908-499a-8ce1-2eaf7e086631	Device	2021/4/21 13:54:39
Discover	Discover Printers	Success	0950c099-4aa4-4754-815c-7210d465b916	706220c7-403e-4833-8209-4ac16d4ea320	Agent	2021/4/27 11:17:53

DASHBOARD

Print Count (Top 10)

Device Power State

990 Total Device Count

632 ID 64%
272 Power On 28%
84 Offline 8.49%

Status Count

990 Total Device Count

0 Offline 0%
336 Error 34%
645 Normal 65%

Device Information

MENU OPTIONS

- Device
 - Devices
 - Device Group
 - Switch EMI Setting
 - Settings
 - Log
- Task
 - Tasks
 - Button Tasks
 - Log
- Manage
 - Address Books
 - Device Applications
 - Security Policies
 - Device Configurations Data
 - Firmware management
- Report
 - Application Summary
 - Counter
 - Status Summary
 - Firmware Summary
- Admin
 - Users
 - Agents
 - Plugins
 - Settings

imageWARE ENTERPRISE MANAGEMENT CONSOLE VERSION 4

This latest version offers many advantages for centralized, cross-enterprise network device management.

EASY AND FAST INSTALLATION

- The installation process is simplified. Preparation of software other than iW EMC install-set is not required, except for large-scale environments (which require a Database).
- The previous plug-ins are now built-in to v4 helping to reduce installation time.

DESIGNED FOR SMALL TO LARGE ENVIRONMENTS

- The Agent plays an intermediary role in communication between the Manager and the devices. It helps to make network security management easier and clearer. Additionally, it helps to maintain the system across environments of all sizes, from small to large. (Appropriate number of Agents must be in place.)
- With a well-engineered system plan and the appropriate Agents in place, iW EMC can handle a global-wide network environment, including time zone differences.

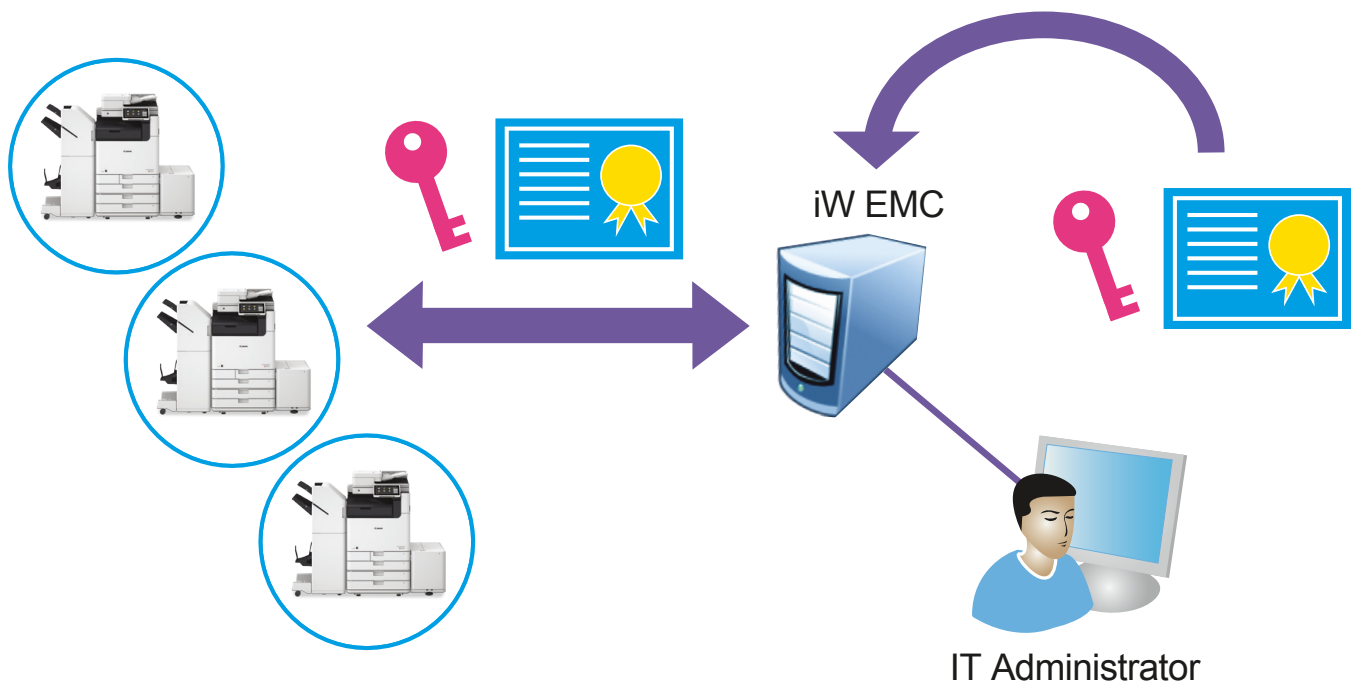
IMPROVED USABILITY AND PERFORMANCE

- An improved, intuitive UI and enhanced dashboard help reduce time and ease operation.
- Improved performance means reduced stress and greater overall efficiency.

ENHANCED FUNCTIONALITY

- Capability of Keys and Certificates Management
- Monitoring and notifying device setting values
- Enhanced device monitoring security*
- Increased supported device counters (Service mode counters can be configured.)

KEYS AND CERTIFICATE MANAGEMENT



*Canon products offer certain security features, yet many variables can impact the security of your devices and data. Canon does not warrant that use of its features will prevent security issues. Nothing herein should be construed as legal or regulatory advice concerning applicable laws; customers must have their own qualified counsel determine the feasibility of a solution as it relates to regulatory and statutory compliance.

SYSTEM REQUIREMENTS

OPERATING SYSTEMS	DATABASE SOFTWARE	WEB BROWSERS	SOFTWARE RUN-TIME ENVIRONMENT
<ul style="list-style-type: none"> Microsoft® Windows® Server 2016 (latest service pack) Edition: Standard Microsoft Windows Server 2019 (latest service pack) Edition: Standard Microsoft Windows 10 (latest version or one version older than feature-update) Edition: Pro/Enterprise Platform: 64-bit 	<ul style="list-style-type: none"> SQLite Microsoft SQL Server 2017 Edition: Express/Web/Standard/Enterprise Platform: 64-bit Microsoft SQL Server 2019 Edition: Express/Web/Standard/Enterprise Platform: 64-bit 	<ul style="list-style-type: none"> Microsoft Edge Microsoft Internet Explorer (IE) (The Dashboard cannot be displayed in IE.*) Google Chrome Mozilla Firefox <p>* Latest versions of browsers</p>	<ul style="list-style-type: none"> .NET Framework (version 4.6.2 or later)

SYSTEM CONFIGURATION

There's no limit to the number of devices you can connect to imageWARE Enterprise Management Console; the Manager and Agent configuration will change based on the actual count.

When devices managed are **LESS THAN 5,000**, install the Manager and the Agent to the same computer.

NO. OF MANAGED DEVICES		UP TO 100	UP TO 1,000	UP TO 3,000	UP TO 5,000
Computers required to install the Manager and Agent	Processor	Core i7	Core i7	Core i7	Core i7
	No. of Logical Cores	4	4	6	6
	Memory (GB)	16	16	24	24
	Hard Disk Space (GB)	400	450	450	450

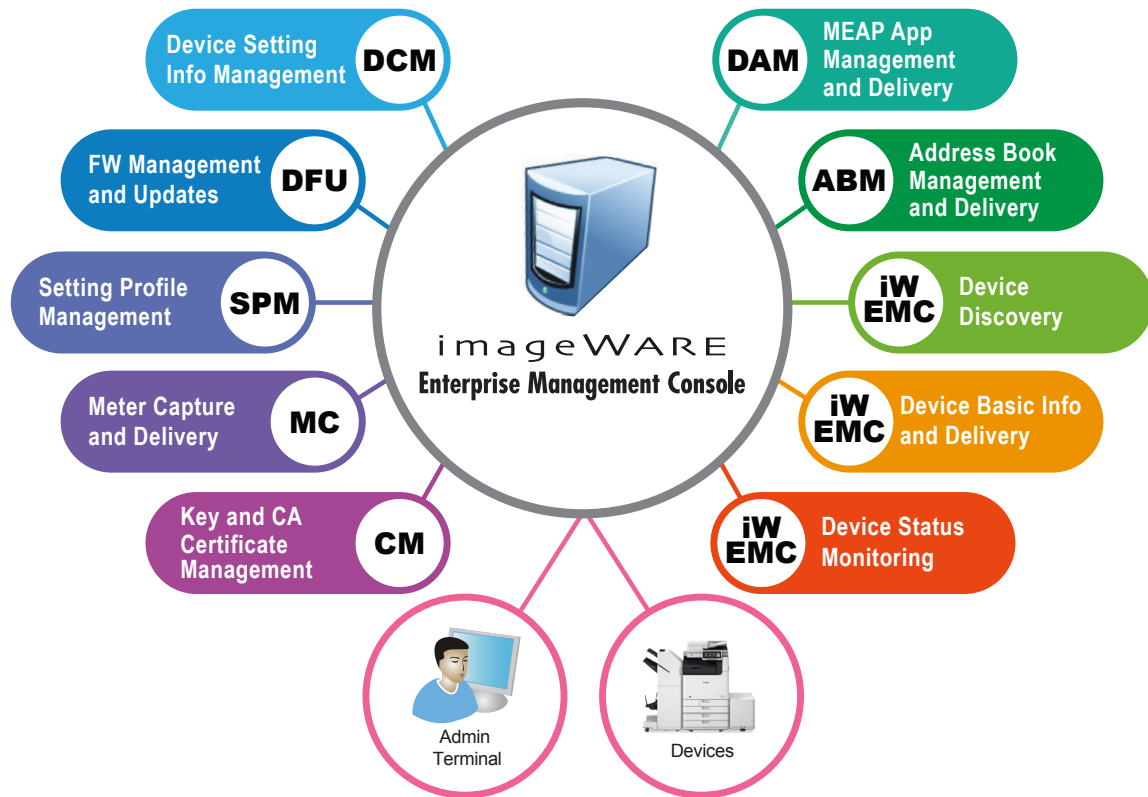
When devices managed **EXCEED 5,000**, allocate multiple Agents so that the number of devices managed by a single Agent is 5,000 or less. One Manager can manage up to 10 Agents. One Agent can also be installed to the same computer as the Manager.

NO. OF MANAGED DEVICES		UP TO 10,000	UP TO 30,000	UP TO 50,000
Computers required to install the Manager and Agent	Processor	Core i7	Core i7	Core i7
	No. of Logical Cores	4	4	6
	Memory (GB)	16	16	24
	Hard Disk Space (GB)	400	450	450
Computers required to install the Manager Only	Processor	Xeon	Xeon	Xeon
	No. of Logical Cores	8	16	20
	Memory (GB)	16	32	32
	Hard Disk Space (GB)	400	600	800
Computers required to install the Agents Only	Processor	Core i7	Core i7	Core i7
	No. of Logical Cores	4	4	4
	Memory (GB)	8	8	8
	Hard Disk Space (GB)	100	100	100
Number of Agents		2	6	10

THE POWER TO MANAGE INFORMATION

With Canon imageWARE Enterprise Management Console, you can streamline device control, speed problem resolution, automate tasks, and reduce IT burdens. You can even expand the solution and optimize administration efficiency throughout your entire enterprise. imageWARE Enterprise Management Console—your total network device management solution.

imageWARE Enterprise Management Console v4 Built-in Features



USA.CANON.COM/SOFTWARE

Canon



Canon and imageRUNNER are registered trademarks of Canon Inc. in the United States and may also be registered trademarks or trademarks in other countries. imageWARE is a registered trademark of Canon U.S.A., Inc. in the United States and is a trademark of Canon Inc. in certain other countries. All other referenced product names and marks are trademarks of their respective owners. Some items may not be available at this time; please check for availability. Specifications and availability subject to change without notice. Not responsible for typographical errors. ©2021 Canon U.S.A., Inc. All rights reserved.