


**efi** *Campus and Library  
Self-Serve Copy and Print*

A decorative horizontal brushstroke with a gradient from yellow to red, positioned below the title.A young woman with long dark hair in a ponytail, wearing a blue hoodie, is smiling and looking at a computer monitor. Her hand is resting on her chin, and another hand is visible near the keyboard.

Student print  
needs have  
changed.  
How do you  
stay current?

# Perfect for today's campus and library.

Students today are more digital and more mobile and keep more documents in the cloud. Antiquated devices such as coin-operated copiers are not meeting their printing needs and create cash management headaches for university staff. Isn't it time for a better solution?

EFI™ Self-Serve and Payment System simplifies the access and payment processes and provide the flexibility to print from mobile devices and popular cloud storage accounts.



10" touch screen provides tablet-like experience for today's students with clear instructions and intuitive touch gestures.

## Do you need self-serve copy and print with access to the cloud?

The EFI Self-Serve M600 Print and Copy Station provides the easiest way for users to access, print, and pay in a completely self-serve environment, whether accessing files from their USB drives, mobile devices, or cloud accounts. The M600 station boasts a large 10" color touch screen, allows secure credit card payment supporting EMV® with latest chip authorization and PCI Point-to-Point Encryption (P2PE)™, as well as cash card payment, and integrates with campus card and billing systems.

The M600 station:

- Prints from USB drives and mobile devices
- Prints from cloud accounts such as Dropbox™, Google Drive™, Microsoft OneDrive®, Box, and PrintMe®
- Is compatible with a variety of Multi-Function Printers (MFP)



## How are you handling printing from mobile devices?

Tablets, smartphones, and laptops are the new tools for students. Now students can print from anywhere to any M600 connected printer with EFI's PrintMe. Students simply email or upload their files to PrintMe cloud, receive a release code back, and retrieve their documents by entering or scanning the release code at any M600 station. The PrintMe service:

- Is included at no cost with the M600 station
- Works with any mobile device with email (print@printme.com)
- Has a driver for PC and Mac
- Has a mobile app for iOS and Android devices to upload files and receive release codes

## Need to accept cash for copy and print?

The optional EFI G5 Card Vending Kiosk provides students with convenient self-serve access to purchase and reload cash cards, check balances, and print receipts. The Card Vending Kiosk:

- Includes 19" capacitive touch screen
- Offers high-speed thermal receipt printing
- Holds up to 200 cards
- Provides multi-directional bill acceptor for up to 600 bills
- Offers optional coin acceptor



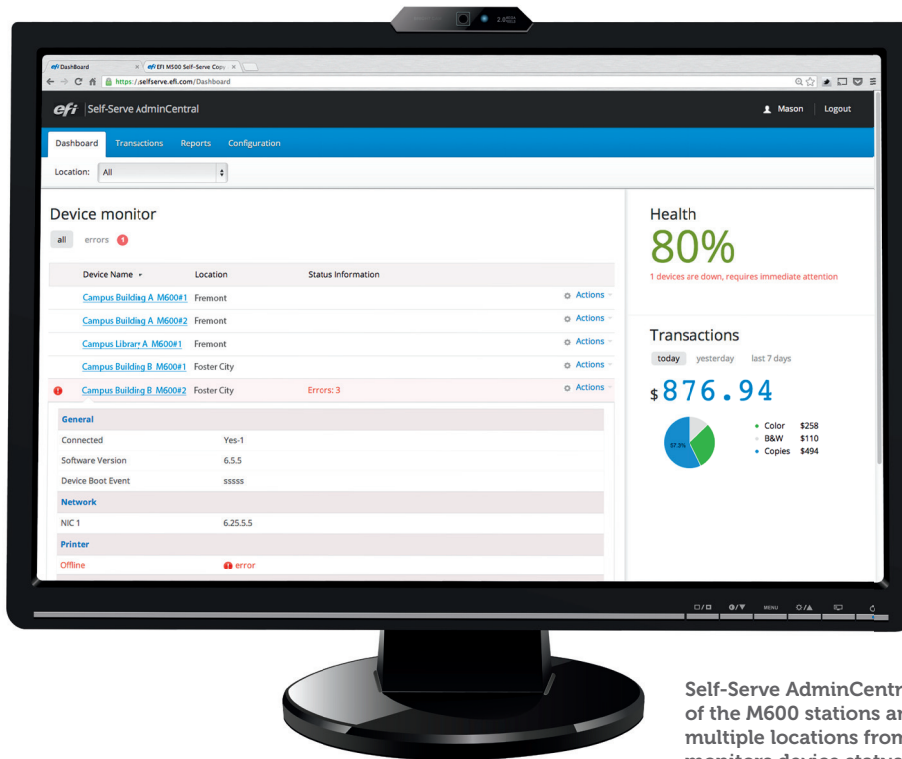
G5 Card Vending Kiosk



## What application ties it all together?

EFI Self-Serve AdminCentral, the cloud-based service, allows administrators to manage the M600 stations and the optional G5 card vending kiosk from anywhere — using just a Web browser. The management application does the following:

- Allows addition and configuration of devices and services, including cloud storage and file transfer services in multiple sites
- Sets or adjusts prices and tax rates for multiple connected devices
- Generates detailed device usage reports and exports to CSV or XML file
- Monitors device status in real time and provides diagnostics through dashboards
- Notifies of software updates and pushes to multiple connected devices
- Provides integration with campus ID card payment systems



Self-Serve AdminCentral manages all of the M600 stations and G5 kiosks in multiple locations from a browser and monitors device status in real time.

## EFI fuels success.

We develop breakthrough technologies for the manufacturing of signage, packaging, textiles, ceramic tiles, and personalized documents, with a wide range of printers, inks, digital front ends, and a comprehensive business and production workflow suite that transforms and streamlines the entire production process, increasing your competitiveness and boosting productivity. Visit [www.efi.com](http://www.efi.com) or call 650-357-3500 for more information.



Nothing herein should be construed as a warranty in addition to the express warranty statement provided with EFI products and services.

The APPS logo, AutoCal, Auto-Count, Balance, BESTColor, BioVu, BioWare, ColorPASS, Colorproof, ColorWise, Command WorkStation, CopyNet, Cretachrom, Cretaprint, the Cretaprint logo, Cretaprinter, Cretaroller, Digital StoreFront, DocBuilder, DocBuilder Pro, DockNet, DocStream, DSPdesign Studio, Dynamic Wedge, EDOX, EFI, the EFI logo, Electronics For Imaging, Entrac, EPCount, EPPPhoto, EPRegister, EPStatus, Estimate, ExpressPay, FabriVU, Fast-4, Fiery, the Fiery logo, Fiery Driven, the Fiery Driven logo, Fiery JobFlow, Fiery JobMaster, Fiery Link, Fiery Navigator, Fiery Prints, the Fiery Prints logo, Fiery Spark, FreeForm, Hagen, InkIntensity, Inkware, LapNet, Logic, Metrix, MicroPress, MiniNet, Monarch, OneFlow, Pace, Pegasus, Pegasus Vision, PhotoXposure, PressVu, Printcafe, PrinterSite, PrintFlow, PrintMe, the PrintMe logo, PrintSmith, PrintSmith Site, PrintStream, Print to Win, Prograph, PSI, PSI Flexo, Radius, Remoteproof, RIPChips, RIP-While-Print, Screenproof, SendMe, Sincolor, Splash, Spot-On, TrackNet, UltraPress, UltraTex, UltraVu, UV Series 50, VisualCal, VUTEk, the VUTEk logo, and WebTools are trademarks of Electronics For Imaging, Inc. and/or its wholly owned subsidiaries in the U.S. and/or certain other countries.

All other terms and product names may be trademarks or registered trademarks of their respective owners, and are hereby acknowledged.