



The easiest way to access, pay, and print

The Efi™ M600 Station lets you copy or print from USB drives, mobile devices, or cloud accounts, and pay in a completely self-serve environment.

Cloud and mobile printing

In addition to copying, the M600 station enables printing in a number of ways:

- Print from USB — simply insert a USB-A or USB-C drive and select files to print.
- Print from mobile devices — email files to print@printme.com to receive a barcode enabled release code. Scan or enter that release code when ready to print.
- Print from cloud accounts — access popular cloud services such as Dropbox™, Box, Google Drive™, Microsoft OneDrive®, and PrintMe®.



Easy, secure experience

The M600 station makes it easy to preview files before printing with intuitive touch gestures such as zooming, scrolling, just like your smartphone or tablet. It allows secure credit card payment supporting EMV® with latest chip authorization and PCI Point-to-Point Encryption (P2PE)™, as well as cash card payment and integration with campus card and billing systems.

A flexible platform for growth

The M600 station works with a variety of MFPs. Its flexibility to add new features and services allows you to adapt to rapidly changing trends and preferences that transform the way customers work and interact with digital content and printed materials making it an incredible platform for growth and greatly expands the life of the hardware investment.

EFI M600 Station

Security

- Hardened image
- Encrypted communications
- Locked access to cable connections
- Firewall to prevent unauthorized communication

Superior features

- 10" color touchscreen
- Customer facing USB Type A and Type C port
- Integrated 1D/2D barcode scanner

Payment types supported

- Visa, MasterCard, American Express, Discover (varies by country and payment gateway service provider)

- Payment gateway support: FreedomPay with P2PE support
- Cash cards: Stored Value card, Givex
- Campus cards: CBORD CS Gold®, CBORD Odyssey PCST™, Blackboard Transact™, Heartland
- Contactless card payment (coming in 2018)

Other features

- Supports most PostScript® enabled MFP models
- Email and printed receipts
- Centralized system monitoring, configuration, and reporting
- Your brand/logo displayed on-screen
- Automatic software updates
- Configurable homescreen and screensaver

Regulatory agency approvals

- PCI Security: PA-DSS compliant
- Safety: UL/CSA, TUV, and CB-Scheme
- Emissions: FCC, CE, and C-Tick (Class A approved)
- Environmental: RoHS and WEEE

Power

- Input: 100-240V, 1.3A, 50-60Hz

Language

- English, French

Currency support

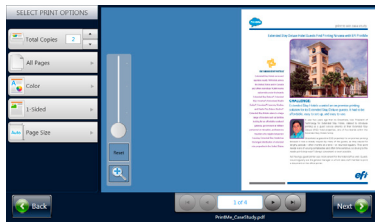
- USD, CAD, GBP

Dimensions/Weight

- Height: Approx 44" (112 cm) mounted on stand
- Width: 13.4" (34 cm)
- Depth: 9.5" (24 cm)
- Weight: 29.6 lbs (13.4 kg) with stand and card reader

Requirements

- The M600 station is driven by the cloud-based Self-Serve AdminCentral



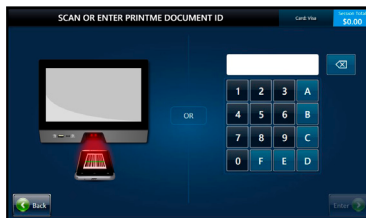
The M600 station provides many options with intuitive instructions and interactive WYSIWYG preview.



The back of the M600 station provides easy network connectivity behind a locked enclosure. The M600 station employs comprehensive measures to ensure physical and data security.



Costs and total charges are clearly shown.



The M600 station provides convenient ways for mobile printing, such as scanning PrintMe document ID to retrieve files from the cloud.



EFI fuels success.

We develop breakthrough technologies for the manufacturing of signage, packaging, textiles, ceramic tiles, and personalized documents, with a wide range of printers, inks, digital front ends, and a comprehensive business and production workflow suite that transforms and streamlines the entire production process, increasing your competitiveness and boosting productivity. Visit www.efi.com or call 650-357-3500 for more information.



Nothing herein should be construed as a warranty in addition to the express warranty statement provided with EFI products and services.

The APPS logo, AutoCal, Auto-Count, Balance, BESTColor, BioVu, BioWare, ColorPASS, Colorproof, ColorWise, Command WorkStation, CopyNet, Cretachrom, Cretaprint, the Cretaprint logo, Cretaprinter, Cretaroller, Digital StoreFront, DocBuilder, DocBuilder Pro, DockNet, DocStream, DSPdesign Studio, Dynamic Wedge, EDOX, EFI, the EFI logo, Electronics For Imaging, Entrac, EPCount, EPPhoto, EPRegister, EPStatus, Estimate, ExpressPay, FabriVU, Fast-4, Fiery, the Fiery logo, Fiery Driven, the Fiery Driven logo, Fiery JobFlow, Fiery JobMaster, Fiery Link, Fiery Navigator, Fiery Prints, the Fiery Prints logo, Fiery Spark, FreeForm, Hagen, Inkintensity, Inkware, LapNet, Logic, Metrix, MicroPress, MiniNet, Monarch, OneFlow, Pace, Pecas, Pecas Vision, PhotoXposure, PressVu, Printcafe, PrinterSite, PrintFlow, PrintMe, the PrintMe logo, PrintSmith, PrintSmith Site, PrintStream, Print to Win, Prograph, PSI, PSI Flexo, Radius, Remoteproof, RIPChips, RIP-While-Print, Screenproof, SendMe, Sincolor, Splash, Spot-On, TrackNet, UltraPress, UltraTex, UltraVu, UV Series 50, VisualCal, VUTEk, the VUTEk logo, and WebTools are trademarks of Electronics For Imaging, Inc. and/or its wholly owned subsidiaries in the U.S. and/or certain other countries.

All other terms and product names may be trademarks or registered trademarks of their respective owners, and are hereby acknowledged.