

# A smart way to manage self-serve copy and print

EFI™ Self-Serve AdminCentral, a cloud-based Web application, lets you easily manage your EFI Self-Serve devices and EFI PrintMe® service anywhere, anytime.



## **Easy to use and manage from anywhere**

EFI Self-Serve AdminCentral lets you configure and manage your EFI Self-Serve devices such as the EFI M600 station and G5 Card Vending Kiosk, as well as EFI PrintMe Web service from anywhere — with just a Web browser. It's quick and easy to set up the devices and services in one or more locations, based on printing capabilities and customer needs. As needs change, you can easily adjust SKUs, pricing, and tax rates.

## **Low entry and maintenance costs**

A flexible cloud-based subscription model makes it easy and affordable to offer new services. AdminCentral eliminates the cost and headaches

associated with in-house servers, and one-click updates make it easy to apply upgrades to all of your self-serve stations, ensuring you always have the latest in security and features.

## **Real-time status checks and reports anytime**

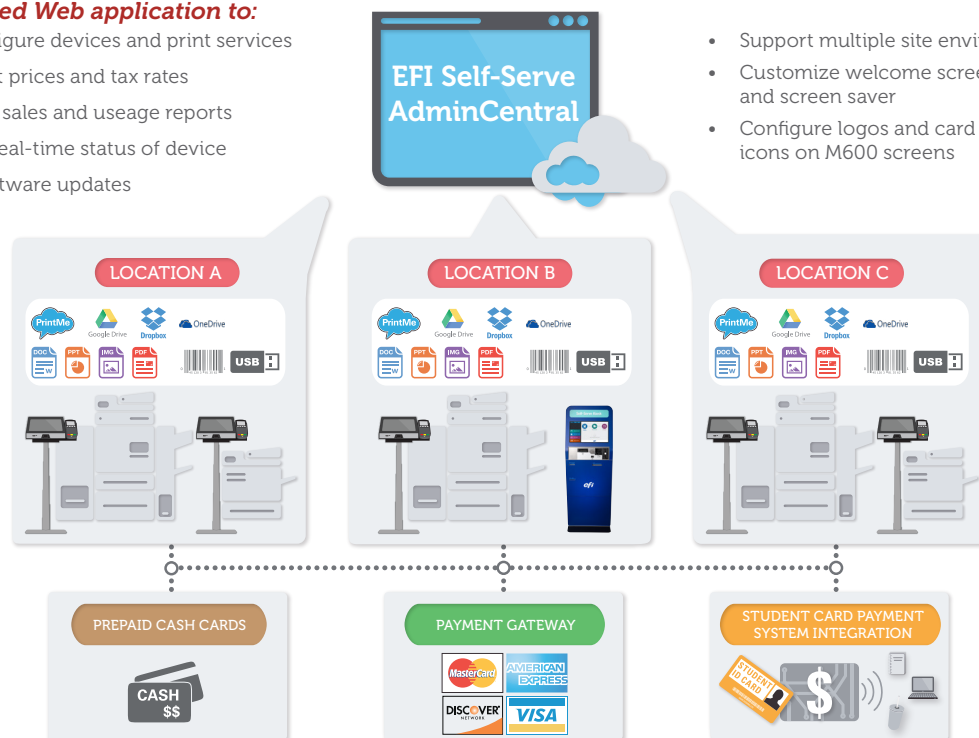
Monitor all your Self-Serve devices in real time using the AdminCentral dashboard. Securely check the status of all devices or get a revenue snapshot by device or location.

Select more detailed reports for a location, device, or transaction. Then print them as a PDF document on the fly or export to a CSV or XML file.

# Self-Serve AdminCentral

## Cloud-based Web application to:

- Add/configure devices and print services
- Set/adjust prices and tax rates
- Generate sales and usage reports
- Monitor real-time status of device
- Apply software updates



- Support multiple site environments
- Customize welcome screen and screen saver
- Configure logos and card icons on M600 screens

## Web browser support (Mac/Win)

- Chrome, Firefox, Safari (Mac only), Edge, Internet Explorer

## Payment gateway support

- FreedomPay

## Language

- English, Dutch, French, German, Italian, Spanish, Brazilian Portuguese

## Currency support

- USD, CAD, GBP

## Cash card system support

- Stored Value Solutions
- Givex

## Campus ID card system support

- CBORD CS Gold® and Odyssey PCS™
- Blackboard Transact™
- Heartland

## Customer support

You can access EFI technical support by phone, email, and our user forum, giving you the ability to remotely diagnose issues and implement software fixes to keep your self-serve copy and print service up and running.

# EFI fuels success.

We develop breakthrough technologies for the manufacturing of signage, packaging, textiles, ceramic tiles, and personalized documents, with a wide range of printers, inks, digital front ends, and a comprehensive business and production workflow suite that transforms and streamlines the entire production process, increasing your competitiveness and boosting productivity. Visit [www.efi.com](http://www.efi.com) or call 650-357-3500 for more information.



Nothing herein should be construed as a warranty in addition to the express warranty statement provided with EFI products and services.

The APPS logo, AutoCal, Auto-Count, Balance, BESTColor, BioVu, BioWare, ColorPASS, Colorproof, ColorWise, Command WorkStation, CopyNet, Cretachrom, Cretaprint, the Cretaprint logo, Cretaprinter, Cretaroller, Digital StoreFront, DocBuilder Pro, DockNet, DocStream, DSDesign Studio, Dynamic Wedge, EDOX, EFI, the EFI logo, Electronics For Imaging, Entrac, EPCount, EPPhoto, ERegister, EPStatus, Estimate, ExpressPay, FabriVu, Fast-4, Fiery, the Fiery logo, Fiery Driven, the Fiery Driven logo, Fiery JobFlow, Fiery JobMaster, Fiery Link, Fiery Navigator, Fiery Prints, the Fiery Prints logo, Fiery Spark, FreeForm, Hagen, Inkintensity, Inkware, LapNet, Logic, Metrix, MicroPress, MiniNet, Monarch, OneFlow, Pace, Pegasus, Pegasus Vision, PhotoXposure, PressVu, Printcafe, PrinterSite, PrintFlow, PrintMe, the PrintMe logo, PrintSmith, PrintSmith Site, PrintStream, Print to Win, Prograph, PSI, PSI Flexo, Radius, Remoteproof, RIPChips, RIP-While-Print, Screenproof, SendMe, Sincolor, Splash, Spot-On, TrackNet, UltraPress, UltraTex, UltraVu, UV Series 50, VisualCal, VUTEk, the VUTEk logo, and WebTools are trademarks of Electronics For Imaging, Inc. and/or its wholly owned subsidiaries in the U.S. and/or certain other countries.

All other terms and product names may be trademarks or registered trademarks of their respective owners, and are hereby acknowledged.