

Connect to Compatible Devices with the uniFLOW Online Remote Access Client



Rising labor costs and a demand for fast and efficient service are key drivers for remote support. To address this need, uniFLOW Online now offers a direct remote connection to compatible imageRUNNER ADVANCE devices from virtually anywhere with an internet connection. With this functionality, service providers can now assist users in real time, review settings, and check interface configurations.¹ This remote connection can also support compatible Zero Trust Environments.¹

Advantages of Remote Device Support for uniFLOW Online



Encrypted Remote Access

Up to two connections per tenant via an encrypted connection (SSH Tunnel).



Help Reduce IT Involvement

Little need for on-site staff to assist. Plus, VPN is not required.

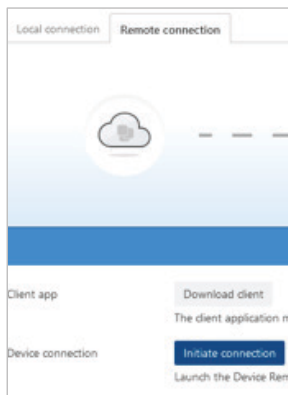


Compatible With Zero Trust Environments

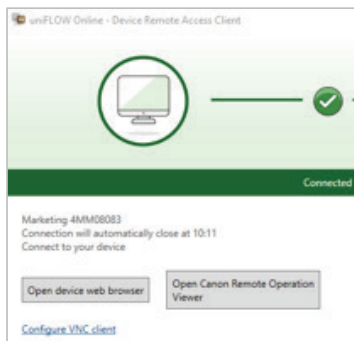
uniFLOW Online's Device Remote Access Client can access devices in compatible Zero Trust Networks.¹

Access the Remote User Interface to Apply Changes, Review Device Settings, and Restart the Device

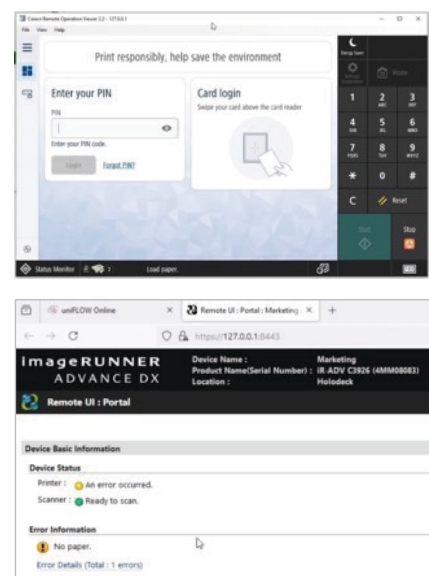
Initiate The Connection



Open the Device Access Client



Access The Device Interfaces



¹ Available on imageRUNNER ADVANCE Gen3 or higher. Access requires an internet connection, and each device requires an active Cloud Print and Scan Type 1 license subscription. Allows up to two connections per tenant. Remote Access will automatically disconnect after 20 minutes or manually terminate the connection.

Canon is a registered trademark of Canon Inc. in the United States and may also be a registered trademark or trademarks in other countries. uniFLOW is a registered trademark of NT-ware Systemprogrammierung GmbH. All other referenced product names and marks are trademarks of their respective owners. Subscription to a third-party cloud service required. Subject to third-party cloud service provider's Terms and Conditions. Canon products offer certain security features, yet many variables can impact the security of your devices and data. Canon does not warrant that use of its features will prevent security issues. Nothing herein should be construed as legal or regulatory advice concerning applicable laws; customers must have their own qualified counsel determine the feasibility of a solution as it relates to regulatory and statutory compliance. Specifications and availability subject to change without notice. Not responsible for typographical errors.

©2024 Canon U.S.A., Inc. All rights reserved.
12/24-1957-11990



usa.canon.com/uniflowonline

