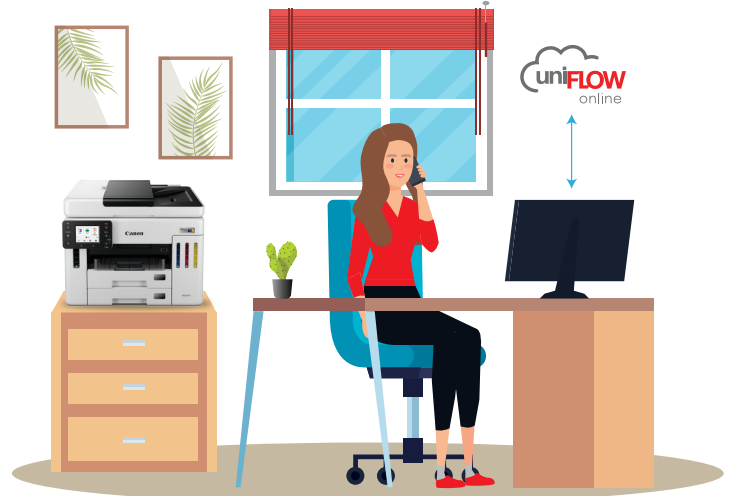


Maximize your MegaTank and MAXIFY GX with uniFLOW Online

Adding uniFLOW Online Cloud Link Print Connection to your uniFLOW Online subscriptions¹ allows workers to seamlessly print and scan² documents from their small office or home office using their Canon MegaTank GX7120X and MAXIFY GX5520X inkjet printers.

Organizations and administrators can benefit from detailed reporting³ and identify potential cost savings with comprehensive tracking and management. They can also release their print jobs using uniFLOW Online's access control features,⁴ which can now extend to those MegaTank and MAXIFY GX printers.¹



BENEFITS

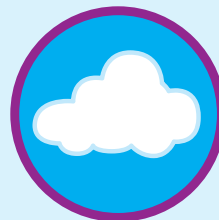
- A flexible print/scan² infrastructure built for the future of “Hybrid Work Print.”
- Remote workers can print and scan² from home while using security levels set by their organization.
- Remote workers can manage their print job status from home.
- Organizations can centralize print usage and related costs for compatible in-office MFPs, and at-home MegaTank and MAXIFY GX inkjet printers.



PRINTING



TRACKING/REPORTING



CLOUD



SCANNING²

¹ Cloud Link Print Connection is a user-based license that is compatible with Canon MAXIFY GX7020X, MAXIFY GX5520X, and MegaTank GX7120X inkjet printers. The subscription of at least one uniFLOW Online Cloud Print & Scan or Image Processing License is required.

² Scan feature is only applicable to the GX7120X model.

³ Reporting requires the use/selection of the uniFLOW Online Cloud Link Print Connection print driver.

⁴ Canon offers products that contain certain security features, yet many variables can impact the security of your devices and data. Canon does not warrant that use of features will prevent security issues. Nothing herein should be construed as legal or regulatory advice concerning applicable laws; customers must have their own qualified counsel determine the feasibility of a solution as it relates to regulatory and statutory compliance. Some security features may impact functionality/performance; you may want to test these settings in your environment.