



Connect to Compatible Devices with the uniFLOW Online Remote Access Client

Rising labor costs and a demand for fast and efficient service are key drivers for remote support. To address this need, uniFLOW Online now offers a direct remote connection to compatible imageRUNNER ADVANCE devices from virtually anywhere with an internet connection. With this functionality, service providers can assist users in real time, review settings, and check interface configurations.¹ This remote connection can also support compatible Zero Trust Environments.¹

Advantages of Remote Device Support for uniFLOW Online



Encrypted Remote Access

Up to two connections per tenant via an encrypted connection (SSH Tunnel).



Help Reduce IT Involvement

Little need for on-site staff to assist. Plus, VPN is not required.

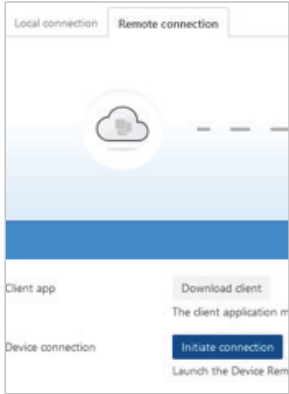


Compatible With Zero Trust Environments

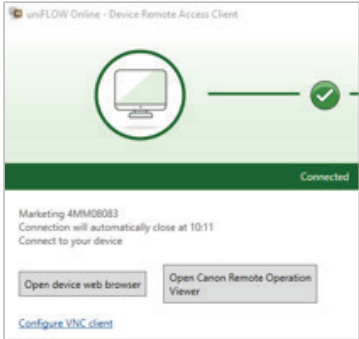
uniFLOW Online's Device Remote Access Client can access devices in compatible Zero Trust Networks.¹

Access the Remote User Interface to Apply Changes, Review Device Settings, and Restart the Device

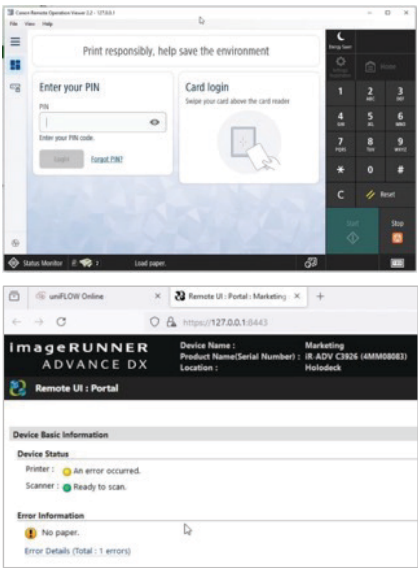
Initiate The Connection



Open the Device Access Client



Access The Device Interfaces



¹ Available on imageRUNNER ADVANCE Gen3 or higher. Access requires an internet connection, and each device requires an active Cloud Print and Scan Type 1 license subscription. Allows up to two connections per tenant. Remote Access will automatically disconnect after 20 minutes or manually terminate the connection.



usa.canon.com/uniflowone