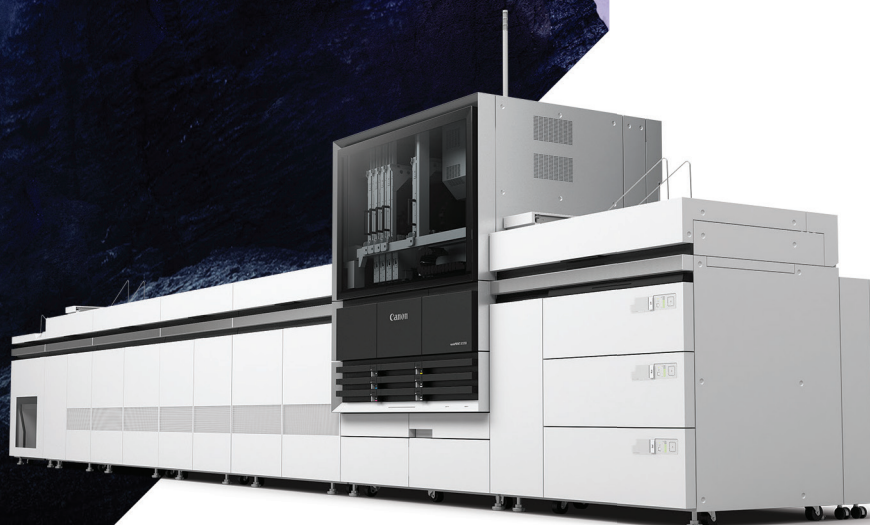


Canon

varioPRINT iX1700

Sheetfed Inkjet
Production Press



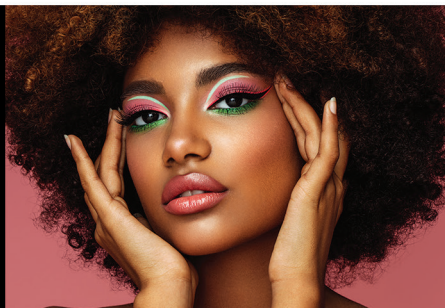
Level Up Your Press



QUALITY

2400 x 1200 dpi

High-Definition Printhead



SPEED

Up to 165/73 ipm

Letter/B3 Size



SHEET SIZE

Up to 14.33" x 26"

From Any Tray



MEDIA SUPPORT

Up to 24pt

Coated/Uncoated



SUSTAINABILITY EFFORTS

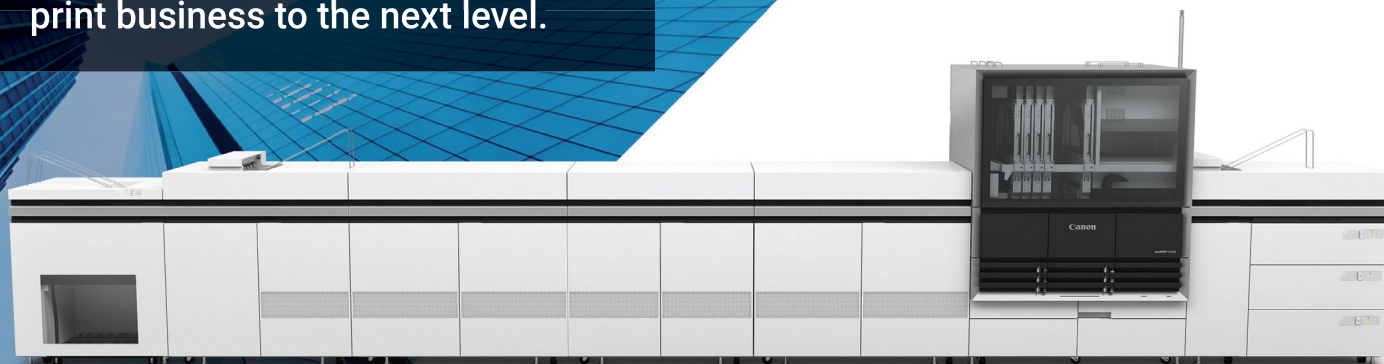
No Ozone

Operating Emissions



Work smart. Print fast. Reach beyond.

Powered by innovative Qualinx technologies that can take your print business to the next level.



A proven leader in inkjet innovation.

For more than a decade, Canon has been at the forefront in the evolution of inkjet print, revolutionizing the production print business. Our experience and expertise have made us a global leader in this rapidly growing market.

The varioPRINT iX1700 provides exceptional image quality, versatile media support, and efficient operation. Take advantage of inkjet productivity and performance to help create more opportunities for your print business.



High Efficiency and Productivity

Help minimize reprints with nozzle clog detection and automatic head cleaning

Strengthen system uptime with operator maintenance

Efficient press operations with PRISMAsync tools



Stunning Image Quality

Durable, high-definition Canon-developed printheads

Tight registration and repeatability with built-in monitoring

High density, wide-gamut, Canon-developed aqueous ink



Impressive Versatility

ColorGrip helps enable support of a wide range of medias

Advanced drying and fixation for robust output

Sustainability-focused, with recyclable deinkability in mind

Stunning color. Countless applications.

Canon inkjet sheetfed printing produces images that can rival offset printing on a diverse range of paper weights and surface types.



Print that packs a punch.

Print robust, repeatable color with razor-sharp detail and smooth gradients—with less operator intervention.

Amazing Print Quality

The varioPRINT iX1700 leverages cutting-edge Canon printing technology to produce high-quality, durable printing, both consistently and accurately.

Durable High-Definition Printhead technology can help achieve amazing print quality, with **Face Guard** nozzle protection and added printhead durability.

High Density, Aqueous Ink combined with **ColorGrip Conditioning Liquid** is designed to extend the range of applications and achieve rich, vibrant color on a wide variety of substrates. Whether printing on coated, uncoated, textured, or structured, the varioPRINT iX1700 can handle a wide range of jobs to help expand your print offering.

Innovative Drying and Fixing System controls paper moisture to suppress curling and ruffling, helping to provide high durability with great abrasion resistance.

Automatic Registration Correction Unit can help achieve high registration accuracy, providing crucial print positioning for duplex jobs, and helps to enrich overall image quality.



Catalogs



Pamphlets & Flyers



Magazines



Direct Mail



Transactional Documents



Light Packaging



Brochures



Postcards



Books

Expand your range of high-quality print applications.

Unleash your print capabilities—from high-quality brochures and catalogs, to books and magazines, to premium direct mail—printed on a vast selection of coated, uncoated, textured, or structured stock.

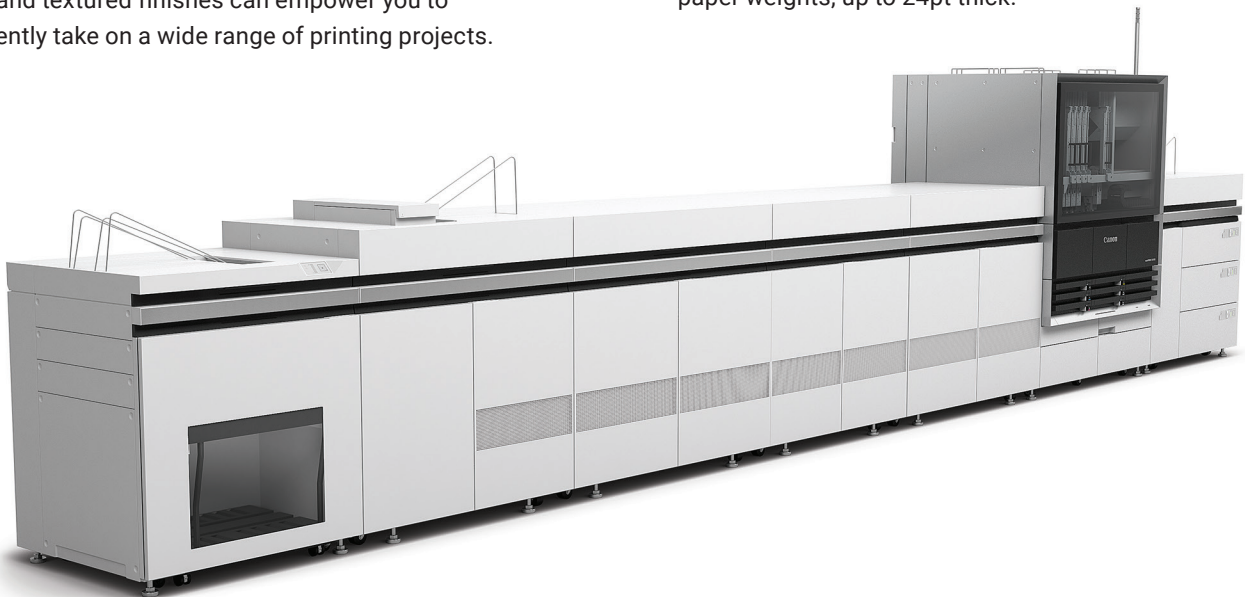
Support for A Wide Range of Media

Commercial printing requires producing the right application at the right level of quality. The varioPRINT iX1700 inkjet press offers the ability to print on a mix of stock weights and finishes all in one run, with quality that can hit the mark.

Support for thin and thick paper on a range of matte, gloss, and textured finishes can empower you to confidently take on a wide range of printing projects.

Large Sheet Size supports up to 14.33" x 26" size media, expanding the possibilities for larger-sized applications, or more up on the sheet to help complete jobs sooner.

Distinctive Straight Paper Path is designed to help with press reliability and allows support for a wide range of paper weights, up to 24pt thick.



Put our technology to work for you.

Qualinx technologies include Canon printheads and ink, media handling, and drying and fixation, which allows for high-speed printing with outstanding color and razor-sharp detail.

Press Indicator Lights

Intuitive system of LED lights allows the operator to quickly see the status of ink, paper, and waste.

Operator Maintenance System

Operator maintenance and available remote service systems provide support for quick response.

Stacking Module

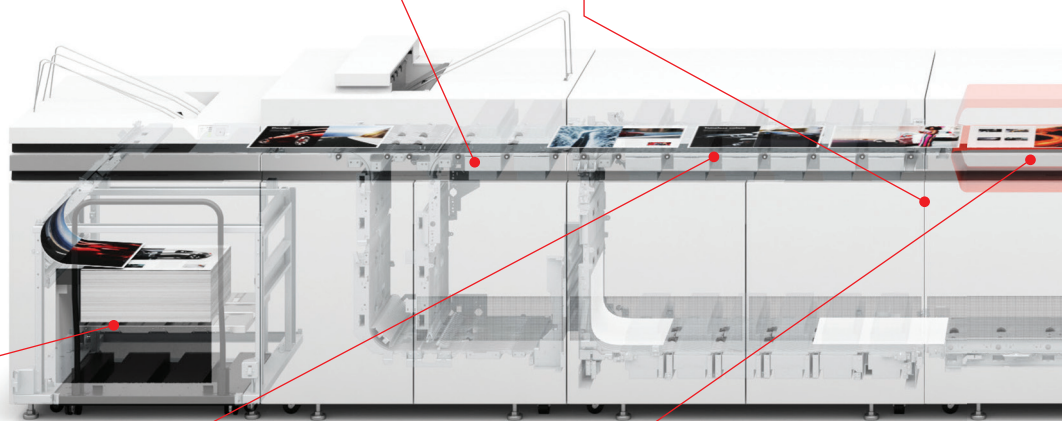
The large-capacity paper deck helps achieve high-operational production. A built-in dolly allows for easy roll-away of finished prints.

Cooling Module

Paper temperature is quickly brought down through a cooling module, allowing for easier paper handling and stacking.

Qualinx Fixing Technology Fixing Module

Heated belt applies pressure to the paper, fixing the ink polymers to form a thin, durable layer with reduced light scattering.





PRISMAsync Print Server

Consolidate control of your production workload into a single hub, monitoring and controlling all jobs from a single, intuitive interface.

Qualinx Print Innovation

High-Definition Printhead

Exclusive Canon technology delivers a resolution of 2400 x 1200 dpi with outstanding detail.

Qualinx Print Innovation

Ink Circulation System

Printheads are equipped with ink circulation that helps keep ink flowing for high image quality and stable operation.

Qualinx Ink Innovation

High Density Aqueous Ink

Water-based inks with a proprietary formulation produces vivid color.

Qualinx Ink Innovation

ColorGrip Conditioning Liquid

ColorGrip selectively pre-treats the media surface, so that ink droplets remain crisp for sharp text and vibrant output.

Attention Light

The LED attention light displays the press status throughout the duration of the run.

Qualinx Print Innovation

Ink Clogging Detection

An onboard sensor automatically detects clogged nozzles and corrects itself during a print run.

Qualinx Media Handling

Sheet Control

Onboard multi-sheet detection with a dedicated purge tray helps to minimize interruption of print runs.

Paper Input Module

Standard 5,100-sheet capacity allows for all supported medias in any tray.¹

Qualinx Drying Technology

Drying Module

Hot air is applied to the sheet to evaporate water content of the ink and helps to limit paper distortion.

Straight Paper Path

A distinctive straight path is designed to reduce paper stress, enabling support for a wide range of media, from 50 to 450 gsm thick.²

Qualinx Print Innovation

Registration Correction Unit

A multi-point registration system helps center, time, and position the sheet correctly for imaging, helping to achieve front-to-back accuracy of up to +/- 0.5 mm.

¹ Optional PIM and stacker configurations are available for additional capacity.

² 50-65 gsm weights supported on uncoated media only.

Built to perform. Built to deliver.

Canon core technologies combined with innovative inkjet features are designed with reliability in mind, helping to keep the press up and running.

Increased output drives opportunity.

The varioPRINT iX1700 delivers reliability, productivity, and high system uptime that today's printers need for fast, dependable, and easy operation.

Keep the Press Running

The varioPRINT iX1700 provides print speeds of up to 165 ipm on letter-sized sheets, and 73 ipm on B3-sized sheets. Combined with Qualinx print innovations, the press can achieve high productivity, throughput, and system uptime across demanding print runs.

Automatic Head Maintenance thoroughly cleans the print nozzles at intervals that will not interrupt the press, maintaining printhead health and high image quality—helping to provide consistency and reduce unexpected downtime.

Automatic Uniformity Correction system measures ink density with an inline scanner and automatically adjusts the printhead accordingly, achieving high image quality and stability.

Automatic Ink Clogging Detection identifies if a nozzle becomes clogged and automatically compensates for any blocked paths, helping to maintain quality and reduce spoilage.

Paper Conditioning provides additional paper stability and helps to limit unwanted paper curling or deformity due to fluctuating temperature and moisture levels in the press room.

A Straight Paper Path leverages proven Canon sheetfed technology to help provide reliable transport of a wide range of thin or thick media.

Paper Input Module (PIM) offers an expanded 5,100-sheet capacity,³ and includes dual vacuum feeding with air separation that allows for stable paper feeding, even with larger, longer paper sizes up to 26 inches in length.

Multi-Sheet Detection sensors are built in to support each paper drawer. They automatically remove and discharge any mis-fed paper before continuing the print run, reducing the operator's time and effort.



³ 5,100-sheet capacity based on 17-20 lb bond.

Designed to support continuous operation.

Running high volume jobs requires a press that can handle the workload. The varioPRINT iX1700 is built for busy, mid-large size printers and in-plant press operations.

A Production Workhorse

The varioPRINT iX1700 is built to withstand the demands of print shops with print volumes in mid to heavy production runs.

High-Rigidity Frame: A strong, welded steel, rigid press frame provides added stability and suppresses vibration during transport and daily operation, supporting press longevity.

Reinforced Drive Components: A durable belt drive helps provide strength and stable performance, even when used for extended periods of time.

Long-Lasting Moving Parts: Manufactured with highly durable fibers that provide high-bending resistance and added strength necessary for continuous high-speed printing.

Built with Operators in Mind

The functional design of the varioPRINT iX1700 adds to its productivity—designed to save valuable operator time and labor.

Attention Light and LED Status Indicators, placed along the front of the unit, allow operators to easily and intuitively identify press status, including ink and paper supply, discharge, and misfeed locations, without having to check the UI screen.

Transparent Engine Door allows operators to visually check the printing status of a job at any point during a run, and provides an easy way to see if the press is running properly, even at a distance.

Front Accessible Module Doors allow for easy operation and maintenance. The flat top design provides an additional surface for supplies, consumables, and output, which can increase productivity during a run.



More printing. Less effort.

Robust, reliable, and highly automated, the varioPRINT iX1700 can produce high volume output and consistent quality, with modest maintenance.

Do more with a press that needs you less.

The varioPRINT iX1700 includes powerful automation technology that, when combined with the PRISMA suite of workflow solutions, can minimize press operator time on tasks that consume valuable production labor.

Manage Print Workflows Seamlessly

Canon's comprehensive workflow software helps streamline and automate print operations with easy-to-use, professional color and media management.

PRISMAsync Print Server can consolidate control of your production workload into a single hub. Easily monitor and control simple or complex jobs from a single, intuitive interface.

PRISMAsync Remote Manager lets you monitor multiple presses, edit job properties, manipulate color curves, manage queues, and submit and reroute print jobs—from any web browser or PC.⁴

PRISMAlytics Dashboard⁵ puts recorded press data at your fingertips. This helps reduce turnaround time, waste, and costs by giving you access to detailed information on your usage, production, and consumption.

Help Improve Uptime with Proactive Service

Having the ability to monitor operation, the press helps allow for upfront optimization with scheduler tools and self-service functions.

Available Service Programs offer multiple levels of operator-trained maintenance, in addition to remote service support for quick response. Operators can conduct maintenance by utilizing smart service and built-in engine functionalities.

Removable Parts, including the lightweight printhead, allow operators to quickly and easily maintain the press without the help of a service technician.

Continuous Run Printing lets operators easily replace the ink pack and media, remove waste ink and cleaning solution, and more, without interrupting the print run.



⁴ Web access must be within local network connectivity.

⁵ Requires an account in PRISMA Home, optional service with separate fees, terms, and conditions.

Shape the future with Canon.

Unlock the possibilities with Canon sheetfed inkjet presses. Discover the ways Canon can offer amazing industry expertise and support, enabling cutting-edge production solutions that can help grow your business.

Grow Your Print Business

As a global market leader in sheetfed inkjet presses, Canon's success, experience, and insight into production printing has resulted in a diverse lineup of technologies that can help your business thrive. Commercial printers can partner with confidence to help expand their business into new and exciting markets.

With 80-plus years of expertise in designing and developing innovative imaging technology, Canon is continually developing adaptive solutions to help your business on its path to success.

As a true business partner, we can help you inspire your customers, improve your productivity, and enrich your operation's offerings. Canon's vision, realized through innovative technological advances, can help put your business on the path to a brighter future.

Level Up Your Press

Caring for our environment.

From hardware, to ink, to daily production, the varioPRINT IX1700 has been developed with sustainability in mind.

- No ozone emissions
- Conscientious energy consumption
- Recycleable deinkability

varioPRINT iX1700

Key Specifications

Print Speed	Letter	Up to 165 ipm
	B3	Up to 73 ipm
Print Resolution		2400 x 1200 dpi
Paper Capacity	Standard	Up to 5,100 Sheets
	Maximum ⁶	Up to 15,300 Sheets
Paper Size	Standard	8" x 8" to 14.33" x 26"
Paper Weight	Uncoated	14 lb. Bond to 170 lb. Cover
	Coated	17 lb. Bond to 170 lb. Cover
Print Server		PRISMAsync Print Server

⁶ Optional feeding units required.

Canon

usa.canon.com/production



Canon is a registered trademark of Canon Inc. in the United States and may also be a registered trademark or trademark in other countries. varioPRINT is a registered trademark of Canon Production Printing Netherlands B.V. All other referenced product names and marks are trademarks of their respective owners. Some printer output images may be simulated. Specifications and availability subject to change without notice. Not responsible for typographical errors.

varioPRINT iX1700 is currently under development and not available for sale or use. These devices have not been authorized as required by the rules of the Federal Communications Commission. varioPRINT iX1700 is not, and may not be offered for sale or lease, or sold or leased, until authorization is obtained.

©2025 Canon U.S.A., Inc. All rights reserved.
10/25-2462-13909



Learn more at
usa.canon.com/production